

GAME NOTES

2023 VOLLEYBALL • MATCH DAY #15 • NOVEMBER 6, 2023

Team Nuneviller vs. Team Hentz • 5 p.m. Arizona Time • ESPN+
Team Linnehan vs. Team Edmond • 7:30 p.m. Arizona Time • ESPN



AUProSports.com • Twitter: @auprosports • Instagram: @AUProVolleyball • Facebook: Athletes Unlimited

2023 LEADERBOARD

POS.	+/-	PLAYER	TOTAL
1	0	Leah Edmond	3,944
2	0	Alli Linnehan	3,650
3	1	Brooke Nuneviller	3,194
4	-1	Morgan Hentz	3,193
5	2	Natalia Valentin-Anderson	2,973
6	2	Bethania De La Cruz	2,927
7	-1	Sydney Hilley	2,877
8	1	Lindsey Vander Weide	2,869
9	-4	Molly McCage	2,847
10	0	Claire Chaussee	2,800
11	0	Génesis Collazo	2,715
12	0	Nootsara Tomkom	2,475
13	1	Jenna Rosenthal	2,384
14	-1	Willow Johnson	2,257
15	1	Saskia Hippe	2,164
16	-1	Nomaris Vélez Agosto	2,146
17	0	Tori Dixon	2,094
18	1	Yossiana Pressley	2,043
19	3	Kendall White	2,033
20	0	Aury Cruz	2,009
21	-3	Alisha Childress	1,952
22	-1	Danielle Hart	1,927
23	4	Kaz Brown	1,925
24	-1	Taylor Bruns Tegenrot	1,916
25	1	Amanda Benson	1,907
26	-2	Ali Bastianelli	1,877
27	-2	Emma Willis	1,800
28	0	Karis Watson	1,737
29	3	Lindsay Stalzer	1,552
30	1	Sassá Gonzaga	1,548
31	-2	Deja McClendon	1,507
32	1	Kayla Caffey	1,505
33	-3	Erin Fairs	1,473
34	0	Nia Reed	1,429
35	0	Ray Santos	1,421
36	1	Shelly Fanning	1,381
37	3	Nicole Edelman-Cagliari	1,303
38	0	Marin Grote	1,286
39	-3	Katie Lukes	1,263
40	-1	Symone Abbott	1,168
41	0	Gabby Blossom	1,045
42	0	Blake Mohler	1,021
43	0	Nia Parker-Robinson	862
44	0	Maria Schlegel	861
45	0	Anota Adekunle	236

ASPIRATION ACES

144

Aspiration is committed to planting 10 trees for every service ace recorded during the 2023 Athletes Unlimited Volleyball season. There were **213 aces** during the 2022 campaign.

Aspiration ACES

VOLLEYBALL ATHLETES UNLIMITED

YESTERDAY'S NEWS: Team Nuneviller and Team Edmond each secured wins on Sunday evening in the penultimate doubleheader of the 2023 Athletes Unlimited Volleyball season ... Outside hitter **Brooke Nuneviller** earned her first victory as a captain with Team Nuneviller's 75-63 triumph over Team Linnehan ... Meanwhile, Team Edmond ran its Week Five record to 2-0 after a 69-57 decision against Team Hentz.

⤿ Nuneviller and outside hitter **Bethania De La Cruz** combined to register 30 kills with 20 digs as Team Nuneviller evened its record to 1-1 ... Nuneviller earned her third MVP 1 award of the season after posting a double-double of 12 kills and 12 digs ... De La Cruz added a match-high 18 kills with eight digs to claim MVP 2 honors and 300 leaderboard points.

⤿ In the nightcap, setter **Natalia Valentin-Anderson** and outside hitter **Leah Edmond** each tallied a double-double to guide Team Edmond to its win over Team Hentz ... Valentin-Anderson dished out 40 assists with 12 digs, while Edmond had 11 kills and 10 digs while garnering her league-leading ninth Match MVP honor of the campaign.

RUBBER MATCH: Outside hitters **Leah Edmond** and **Alli Linnehan** will square off as opposing captains for the third time this season in the second match of Monday's doubleheader ... Edmond scored the first win in the series with a 69-63 verdict to close Week Two, while Linnehan countered with a 75-64 win last Sunday.

THREE'S COMPANY: Outside hitter **Bethania De La Cruz** begins Monday's season finale twinbill in sixth place on the leaderboard and has a chance to become the first player in the league's history to earn a medal in three consecutive seasons ... The 2022 Athletes Unlimited Volleyball champion also finished in second place during the inaugural 2021 campaign.

⤿ Lacrosse attacker **Sam Apuzzo** is the only player in any Athletes Unlimited sport to be a medalist in three seasons, finishing in third place during the 2021 season before claiming second place in each of the last two seasons.

WINNING WAYS: Outside hitter **Lindsey Vander Weide** and opposite **Génesis Collazo** have posted a league-best 11-3 record this season after Team Edmond's 69-57 victory over Team Hentz on Sunday night ... The duo has a chance to match the Athletes Unlimited Volleyball single-season mark for the most match wins by a player ... Middle blocker **Ronika Stone** set the standard with 12 victories last season.

⤿ Vander Weide has won 11 of her last 12 outings after starting the season with back-to-back losses, while Collazo is 8-1 over her last nine contests following a 3-2 start to the campaign.

GOLD RUSH: After beginning the season with two wins in the first two weeks of the season, the Gold jersey has fashioned a 6-2 record during the last three weeks following Team Edmond's 69-57 victory over Team Hentz on Sunday night ... The Gold jersey's eight wins share the league lead with the Blue jersey.

10 COUNT: Outside hitter **Leah Edmond** joined outside hitter **Bethania De La Cruz** as the only team captains in Athletes Unlimited Volleyball history to collect 10 wins in a season ... Edmond, who owns a 12-8 career record as a team leader, also became the fourth captain in any Athletes Unlimited sport to secure 10 wins during a single season ... In addition to De La Cruz, pitcher **Cat Osterman** was 10-2 in four weeks as a team captain during the 2020 softball season, while attacker **Sam Apuzzo** won 10-of-12 contests in the 2022 lacrosse season.

CAN YOU DIG IT?: Libero **Morgan Hentz** leads the league with 204 digs through 14 matches, marking the fourth time in league history a player has registered at least 200 digs in a single season ... Hentz, who set the league record with 229 digs last year, is the only player in the league with 10 or more digs in every match this season and begins the season-ending doubleheader with a streak of 25 straight matches with 10 or more digs.

A GOOD SIGN?: Outside hitter **Leah Edmond** became the third player in Athletes Unlimited Volleyball history to accumulate 2,000 stat points in a single season after collecting 115 stat points in Team Edmond's win over Team Hentz on Sunday night ... Edmond joins outside hitters **Bethania De La Cruz** and **Jordan Larson** in the exclusive club ... Larson set the league record with 2,169 stat points en route to winning the 2021 title before De La Cruz surpassed the mark with 2,352 stat points while winning last year's crown.

AWARDS SEASON: Seven players were named to the 2023 Athletes Unlimited Volleyball All-Position Team on Saturday after a vote of the league's players and facilitators ... The group will be recognized after Monday's season finale between Team Edmond and Team Linnehan.

- ⤿ **Setter:** Nootsara Tomkom
- ⤿ **Libero:** Morgan Hentz
- ⤿ **Outside Hitters:** Leah Edmond, Claire Chaussee
- ⤿ **Opposite:** Willow Johnson
- ⤿ **Middle Blockers:** Molly McCage and Tori Dixon

QUICK SETS: Libero **Morgan Hentz** established a new league single-season record with her 31st set victory in Sunday's loss to Team Edmond ... Middle blocker **Kaz Brown** equaled the single-season record with her 32nd and 33rd solo blocks of the season against Team Hentz ... Outside hitter **Leah Edmond** can become the fourth player in league history to post 10 or more kills in all 15 matches of a season if she gets double-digit kills against Team Linnehan on Monday ... Setter **Natalia Valentin-Anderson** collected her ninth career match with 40 or more assists on Sunday, the most by any player in league history.

TEAM EDMOND (2-0)

Captain Leah Edmond
2023 Record as Captain 10-4
Career Record as Captain 12-8
Facilitator Kayla Banwarth

Nov. 3 vs. Team Nuneviller W, 61-60
Nov. 5 vs. Team Hentz W, 69-57
Nov. 6 vs. Team Linnehan 7:30 p.m. AZT

TEAM LINNEHAN (1-1)

Captain Alli Linnehan
2023 Record as Captain 3-5
Career Record as Captain 3-5
Facilitator Brandon Directo

Nov. 3 vs. Team Hentz W, 81-72
Nov. 5 vs. Team Nuneviller L, 75-63
Nov. 6 vs. Team Edmond 7:30 p.m. AZT

TEAM HENTZ (0-2)

Captain Morgan Hentz
2023 Record as Captain 7-4
Career Record as Captain 7-4
Facilitator Stephen Gbur

Nov. 3 vs. Team Linnehan L, 81-72
Nov. 5 vs. Team Edmond L, 69-57
Nov. 6 vs. Team Nuneviller 5 p.m. AZT

TEAM NUNEVILLER (1-1)

Captain Brooke Nuneviller
2023 Record as Captain 1-1
Career Record as Captain 1-1
Facilitator Dave Rubio

Nov. 3 vs. Team Edmond L, 61-60
Nov. 5 vs. Team Linnehan W, 75-63
Nov. 6 vs. Team Hentz 5 p.m. AZT

RECORD BY JERSEY COLOR

Week	One	Two	Three	Four	Five
Gold	1-2	1-2	2-1	2-1	2-0
Orange	0-3	0-3	3-0	1-2	1-1
Blue	2-1	3-0	1-2	2-1	0-2
Purple	3-0	2-1	0-3	1-2	1-1

PREVIOUS AU CHAMPIONS

2020 Softball Cat Osterman
2021 Volleyball Jordan Larson
2021 Lacrosse Taylor Cummings
2021 Softball Aleshia Ocasio
2022 Basketball Tianna Hawkins
2022 Volleyball Bethania De La Cruz
2022 AUX Softball Danielle O'Toole
2022 Lacrosse Taylor Moreno
2022 Softball Dejah Mulipola
2023 Basketball NaLyssa Smith
2023 AUX Softball Rachel Garcia
2023 Lacrosse Taylor Moreno
2023 Softball Odicci Alexander

VOLLEYBALL MEDIA CENTER PAGE



WEEKLY SCHEDULE AND FAN INFORMATION

Date	Match	Time/Score	Broadcast	Ticket Promotion	Giveaway	Post-Match Activities
November 3	Team Hentz (Blue) vs. Team Linnehan (Orange)	Linnehan, 81-72	ESPN+	-	Topps Cards (250)	Autographs
	Team Edmond (Gold) vs. Team Nuneviller (Purple)	Edmond, 61-60	ESPN+	-	Topps Cards (250)	Autographs; Serve on the Court
November 5	Team Nuneviller (Purple) vs. Team Linnehan (Orange)	Nuneviller, 75-63	ESPN+	-	Phone Grip Holders (250)	Autographs
	Team Hentz (Blue) vs. Team Edmond (Gold)	Edmond, 69-57	ESPNU	-	Phone Grip Holders (250)	Autographs; Pepper on the Court
November 6	Team Nuneviller (Purple) vs. Team Hentz (Blue)	5 p.m. AZT	ESPN+	\$5 Kids Tickets	Replica Medals (250)	Autographs
	Team Linnehan (Orange) vs. Team Edmond (Gold)	7:30 p.m. AZT	ESPNU	\$5 Kids Tickets	Replica Medals (250)	Closing Ceremony

Designated home team listed second on schedule • All matches are played at Legacy Park (Mesa, Ariz.) • Dates, times and broadcast designations are subject to change

WHO WE ARE

Athletes Unlimited is a new model of professional sports where athletes are decision makers and individual players are champions of team sports. We literally change the game with faster play and fluid teams, delivering next-level competition and engagement in which every moment counts. Athletes Unlimited began in 2020 with Women's Softball and followed with Women's Volleyball (2021), Women's Lacrosse (2021), Women's Basketball (2022) and AUX Softball (2022). Athletes Unlimited is building the next generation of both athletes and fans.

Our athletes are in charge of their team and league decisions, and of their individual success. We reboot rosters and gameplay to create fast and exciting competition that speaks to contemporary sports fans, bringing them close to the action and the athletes in games where every moment counts. We incorporate the player-centric model that fans love about fantasy sports. We use digital media platforms and cutting-edge technology to connect fans deeply to athletes at the top of their game on and off the field, and to the game itself.

HOW THE TEAMS ARE SELECTED

A draft will be held prior to each week's matches with the top four players in the individual leaderboard serving as the team captains. The captains will then fill their rosters by selecting 10 other players. Each draft will be held on the Tuesday before the week's matches.

Uniform colors will be assigned based on the team captain's rank on the leaderboard. The top-scoring captain's team will wear gold, while the second-highest point scorer's team dons orange jerseys. The third-place team will wear blue jerseys and the fourth-place team will wear purple jerseys.

Each team will consist of 11 players, including five PINs (outside hitters and opposite hitters), two setters, three middle blockers and one libero.

RULES OF INTEREST

Match Duration: Each Athletes Unlimited volleyball match consists of three (3) sets regardless of whether a team wins two sets in the match. A set is won when a team scores 25 or more points while winning by a margin of two (2) points or more.

Golden Set: In the event the match score is tied after three (3) sets, a "Golden Set" will be played to determine the match winner. The "Golden Set" will be won by the team which scores five (5) points while winning by a two-point margin or when a team reaches 10 total points.

Substitutions: Teams are limited to a maximum of six (6) substitutions in each set. In the event any match requires a "Golden Set," teams will be permitted no more than two (2) substitutions for the additional set.

Timeouts: Each team is permitted a maximum of two (2) timeouts per set with each timeout lasting two minutes (2:00). In the event a "Golden Set" is necessary, each team will be given one (1) timeout for the additional set.

Media Timeouts: A media timeout of three minutes (3:00) will take place when a team scores 15 points in a set during regulation. There will not be a media timeout in a "Golden Set."

Time Between Sets: A timeout of five (5) minutes will take place between each set.

Captain's Challenges: A captain may initiate replay review of certain events subject to the provisions of the rule as set out below. Replay reviews triggered under this rule shall be referred to as a 'Captain's Challenge', or 'Challenge' for short.

Each team is entitled to two (2) challenges per set. In the event a "Golden Set" is played, each team will be granted one (1) challenge.

A team may use a Challenge to initiate replay review of the following events:

- 🌀 Whether a ball is in or out
- 🌀 Block touch
- 🌀 Service line fault
- 🌀 3-meter line fault
- 🌀 Center line fault
- 🌀 Net touch

Any called fault, violation, or other decision by the match officials not listed above, or any non-call, is not a challengeable event.

Officials' Reviews: Match officials may initiate a replay review of the same specific events as "Captain's Challenge" under the guidelines below. Replay reviews triggered under this rule shall be referred to as an "Officials' Review."

An Officials' Review can only occur during a set when one team has reached 20 points or during a "Golden Set." In addition, there are no limits on the number of "Officials' Reviews" and they can be called regardless of whether a team has any remaining "Captain's Challenges" in the set.

INDIVIDUAL LEADERBOARD

While traditional volleyball statistics are kept during each Athletes Unlimited match, players earn individual points by accumulating those statistics. Points accumulated by statistics, set and/or match wins and MVP selections are used to create an individual leaderboard, which determines captains for each week and the individual champion at the end of the season.

Points are awarded at the following increments during the match:

Service Ace	+12 Points
Block	+12 Points
Kill	+8 Points
Dig	+5 Points
Good Pass	+2 Points
Block Assist *	+2 Points
Assist	+1 Point
Service Error	-8 Points
Attack Error	-12 Points
Set Error	-12 Points
Pass Error	-12 Points

* - Middle blockers only

In the event a set requires more than 50 points to determine a winner, stat points will not be recorded for any stats after the 50-point mark in the set. In addition, if a match requires overtime or a "Golden Set," the stats accumulated during the "Golden Set" do not earn any individual points for the athletes on the leaderboard. There are also no additional team set win points for the "Golden Set."

In addition, athletes will be awarded 40 individual points if their team wins a single set. If the teams score the same number of points in a set, the points carry over to the next set.

Athletes on the winning team in each match will be awarded 60 individual points toward the individual leaderboard. The total score determines the overall match winner, which means a team may lose two sets, but win the overall match.

Example: The Gold Team loses the first two sets 25-23 and 25-23 to the Blue Team, but wins the last set, 25-17. The Gold Team wins the overall match points because they had the larger overall score, 71-67.

A total of three MVPs will be selected following each game by the athletes with the top player earning 60 points. The second MVP receives 40 points, while the third MVP claims 20 points.

MEDALS

The top four players on the final leaderboard in addition to the Defensive Player of the Year will receive a medal designed and fabricated for Athletes Unlimited by Lisa Issenberg, founder of Kiitellä, inc. The front face of the medal represents the identity of Athletes Unlimited, while the back face of the medal leans into the specific sport, the year, location and words about Athletes Unlimited's vision, mission and values on and off the field - Excellence in Community and Leadership.

ATHLETE COMPENSATION

Athletes are compensated in three ways during an Athletes Unlimited season, including base pay, win bonuses (set and match wins) and a leaderboard bonus. Athletes Unlimited also makes an additional donation equal to the athlete's win bonus to their selected cause partner.

POSTSEASON AWARDS

At the conclusion of the 2023 Athletes Unlimited Volleyball season, the following awards will be presented during the closing ceremony:

- 🌀 Medals to top four finishers on leaderboard
- 🌀 Defensive Player of the Year & Blocker of the Year
- 🌀 Teammate of the Year
- 🌀 Athletes Unlimited All-Position Team (top players at each position)

The All-Position Team will include one setter, one libero, one opposite, two middle blockers and two outside hitters.

THE BOOK OF UNLIMITED

The Book of Unlimited was designed, handmade and bound for Athletes Unlimited and serves as a record keeper of its leagues. The book, which was handmade by Tikhon Verygyn in his studio in Kyiv, Ukraine, weighs nearly 25 pounds, measures approximately 12" by 18" and contains nearly 500 pages. The champion, along with all who competed, are inscribed into the book. In addition, The Book of Unlimited also contains a history of achievements in Athletes Unlimited, including stories, highlights and events.

The book is opened during the Opening Ceremony for each season and is closed after the champion is named and her name is inscribed into the book. The tradition began during Athletes Unlimited Softball's inaugural season in 2020.

2023 ATHLETES UNLIMITED VOLLEYBALL ACTIVE ROSTER (NUMERICAL ORDER)

NO.	NAME	POS.	HT.	HOMETOWN	COLLEGE	PRONOUNS	PRONUNCIATION	INSTAGRAM	TWITTER
00	Amanda Benson	L	5-7	Litchfield Park, Ariz.	Oregon	She/Her		amandasbenson	abenson_10
1	Kendall White	L	5-7	Zionsville, Ind.	Penn State	She/Her		kbaby10	-
2	Brooke Nuneviller	OH	5-11	Chandler, Ariz.	Oregon	She/Her	none-uh-vill-uhr	brooke_nuneviller	brookeyy_5
3	Danielle Hart	MB	6-4	Virginia Beach, Va.	Wisconsin	She/Her		daniellehart	daniellehart
4	Ray Santos	S	5-10	Ponce, Puerto Rico	Arkansas	She/Her	rye sahn-tos	rsantos33	rsantos33
5	Molly McCage	MB	6-3	Spring, Texas	Texas	She/Her		mollymccage	mollymccage
6	Alisha Childress	S	6-0	Leland, Mich.	Penn State	She/Her	Uh-lee-shuh Chill-driss	aglass1_6	aglass6
7	Erin Fairs	OH	5-10	Houston, Texas	Louisville	She/Her		erinnfairs	erinfairs
8	Sydney Hilley	S	6-0	Brooklyn Park, Minn.	Wisconsin	She/Her		sydneyhilley	sydneyhilley
9	Sassa Gonzaga	OH	5-10	Barbacena, Brazil	-	She/Her	sah-suh gon-zah-guh	welissa10	-
10	Kaz Brown	MB	6-4	Waterloo, Iowa	Kentucky	She/Her		kazbrown	kazbrown11
11	Claire Chaussee	OH	6-0	Sun Prairie, Wis.	Louisville	She/Her	SHAW-say	clairechaussee	clairechaussee9
12	Leah Edmond	OH	6-2	Lexington, Ky.	Kentucky	She/Her		leahedmond13	leahedmond13
13	Nootsara Tomkom	S	5-7	Ban Pong, Thailand	Rattana Bundit Univ.	She/Her	noo-SAHR-uh tom-kom	nootsara13	-
14	Nicole Edelman-Cagliari	S	6-0	Boulder, Colo.	Colorado	She/Her	cag-lee-ARE-ee	nicoledelman	nicoledelman
15	Katie Lukes	OH	6-2	San Clemente, Calif.	San Diego	She/Her		katie_lukes	-
16	Jenna Rosenthal	MB	6-5	Fond du Lac, Wis.	Marquette	She/Her		jenna.rosenthal	-
17	Taylor Bruns Tegenrot	S	5-11	Normal, Ill.	South Carolina	She/Her	Taylor Bruns Tay-gen-root	tbruns27	-
18	Deja McClendon	OH	6-1	Louisville, Ky.	Penn State	She/Her	day-zhuh	dejabeja	deja_beja
20	Blake Mohler	MB	6-2	Ocean Springs, Miss.	Purdue	She/Her	moe-ler	blakemohler	blakeelizabeth1
21	Lindsey Vander Weide	OH	6-3	Turlock, Calif.	Oregon	She/Her	van-der-wide-uh	lindseyvdb	lindseyvdb
22	Yossiana Pressley	OH	6-0	Cypress, Texas	Baylor	She/Her	YAW-see-AW-nuh	yossiana22_	yossiana22
23	Tori Dixon	MB	6-3	Burnsville, Minn.	Minnesota	She/Her		toridixon06	toridixon06
24	Aury Cruz	OH	5-10	Levittown, Puerto Rico	Florida	She/Her	R-EE Crews	azcruz	azcruz
26	Maria Schlegel	OH	6-0	Asturias, Spain	Polytechnic Madrid's University	She/Her	schlay-gull	mschlegel16	-
27	Natalia Valentin-Anderson	S	5-6	Caguas, Puerto Rico	Florida International	She/Her	nuh-TAHL-ee-uh val-in-teen anderson	nvale09	-
28	Kayla Caffey	MB	6-0	Chicago, Ill.	Texas	She/Her		itskayalexis	-
29	Lindsay Stalzer	OH	6-1	Kewanee, Ill.	Bradley	She/Her		lindsaystalzer	linzeemarie
31	Gabby Blossom	S	5-9	St. Louis, Mo.	San Diego	She/Her		gblossom13	-
32	Nia Parker-Robinson	OH	6-2	Indianapolis, Ind.	North Carolina	She/Her	knee-uh	niarobinson_	-
33	Nia Reed	OPP	6-1	Fort Lee, N.J.	Penn State	She/Her	knee-uh	niabia7	niakareed
37	Alli Linnehan	OH	6-1	Floyds Knobs, Ind.	Kentucky	She/Her	alley lynn-uh-han	allistumler	astumler
40	Nomaris Vélez Agosto	L	5-4	Corozal, Puerto Rico	Inter American Univ.	She/Her	no-mahr-is vuh-lez ah-go-sto	nomarivelez23	-
42	Symone Abbott	OPP	6-1	Detroit, Mich.	Northwestern	She/Her		symoneabbs	symoney10
44	Willow Johnson	OPP	6-3	Paradise Valley, Ariz.	Oregon	She/Her		willowj4	johnson4willow
46	Morgan Hentz	L	5-9	Lakeside Park, Ky.	Stanford	She/Her		morganhentz	-
48	Karis Watson	MB	6-2	Rock Hill, S.C.	Clemson	She/Her	care-iss	karisw8	-
54	Emma Willis	MB	6-3	La Jolla, Calif.	Denver	She/Her		emmawillis7	-
55	Ali Bastianelli	MB	6-3	Marysville, Mich.	Illinois	She/Her	Ali Bas-tee-uh-nell-ee	alisonrose5	alisonrose_5
77	Genesis Collazo	OPP	6-1	Corozal, Puerto Rico	-	She/Her	hen-uh-sis coy-ah-zo	genesis.collazo7	-
81	Bethania De La Cruz	OH	6-2	Santo Domingo, Dominican Republic	-	She/Her	Buh-TAN-ya De La Cruz	thebigbeth	-
88	Marin Grote	MB	6-4	Burbank, Calif.	Washington	She/Her	MAIR-in groat	marin_grote	-
91	Saskia Hippe	OPP	6-1	Berlin, Germany	-	She/Her	sahs-kee-uh hip-ah	saskia_hippe	sassi_13
97	Shelly Fanning	MB	6-2	Cypress, Texas	Baylor	She/Her		shelleystafford	-

2023 ATHLETES UNLIMITED VOLLEYBALL INACTIVE ROSTER (NUMERICAL ORDER)

NO.	NAME	POS.	HT.	HOMETOWN	COLLEGE	PRONOUNS	PRONUNCIATION	INSTAGRAM	TWITTER
19	Anota Adekunle	MB	6-1	Humble, Texas	Rice	She/Her		anotaadekunle	anota_michelle

2023 ATHLETES UNLIMITED VOLLEYBALL ALPHABETICAL ROSTER

NO.	NAME	NO.	NAME	NO.	NAME	NO.	NAME
42	Symone Abbott	81	Bethania De La Cruz	44	Willow Johnson	26	Maria Schlegel
19	Anota Adekunle	23	Tori Dixon	37	Alli Linnehan	29	Lindsay Stalzer
55	Ali Bastianelli	14	Nicole Edelman Cagliari	15	Katie Lukes	13	Nootsara Tomkom
00	Amanda Benson	12	Leah Edmond	5	Molly McCage	27	Natalia Valentin-Anderson
31	Gabby Blossom	7	Erin Fairs	18	Deja McClendon	21	Lindsey Vander Weide
10	Kaz Brown	97	Shelly Fanning	20	Blake Mohler	40	Nomaris Vélez Agosto
17	Taylor Bruns Tegenrot	9	Sassa Gonzaga	2	Brooke Nuneviller	48	Karis Watson
28	Kayla Caffey	88	Marin Grote	32	Nia Parker-Robinson	1	Kendall White
11	Claire Chaussee	3	Danielle Hart	22	Yossiana Pressley	54	Emma Willis
6	Alisha Childress	46	Morgan Hentz	33	Nia Reed		
77	Genesis Collazo	8	Sydney Hilley	16	Jenna Rosenthal		
24	Aury Cruz	91	Saskia Hippe	4	Ray Santos		

ATHLETE CAUSES

The Athlete Causes program, powered by Give Lively, will provide funding to charities of the players' choosing equal to 100 percent of their season win bonus and players will have the opportunity to create their own fundraising pages to support the organizations of their choice.

NO.	ATHLETE	CAUSE
00	Amanda Benson	One Love Foundation
1	Kendall White	Operation Underground Railroad
2	Brooke Nuneviller	Pink Fund
3	Danielle Hart	Alzheimer's Association
4	Ray Santos	Global Village Project
5	Molly McCage	1% For The Planet
6	Alisha Childress	Childress Family Foundation
7	Erin Fairs	We Serve First
8	Sydney Hilley	Side Out Foundation
9	Welissa Gonzaga	National Domestic Violence Hotline
10	Kaz Brown	Lupus Foundation of America
11	Claire Chaussee	Lasley and Rhyan Prather Foundation
12	Leah Edmond	American Cancer Society
13	Nootsara Tomkom	The Virago Project
14	Nicole Edelman-Cagliari	Women's Sports Foundation
15	Katie Lukes	Morgan's Message
16	Jenna Rosenthal	Operation Underground Railroad
17	Taylor Bruns Tegenrot	American Foundation for Suicide Prevention
18	Deja McClendon	JOYcademy
19	Anota Adekunle	Ella Baker Center for Human Rights
20	Blake Mohler	Friends of Jaclyn
21	Lindsey Vander Weide	The Humane Society
22	Yossiana Pressley	CURE Childhood Cancer
23	Tori Dixon	OC Pom Rescue
24	Aury Cruz	Susan G Komen
26	Maria Schlegel	American Foundation for Suicide Prevention
27	Natalia Valentin-Anderson	Baby2Baby
28	Kayla Caffey	BUILD (Broader Urban Involvement & Leadership Development)
29	Lindsay Stalzer	1% For The Planet
31	Gabby Blossom	Michael J Fox Foundation
32	Nia Parker-Robinson	Eclectic Soul VOICES Corporation
33	Nia Reed	New Heights Youth Foundation
37	Alli Linnehan	Go Ministries
40	Nomaris Vélez Agosto	Morgan's Message
42	Symone Abbott	Morgan's Message
44	Willow Johnson	Phoenix Police Foundation
46	Morgan Hentz	New Perceptions
48	Karis Watson	Operation Underground Railroad
54	Emma Willis	The Citizens Foundation
55	Ali Bastianelli	The Rainbow Connection
77	Genesis Collazo	Players for Pits
81	Bethania De La Cruz	Starlings USA
88	Marin Grote	1% For The Planet
91	Saskia Hippe	The Virago Project
97	Shelly Fanning	Uplifting Athletes

2023 ATHLETES UNLIMITED VOLLEYBALL SCHEDULE AND RESULTS

Date	Match #	Match	Broadcast	Time/Score	MVP 1	MVP 2	MVP 3
October 6	1	Team Nootsara vs. Team Valentin-Anderson	ESPN+	Team Nootsara, 75-63	Claire Chaussee	Nootsara Tomkom	Nia Reed
October 6	2	Team De La Cruz vs. Team Edmond	ESPN+	Team Edmond, 77-73	Alli Linnehan	Bethania De La Cruz	Leah Edmond
October 8	3	Team Edmond vs. Team Valentin-Anderson	ESPN+	Team Edmond, 75-58	Leah Edmond	Sydney Hilley	Danielle Hart
October 8	4	Team Nootsara vs. Team De La Cruz	ESPNU	Team Nootsara, 70-69	Willow Johnson	Ali Bastianelli	Nootsara Tomkom
October 9	5	Team Edmond vs. Team Nootsara	ESPNU	Team Edmond, 75-44	Morgan Hentz	Leah Edmond	Sydney Hilley
October 9	6	Team Valentin-Anderson vs. Team De La Cruz	ESPNU	Team De La Cruz, 74-72 (GS)	Bethania De La Cruz	Kaz Brown	Kayla Caffey
October 13	7	Team Hentz vs. Team Linnehan	ESPN+	Team Hentz, 76-51	Bethania De La Cruz	Morgan Hentz	Taylor Bruns Tegenrot
October 13	8	Team Edmond vs. Team Hilley	ESPN+	Team Hilley, 74-62	Claire Chaussee	Yossiana Pressley	Sydney Hilley
October 15	9	Team Hilley vs. Team Linnehan	ESPN+	Team Hilley, 75-53	Claire Chaussee	Sydney Hilley	Kayla Caffey
October 15	10	Team Hentz vs. Team Edmond	ESPN+	Team Hentz, 73-64	Brooke Nuneviller	Morgan Hentz	Bethania De La Cruz
October 16	11	Team Hilley vs. Team Hentz	ESPN+	Team Hentz, 78-55	Saskia Hippe	Bethania De La Cruz	Morgan Hentz
October 16	12	Team Linnehan vs. Team Edmond	ESPNU	Team Edmond, 69-63	Molly McCage	Deja McClendon	Leah Edmond
October 20	13	Team Hilley vs. Team Hentz	ESPN+	Team Hentz, 75-55	Nootsara Tomkom	Lindsey Vander Weide	Molly McCage
October 20	14	Team Edmond vs. Team Rosenthal	ESPN+	Team Edmond, 71-68	Tori Dixon	Saskia Hippe	Claire Chaussee
October 22	15	Team Rosenthal vs. Team Hentz	ESPNU	Team Hentz, 73-60	Molly McCage	Alli Linnehan	Morgan Hentz
October 22	16	Team Hilley vs. Team Edmond	ESPNU	Team Edmond, 72-60	Leah Edmond	Tori Dixon	Natalia Valentin-Anderson
October 23	17	Team Rosenthal vs. Team Hilley	ESPN+	Team Hilley, 72-59	Willow Johnson	Karis Watson	Sydney Hilley
October 23	18	Team Hentz vs. Team Edmond	ESPNU	Team Hentz, 75-47	Molly McCage	Alli Linnehan	Nootsara Tomkom
October 27	19	Team Linnehan vs. Team Hentz	ESPN+	Team Linnehan, 71-68	Alli Linnehan	Willow Johnson	Molly McCage
October 27	20	Team Edmond vs. Team Hilley	ESPN+	Team Edmond, 73-71	Claire Chaussee	Leah Edmond	Lindsey Vander Weide
October 29	21	Team Hilley vs. Team Hentz	ESPN+	Team Hentz, 79-68	Brooke Nuneviller	Bethania De La Cruz	Alisha Childress
October 29	22	Team Linnehan vs. Team Edmond	ESPNU	Team Linnehan, 75-64	Willow Johnson	Nootsara Tomkom	Alli Linnehan
October 30	23	Team Hilley vs. Team Linnehan	ESPN+	Team Hilley, 71-66	Yossiana Pressley	Alli Linnehan	Nicole Edelman-Cagliari
October 30	24	Team Hentz vs. Team Edmond	ESPNU	Team Edmond, 70-63	Leah Edmond	Kaz Brown	Natalia Valentin-Anderson
November 3	25	Team Hentz vs. Team Linnehan	ESPN+	Team Linnehan, 81-72	Alli Linnehan	Molly McCage	Willow Johnson
November 3	26	Team Edmond vs. Team Nuneviller	ESPN+	Team Edmond, 61-60	Natalia Valentin-Anderson	Leah Edmond	Lindsey Vander Weide
November 5	27	Team Nuneviller vs. Team Linnehan	ESPN+	Team Nuneviller, 75-63	Brooke Nuneviller	Bethania De La Cruz	Molly McCage
November 5	28	Team Hentz vs. Team Edmond	ESPNU	Team Edmond, 69-57	Natalia Valentin-Anderson	Kaz Brown	Leah Edmond
November 6	29	Team Nuneviller vs. Team Hentz	ESPN+	7 p.m. ET			
November 6	30	Team Linnehan vs. Team Edmond	ESPNU	9:30 p.m. ET			

2023 ATHLETES UNLIMITED VOLLEYBALL LEADERBOARD

RANK	CHANGE	NAME	TOTAL POINTS	WIN POINTS	STAT POINTS	MVP POINTS
1	0	Leah Edmond	3,944	1,560	2,024	360
2	0	Alli Linnehan	3,650	1,580	1,750	320
3	1	Brooke Nuneviller	3,194	1,200	1,814	180
4	-1	Morgan Hentz	3,193	1,840	1,173	180
5	2	Natalia Valentin-Anderson	2,973	1,420	1,393	160
6	2	Bethania De La Cruz	2,927	1,280	1,347	300
7	-1	Sydney Hilley	2,877	1,360	1,377	140
8	1	Lindsey Vander Weide	2,869	1,780	1,009	80
9	-4	Molly McCage	2,847	1,540	1,027	280
10	0	Claire Chaussee	2,800	980	1,560	260
11	0	Génesis Collazo	2,715	1,780	935	0
12	0	Nootsara Tomkom	2,475	1,360	935	180
13	1	Jenna Rosenthal	2,384	1,480	904	0
14	-1	Willow Johnson	2,257	980	1,037	240
15	1	Saskia Hippe	2,164	1,300	764	100
16	-1	Nomaris Vélez Agosto	2,146	1,100	1,046	0
17	0	Tori Dixon	2,094	1,120	874	100
18	1	Yossiana Pressley	2,043	1,000	943	100
19	3	Kendall White	2,033	1,060	973	0
20	0	Aury Cruz	2,009	1,080	929	0
21	-3	Alisha Childress	1,952	1,000	932	20
22	-1	Danielle Hart	1,927	1,460	447	20
23	4	Kaz Brown	1,925	960	845	120
24	-1	Taylor Bruns Tegenrot	1,916	1,480	416	20
25	1	Amanda Benson	1,907	1,040	867	0
26	-2	Ali Bastianelli	1,877	1,180	657	40
27	-2	Emma Willis	1,800	1,440	360	0
28	0	Karis Watson	1,737	1,540	157	40
29	3	Lindsay Stalzer	1,552	1,420	132	0
30	1	Sassá Gonzaga	1,548	1,320	228	0
31	-2	Deja McClendon	1,507	1,260	207	40
32	1	Kayla Caffey	1,505	1,020	445	40
33	-3	Erin Fairs	1,473	1,080	393	0
34	0	Nia Reed	1,429	1,180	229	20
35	0	Ray Santos	1,421	1,420	1	0
36	1	Shelly Fanning	1,381	1,060	321	0
37	3	Nicole Edelman-Cagliari	1,303	1,080	203	20
38	0	Marin Grote	1,286	1,220	66	0
39	-3	Katie Lukes	1,263	1,020	243	0
40	-1	Symone Abbott	1,168	1,120	48	0
41	0	Gabby Blossom	1,045	960	85	0
42	0	Blake Mohler	1,021	960	61	0
43	0	Nia Parker-Robinson	862	860	2	0
44	0	Maria Schlegel	861	760	101	0
45	0	Anota Adekunle	236	220	16	0

2023 ATHLETES UNLIMITED VOLLEYBALL LEADERBOARD POINTS BY WEEK

NAME	WEEK ONE	WEEK TWO	WEEK THREE	WEEK FOUR	WEEK FIVE	TOTAL POINTS
Abbott, Symone	220	36	508	280	124	1,168
Adekunle, Anotá	236	0	0	0	0	236
Bastianelli, Ali	475	80	773	418	131	1,877
Benson, Amanda	248	495	494	367	303	1,907
Blossom, Gabby	225	212	180	295	133	1,045
Brown, Kaz	279	215	395	599	437	1,925
Bruns Tegenrot, Taylor	492	260	545	375	244	1,916
Caffey, Kayla	407	449	209	192	248	1,505
Chaussee, Claire	578	819	420	640	343	2,800
Childress, Alisha	485	452	359	476	180	1,952
Collazo, Génesis	745	316	743	482	429	2,715
Cruz, Aury	439	634	416	243	277	2,009
De La Cruz, Bethania	729	1,145	120	547	386	2,927
Dixon, Tori	242	539	572	423	318	2,094
Edelman-Cagliari, Nicole	317	320	140	284	242	1,303
Edmond, Leah	1,028	709	877	792	538	3,944
Fairs, Erin	223	215	280	592	163	1,473
Fanning, Shelly	90	412	146	391	342	1,381
Gonzaga, Sassá	309	334	355	270	280	1,548
Grote, Marin	286	220	280	310	190	1,286
Hart, Danielle	817	382	268	280	180	1,927
Hentz, Morgan	881	835	701	502	274	3,193
Hilley, Sydney	880	586	529	491	391	2,877
Hippe, Saskia	321	803	517	330	193	2,164
Johnson, Willow	590	221	360	708	378	2,257
Linnehan, Alli	923	155	1,053	1,010	509	3,650
Lukes, Katie	86	494	160	343	180	1,263
McCage, Molly	374	574	944	547	408	2,847
McClendon, Deja	500	329	389	187	102	1,507
Mohler, Blake	80	28	500	327	86	1,021
Nuneviller, Brooke	364	941	583	755	551	3,194
Parker-Robinson, Nia	83	226	113	360	80	862
Pressley, Yossiana	359	611	230	538	305	2,043
Reed, Nia	433	308	228	180	280	1,429
Rosenthal, Jenna	675	748	261	362	338	2,384
Santos, Ray	92	505	280	264	280	1,421
Schlegel, Maria	98	124	180	279	180	861
Stalzer, Lindsay	360	500	86	383	223	1,552
Tomkom, Nootsara	579	145	750	632	369	2,475
Valentin-Anderson, Natalia	400	860	545	523	645	2,973
Vander Weide, Lindsey	481	500	854	524	510	2,869
Vélez Agosto, Nomaris	414	425	371	632	304	2,146
Watson, Karis	274	500	300	387	276	1,737
White, Kendall	500	258	378	462	435	2,033
Willis, Emma	500	580	313	318	89	1,800

2023 ATHLETES UNLIMITED VOLLEYBALL SEASON STATISTICS

RANK	PLAYER	SP	K	K/S	E	ATT.	PCT.	A	A/S	SET E	SA	SA/S	SE	TRA	RE	PCT.	D	D/S	BS	BS/S	BA	BA/S	LPTS
1	Edmond, Leah	42	208	4.95	60	484	.310	8	0.19	0	5	0.12	10	345	17	.470	136	3.24	25	0.60	0	0.00	3,944
2	Linnehan, Alli	42	155	3.69	34	472	.260	9	0.21	0	6	0.14	6	232	10	.490	111	2.64	22	0.52	0	0.00	3,650
3	Nuneviller, Brooke	43	162	3.77	32	440	.300	7	0.16	2	7	0.16	13	265	5	.550	140	3.26	3	0.07	0	0.00	3,194
4	Hentz, Morgan	42	0	0.00	0	1	.000	42	1.00	1	0	0.00	0	155	4	.650	204	4.86	0	0.00	0	0.00	3,193
5	Valentin-Anderson, Natalia	43	21	0.49	3	47	.380	500	11.63	8	12	0.28	13	2	0	.000	147	3.42	10	0.23	0	0.00	2,973
6	Hilley, Sydney	42	28	0.67	4	78	.310	509	12.12	6	11	0.26	6	4	0	.000	103	2.45	15	0.36	0	0.00	2,877
7	Vander Weide, Lindsey	35	97	2.77	32	312	.210	5	0.14	0	7	0.20	6	267	14	.520	67	1.91	10	0.29	0	0.00	2,869
8	McCage, Molly	41	118	2.88	21	227	.430	3	0.07	0	3	0.07	16	6	0	.500	30	0.73	19	0.46	17	0.41	2,847
9	De La Cruz, Bethania	31	154	4.97	37	356	.330	7	0.23	3	14	0.45	11	242	9	.520	74	2.39	6	0.19	0	0.00	2,807
10	Chaussee, Claire	41	209	5.10	65	592	.240	4	0.10	1	5	0.12	32	344	12	.530	100	2.44	14	0.34	0	0.00	2,800
11	Collazo, Génesis	41	69	1.68	30	234	.170	4	0.10	1	4	0.10	5	2	0	.500	98	2.39	21	0.51	0	0.00	2,715
12	Tomkom, Nootsara	40	6	0.15	1	28	.180	401	10.03	9	4	0.10	10	4	2	.000	124	3.10	4	0.10	0	0.00	2,475
13	Rosenthal, Jenna	41	84	2.05	17	197	.340	2	0.05	1	5	0.12	6	16	1	.440	40	0.98	17	0.41	18	0.44	2,384
14	Johnson, Willow	43	172	4.00	67	446	.240	2	0.05	1	3	0.07	18	1	0	1.000	87	2.02	16	0.37	0	0.00	2,257
15	Hippe, Saskia	39	119	3.05	57	350	.180	6	0.15	1	6	0.15	20	1	0	1.000	92	2.36	11	0.28	0	0.00	2,164
16	Vélez Agosto, Nomaris	43	0	0.00	0	0	.000	41	0.95	0	0	0.00	0	207	7	.570	175	4.07	0	0.00	0	0.00	2,146
17	Dixon, Tori	43	64	1.49	13	152	.340	7	0.16	1	2	0.05	5	11	0	.450	33	0.77	27	0.63	20	0.47	2,094
18	Pressley, Yossiana	38	116	3.05	49	313	.210	1	0.03	2	5	0.13	9	134	7	.370	98	2.58	13	0.34	0	0.00	2,043
19	White, Kendall	42	0	0.00	0	0	.000	38	0.90	0	0	0.00	0	229	11	.550	163	3.88	0	0.00	0	0.00	2,033
20	Cruz, Aury	37	67	1.81	31	228	.160	8	0.22	2	5	0.14	9	211	4	.570	107	2.89	5	0.14	0	0.00	2,009
21	Childress, Alisha	39	15	0.38	4	47	.230	424	10.87	15	5	0.13	7	0	0	.000	99	2.54	10	0.26	0	0.00	1,952
22	Hart, Danielle	18	37	2.06	10	95	.280	3	0.17	0	3	0.17	7	7	0	.570	16	0.89	16	0.89	14	0.78	1,927
23	Brown, Kaz	40	85	2.13	25	193	.310	3	0.08	1	2	0.05	5	7	1	.430	12	0.30	33	0.83	21	0.53	1,925
24	Bruns Tegenrot, Taylor	38	13	0.34	3	37	.270	128	3.37	1	2	0.05	3	0	0	.000	36	0.95	5	0.13	0	0.00	1,916
25	Benson, Amanda	43	0	0.00	0	0	.000	29	0.67	0	0	0.00	0	217	9	.630	136	3.16	0	0.00	0	0.00	1,907
26	Bastianelli, Ali	42	68	1.62	20	169	.280	5	0.12	0	6	0.14	18	9	0	.330	16	0.38	23	0.55	29	0.69	1,877
27	Willis, Emma	30	45	1.50	13	106	.300	3	0.10	0	2	0.07	7	6	1	.330	19	0.63	5	0.17	19	0.63	1,800
28	Watson, Karis	24	33	1.38	12	76	.280	4	0.17	0	2	0.08	10	6	2	.170	10	0.42	4	0.17	11	0.46	1,737
29	Stalzer, Lindsay	12	13	1.08	4	67	.130	1	0.08	0	0	0.00	3	24	2	.540	17	1.42	1	0.08	0	0.00	1,552
30	Gonzaga, Sassá	15	2	0.13	2	15	.000	3	0.20	0	0	0.00	0	47	1	.530	39	2.60	0	0.00	0	0.00	1,548
31	McClendon, Deja	15	14	0.93	10	62	.060	1	0.07	1	0	0.00	2	56	2	.480	40	2.67	1	0.07	0	0.00	1,507
32	Caffey, Kayla	27	48	1.78	15	91	.360	2	0.07	0	0	0.00	12	5	2	.000	11	0.41	24	0.89	8	0.30	1,505
33	Fairs, Erin	25	35	1.40	18	110	.150	6	0.24	0	3	0.12	7	165	12	.420	59	2.36	6	0.24	0	0.00	1,473
34	Reed, Nia	15	30	2.00	21	125	.070	2	0.13	0	1	0.07	0	0	0	.000	31	2.07	6	0.40	0	0.00	1,429
35	Santos, Ray	14	0	0.00	0	0	.000	0	0.00	0	1	0.07	2	0	0	.000	1	0.07	0	0.00	0	0.00	1,421
36	Fanning, Shelly	28	31	1.11	9	70	.310	4	0.14	0	6	0.21	7	3	2	.000	21	0.75	5	0.18	10	0.36	1,381
37	Edelman-Cagliari, Nicole	15	2	0.13	1	14	.070	22	1.47	1	0	0.00	2	0	0	.000	29	1.93	5	0.33	0	0.00	1,303
38	Grote, Marin	8	9	1.13	3	21	.290	0	0.00	0	4	0.50	6	0	0	.000	0	0.00	2	0.25	3	0.38	1,286
39	Lukes, Katie	27	62	2.30	42	223	.090	5	0.19	0	0	0.00	8	182	6	.450	30	1.11	6	0.22	0	0.00	1,263
40	Abbott, Symone	7	10	1.43	7	37	.080	0	0.00	0	2	0.29	2	6	0	.330	8	1.14	0	0.00	0	0.00	1,168
41	Blossom, Gabby	19	0	0.00	0	1	.000	28	1.47	0	0	0.00	1	0	0	.000	15	0.79	0	0.00	0	0.00	1,045
42	Mohler, Blake	10	5	0.50	6	23	-.040	0	0.00	0	0	0.00	1	2	0	.500	7	0.70	5	0.50	2	0.20	941
43	Parker-Robinson, Nia	8	12	1.50	9	35	.090	0	0.00	0	1	0.13	3	10	0	.300	4	0.50	0	0.00	0	0.00	862
44	Schlegel, Maria	12	8	0.67	5	36	.080	2	0.17	1	0	0.00	3	37	1	.650	19	1.58	0	0.00	0	0.00	861
45	Adekunle, Anota	1	2	2.00	0	3	.670	0	0.00	0	0	0.00	0	0	0	.000	0	0.00	0	0.00	0	0.00	236

2023 ATHLETES UNLIMITED VOLLEYBALL STATISTICS | WEEK ONE

RANK	PLAYER	SP	K	K/S	E	ATT.	PCT.	A	A/S	SET E	SA	SA/S	SE	TRA	RE	PCT.	D	D/S	BS	BS/S	BA	BA/S	LPTS
1	Edmond, Leah	9	46	5.11	15	97	.320	1	0.11	0	1	0.11	4	84	4	.510	21	2.33	9	1.00	0	0.00	1,028
2	Linnehan, Alli	9	32	3.56	7	99	.253	2	0.22	0	1	0.11	2	44	1	.480	24	2.67	5	0.56	0	0.00	923
3	Hentz, Morgan	9	0	0.00	0	0	.000	8	0.89	0	0	0.00	0	31	0	.680	57	6.33	0	0.00	0	0.00	881
4	Hilley, Sydney	9	6	0.67	1	13	.385	111	12.33	2	2	0.22	0	2	0	.000	20	2.22	7	0.78	0	0.00	880
5	Hart, Danielle	9	17	1.89	4	45	.289	0	0.00	0	2	0.22	3	3	0	1.000	11	1.22	12	1.33	12	1.33	817
6	Collazo, Génesis	9	14	1.56	7	42	.167	2	0.22	0	1	0.11	0	0	0	.000	23	2.56	7	0.78	0	0.00	745
7	De La Cruz, Bethania	10	47	4.70	9	107	.355	2	0.20	1	6	0.60	4	74	2	.550	22	2.20	1	0.10	0	0.00	729
8	Rosenthal, Jenna	9	20	2.22	3	48	.354	1	0.11	0	0	0.00	1	1	0	.000	6	0.67	1	0.11	12	1.33	675
9	Johnson, Willow	10	50	5.00	15	117	.299	0	0.00	0	0	0.00	4	1	0	1.000	18	1.80	5	0.50	0	0.00	590
10	Tomkom, Nootsara	8	0	0.00	0	4	.000	88	11.00	1	2	0.25	0	0	0	.000	23	2.88	2	0.25	0	0.00	579
11	Chaussee, Claire	8	31	3.88	12	89	.213	0	0.00	0	1	0.13	5	63	3	.480	18	2.25	4	0.50	0	0.00	578
12	McClendon, Deja	0	0	0.00	0	0	.000	0	0.00	0	0	0.00	0	0	0	.000	0	0.00	0	0.00	0	0.00	500
12	White, Kendall	9	0	0.00	0	0	.000	10	1.11	0	0	0.00	0	41	1	.630	34	3.78	0	0.00	0	0.00	500
12	Willis, Emma	0	0	0.00	0	0	.000	0	0.00	0	0	0.00	0	0	0	.000	0	0.00	0	0.00	0	0.00	500
15	Bruns Tegenrot, Taylor	9	0	0.00	0	1	.000	0	0.00	0	0	0.00	1	0	0	.000	1	0.11	0	0.00	0	0.00	492
16	Childress, Alisha	10	4	0.40	2	15	.133	127	12.70	2	0	0.00	2	0	0	.000	27	2.70	3	0.30	0	0.00	485
17	Vander Weide, Lindsey	9	22	2.44	8	75	.187	1	0.11	0	1	0.11	2	79	4	.520	24	2.67	1	0.11	0	0.00	481
18	Bastianelli, Ali	9	22	2.44	5	39	.436	1	0.11	0	3	0.33	4	3	0	.670	2	0.22	1	0.11	4	0.44	475
19	Cruz, Aury	7	17	2.43	6	43	.256	2	0.29	0	0	0.00	1	36	1	.470	11	1.57	2	0.29	0	0.00	439
20	Reed, Nia	7	18	2.57	10	71	.113	1	0.14	0	1	0.14	0	0	0	.000	12	1.71	3	0.43	0	0.00	433
21	Vélez Agosto, Nomaris	10	0	0.00	0	0	.000	8	0.80	0	0	0.00	0	37	2	.570	36	3.60	0	0.00	0	0.00	414
22	Caffey, Kayla	9	13	1.44	5	23	.348	1	0.11	0	0	0.00	3	3	1	.000	6	0.67	10	1.11	4	0.44	407
23	Valentin-Anderson, Natalia	10	3	0.30	1	10	.200	91	9.10	2	2	0.20	1	0	0	.000	40	4.00	4	0.40	0	0.00	400
24	McCage, Molly	8	16	2.00	3	35	.371	1	0.13	0	0	0.00	6	0	0	.000	3	0.38	2	0.25	5	0.63	374
25	Nuneviller, Brooke	10	29	2.90	8	79	.266	1	0.10	0	1	0.10	2	58	1	.550	22	2.20	1	0.10	0	0.00	364
26	Stalzer, Lindsay	0	0	0.00	0	0	.000	0	0.00	0	0	0.00	0	0	0	.000	0	0.00	0	0.00	0	0.00	360
27	Pressley, Yossiana	8	17	2.13	11	61	.098	0	0.00	0	0	0.00	0	41	2	.370	9	1.13	2	0.25	0	0.00	359
28	Hippe, Saskia	10	37	3.70	16	105	.200	2	0.20	0	0	0.00	2	0	0	.000	27	2.70	1	0.10	0	0.00	321
29	Edelman-Cagliari, Nicole	4	1	0.25	0	4	.250	12	3.00	1	0	0.00	1	0	0	.000	5	1.25	1	0.25	0	0.00	317
30	Gonzaga, Sassá	4	1	0.25	2	6	-.167	0	0.00	0	0	0.00	0	8	0	.630	7	1.75	0	0.00	0	0.00	309
31	Grote, Marin	1	0	0.00	0	2	.000	0	0.00	0	0	0.00	1	0	0	.000	0	0.00	1	1.00	1	1.00	286
32	Brown, Kaz	7	15	2.14	5	38	.263	0	0.00	0	0	0.00	2	0	0	.000	1	0.14	9	1.29	2	0.29	279
33	Watson, Karis	10	11	1.10	3	26	.308	1	0.10	0	1	0.10	5	2	1	.500	6	0.60	1	0.10	3	0.30	274
34	Benson, Amanda	10	0	0.00	0	0	.000	12	1.20	0	0	0.00	0	56	3	.550	26	2.60	0	0.00	0	0.00	248
35	Dixon, Tori	10	15	1.50	5	38	.263	2	0.20	0	2	0.20	1	2	0	.500	8	0.80	3	0.30	3	0.30	242
36	Adekunle, Anota	1	2	2.00	0	3	.667	0	0.00	0	0	0.00	0	0	0	.000	0	0.00	0	0.00	0	0.00	236
37	Blossom, Gabby	6	0	0.00	0	0	.000	0	0.00	0	0	0.00	0	0	0	.000	1	0.17	0	0.00	0	0.00	225
38	Fairs, Erin	5	0	0.00	0	0	.000	1	0.20	0	0	0.00	0	8	1	.000	4	0.80	0	0.00	0	0.00	223
39	Abbott, Symone	0	0	0.00	0	0	.000	0	0.00	0	0	0.00	0	0	0	.000	0	0.00	0	0.00	0	0.00	220
40	Schlegel, Maria	5	3	0.60	3	12	.000	0	0.00	0	0	0.00	1	16	1	.630	6	1.20	0	0.00	0	0.00	98
41	Santos, Ray	3	0	0.00	0	0	.000	0	0.00	0	1	0.33	0	0	0	.000	0	0.00	0	0.00	0	0.00	92
42	Fanning, Shelly	3	4	1.33	3	12	.083	0	0.00	0	0	0.00	0	0	0	.000	0	0.00	1	0.33	1	0.33	90
43	Lukes, Katie	9	13	1.44	16	58	-.052	3	0.33	0	0	0.00	4	59	0	.490	11	1.22	1	0.11	0	0.00	86
44	Parker-Robinson, Nia	2	5	2.50	4	16	.063	0	0.00	0	0	0.00	0	10	0	.300	1	0.50	0	0.00	0	0.00	83

2023 ATHLETES UNLIMITED VOLLEYBALL STATISTICS | WEEK TWO

RANK	PLAYER	SP	K	K/S	E	ATT.	PCT.	A	A/S	SET E	SA	SA/S	SE	TRA	RE	PCT.	D	D/S	BS	BS/S	BA	BA/S	LPTS
1	De La Cruz, Bethania	9	53	5.89	8	111	.405	1	0.11	1	4	0.44	2	60	2	.500	24	2.67	2	0.22	0	0.00	1,145
2	Nuneviller, Brooke	9	31	3.44	3	84	.333	1	0.11	0	1	0.11	3	57	4	.510	34	3.78	0	0.00	0	0.00	941
3	Valentin-Anderson, Natalia	9	3	0.33	0	6	.500	126	14.00	1	7	0.78	4	0	0	.000	28	3.11	3	0.33	0	0.00	860
4	Hentz, Morgan	9	0	0.00	0	0	.000	11	1.22	0	0	0.00	0	33	2	.580	43	4.78	0	0.00	0	0.00	835
5	Chaussee, Claire	9	49	5.44	13	126	.286	0	0.00	0	1	0.11	8	71	4	.540	23	2.56	4	0.44	0	0.00	819
6	Hippe, Saskia	9	29	3.22	12	83	.205	1	0.11	0	4	0.44	4	0	0	.000	22	2.44	4	0.44	0	0.00	803
7	Rosenthal, Jenna	9	21	2.33	2	44	.432	0	0.00	0	1	0.11	1	4	0	.250	10	1.11	4	0.44	0	0.00	748
8	Edmond, Leah	9	44	4.89	10	105	.324	5	0.56	0	2	0.22	1	82	7	.440	36	4.00	4	0.44	0	0.00	709
9	Cruz, Aury	9	16	1.78	5	53	.208	1	0.11	0	3	0.33	1	47	0	.620	29	3.22	1	0.11	0	0.00	634
10	Pressley, Yossiana	9	22	2.44	6	54	.296	0	0.00	1	3	0.33	3	0	0	.000	28	3.11	1	0.11	0	0.00	611
11	Hilley, Sydney	9	5	0.56	2	15	.200	110	12.22	2	3	0.33	1	1	0	.000	13	1.44	1	0.11	0	0.00	586
12	Willis, Emma	9	11	1.22	3	23	.348	2	0.22	0	1	0.11	4	0	0	.000	2	0.22	2	0.22	6	0.67	580
13	McCage, Molly	9	27	3.00	4	52	.442	2	0.22	0	1	0.11	2	0	0	.000	10	1.11	6	0.67	3	0.33	574
14	Dixon, Tori	9	15	1.67	1	32	.438	1	0.11	0	0	0.00	1	4	0	.500	10	1.11	5	0.56	2	0.22	539
15	Santos, Ray	3	0	0.00	0	0	.000	0	0.00	0	0	0.00	0	0	0	.000	1	0.33	0	0.00	0	0.00	505
16	Stalzer, Lindsay	1	0	0.00	0	0	.000	0	0.00	0	0	0.00	0	0	0	.000	0	0.00	0	0.00	0	0.00	500
16	Vander Weide, Lindsey	2	0	0.00	0	1	.000	0	0.00	0	0	0.00	0	0	0	.000	0	0.00	0	0.00	0	0.00	500
16	Watson, Karis	0	0	0.00	0	0	.000	0	0.00	0	0	0.00	0	0	0	.000	0	0.00	0	0.00	0	0.00	500
19	Benson, Amanda	9	0	0.00	0	0	.000	3	0.33	0	0	0.00	0	52	3	.670	28	3.11	0	0.00	0	0.00	495
20	Lukes, Katie	7	32	4.57	8	88	.273	1	0.14	0	0	0.00	3	65	2	.480	15	2.14	2	0.29	0	0.00	494
21	Childress, Alisha	9	5	0.56	0	11	.455	114	12.67	5	1	0.11	3	0	0	.000	30	3.33	0	0.00	0	0.00	452
22	Caffey, Kayla	6	12	2.00	4	24	.333	0	0.00	0	0	0.00	2	0	0	.000	1	0.17	6	1.00	0	0.00	449
23	Vélez Agosto, Nomaris	9	0	0.00	0	0	.000	6	0.67	0	0	0.00	0	42	3	.600	37	4.11	0	0.00	0	0.00	425
24	Fanning, Shelly	9	12	1.33	3	32	.281	2	0.22	0	4	0.44	3	0	0	.000	12	1.33	3	0.33	5	0.56	412
25	Hart, Danielle	3	6	2.00	1	19	.263	0	0.00	0	0	0.00	1	0	0	.000	2	0.67	2	0.67	0	0.00	382
26	Gonzaga, Sassá	1	0	0.00	0	2	.000	0	0.00	0	0	0.00	0	3	0	.670	2	2.00	0	0.00	0	0.00	334
27	McClendon, Deja	3	5	1.67	3	20	.100	0	0.00	0	0	0.00	0	9	0	.560	11	3.67	0	0.00	0	0.00	329
28	Edelman-Cagliari, Nicole	0	0	0.00	0	0	.000	0	0.00	0	0	0.00	0	0	0	.000	0	0.00	0	0.00	0	0.00	320
29	Collazo, Génesis	8	12	1.50	8	49	.082	0	0.00	0	0	0.00	0	0	0	.000	12	1.50	3	0.38	0	0.00	316
30	Reed, Nia	1	0	0.00	1	2	-.500	0	0.00	0	0	0.00	0	0	0	.000	0	0.00	0	0.00	0	0.00	308
31	Bruns Tegenrot, Taylor	7	6	0.86	0	16	.375	49	7.00	1	1	0.14	1	0	0	.000	15	2.14	3	0.43	0	0.00	260
32	White, Kendall	9	0	0.00	0	0	.000	5	0.56	0	0	0.00	0	55	4	.600	39	4.33	0	0.00	0	0.00	258
33	Parker-Robinson, Nia	2	2	1.00	2	7	.000	0	0.00	0	1	0.50	1	0	0	.000	2	1.00	0	0.00	0	0.00	226
34	Johnson, Willow	9	29	3.22	16	87	.149	0	0.00	1	2	0.22	3	0	0	.000	21	2.33	4	0.44	0	0.00	221
35	Grote, Marin	0	0	0.00	0	0	.000	0	0.00	0	0	0.00	0	0	0	.000	0	0.00	0	0.00	0	0.00	220
36	Brown, Kaz	9	19	2.11	6	38	.342	0	0.00	0	0	0.00	0	1	0	.000	3	0.33	6	0.67	4	0.44	215
37	Blossom, Gabby	4	0	0.00	0	0	.000	0	0.00	0	0	0.00	1	0	0	.000	0	0.00	0	0.00	0	0.00	212
38	Fairs, Erin	8	21	2.63	6	55	.273	1	0.13	0	0	0.00	2	66	7	.470	16	2.00	2	0.25	0	0.00	203
39	Linnehan, Alli	9	19	2.11	14	95	.053	3	0.33	0	1	0.11	0	59	4	.470	12	1.33	5	0.56	0	0.00	167
40	Tomkom, Nootsara	8	0	0.00	0	2	.000	33	4.13	1	1	0.13	1	0	0	.000	16	2.00	0	0.00	0	0.00	145
41	Schlegel, Maria	3	4	1.33	1	22	.136	1	0.33	1	0	0.00	2	20	0	.650	13	4.33	0	0.00	0	0.00	124
42	Bastianelli, Ali	9	5	0.56	6	35	-.029	1	0.11	0	0	0.00	4	0	0	.000	3	0.33	6	0.67	8	0.89	80
43	Abbott, Symone	1	1	1.00	1	5	.000	0	0.00	0	0	0.00	0	0	0	.000	0	0.00	0	0.00	0	0.00	36
44	Mohler, Blake	1	0	0.00	1	1	-1.000	0	0.00	0	0	0.00	0	0	0	.000	0	0.00	0	0.00	0	0.00	28

2023 ATHLETES UNLIMITED VOLLEYBALL STATISTICS | WEEK THREE

RANK	PLAYER	SP	K	K/S	E	ATT.	PCT.	A	A/S	SET E	SA	SA/S	SE	TRA	RE	PCT.	D	D/S	BS	BS/S	BA	BA/S	LPTS
1	Linnehan, Alli	9	37	4.11	4	93	.355	4	0.44	0	1	0.11	3	36	0	.610	21	2.33	7	0.78	0	0.00	1,053
2	McCage, Molly	9	32	3.56	2	51	.588	0	0.00	0	1	0.11	3	2	0	.000	8	0.89	3	0.33	4	0.44	944
3	Edmond, Leah	9	49	5.44	13	111	.324	0	0.00	0	1	0.11	3	77	0	.420	33	3.67	7	0.78	0	0.00	877
4	Vander Weide, Lindsey	9	26	2.89	8	81	.222	2	0.22	0	4	0.44	3	88	2	.520	12	1.33	4	0.44	0	0.00	854
5	Bastianelli, Ali	9	15	1.67	1	35	.400	2	0.22	0	1	0.11	3	0	0	.000	7	0.78	10	1.11	10	1.11	773
6	Tomkom, Nootsara	9	3	0.33	0	4	.750	95	10.56	4	0	0.00	4	2	2	.000	31	3.44	0	0.00	0	0.00	750
7	Collazo, Génesis	9	19	2.11	8	63	.175	1	0.11	0	0	0.00	2	0	0	.000	26	2.89	6	0.67	0	0.00	743
8	Hentz, Morgan	9	0	0.00	0	1	.000	9	1.00	0	0	0.00	0	25	2	.720	32	3.56	0	0.00	0	0.00	701
9	Nuneviller, Brooke	9	40	4.44	9	108	.287	0	0.00	1	2	0.22	3	55	0	.510	27	3.00	1	0.11	0	0.00	583
10	Dixon, Tori	9	9	1.00	2	23	.304	1	0.11	0	0	0.00	1	3	0	.330	3	0.33	10	1.11	7	0.78	572
11	Bruns Tegenrot, Taylor	9	1	0.11	0	4	.250	11	1.22	0	0	0.00	1	0	0	.000	2	0.22	2	0.22	0	0.00	545
11	Valentin-Anderson, Natalia	9	6	0.67	0	13	.462	107	11.89	4	0	0.00	3	0	0	.000	30	3.33	1	0.11	0	0.00	545
13	Hilley, Sydney	9	5	0.56	0	15	.333	98	10.89	1	1	0.11	2	0	0	.000	39	4.33	1	0.11	0	0.00	529
14	Hippe, Saskia	8	23	2.88	9	70	.200	0	0.00	0	1	0.13	4	0	0	.000	21	2.63	3	0.38	0	0.00	517
15	Abbott, Symone	1	1	1.00	0	3	.333	0	0.00	0	0	0.00	0	1	0	.000	0	0.00	0	0.00	0	0.00	508
16	Mohler, Blake	1	0	0.00	0	0	.000	0	0.00	0	0	0.00	0	0	0	.000	0	0.00	0	0.00	0	0.00	500
17	Benson, Amanda	9	0	0.00	0	0	.000	6	0.67	0	0	0.00	0	42	1	.600	34	3.78	0	0.00	0	0.00	494
18	Chaussee, Claire	9	44	4.89	19	144	.174	0	0.00	0	0	0.00	4	80	2	.500	24	2.67	1	0.11	0	0.00	420
19	Cruz, Aury	9	22	2.44	12	71	.141	1	0.11	1	1	0.11	2	49	0	.630	41	4.56	1	0.11	0	0.00	416
20	Brown, Kaz	9	17	1.89	7	47	.213	1	0.11	0	1	0.11	0	2	0	.500	2	0.22	2	0.22	7	0.78	395
21	McClendon, Deja	6	6	1.00	3	28	.107	1	0.17	1	0	0.00	0	30	2	.500	18	3.00	1	0.17	0	0.00	389
22	White, Kendall	9	0	0.00	0	0	.000	8	0.89	0	0	0.00	0	52	1	.500	30	3.33	0	0.00	0	0.00	378
23	Vélez Agosto, Nomaris	9	0	0.00	0	0	.000	7	0.78	0	0	0.00	0	57	0	.470	38	4.22	0	0.00	0	0.00	371
24	Johnson, Willow	9	25	2.78	15	79	.127	0	0.00	0	0	0.00	2	0	0	.000	16	1.78	3	0.33	0	0.00	360
25	Childress, Alisha	9	2	0.22	0	9	.222	90	10.00	2	4	0.44	1	0	0	.000	21	2.33	1	0.11	0	0.00	359
26	Gonzaga, Sassá	8	1	0.13	0	7	.143	3	0.38	0	0	0.00	0	28	0	.610	26	3.25	0	0.00	0	0.00	355
27	Willis, Emma	8	15	1.88	5	32	.313	1	0.13	0	1	0.13	2	1	0	.000	12	1.50	1	0.13	2	0.25	313
28	Watson, Karis	4	9	2.25	2	16	.438	2	0.50	0	1	0.25	1	2	1	.000	2	0.50	2	0.50	2	0.50	300
29	Fairs, Erin	0	0	0.00	0	0	.000	0	0.00	0	0	0.00	0	0	0	.000	0	0.00	0	0.00	0	0.00	280
29	Grote, Marin	0	0	0.00	0	0	.000	0	0.00	0	0	0.00	0	0	0	.000	0	0.00	0	0.00	0	0.00	280
29	Santos, Ray	1	0	0.00	0	0	.000	0	0.00	0	0	0.00	0	0	0	.000	0	0.00	0	0.00	0	0.00	280
32	Hart, Danielle	6	14	2.33	5	31	.290	3	0.50	0	1	0.17	3	4	0	.250	3	0.50	2	0.33	2	0.33	268
33	Rosenthal, Jenna	9	18	2.00	7	46	.239	1	0.11	1	2	0.22	1	4	1	.500	6	0.67	4	0.44	3	0.33	261
34	Pressley, Yossiana	6	16	2.67	10	56	.107	0	0.00	0	0	0.00	2	32	3	.250	14	2.33	4	0.67	0	0.00	230
35	Reed, Nia	7	12	1.71	10	52	.038	1	0.14	0	0	0.00	0	0	0	.000	19	2.71	3	0.43	0	0.00	228
36	Caffey, Kayla	7	12	1.71	4	23	.348	0	0.00	0	0	0.00	3	2	1	.000	3	0.43	5	0.71	1	0.14	209
37	Blossom, Gabby	1	0	0.00	0	0	.000	0	0.00	0	0	0.00	0	0	0	.000	0	0.00	0	0.00	0	0.00	180
37	Schlegel, Maria	1	0	0.00	0	0	.000	0	0.00	0	0	0.00	0	0	0	.000	0	0.00	0	0.00	0	0.00	180
39	Lukes, Katie	8	14	1.75	14	61	.000	1	0.13	0	0	0.00	0	43	3	.370	3	0.38	2	0.25	0	0.00	160
40	Fanning, Shelly	5	3	1.00	0	8	.500	1	0.00	0	0	1.00	1	0	0	.000	1	0.00	0	0.00	2	1.00	146
41	Edelman-Cagliari, Nicole	2	0	0.00	0	0	.000	10	0.00	0	0	0.00	0	0	0	.000	2	0.00	0	0.00	0	0.00	140
42	Parker-Robinson, Nia	2	5	0.00	3	12	.000	0	0.00	0	0	0.00	2	0	0	.000	1	0.00	0	0.00	0	0.00	113
43	Stalzer, Lindsay	4	1	1.60	2	17	-.030	0	0.00	0	0	0.00	2	7	2	.140	4	0.60	0	0.20	0	0.00	86

2023 ATHLETES UNLIMITED VOLLEYBALL STATISTICS | WEEK FOUR

RANK	PLAYER	SP	K	K/S	E	ATT.	PCT.	A	A/S	SET E	SA	SA/S	SE	TRA	RE	PCT.	D	D/S	BS	BS/S	BA	BA/S	LPTS
1	Linnehan, Alli	9	38	4.22	5	100	.330	0	0.00	0	3	0.33	1	49	1	.430	36	4.00	4	0.44	0	0.00	1,010
2	Edmond, Leah	9	44	4.89	15	107	.271	1	0.11	0	0	0.00	0	57	3	.600	31	3.44	4	0.44	0	0.00	792
3	Nuneviller, Brooke	9	38	4.22	9	109	.266	4	0.44	0	1	0.11	1	53	0	.580	33	3.67	1	0.11	0	0.00	755
4	Johnson, Willow	9	42	4.67	13	95	.305	2	0.22	0	1	0.11	6	0	0	.000	18	2.00	1	0.11	0	0.00	708
5	Chaussee, Claire	9	53	5.89	15	147	.259	3	0.33	0	2	0.22	11	82	2	.540	26	2.89	3	0.33	0	0.00	640
6	Tomkom, Nootsara	9	2	0.22	0	12	.167	102	11.33	2	0	0.00	2	0	0	.000	26	2.89	2	0.22	0	0.00	632
6	Vélez Agosto, Nomaris	9	0	0.00	0	0	.000	17	1.89	0	0	0.00	0	48	2	.670	43	4.78	0	0.00	0	0.00	632
8	Brown, Kaz	9	22	2.44	3	43	.442	1	0.11	0	0	0.00	2	3	1	.330	4	0.44	11	1.22	6	0.67	599
9	Fairs, Erin	9	14	1.56	8	47	.128	4	0.44	0	3	0.33	4	69	4	.430	32	3.56	3	0.33	0	0.00	592
10	De La Cruz, Bethania	6	26	4.33	9	62	.274	2	0.33	0	2	0.33	3	69	2	.510	16	2.67	2	0.33	0	0.00	547
10	McCage, Molly	9	22	2.44	9	51	.255	0	0.00	0	1	0.11	4	4	0	.750	5	0.56	6	0.67	3	0.33	547
12	Pressley, Yossiana	9	33	3.67	13	78	.256	1	0.11	1	1	0.11	4	24	1	.500	29	3.22	5	0.56	0	0.00	538
13	Vander Weide, Lindsey	9	29	3.22	11	98	.184	2	0.22	0	2	0.22	1	70	7	.460	19	2.11	3	0.33	0	0.00	524
14	Valentin-Anderson, Natalia	9	4	0.44	2	10	.200	105	11.67	1	2	0.22	4	2	0	.000	23	2.56	2	0.22	0	0.00	523
15	Hentz, Morgan	9	0	0.00	0	0	.000	7	0.78	1	0	0.00	0	33	0	.640	42	4.67	0	0.00	0	0.00	502
16	Hilley, Sydney	9	6	0.67	1	22	.227	113	12.56	1	5	0.56	2	1	0	.000	17	1.89	4	0.44	0	0.00	491
17	Collazo, Génesis	9	10	1.11	5	42	.119	1	0.11	1	3	0.33	2	2	0	.500	28	3.11	3	0.33	0	0.00	482
18	Childress, Alisha	8	4	0.50	2	12	.167	92	11.50	6	0	0.00	1	0	0	.000	21	2.63	6	0.75	0	0.00	476
19	White, Kendall	9	0	0.00	0	0	.000	9	1.00	0	0	0.00	0	54	4	.440	35	3.89	0	0.00	0	0.00	462
20	Dixon, Tori	9	15	1.67	3	34	.353	0	0.00	1	0	0.00	1	1	0	1.000	3	0.33	6	0.67	5	0.56	423
21	Bastianelli, Ali	9	16	1.78	3	26	.500	1	0.11	0	2	0.22	5	2	0	.000	3	0.33	3	0.33	5	0.56	418
22	Fanning, Shelly	5	5	1.00	2	8	.375	0	0.00	0	0	0.00	0	0	0	.000	3	0.60	0	0.00	0	0.00	391
23	Watson, Karis	7	12	1.71	5	29	.241	1	0.14	0	0	0.00	4	1	0	.000	2	0.29	0	0.00	6	0.86	387
24	Stalzer, Lindsay	4	10	2.50	2	40	.200	1	0.25	0	0	0.00	1	17	0	.710	10	2.50	0	0.00	0	0.00	383
25	Bruns Tegenrot, Taylor	7	2	0.29	1	4	.250	6	0.86	0	0	0.00	0	0	0	.000	1	0.14	0	0.00	0	0.00	375
26	Benson, Amanda	9	0	0.00	0	0	.000	3	0.33	0	0	0.00	0	39	1	.640	30	3.33	0	0.00	0	0.00	367
27	Rosenthal, Jenna	8	12	1.50	4	30	.267	0	0.00	0	0	0.00	2	2	0	.500	14	1.75	6	0.75	3	0.38	362
28	Parker-Robinson, Nia	2	0	0.00	0	0	.000	0	0.00	0	0	0.00	0	0	0	.000	0	0.00	0	0.00	0	0.00	360
29	Lukes, Katie	3	3	1.00	4	16	-.063	0	0.00	0	0	0.00	1	15	1	.330	1	0.33	1	0.33	0	0.00	343
30	Hippe, Saskia	9	23	2.56	16	78	.090	3	0.33	0	1	0.11	10	0	0	.000	19	2.11	3	0.33	0	0.00	330
31	Mohler, Blake	5	4	0.80	2	14	.143	0	0.00	0	0	0.00	1	2	0	.500	5	1.00	3	0.60	2	0.40	327
32	Willis, Emma	9	16	1.78	4	39	.308	0	0.00	0	0	0.00	1	2	0	.500	4	0.44	2	0.22	10	1.11	318
33	Grote, Marin	5	6	1.20	3	12	.250	0	0.00	0	4	0.80	3	0	0	.000	0	0.00	1	0.20	1	0.20	310
34	Blossom, Gabby	3	0	0.00	0	1	.000	15	5.00	0	0	0.00	0	0	0	.000	4	1.33	0	0.00	0	0.00	295
35	Edelman-Cagliari, Nicole	5	1	0.20	1	10	.000	0	0.00	0	0	0.00	0	0	0	.000	8	1.60	4	0.80	0	0.00	284
36	Abbott, Symone	0	0	0.00	0	0	.000	0	0.00	0	0	0.00	0	0	0	.000	0	0.00	0	0.00	0	0.00	280
36	Hart, Danielle	0	0	0.00	0	0	.000	0	0.00	0	0	0.00	0	0	0	.000	0	0.00	0	0.00	0	0.00	280
38	Schlegel, Maria	2	1	0.50	1	2	.000	1	0.50	0	0	0.00	0	1	0	1.000	0	0.00	0	0.00	0	0.00	279
39	Gonzaga, Sassá	2	0	0.00	0	0	.000	0	0.00	0	0	0.00	0	8	1	.130	4	2.00	0	0.00	0	0.00	270
40	Santos, Ray	7	0	0.00	0	0	.000	0	0.00	0	0	0.00	2	0	0	.000	0	0.00	0	0.00	0	0.00	264
41	Cruz, Aury	7	5	0.71	5	26	.000	2	0.29	0	0	0.00	2	39	3	.440	15	2.14	1	0.14	0	0.00	243
42	Caffey, Kayla	1	1	1.00	1	3	.000	0	0.00	0	0	0.00	0	0	0	.000	0	0.00	1	1.00	2	2.00	192
43	McClendon, Deja	3	0	0.00	1	5	-.200	0	0.00	0	0	0.00	1	7	0	.140	5	1.67	0	0.00	0	0.00	187
44	Reed, Nia	0	0	0.00	0	0	.000	0	0.00	0	0	0.00	0	0	0	.000	0	0.00	0	0.00	0	0.00	180

2023 ATHLETES UNLIMITED VOLLEYBALL STATISTICS | WEEK FIVE

RANK	PLAYER	SP	K	K/S	E	ATT.	PCT.	A	A/S	SET E	SA	SA/S	SE	TRA	RE	PCT.	D	D/S	BS	BS/S	BA	BA/S	LPTS
1	Valentin-Anderson, Natalia	6	5	0.83	0	8	.630	71	11.83	0	1	0.17	1	0	0	.000	26	4.33	0	0.00	0	0.00	645
2	Nuneviller, Brooke	6	24	4.00	3	60	.350	1	0.17	1	2	0.33	4	42	0	.640	24	4.00	0	0.00	0	0.00	551
3	Edmond, Leah	6	25	4.17	7	64	.280	1	0.17	0	1	0.17	2	45	3	.380	15	2.50	1	0.17	0	0.00	538
4	Vander Weide, Lindsey	6	20	3.33	5	57	.260	0	0.00	0	0	0.00	0	30	1	.630	12	2.00	2	0.33	0	0.00	510
5	Linnehan, Alli	6	29	4.83	4	85	.290	0	0.00	0	0	0.00	0	43	3	.490	18	3.00	1	0.17	0	0.00	509
6	Brown, Kaz	6	12	2.00	4	27	.300	1	0.17	1	1	0.17	1	1	0	1.000	2	0.33	5	0.83	2	0.33	437
7	White, Kendall	6	0	0.00	0	0	.000	6	1.00	0	0	0.00	0	27	1	.670	25	4.17	0	0.00	0	0.00	435
8	Collazo, Génesis	6	14	2.33	2	38	.320	0	0.00	0	0	0.00	1	0	0	.000	9	1.50	2	0.33	0	0.00	429
9	McCage, Molly	6	21	3.50	3	38	.470	0	0.00	0	0	0.00	1	0	0	.000	4	0.67	2	0.33	2	0.33	408
10	Hilley, Sydney	6	6	1.00	0	13	.460	77	12.83	0	0	0.00	1	0	0	.000	14	2.33	2	0.33	0	0.00	391
11	De La Cruz, Bethania	6	28	4.67	11	76	.220	2	0.33	1	2	0.33	2	39	3	.510	12	2.00	1	0.17	0	0.00	386
12	Johnson, Willow	6	26	4.33	8	68	.260	0	0.00	0	0	0.00	3	0	0	.000	14	2.33	3	0.50	0	0.00	378
13	Tomkom, Nootsara	6	1	0.17	1	6	.000	83	13.83	1	1	0.17	3	2	0	.000	28	4.67	0	0.00	0	0.00	369
14	Chaussee, Claire	6	32	5.33	6	86	.300	1	0.17	1	1	0.17	4	48	1	.670	9	1.50	2	0.33	0	0.00	343
15	Fanning, Shelly	6	7	1.17	1	10	.600	1	0.17	0	2	0.33	3	3	2	.000	5	0.83	1	0.17	2	0.33	342
16	Rosenthal, Jenna	6	13	2.17	1	29	.410	0	0.00	0	2	0.33	1	5	0	.600	4	0.67	2	0.33	0	0.00	338
17	Dixon, Tori	6	10	1.67	2	25	.320	3	0.50	0	0	0.00	1	1	0	.000	9	1.50	3	0.50	3	0.50	318
18	Pressley, Yossiana	6	28	4.67	9	64	.300	0	0.00	0	1	0.17	0	37	1	.410	18	3.00	1	0.17	0	0.00	305
19	Vélez Agosto, Nomaris	6	0	0.00	0	0	.000	3	0.50	0	0	0.00	0	23	0	.610	21	3.50	0	0.00	0	0.00	304
20	Benson, Amanda	6	0	0.00	0	0	.000	5	0.83	0	0	0.00	0	28	1	.750	18	3.00	0	0.00	0	0.00	303
21	Gonzaga, Sassá	0	0	0.00	0	0	.000	0	0.00	0	0	0.00	0	0	0	.000	0	0.00	0	0.00	0	0.00	280
21	Reed, Nia	0	0	0.00	0	0	.000	0	0.00	0	0	0.00	0	0	0	.000	0	0.00	0	0.00	0	0.00	280
21	Santos, Ray	0	0	0.00	0	0	.000	0	0.00	0	0	0.00	0	0	0	.000	0	0.00	0	0.00	0	0.00	280
24	Cruz, Aury	5	7	1.40	3	35	.110	2	0.40	1	1	0.20	3	40	0	.680	11	2.20	0	0.00	0	0.00	277
25	Watson, Karis	3	1	0.33	2	5	-.200	0	0.00	0	0	0.00	0	1	0	.000	0	0.00	1	0.33	0	0.00	276
26	Hentz, Morgan	6	0	0.00	0	0	.000	7	1.17	0	0	0.00	0	33	0	.640	30	5.00	0	0.00	0	0.00	274
27	Caffey, Kayla	4	10	2.50	1	18	.500	1	0.25	0	0	0.00	4	0	0	.000	1	0.25	2	0.50	1	0.25	248
28	Bruns Tegenrot, Taylor	6	4	0.67	2	12	.170	62	10.33	0	1	0.17	0	0	0	.000	17	2.83	0	0.00	0	0.00	244
29	Edelman-Cagliari, Nicole	4	0	0.00	0	0	.000	0	0.00	0	0	0.00	1	0	0	.000	14	3.50	0	0.00	0	0.00	242
30	Stalzer, Lindsay	3	2	0.67	0	10	.200	0	0.00	0	0	0.00	0	0	0	.000	3	1.00	1	0.33	0	0.00	223
31	Hippe, Saskia	3	7	2.33	4	14	.210	0	0.00	1	0	0.00	0	1	0	1.000	3	1.00	0	0.00	0	0.00	193
32	Grote, Marin	2	3	1.50	0	7	.430	0	0.00	0	0	0.00	2	0	0	.000	0	0.00	0	0.00	1	0.50	190
33	Childress, Alisha	3	0	0.00	0	0	.000	1	0.33	0	0	0.00	0	0	0	.000	0	0.00	0	0.00	0	0.00	180
33	Hart, Danielle	0	0	0.00	0	0	.000	0	0.00	0	0	0.00	0	0	0	.000	0	0.00	0	0.00	0	0.00	180
33	Lukes, Katie	0	0	0.00	0	0	.000	0	0.00	0	0	0.00	0	0	0	.000	0	0.00	0	0.00	0	0.00	180
33	Schlegel, Maria	1	0	0.00	0	0	.000	0	0.00	0	0	0.00	0	0	0	.000	0	0.00	0	0.00	0	0.00	180
37	Fairs, Erin	3	0	0.00	4	8	-.500	0	0.00	0	0	0.00	1	23	1	.390	7	2.33	1	0.33	0	0.00	163
38	Blossom, Gabby	5	0	0.00	0	0	.000	13	2.60	0	0	0.00	0	0	0	.000	10	2.00	0	0.00	0	0.00	133
39	Bastianelli, Ali	6	10	1.67	5	34	.150	0	0.00	0	0	0.00	2	4	0	.250	1	0.17	3	0.50	2	0.33	131
40	Abbott, Symone	5	8	1.60	6	29	.070	0	0.00	0	2	0.40	2	5	0	.400	8	1.60	0	0.00	0	0.00	124
41	McClendon, Deja	3	3	1.00	3	9	.000	0	0.00	0	0	0.00	1	10	0	.600	6	2.00	0	0.00	0	0.00	102
42	Willis, Emma	4	3	0.75	1	12	.170	0	0.00	0	0	0.00	0	3	1	.330	1	0.25	0	0.00	1	0.25	89
43	Mohler, Blake	3	1	0.33	3	8	-.250	0	0.00	0	0	0.00	0	0	0	.000	2	0.67	2	0.67	0	0.00	86
44	Parker-Robinson, Nia	0	0	0.00	0	0	.000	0	0.00	0	0	0.00	0	0	0	.000	0	0.00	0	0.00	0	0.00	80

2023 ATHLETES UNLIMITED VOLLEYBALL CAPTAIN WEEK-BY-WEEK RESULTS

WEEK ONE: OCTOBER 6-9

TEAM DE LA CRUZ			TEAM VALENTIN-ANDERSON			TEAM NOOTSARA			TEAM EDMOND		
Captain: Bethania De La Cruz			Captain: Natalia Valentin-Anderson			Captain: Nootsara Tomkom			Captain: Leah Edmond		
Facilitator: Kayla Banwarth			Facilitator: Brandon Directo			Facilitator: Stephen Gbur			Facilitator: Dave Rubio		
Date	Opponent	Score	Date	Opponent	Score	Date	Opponent	Score	Date	Opponent	Score
10/6	Team Edmond	L, 77-73	10/6	Team Nootsara	L, 75-63	10/6	Team Valentin-Anderson	W, 75-63	10/6	Team De La Cruz	W, 77-73
10/8	Team Nootsara	L, 70-69	10/8	Team Edmond	L, 75-58	10/8	Team De La Cruz	W, 70-69	10/8	Team Valentin-Anderson	W, 75-58
10/9	Team Valentin-Anderson	W, 74-72 (GS)	10/9	Team De La Cruz	L, 74-72 (GS)	10/9	Team Edmond	L, 75-44	10/9	Team Nootsara	W, 75-44

WEEK TWO: OCTOBER 13-16

TEAM EDMOND			TEAM LINNEHAN			TEAM HENTZ			TEAM HILLEY		
Captain: Leah Edmond			Captain: Alli Linnehan			Captain: Morgan Hentz			Captain: Sydney Hilley		
Facilitator: Brandon Directo			Facilitator: Stephen Gbur			Facilitator: Dave Rubio			Facilitator: Kayla Banwarth		
Date	Opponent	Score	Date	Opponent	Score	Date	Opponent	Score	Date	Opponent	Score
10/13	Team Hilley	L, 74-62	10/13	Team Hentz	L, 76-51	10/13	Team Linnehan	W, 76-51	10/13	Team Edmond	W, 74-62
10/15	Team Hentz	L, 73-64	10/15	Team Hilley	L, 75-53	10/15	Team Edmond	W, 73-64	10/15	Team Linnehan	W, 75-53
10/16	Team Linnehan	W, 69-63	10/16	Team Edmond	L, 69-63	10/16	Team Hilley	W, 78-55	10/16	Team Hentz	L, 78-55

WEEK THREE: OCTOBER 20-23

TEAM EDMOND			TEAM HENTZ			TEAM HILLEY			TEAM ROSENTHAL		
Captain: Leah Edmond			Captain: Morgan Hentz			Captain: Sydney Hilley			Captain: Jenna Rosenthal		
Facilitator: Stephen Gbur			Facilitator: Dave Rubio			Facilitator: Kayla Banwarth			Facilitator: Brandon Directo		
Date	Opponent	Score	Date	Opponent	Score	Date	Opponent	Score	Date	Opponent	Score
10/20	Team Rosenthal	W, 71-68	10/20	Team Hilley	W, 75-55	10/20	Team Hentz	L, 75-55	10/20	Team Edmond	L, 71-68
10/22	Team Hilley	W, 72-60	10/22	Team Rosenthal	W, 73-60	10/22	Team Edmond	L, 72-60	10/22	Team Hentz	L, 73-60
10/23	Team Hentz	L, 75-47	10/23	Team Edmond	W, 75-47	10/23	Team Rosenthal	W, 72-59	10/23	Team Hilley	L, 72-59

WEEK FOUR: OCTOBER 27-30

TEAM EDMOND			TEAM HENTZ			TEAM LINNEHAN			TEAM HILLEY		
Captain: Leah Edmond			Captain: Morgan Hentz			Captain: Alli Linnehan			Captain: Sydney Hilley		
Facilitator: Dave Rubio			Facilitator: Kayla Banwarth			Facilitator: Brandon Directo			Facilitator: Stephen Gbur		
Date	Opponent	Score	Date	Opponent	Score	Date	Opponent	Score	Date	Opponent	Score
10/27	Team Hilley	W, 73-71	10/27	Team Linnehan	L, 71-68	10/27	Team Hentz	W, 71-68	10/27	Team Edmond	L, 73-71
10/29	Team Linnehan	L, 75-64	10/29	Team Hilley	W, 79-68	10/29	Team Edmond	W, 75-64	10/29	Team Hentz	L, 79-68
10/30	Team Hentz	W, 70-63	10/30	Team Edmond	L, 70-63	10/30	Team Hilley	L, 71-66	10/30	Team Linnehan	W, 71-66

WEEK FIVE: NOVEMBER 3-6

TEAM EDMOND			TEAM LINNEHAN			TEAM HENTZ			TEAM NUNEVILLER		
Captain: Leah Eedmond			Captain: Alli Linnehan			Captain: Morgan Hentz			Captain: Brooke Nuneviller		
Facilitator: Kayla Banwarth			Facilitator: Brandon Directo			Facilitator: Stephen Gbur			Facilitator: Dave Rubio *		
Date	Opponent	Score	Date	Opponent	Score	Date	Opponent	Score	Date	Opponent	Score
11/3	Team Nuneviller	W, 61-60	11/3	Team Hentz	W, 81-72	11/3	Team Linnehan	L, 81-72	11/3	Team Edmond	L, 61-60
11/5	Team Hentz	W, 69-57	11/5	Team Nuneviller	L, 75-63	11/5	Team Edmond	L, 69-57	11/5	Team Linnehan	W, 75-63
11/6	Team Linnehan		11/6	Team Edmond		11/6	Team Nuneviller		11/6	Team Hentz	

* - Dave Rubio missed the November 3 match; Cassidy Lichtman served as the facilitator for Team Nuneviller

2023 ATHLETES UNLIMITED LEADERBOARD POINTS BY DATE

Player	10/6	10/8	10/9	10/13	10/15	10/16	10/20	10/22	10/23	10/27	10/29	10/30	11/3	11/5	11/6	High	Low
Abbott, Symone	40	80	100	0	-4	40	180	148	180	100	40	140	66	58		180	-4
Adekunle, Anota	56	80	100													100	56
Bastianelli, Ali	211	253	11	61	9	10	307	240	226	188	83	147	55	76		307	9
Benson, Amanda	48	71	129	200	273	22	223	214	57	146	52	169	99	204		273	22
Blossom, Gabby	45	80	100	40	32	140	0	40	140	47	180	68	65	68		180	0
Brown, Kaz	24	41	214	34	69	112	186	212	-3	177	88	334	171	266		334	-3
Bruns Tegenrot, Taylor	140	172	180	66	22	172	185	159	189	142	153	80	144	100		189	22
Caffey, Kayla	62	158	187	140	309	0	35	73	101	80	12	100	63	185		309	0
Chaussee, Claire	393	160	25	425	352	42	217	101	102	347	97	196	119	224		425	25
Childress, Alisha	129	174	182	92	91	269	152	88	119	77	336	63	140	40		336	40
Collazo, Génesis	189	274	282	96	102	118	296	211	236	195	112	175	215	214		296	96
Cruz, Aury	239	195	5	276	295	63	122	130	164	66	77	100	166	111		295	5
De La Cruz, Bethania	241	182	306	430	324	391	40	40	40	40	336	171	86	300		430	40
Dixon, Tori	28	41	173	214	278	47	278	269	25	127	237	59	224	94		278	25
Edelman-Cagliari, Nicole	180	107	30	140	180	0	40	60	40	80	5	199	40	202		202	0
Edmond, Leah	226	390	412	189	179	341	300	390	187	255	200	337	251	275		412	179
Fairs, Erin	40	80	103	70	27	106	140	140	0	222	259	111	121	42		259	0
Fanning, Shelly	10	0	80	117	91	204	66	40	40	140	145	106	169	173		204	0
Gonzaga, Sassá	180	100	29	140	180	14	40	102	213	50	180	40	140	140		213	14
Grote, Marin	180	100	6	40	40	140	140	140	0	40	180	90	50	140		180	0
Hart, Danielle	212	340	265	202	180	0	49	79	140	100	40	140	140	40		340	0
Hentz, Morgan	268	262	351	305	262	268	235	211	255	112	277	113	146	128		351	112
Hilley, Sydney	245	326	309	235	282	69	80	109	340	228	88	175	159	232		340	69
Hippe, Saskia	65	88	168	266	176	361	344	211	-38	71	201	58	53	140		361	-38
Johnson, Willow	155	275	160	41	32	148	18	51	291	291	339	78	285	81		339	18
Linnehan, Alli	391	286	246	-14	25	156	345	299	409	395	315	300	393	116		409	-14
Lukes, Katie	21	-25	90	166	183	145	-37	54	143	141	140	62	140	40		183	-37
McCage, Molly	255	122	-3	98	144	332	254	290	400	221	174	152	262	146		400	-3
McClendon, Deja	140	180	180	40	40	249	195	149	45	80	7	100	52	50		249	7
Mohler, Blake				0	-12	40	180	140	180	98	189	40	40	46		189	-12
Nuneviller, Brooke	125	35	204	284	417	240	90	192	301	217	417	121	182	369		417	35
Parker-Robinson, Nia	0	3	80	40	40	146	40	33	40	140	140	80	40	40		146	0
Pressley, Yossiana	225	156	-22	294	278	39	0	228	2	191	58	289	169	136		294	-22
Reed, Nia	313	129	-9	140	180	-12	95	68	65	80	0	100	140	140		313	-12
Rosenthal, Jenna	204	223	248	254	211	283	88	45	128	128	67	167	100	238		283	45
Santos, Ray	0	0	92	180	140	185	140	140	0	100	32	132	140	140		185	0
Schlegel, Maria	22	-4	80	14	0	110	0	40	140	100	39	140	40	140		140	-4
Stalzer, Lindsay	0	180	180	180	140	180	28	40	18	150	180	53	40	183		183	0
Tomkom, Nootsara	322	210	47	46	37	62	269	210	271	212	262	158	225	156		322	37
Valentin-Anderson, Natalia	140	99	161	322	261	277	214	255	76	177	110	236	305	340		340	76
Vander Weide, Lindsey	140	190	151	180	140	180	348	194	312	261	75	188	249	273		348	75
Vélez Agosto, Nomaris	75	176	163	86	126	213	122	130	119	259	224	149	205	99		259	75
Watson, Karis	64	58	152	180	140	180	0	54	246	128	179	80	136	140		246	0
White, Kendall	227	194	79	75	84	99	69	123	186	148	109	205	221	214		227	69
Willis, Emma	140	180	180	222	184	174	43	57	213	101	63	154	66	23		222	23

2023 ATHLETES UNLIMITED LEADERBOARD POSITION BY DATE

Player	10/6	10/8	10/9	10/13	10/15	10/16	10/20	10/22	10/23	10/27	10/29	10/30	11/3	11/5	11/6	High	Low
Abbott, Symone	35	35	39	41	42	42	41	40	37	37	39	39	39	40		35	42
Adekunle, Anota	32	32	36	40	41	43	44	45	45	45	45	45	45	45		32	45
Bastianelli, Ali	14	9	18	26	33	35	27	24	19	17	21	20	24	26		9	35
Benson, Amanda	33	37	34	33	20	28	22	20	22	24	25	25	26	25		20	37
Blossom, Gabby	34	33	37	38	40	39	40	41	41	42	42	42	41	41		33	42
Brown, Kaz	38	38	32	35	36	38	34	30	33	31	33	27	27	23		23	38
Bruns Tegenrot, Taylor	21	21	15	22	32	27	24	23	20	22	22	24	23	24		15	32
Caffey, Kayla	31	28	22	23	15	20	25	26	29	29	32	33	33	32		15	33
Chaussee, Claire	2	4	11	6	5	6	4	6	9	5	8	7	10	10		2	11
Childress, Alisha	26	22	16	19	22	18	17	21	21	25	17	18	18	21		16	26
Collazo, Génesis	16	8	6	9	11	14	11	10	11	10	10	11	11	11		6	16
Cruz, Aury	9	13	19	12	9	13	15	16	14	16	19	22	20	20		9	22
De La Cruz, Bethania	6	11	7	3	1	1	3	3	5	9	5	5	8	6		1	11
Dixon, Tori	37	39	35	30	19	24	18	14	18	19	16	17	17	17		14	39
Edelman-Cagliari, Nicole	17	23	29	29	26	32	35	36	36	38	41	38	40	37		17	41
Edmond, Leah	10	2	1	1	4	2	1	1	1	1	1	1	1	1		1	10
Fairs, Erin	36	36	38	36	38	40	37	37	39	35	31	31	30	33		30	40
Fanning, Shelly	41	41	42	42	39	37	38	38	40	40	38	40	37	36		36	42
Gonzaga, Sassá	18	24	30	32	27	31	33	35	30	33	30	32	31	30		18	35
Grote, Marin	19	25	31	34	37	36	36	34	35	39	37	36	38	38		19	39
Hart, Danielle	11	5	5	5	6	9	13	15	16	15	20	19	21	22		5	22
Hentz, Morgan	5	6	3	2	2	3	2	2	2	3	3	3	3	4		2	6
Hilley, Sydney	7	3	4	4	3	4	5	8	4	4	6	6	6	7		3	8
Hippe, Saskia	29	31	28	18	17	10	8	7	13	13	13	14	16	15		7	31
Johnson, Willow	20	10	9	16	23	23	29	31	26	21	15	15	13	14		9	31
Linnehan, Alli	1	1	2	8	12	11	9	5	3	3	2	2	2	2		1	12
Lukes, Katie	40	44	43	39	34	34	39	39	38	36	35	37	36	39		34	44
McCage, Molly	8	17	24	28	29	17	14	13	6	6	7	8	5	9		5	29
McClendon, Deja	22	19	12	24	31	22	19	22	23	26	28	29	29	31		12	31
Mohler, Blake				45	45	45	43	42	42	41	40	41	42	42		40	45
Nuneviller, Brooke	27	30	25	15	8	7	10	9	7	7	4	4	4	3		3	30
Parker-Robinson, Nia	42	42	44	43	43	41	42	43	43	43	43	43	43	43		41	44
Pressley, Yossiana	13	16	27	14	13	16	21	18	25	23	24	21	19	18		13	27
Reed, Nia	4	12	20	21	18	29	28	29	31	32	34	34	34	34		4	34
Rosenthal, Jenna	15	14	8	7	7	5	6	11	12	12	14	13	14	13		5	15
Santos, Ray	42	43	41	37	35	33	32	32	34	34	36	35	35	35		32	43
Schlegel, Maria	39	40	40	44	44	44	45	44	44	44	44	44	44	44		39	45
Stalzer, Lindsay	42	29	26	25	21	19	26	28	32	30	29	30	32	29		19	42
Tomkom, Nootsara	3	7	10	17	24	30	20	17	15	14	12	12	12	12		3	30
Valentin-Anderson, Natalia	24	27	23	11	10	8	7	4	10	11	11	10	7	5		4	27
Vander Weide, Lindsey	25	18	17	13	16	15	12	12	8	8	9	9	9	8		8	25
Vélez Agosto, Nomaris	28	26	21	27	28	21	23	25	24	20	18	16	15	16		15	28
Watson, Karis	30	34	33	31	30	25	31	33	28	28	27	28	28	28		25	34
White, Kendall	12	15	14	20	25	26	30	27	27	27	26	26	22	19		12	30
Willis, Emma	23	20	13	10	14	12	16	19	17	18	23	23	25	27		10	27

2023 ATHLETES UNLIMITED VOLLEYBALL PLAYER MATCH WIN-LOSS RESULTS

No.	Player	Week One			Week Two			Week Three			Week Four			Week Five			2023			2022		2021		Career	
		10/6	10/8	10/9	10/13	10/15	10/16	10/20	10/22	10/23	10/27	10/29	10/30	11/3	11/5	11/6	W	L	Points	W	L	W	L	W	L
00	Amanda Benson	L	L	L	W	W	L	W	W	L	L	L	W	L	W	6	8	360	6	9			12	17	
1	Kendall White	W	W	L	L	L	L	L	L	W	W	L	W	W	W	7	7	420					7	7	
2	Brooke Nuneviller	L	L	L	W	W	W	L	L	W	L	W	L	L	W	6	8	360					6	8	
3	Danielle Hart	W	W	W	W	W	L	L	L	W	W	L	W	W	L	9	5	540					9	5	
4	Ray Santos	L	L	L	W	W	W	W	W	L	W	L	W	W	W	9	5	540	6	9			15	14	
5	Molly McCage	W	W	L	L	L	W	W	W	W	W	L	W	L		9	5	540	6	9	5	10	20	24	
6	Alisha Childress	L	L	W	L	L	W	L	L	L	L	W	L	W	L	4	10	240	6	9			10	19	
7	Erin Fairs	L	L	W	L	L	L	W	W	L	W	W	L	W	L	6	8	360	6	9	5	10	17	27	
8	Sydney Hilley	W	W	W	W	W	L	L	L	L	W	L	L	W	L	8	6	480					8	6	
9	Sassa Gonzaga	W	W	L	W	W	L	L	L	W	L	W	L	W	W	8	6	480					8	6	
10	Kaz Brown	L	L	L	L	L	L	W	W	L	W	L	W	W	W	6	8	360					6	8	
11	Claire Chaussee	W	W	L	W	W	L	L	L	L	L	W	L	L		5	9	300					5	9	
12	Leah Edmond	W	W	W	L	L	W	W	W	L	W	L	W	W	W	10	4	600	10	5	4	8	24	17	
13	Nootsara Tomkom	W	W	L	L	L	L	W	W	W	W	W	L	W	L	8	6	480	9	6			17	12	
14	Nicole Edelman-Cagliari	W	W	L	W	W	L	L	L	L	L	L	W	L	W	6	8	360					6	8	
15	Katie Lukes	L	L	L	L	L	W	L	L	W	W	W	L	W	L	5	9	300					5	9	
16	Jenna Rosenthal	W	W	W	W	W	W	L	L	L	L	L	W	L	W	8	6	480	9	6			17	12	
17	Taylor Bruns Tegenrot	W	W	W	L	L	L	W	W	W	W	L	L	L	L	8	6	480	8	7	5	10	21	23	
18	Deja McClendon	W	W	W	L	L	W	W	W	L	L	L	W	L	L	7	7	420	4	11	11	4	22	22	
19	Anota Adekunle	L	L	W												1	2	60					1	2	
20	Blake Mohler				L	L	L	W	W	W	L	W	L	L	L	4	7	240					4	7	
21	Lindsey Vander Weide	L	L	W	W	W	W	W	W	W	W	L	W	W	W	11	3	660					11	3	
22	Yossiana Pressley	W	W	L	W	W	L	L	W	L	L	L	W	L	L	6	8	360					6	8	
23	Tori Dixon	L	L	L	W	W	L	W	W	L	L	W	L	W	L	6	8	360					6	8	
24	Aury Cruz	W	W	L	W	W	L	L	L	L	L	L	W	W	L	6	8	360	8	7	8	7	22	22	
26	Maria Schlegel	L	L	L	L	L	L	L	L	W	W	L	W	L	W	4	10	240					4	10	
27	Natalia Valentin-Anderson	L	L	L	W	W	W	W	W	L	W	L	W	W	W	9	5	540	10	5			19	10	
28	Kayla Caffey	L	L	W	W	W	L	L	L	L	L	L	W	L	W	5	9	300					5	9	
29	Lindsay Stalzer	L	W	W	W	W	W	L	L	L	L	W	L	L	W	7	7	420	7	8	10	5	24	20	
31	Gabby Blossom	L	L	W	L	L	W	L	L	W	L	W	L	L	L	4	10	240					4	10	
32	Nia Parker-Robinson	L	L	L	L	L	W	L	L	L	L	W	W	L	L	3	11	180					3	11	
33	Nia Reed	W	W	L	W	W	L	L	L	L	L	L	W	W	W	7	7	420					7	7	
37	Alli Linnehan	W	W	W	L	L	L	W	W	W	W	L	W	L		9	5	540					9	5	
40	Nomaris Vález Agosto	L	L	W	L	L	W	L	L	L	W	W	L	W	L	5	9	300	9	6	9	6	23	21	
42	Symone Abbott	L	L	W	L	L	L	W	W	W	W	L	W	L	L	6	8	360			3	12	9	20	
44	Willow Johnson	L	L	W	L	L	L	L	L	W	W	W	L	W	L	5	9	300			3	6	8	15	
46	Morgan Hentz	W	W	W	W	W	W	W	W	W	L	W	L	L	L	10	4	600	6	9			16	13	
48	Karis Watson	L	L	W	W	W	W	L	L	W	W	W	L	W	W	9	5	540					9	5	
54	Emma Willis	W	W	W	W	W	W	L	L	W	L	L	W	L	L	8	6	480	11	4			19	10	
55	Ali Bastianelli	W	W	L	L	L	L	W	W	W	W	L	W	L	L	7	7	420	7	8	6	9	20	24	
77	Genesis Collazo	W	W	W	L	L	W	W	W	W	W	L	W	W	W	11	3	660					11	3	
81	Bethania De La Cruz	L	L	W	W	W	W				L	W	L	L	W	6	5	360	10	5	10	5	26	15	
88	Marin Grote	W	W	L	L	L	W	W	W	L	L	W	L	L	W	7	7	420					7	7	
91	Saskia Hippe	L	L	L	W	W	W	W	W	L	L	W	L	L	W	7	7	420					7	7	
97	Shelly Fanning	L	L	L	L	L	W	L	L	L	L	W	W	L	W	5	9	300					5	9	

2023 ATHLETES UNLIMITED VOLLEYBALL DRAFT RESULTS (BY TEAM ORDER)

WEEK ONE: OCTOBER 6-9

ROUND	TEAM DE LA CRUZ (GOLD)	TEAM VALENTIN-ANDERSON (ORANGE)	TEAM NOOTSARA (BLUE)	TEAM EDMOND (PURPLE)
Captain	Bethania De La Cruz (OH)	Natalia Valentin-Anderson (S)	Nootsara Tomkom (S)	Leah Edmond (OH)
1	Alisha Childress (S)	Brooke Nuneviller (OH)	Yossiana Pressley (OH)	Alli Linnehan (OH)
2	Willow Johnson (OPP)	Saskia Hippe (OPP)	Molly McCage (MB)	Danielle Hart (MB)
3	Anota Adekunle (MB)	Shelly Fanning (MB)	Claire Chaussee (OH)	Morgan Hentz (L)
4	Nomaris Vélez Agosto (L)	Katie Lukes (OH)	Ali Bastianelli (MB)	Sydney Hilley (S)
5	Lindsey Vander Weide (OH)	Tori Dixon (MB)	Kendall White (L)	Jenna Rosenthal (MB)
6	Karis Watson (MB)	Maria Schlegel (OH)	Nia Reed (OPP)	Génesis Collazo (OPP)
7	Gabby Blossom (S)	Kaz Brown (MB)	Aury Cruz (OH)	Taylor Bruns Tegenrot (S)
8	Erin Fairs (OH)	Nia Parker-Robinson (OH)	Nicole Edelman-Cagliari (S)	Deja McClendon (OH)
9	Kayla Caffey (MB)	Amanda Benson (L)	Sassá Gonzaga (OH)	Emma Willis (MB)
10	Symone Abbott (OPP)	Ray Santos (S)	Marin Grote (MB)	Lindsay Stalzer (OH)

WEEK TWO: OCTOBER 13-16

ROUND	TEAM EDMOND (GOLD)	TEAM LINNEHAN (ORANGE)	TEAM HENTZ (BLUE)	TEAM HILLEY (PURPLE)
Captain	Leah Edmond (OH)	Alli Linnehan (OH)	Morgan Hentz (L)	Sydney Hilley (S)
1	Alisha Childress (S)	Willow Johnson (OPP)	Bethania De La Cruz (OH)	Claire Chaussee (OH)
2	Molly McCage (MB)	Nootsara Tomkom (S)	Brooke Nuneviller (OH)	Yossiana Pressley (OH)
3	Génesis Collazo (OPP)	Ali Bastianelli (MB)	Jenna Rosenthal (MB)	Danielle Hart (MB)
4	Nomaris Vélez Agosto (L)	Kendall White (L)	Natalia Valentin-Anderson (S)	Aury Cruz (OH)
5	Shelly Fanning (MB)	Kaz Brown (MB)	Saskia Hippe (OPP)	Tori Dixon (MB)
6	Katie Lukes (OH)	Maria Schlegel (OH)	Emma Willis (MB)	Nia Reed (OPP)
7	Deja McClendon (OH)	Taylor Bruns Tegenrot (S)	Karis Watson (MB)	Sassá Gonzaga (OH)
8	Gabby Blossom (S)	Erin Fairs (OH)	Lindsey Vander Weide (OH)	Nicole Edelman-Cagliari (S)
9	Nia Parker-Robinson (OH)	Symone Abbott (OPP)	Lindsay Stalzer (OH)	Kayla Caffey (MB)
10	Marin Grote (MB)	-	Ray Santos (S)	Amanda Benson (L)

Note: Blake Mohler was added to the roster on October 11 and assigned to Team Linnehan

WEEK THREE: OCTOBER 20-23

ROUND	TEAM EDMOND (GOLD)	TEAM HENTZ (ORANGE)	TEAM HILLEY (BLUE)	TEAM ROSENTHAL (PURPLE)
Captain	Leah Edmond (OH)	Morgan Hentz (L)	Sydney Hilley (S)	Jenna Rosenthal (MB)
1	Natalia Valentin-Anderson (S)	Alli Linnehan (OH)	Brooke Nuneviller (OH)	Claire Chaussee (OH)
2	Saskia Hippe (OPP)	Molly McCage (MB)	Willow Johnson (OPP)	Alisha Childress (S)
3	Kaz Brown (MB)	Ali Bastianelli (MB)	Danielle Hart (MB)	Aury Cruz (OH)
4	Yossiana Pressley (OH)	Lindsey Vander Weide (OH)	Katie Lukes (OH)	Nomaris Vélez Agosto (L)
5	Tori Dixon (MB)	Nootsara Tomkom (S)	Emma Willis (MB)	Nia Reed (OPP)
6	Deja McClendon (OH)	Génesis Collazo (OPP)	Sassá Gonzaga (OH)	Lindsay Stalzer (OH)
7	Amanda Benson (L)	Taylor Bruns Tegenrot (S)	Karis Watson (MB)	Shelly Fanning (MB)
8	Erin Fairs (OH)	Symone Abbott (OPP)	Gabby Blossom (S)	Nia Parker-Robinson (OH)
9	Ray Santos (S)	Blake Mohler (MB)	Maria Schlegel (OH)	Kayla Caffey (MB)
10	Marin Grote (MB)	-	Kendall White (L)	Nicole Edelman-Cagliari (S)

Note: Bethania De La Cruz was not available for selection due to national team commitments at Pan American Games.

WEEK FOUR: OCTOBER 27-30

ROUND	TEAM EDMOND (GOLD)	TEAM HENTZ (ORANGE)	TEAM LINNEHAN (BLUE)	TEAM HILLEY (PURPLE)
Captain	Leah Edmond (OH)	Morgan Hentz (L)	Alli Linnehan (OH)	Sydney Hilley (S)
1	Natalia Valentin-Anderson (S)	Brooke Nuneviller (OH)	Molly McCage (MB)	Claire Chaussee (OH)
2	Lindsey Vander Weide (OH)	Bethania De La Cruz (OH)	Nootsara Tomkom (S)	Yossiana Pressley (OH)
3	Ali Bastianelli (MB)	Tori Dixon (MB)	Willow Johnson (OPP)	Jenna Rosenthal (MB)
4	Génesis Collazo (OPP)	Saskia Hippe (OPP)	Karis Watson (MB)	Aury Cruz (OH)
5	Kaz Brown (MB)	Blake Mohler (MB)	Katie Lukes (OH)	Emma Willis (MB)
6	Kendall White (L)	Alisha Childress (S)	Nomaris Vélez Agosto (L)	Kayla Caffey (MB)
7	Symone Abbott (OPP)	Sassá Gonzaga (OH)	Taylor Bruns Tegenrot (S)	Deja McClendon (OH)
8	Ray Santos (S)	Lindsay Stalzer (OH)	Shelly Fanning (MB)	Nia Reed (OPP)
9	Maria Schlegel (OH)	Marin Grote (MB)	Nia Parker-Robinson (OH)	Nicole Edelman-Cagliari (S)
10	Danielle Hart (MB)	Gabby Blossom (S)	Erin Fairs (OH)	Amanda Benson (L)

WEEK FIVE: NOVEMBER 3-6

ROUND	TEAM EDMOND (GOLD)	TEAM LINNEHAN (ORANGE)	TEAM HENTZ (BLUE)	TEAM NUNEVILLER (PURPLE)
Captain	Leah Edmond (OH)	Alli Linnehan (OH)	Morgan Hentz (L)	Brooke Nuneviller (OH)
1	Natalia Valentin-Anderson (S)	Molly McCage (MB)	Claire Chaussee (OH)	Bethania De La Cruz (OH)
2	Lindsey Vander Weide (OH)	Nootsara Tomkom (S)	Yossiana Pressley (OH)	Sydney Hilley (S)
3	Génesis Collazo (OPP)	Willow Johnson (OPP)	Ali Bastianelli (MB)	Jenna Rosenthal (MB)
4	Kaz Brown (MB)	Tori Dixon (MB)	Emma Willis (MB)	Kayla Caffey (MB)
5	Karis Watson (MB)	Nomaris Vélez Agosto (L)	Taylor Bruns Tegenrot (S)	Saskia Hippe (OPP)
6	Kendall White (L)	Erin Fairs (OH)	Symone Abbott (OPP)	Marin Grote (MB)
7	Sassa Gonzaga (OH)	Alisha Childress (S)	Deja McClendon (OH)	Nicole Edelman-Cagliari (S)
8	Shelly Fanning (MB)	Aury Cruz (OH)	Nia Parker-Robinson (OH)	Lindsay Stalzer (OH)
9	Ray Santos (S)	Katie Lukes (OH)	Blake Mohler (MB)	Maria Schlegel (OH)
10	Nia Reed (OPP)	Danielle Hart (MB)	Gabby Blossom (S)	Amanda Benson (L)

2023 ATHLETES UNLIMITED VOLLEYBALL DRAFT RESULTS (BY OVERALL ORDER)

DRAFT PICK	Week 1	Week 2	Week 3	Week 4	Week 5
Captain	Bethania De La Cruz (OH)	Leah Edmond (OH)	Leah Edmond (OH)	Leah Edmond (OH)	Leah Edmond (OH)
Captain	Natalia Valentin-Anderson (S)	Alli Linnehan (OH)	Morgan Hentz (L)	Morgan Hentz (L)	Alli Linnehan (OH)
Captain	Nootsara Tomkom (S)	Morgan Hentz (L)	Sydney Hilley (S)	Alli Linnehan (OH)	Morgan Hentz (L)
Captain	Leah Edmond (OH)	Sydney Hilley (S)	Jenna Rosenthal (MB)	Sydney Hilley (S)	Brooke Nuneviller (OH)
1	Alli Linnehan (OH)	Claire Chaussee (OH)	Claire Chaussee (OH)	Claire Chaussee (OH)	Bethania De La Cruz (OH)
2	Yossiana Pressley (OH)	Bethania De La Cruz (OH)	Brooke Nuneviller (OH)	Molly McCage (MB)	Claire Chaussee (OH)
3	Brooke Nuneviller (OH)	Willow Johnson (OPP)	Alli Linnehan (OH)	Brooke Nuneviller (OH)	Molly McCage (MB)
4	Alisha Childress (S)	Alisha Childress (S)	Natalia Valentin-Anderson (S)	Natalia Valentin-Anderson (S)	Natalia Valentin-Anderson (S)
5	Willow Johnson (OPP)	Molly McCage (MB)	Saskia Hippe (OPP)	Lindsey Vander Weide (OH)	Lindsey Vander Weide (OH)
6	Saskia Hippe (OPP)	Nootsara Tomkom (S)	Molly McCage (MB)	Bethania De La Cruz (OH)	Nootsara Tomkom (S)
7	Molly McCage (MB)	Brooke Nuneviller (OH)	Willow Johnson (OPP)	Nootsara Tomkom (S)	Yossiana Pressley (OH)
8	Danielle Hart (MB)	Yossiana Pressley (OH)	Alisha Childress (S)	Yossiana Pressley (OH)	Sydney Hilley (S)
9	Morgan Hentz (L)	Danielle Hart (MB)	Aury Cruz (OH)	Jenna Rosenthal (MB)	Jenna Rosenthal (MB)
10	Claire Chaussee (OH)	Jenna Rosenthal (MB)	Danielle Hart (MB)	Willow Johnson (OPP)	Ali Bastianelli (MB)
11	Shelly Fanning (MB)	Ali Bastianelli (MB)	Ali Bastianelli (MB)	Tori Dixon (MB)	Willow Johnson (OPP)
12	Anota Adekunle (MB)	Génesis Collazo (OPP)	Kaz Brown (MB)	Ali Bastianelli (MB)	Génesis Collazo (OPP)
13	Nomaris Vélez Agosto (L)	Nomaris Vélez Agosto (L)	Yossiana Pressley (OH)	Génesis Collazo (OPP)	Kaz Brown (MB)
14	Katie Lukes (OH)	Kendall White (L)	Lindsey Vander Weide (OH)	Saskia Hippe (OPP)	Tori Dixon (MB)
15	Ali Bastianelli (MB)	Natalia Valentin-Anderson (S)	Katie Lukes (OH)	Karis Watson (MB)	Emma Willis (MB)
16	Sydney Hilley (S)	Aury Cruz (OH)	Nomaris Vélez Agosto (L)	Aury Cruz (OH)	Kayla Caffey (MB)
17	Jenna Rosenthal (MB)	Tori Dixon (MB)	Nia Reed (OPP)	Emma Willis (MB)	Saskia Hippe (OPP)
18	Kendall White (L)	Saskia Hippe (OPP)	Emma Willis (MB)	Katie Lukes (OH)	Taylor Bruns Tegenrot (S)
19	Tori Dixon (MB)	Kaz Brown (MB)	Nootsara Tomkom (S)	Blake Mohler (MB)	Nomaris Vélez Agosto (L)
20	Lindsey Vander Weide (OH)	Shelly Fanning (MB)	Tori Dixon (MB)	Kaz Brown (MB)	Karis Watson (MB)
21	Karis Watson (MB)	Katie Lukes (OH)	Deja McClendon (OH)	Kendall White (L)	Kendall White (L)
22	Maria Schlegel (OH)	Maria Schlegel (OH)	Génesis Collazo (OPP)	Alisha Childress (S)	Erin Fairs (OH)
23	Nia Reed (OPP)	Emma Willis (MB)	Sassá Gonzaga (OH)	Nomaris Vélez Agosto (L)	Symone Abbott (OPP)
24	Génesis Collazo (OPP)	Nia Reed (OPP)	Lindsay Stalzer (OH)	Kayla Caffey (MB)	Marin Grote (MB)
25	Taylor Bruns Tegenrot (S)	Sassá Gonzaga (OH)	Shelly Fanning (MB)	Deja McClendon (OH)	Nicole Edelman-Cagliari (S)
26	Aury Cruz (OH)	Karis Watson (MB)	Karis Watson (MB)	Taylor Bruns Tegenrot (S)	Deja McClendon (OH)
27	Kaz Brown (MB)	Taylor Bruns Tegenrot (S)	Taylor Bruns Tegenrot (S)	Sassá Gonzaga (OH)	Alisha Childress (S)
28	Gabby Blossom (S)	Deja McClendon (OH)	Amanda Benson (L)	Symone Abbott (OPP)	Sassa Gonzaga (OH)
29	Erin Fairs (OH)	Gabby Blossom (S)	Erin Fairs (OH)	Ray Santos (S)	Shelly Fanning (MB)
30	Nia Parker-Robinson (OH)	Erin Fairs (OH)	Symone Abbott (OPP)	Lindsay Stalzer (OH)	Aury Cruz (OH)
31	Nicole Edelman-Cagliari (S)	Lindsey Vander Weide (OH)	Gabby Blossom (S)	Shelly Fanning (MB)	Nia Parker-Robinson (OH)
32	Deja McClendon (OH)	Nicole Edelman-Cagliari (S)	Nia Parker-Robinson (OH)	Nia Reed (OPP)	Lindsay Stalzer (OH)
33	Emma Willis (MB)	Kayla Caffey (MB)	Kayla Caffey (MB)	Nicole Edelman-Cagliari (S)	Maria Schlegel (OH)
34	Sassá Gonzaga (OH)	Lindsay Stalzer (OH)	Maria Schlegel (OH)	Nia Parker-Robinson (OH)	Blake Mohler (MB)
35	Amanda Benson (L)	Symone Abbott (OPP)	Blake Mohler (MB)	Marin Grote (MB)	Katie Lukes (OH)
36	Kayla Caffey (MB)	Nia Parker-Robinson (OH)	Ray Santos (S)	Maria Schlegel (OH)	Ray Santos (S)
37	Symone Abbott (OPP)	Marin Grote (MB)	Marin Grote (MB)	Danielle Hart (MB)	Nia Reed (OPP)
38	Ray Santos (S)	Ray Santos (S)	Kendall White (L)	Gabby Blossom (S)	Danielle Hart (MB)
39	Marin Grote (MB)	Amanda Benson (L)	Nicole Edelman-Cagliari (S)	Erin Fairs (OH)	Gabby Blossom (S)
40	Lindsay Stalzer (OH)	-	-	Amanda Benson (L)	Amanda Benson (L)

Note: Blake Mohler was added to the roster on October 11 and assigned to Team Linnehan for Week Two

2023 ATHLETES UNLIMITED VOLLEYBALL HEADSHOT ROSTER (NUMERICAL - OCTOBER 15)



00 Amanda
BENSON



1 Kendall
WHITE



2 Brooke
NUNEVILLER



3 Danielle
HART



4 Ray
SANTOS



5 Molly
McCAGE



6 Alisha
CHILDRESS



7 Erin
FAIRST



8 Sydney
HILLEY



9 Sassa
GONZAGA



10 Kaz
BROWN



11 Claire
CHAUSSEE



12 Leah
EDMOND



13 Nootsara
TOMKOM



14 Nicole
EDELMAN-CAGLIARI



15 Katie
LUKES



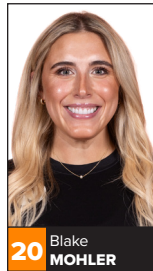
16 Jenna
ROSENTHAL



17 Taylor
BRUNS TEGENROT



18 Deja
McCLELLAND



20 Blake
MOHLER



21 Lindsey
VANDER WEIDE



22 Yossiana
PRESSLEY



23 Tori
DIXON



24 Aury
CRUZ



26 Maria
SCHLEGEL



27 Natalia
VALENTIN-ANDERSON



28 Kayla
CAFFEY



29 Lindsay
STALZER



31 Gabby
BLOSSOM



32 Nia
PARKER-ROBINSON



33 Nia
REED



37 Alli
LINNEHAN



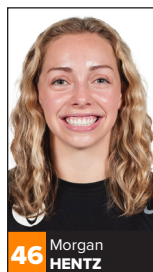
40 Nomaris
VÉLEZ AGOSTO



42 Symone
ABBOTT



44 Willow
JOHNSON



46 Morgan
HENTZ



48 Karis
WATSON



54 Emma
WILLIS



55 Ali
BASTIANELLI



77 Genesis
COLLAZO



81 Bethania
DE LA CRUZ



88 Marin
GROTE



91 Saskia
HIPPE



97 Shelly
FANNING



Kayla
BANWARTH



Brandon
DIRECTO



Stephen
GBUR



Dave
RUBIO