

GAME NOTES

2023 VOLLEYBALL • MATCH DAY #13 • NOVEMBER 3, 2023

Team Hentz vs. Team Linnehan • 4 p.m. Arizona Time • ESPN+
Team Edmond vs. Team Nuneviller • 6:30 p.m. Arizona Time • ESPN+



AUProSports.com • Twitter: @auprosports • Instagram: @AUProVolleyball • Facebook: Athletes Unlimited

2023 LEADERBOARD

POS.	+/-	PLAYER	TOTAL
1	0	Leah Edmond	3,406
2	1	Alli Linnehan	3,141
3	-1	Morgan Hentz	2,919
4	3	Brooke Nuneviller	2,643
5	0	Bethania De La Cruz	2,541
6	-2	Sydney Hilley	2,486
7	2	Claire Chaussee	2,457
8	-2	Molly McCage	2,439
9	-1	Lindsey Vander Weide	2,359
10	0	Natalia Valentin-Anderson	2,328
11	0	Génesis Collazo	2,286
12	3	Nootsara Tomkom	2,106
13	-1	Jenna Rosenthal	2,046
14	-1	Saskia Hippe	1,971
15	11	Willow Johnson	1,879
16	8	Nomaris Vélez Agosto	1,842
17	1	Tori Dixon	1,776
18	3	Alisha Childress	1,772
19	-3	Danielle Hart	1,747
20	-1	Ali Bastianelli	1,746
21	4	Yossiana Pressley	1,738
22	-8	Aury Cruz	1,732
23	-6	Emma Willis	1,711
24	-4	Taylor Bruns Tegenrot	1,672
25	-3	Amanda Benson	1,604
26	1	Kendall White	1,598
27	6	Kaz Brown	1,488
28	0	Karis Watson	1,461
29	-6	Deja McClendon	1,405
30	2	Lindsay Stalzer	1,329
31	8	Erin Fairs	1,310
32	-2	Sassá Gonzaga	1,268
33	-4	Kayla Caffey	1,257
34	-3	Nia Reed	1,149
35	-1	Ray Santos	1,141
36	-1	Marin Grote	1,096
37	1	Katie Lukes	1,083
38	-2	Nicole Edelman-Cagliari	1,061
39	-2	Symone Abbott	1,044
40	0	Shelly Fanning	1,039
41	1	Blake Mohler	935
42	-1	Gabby Blossom	912
43	0	Nia Parker-Robinson	782
44	0	Maria Schlegel	681
45	0	Anota Adekunle	236

ASPIRATION ACES

126

Aspiration is committed to planting 10 trees for every service ace recorded during the 2023 Athletes Unlimited Volleyball season. There were **213 aces** during the 2022 campaign.

Aspiration ACES

VOLLEYBALL ATHLETES UNLIMITED

START TO FINISH: Outside hitter **Leah Edmond** serves as a captain for the fifth straight week as she leads Team Edmond into the final segment of the season ... Edmond, who has compiled an 8-4 record over the first four weeks of the season, joins outside hitter **Bethania De La Cruz** as the only players in Athletes Unlimited Volleyball history to serve as a captain during an entire season.

Edmond joins De La Cruz, guard **Odyssey Sims** (basketball), attacker **Sam Apuzzo** (lacrosse) and **Taylor Moreno** (lacrosse) as the only five players in all Athletes Unlimited sports to serve as a captain over an entire season ... Apuzzo has been a captain in every week over the last two Athletes Unlimited Lacrosse seasons.

Sims captained a team during the entire 2023 basketball season, while Moreno piloted a team in all four weeks of the 2023 lacrosse campaign after being a captain during the last three weeks of the 2022 season.

Edmond will be a captain for the seventh time in her Athletes Unlimited Volleyball career, which ranks second behind De La Cruz's 10 weeks as a captain.

CAPTAIN'S CHAIR: Outside hitter **Brooke Nuneviller** closed Week Four holding fourth place on the leaderboard, making her the 23rd different player in Athletes Unlimited Volleyball history to earn the honor of being a team captain ... Nuneviller also becomes the ninth player this year to lead a team.

Ten different players led a team during the inaugural 2021 campaign, while nine players received the distinction of being a captain last season ... In addition, five players have been a team captain in multiple seasons ... Outside hitter **Bethania De La Cruz** is the only player to serve as a captain during all three seasons.

STEADY AS SHE GOES: Outside hitter **Leah Edmond**, setter **Sydney Hilley** and libero **Morgan Hentz** stand as the only three players in the league this year to be in the top 10 of the leaderboard after all 12 match days ... Edmond has held the league's top spot following 8-of-12 match days, including the last six in a row ... Hentz, meanwhile, has been ranked as high as second place on the league's ladder in six of the last nine days while not falling below the No. 6 position at any time in the first four weeks ... Hilley has ranked between third and eighth places during the season.

#WINNING: Libero **Morgan Hentz** has earned a league-high 1,760 win points in 12 matches this season after winning one of three sets in Team Hentz's setback to Team Edmond on Monday night ... Hentz, four-time captain, has a 7-2 record entering the Week Five opener while her 29 set victories are the most in the league ... Hentz is just 120 win points away from matching the league single-season record, which is held by middle blocker **Ronika Stone** ... Stone totaled 1,880 win points last season, including 12 match victories and 29 set wins.

Hentz, who is 10-2 overall in matches this season, needs just two set wins to eclipse the league single-season mark of 30 victories set during the inaugural 2021 season by opposite **Erica Wilson** and middle blocker **Molly Lohman**.

Hentz has 52 set wins in her career, which ranks 10th in league history ... Her .642 career set win percentage is the best in league history among players with more than 45 sets.

FRIDAY NIGHT LIGHTS: Outside hitter **Claire Chaussee** has averaged 345.5 leaderboard points in her four Friday night appearances this season, including a season-high 425 points against Team Edmond to open Week Two ... Chaussee has fashioned a .330 hitting percentage with 86 kills in four Friday night contests while averaging 9.5 digs per outing ... She has also earned four of her Match MVP awards, which includes a trio of MVP 1 honors.

THE TERMINATOR: Outside hitter **Leah Edmond** stands as the only player in the league to record at least 10 kills in all 12 matches this season after finishing Week Four with 14 kills against Team Hentz on Monday night ... In addition, the former Kentucky star has a streak of 17 consecutive double-digit kill efforts dating back to last season.

Edmond leads the league with 183 kills through 12 matches this season, which are the most in her three-year Athletes Unlimited Volleyball career ... She enters Week Five needing just 22 kills to become the second player in league history to accumulate 500 career kills, joining outside hitter **Bethania De La Cruz** on the exclusive list.

STRAIGHT FIRE: Outside hitter **Alli Linnehan** has surged up the leaderboard over the last two weeks and begins Week Five holding second place in the league standings ... Linnehan, who closed Week Two in 11th place, has averaged 348.3 leaderboard points in her last six matches after being limited to just 155 points over three matches in Week Two ... She has also tallied 300 or more points in five of the six outings, including the last four in a row.

Linnehan, who is 5-1 over her last six matches, has 10 or more kills in every match during the last two weeks with just nine attack errors for a .332 hitting percentage ... She has also earned Match MVP honors in each of the last five matches.

HODGE PODGE: Outside hitter **Aury Cruz** became the first player in league history to earn 70 career set wins after earning one set against Team Linnehan on Monday night ... Team Hilley became the ninth team in league history to win a match despite losing two sets, including the third instance this season, with its victory over Team Linnehan on Monday ... Middle blocker **Molly McCage** saw an end to her six-match win streak after Team Linnehan fell to Team Hilley on Monday night ... Outside hitter **Claire Chaussee** and opposite **Nia Reed** each had their six-match losing streaks snapped with Team Hilley's victory on Monday.

TEAM EDMOND (0-0)

Captain Leah Edmond
2023 Record as Captain 8-4
Career Record as Captain 10-8
Facilitator Kayla Banwarth

Nov. 3 vs. Team Nuneviller 6:30 p.m. AZT
Nov. 5 vs. Team Hentz 7:30 p.m. AZT
Nov. 6 vs. Team Linnehan 7:30 p.m. AZT

TEAM LINNEHAN (0-0)

Captain Alli Linnehan
2023 Record as Captain 2-4
Career Record as Captain 2-4
Facilitator Brandon Directo

Nov. 3 vs. Team Hentz 4 p.m. AZT
Nov. 5 vs. Team Nuneviller 5 p.m. AZT
Nov. 6 vs. Team Edmond 7:30 p.m. AZT

TEAM HENTZ (0-0)

Captain Morgan Hentz
2023 Record as Captain 7-2
Career Record as Captain 7-2
Facilitator Stephen Gbur

Nov. 3 vs. Team Linnehan 4 p.m. AZT
Nov. 5 vs. Team Edmond 7:30 p.m. AZT
Nov. 6 vs. Team Nuneviller 5 p.m. AZT

TEAM NUNEVILLER (0-0)

Captain Brooke Nuneviller
2023 Record as Captain 0-0
Career Record as Captain 0-0
Facilitator Dave Rubio

Nov. 3 vs. Team Edmond 7:30 p.m. AZT
Nov. 5 vs. Team Linnehan 5 p.m. AZT
Nov. 6 vs. Team Hentz 5 p.m. AZT

RECORD BY JERSEY COLOR

Week	One	Two	Three	Four	Five
Gold	1-2	1-2	2-1	2-1	-
Orange	0-3	0-3	3-0	1-2	-
Blue	2-1	3-0	1-2	2-1	-
Purple	3-0	2-1	0-3	1-2	-

2023 STATISTICAL LEADERS

Kills	Leah Edmond (183)
Attack Attempts	Claire Chaussee (506)
Hitting Percentage*	Molly McCage (.418)
Assists	Sydney Hilley (432)
Service Aces	Bethania De La Cruz (12)
Reception Attempts	Leah Edmond (300)
Digs	Morgan Hentz (174)
Solo Blocks	Kaz Brown (28)
Block Assists	Ali Bastianelli (27)
Leaderboard Points	Leah Edmond (3,406)
Win Points	Morgan Hentz (1,760)
Stat Points	Leah Edmond (1,826)
MVP Points	Leah Edmond (300)

* - Minimum 120 attempts

VOLLEYBALL MEDIA CENTER PAGE



WEEKLY SCHEDULE AND FAN INFORMATION

Date	Match	Time/Score	Broadcast	Ticket Promotion	Giveaway	Post-Match Activities
November 3	Team Hentz (Blue) vs. Team Linnehan (Orange)	4 p.m. AZT	ESPN+	-	Topps Cards (250)	Autographs
	Team Edmond (Gold) vs. Team Nuneviller (Purple)	6:30 p.m. AZT	ESPN+	-	Topps Cards (250)	Autographs; Serve on the Court
November 5	Team Nuneviller (Purple) vs. Team Linnehan (Orange)	5 p.m. AZT	ESPN+	-	Phone Grip Holders (250)	Autographs
	Team Hentz (Blue) vs. Team Edmond (Gold)	7:30 p.m. AZT	ESPNU	-	Phone Grip Holders (250)	Autographs; Pepper on the Court
November 6	Team Nuneviller (Purple) vs. Team Hentz (Blue)	5 p.m. AZT	ESPN+	\$5 Kids Tickets	Replica Medals (250)	Autographs
	Team Linnehan (Orange) vs. Team Edmond (Gold)	7:30 p.m. AZT	ESPNU	\$5 Kids Tickets	Replica Medals (250)	Autographs

Designated home team listed second on schedule • All matches are played at Legacy Park (Mesa, Ariz.) • Dates, times and broadcast designations are subject to change

WHO WE ARE

Athletes Unlimited is a new model of professional sports where athletes are decision makers and individual players are champions of team sports. We literally change the game with faster play and fluid teams, delivering next-level competition and engagement in which every moment counts. Athletes Unlimited began in 2020 with Women's Softball and followed with Women's Volleyball (2021), Women's Lacrosse (2021), Women's Basketball (2022) and AUX Softball (2022). Athletes Unlimited is building the next generation of both athletes and fans.

Our athletes are in charge of their team and league decisions, and of their individual success. We reboot rosters and gameplay to create fast and exciting competition that speaks to contemporary sports fans, bringing them close to the action and the athletes in games where every moment counts. We incorporate the player-centric model that fans love about fantasy sports. We use digital media platforms and cutting-edge technology to connect fans deeply to athletes at the top of their game on and off the field, and to the game itself.

HOW THE TEAMS ARE SELECTED

A draft will be held prior to each week's matches with the top four players in the individual leaderboard serving as the team captains. The captains will then fill their rosters by selecting 10 other players. Each draft will be held on the Tuesday before the week's matches.

Uniform colors will be assigned based on the team captain's rank on the leaderboard. The top-scoring captain's team will wear gold, while the second-highest point scorer's team dons orange jerseys. The third-place team will wear blue jerseys and the fourth-place team will wear purple jerseys.

Each team will consist of 11 players, including five PINs (outside hitters and opposite hitters), two setters, three middle blockers and one libero.

RULES OF INTEREST

Match Duration: Each Athletes Unlimited volleyball match consists of three (3) sets regardless of whether a team wins two sets in the match. A set is won when a team scores 25 or more points while winning by a margin of two (2) points or more.

Golden Set: In the event the match score is tied after three (3) sets, a "Golden Set" will be played to determine the match winner. The "Golden Set" will be won by the team which scores five (5) points while winning by a two-point margin or when a team reaches 10 total points.

Substitutions: Teams are limited to a maximum of six (6) substitutions in each set. In the event any match requires a "Golden Set," teams will be permitted no more than two (2) substitutions for the additional set.

Timeouts: Each team is permitted a maximum of two (2) timeouts per set with each timeout lasting two minutes (2:00). In the event a "Golden Set" is necessary, each team will be given one (1) timeout for the additional set.

Media Timeouts: A media timeout of three minutes (3:00) will take place when a team scores 15 points in a set during regulation. There will not be a media timeout in a "Golden Set."

Time Between Sets: A timeout of five (5) minutes will take place between each set.

Captain's Challenges: A captain may initiate replay review of certain events subject to the provisions of the rule as set out below. Replay reviews triggered under this rule shall be referred to as a 'Captain's Challenge', or 'Challenge' for short.

Each team is entitled to two (2) challenges per set. In the event a "Golden Set" is played, each team will be granted one (1) challenge.

A team may use a Challenge to initiate replay review of the following events:

- 🌀 Whether a ball is in or out
- 🌀 Block touch
- 🌀 Service line fault
- 🌀 3-meter line fault
- 🌀 Center line fault
- 🌀 Net touch

Any called fault, violation, or other decision by the match officials not listed above, or any non-call, is not a challengeable event.

Officials' Reviews: Match officials may initiate a replay review of the same specific events as "Captain's Challenge" under the guidelines below. Replay reviews triggered under this rule shall be referred to as an "Officials' Review."

An Officials' Review can only occur during a set when one team has reached 20 points or during a "Golden Set." In addition, there are no limits on the number of "Officials' Reviews" and they can be called regardless of whether a team has any remaining "Captain's Challenges" in the set.

INDIVIDUAL LEADERBOARD

While traditional volleyball statistics are kept during each Athletes Unlimited match, players earn individual points by accumulating those statistics. Points accumulated by statistics, set and/or match wins and MVP selections are used to create an individual leaderboard, which determines captains for each week and the individual champion at the end of the season.

Points are awarded at the following increments during the match:

Service Ace	+12 Points
Block	+12 Points
Kill	+8 Points
Dig	+5 Points
Good Pass	+2 Points
Block Assist *	+2 Points
Assist	+1 Point
Service Error	-8 Points
Attack Error	-12 Points
Set Error	-12 Points
Pass Error	-12 Points

* - Middle blockers only

In the event a set requires more than 50 points to determine a winner, stat points will not be recorded for any stats after the 50-point mark in the set. In addition, if a match requires overtime or a "Golden Set," the stats accumulated during the "Golden Set" do not earn any individual points for the athletes on the leaderboard. There are also no additional team set win points for the "Golden Set."

In addition, athletes will be awarded 40 individual points if their team wins a single set. If the teams score the same number of points in a set, the points carry over to the next set.

Athletes on the winning team in each match will be awarded 60 individual points toward the individual leaderboard. The total score determines the overall match winner, which means a team may lose two sets, but win the overall match.

Example: The Gold Team loses the first two sets 25-23 and 25-23 to the Blue Team, but wins the last set, 25-17. The Gold Team wins the overall match points because they had the larger overall score, 71-67.

A total of three MVPs will be selected following each game by the athletes with the top player earning 60 points. The second MVP receives 40 points, while the third MVP claims 20 points.

MEDALS

The top four players on the final leaderboard in addition to the Defensive Player of the Year will receive a medal designed and fabricated for Athletes Unlimited by Lisa Issenberg, founder of Kiitellä, inc. The front face of the medal represents the identity of Athletes Unlimited, while the back face of the medal leans into the specific sport, the year, location and words about Athletes Unlimited's vision, mission and values on and off the field - Excellence in Community and Leadership.

ATHLETE COMPENSATION

Athletes are compensated in three ways during an Athletes Unlimited season, including base pay, win bonuses (set and match wins) and a leaderboard bonus. Athletes Unlimited also makes an additional donation equal to the athlete's win bonus to their selected cause partner.

POSTSEASON AWARDS

At the conclusion of the 2023 Athletes Unlimited Volleyball season, the following awards will be presented during the closing ceremony:

- 🌀 Medals to top four finishers on leaderboard
- 🌀 Defensive Player of the Year & Blocker of the Year
- 🌀 Teammate of the Year
- 🌀 Athletes Unlimited All-Position Team (top players at each position)

The All-Position Team will include one setter, one libero, one opposite, two middle blockers and two outside hitters.

THE BOOK OF UNLIMITED

The Book of Unlimited was designed, handmade and bound for Athletes Unlimited and serves as a record keeper of its leagues. The book, which was handmade by Tikhon Verygyn in his studio in Kyiv, Ukraine, weighs nearly 25 pounds, measures approximately 12" by 18" and contains nearly 500 pages. The champion, along with all who competed, are inscribed into the book. In addition, The Book of Unlimited also contains a history of achievements in Athletes Unlimited, including stories, highlights and events.

The book is opened during the Opening Ceremony for each season and is closed after the champion is named and her name is inscribed into the book. The tradition began during Athletes Unlimited Softball's inaugural season in 2020.

2023 ATHLETES UNLIMITED VOLLEYBALL ACTIVE ROSTER (NUMERICAL ORDER)

NO.	NAME	POS.	HT.	HOMETOWN	COLLEGE	PRONOUNS	PRONUNCIATION	INSTAGRAM	TWITTER
00	Amanda Benson	L	5-7	Litchfield Park, Ariz.	Oregon	She/Her		amandasbenson	abenson_10
1	Kendall White	L	5-7	Zionsville, Ind.	Penn State	She/Her		kbaby10	-
2	Brooke Nuneviller	OH	5-11	Chandler, Ariz.	Oregon	She/Her	none-uh-vill-uhr	brooke_nuneviller	brookeyy_5
3	Danielle Hart	MB	6-4	Virginia Beach, Va.	Wisconsin	She/Her		daniellehart	daniellehart
4	Ray Santos	S	5-10	Ponce, Puerto Rico	Arkansas	She/Her	rye sahn-tos	rsantos33	rsantos33
5	Molly McCage	MB	6-3	Spring, Texas	Texas	She/Her		mollymccage	mollymccage
6	Alisha Childress	S	6-0	Leland, Mich.	Penn State	She/Her	Uh-lee-shuh Chill-driss	aglass1_6	aglass6
7	Erin Fairs	OH	5-10	Houston, Texas	Louisville	She/Her		erinnfairs	erinfairs
8	Sydney Hilley	S	6-0	Brooklyn Park, Minn.	Wisconsin	She/Her		sydneyhilley	sydneyhilley
9	Sassa Gonzaga	OH	5-10	Barbacena, Brazil	-	She/Her	sah-suh gon-zah-guh	welissa10	-
10	Kaz Brown	MB	6-4	Waterloo, Iowa	Kentucky	She/Her		kazbrown	kazbrown11
11	Claire Chaussee	OH	6-0	Sun Prairie, Wis.	Louisville	She/Her	SHAW-say	clairechaussee	clairechaussee9
12	Leah Edmond	OH	6-2	Lexington, Ky.	Kentucky	She/Her		leahedmond13	leahedmond13
13	Nootsara Tomkom	S	5-7	Ban Pong, Thailand	Rattana Bundit Univ.	She/Her	noo-SAHR-uh tom-kom	nootsara13	-
14	Nicole Edelman-Cagliari	S	6-0	Boulder, Colo.	Colorado	She/Her	cag-lee-ARE-ee	nicoledelman	nicoledelman
15	Katie Lukes	OH	6-2	San Clemente, Calif.	San Diego	She/Her		katie_lukes	-
16	Jenna Rosenthal	MB	6-5	Fond du Lac, Wis.	Marquette	She/Her		jenna.rosenthal	-
17	Taylor Bruns Tegenrot	S	5-11	Normal, Ill.	South Carolina	She/Her	Taylor Bruns Tay-gen-root	tbruns27	-
18	Deja McClendon	OH	6-1	Louisville, Ky.	Penn State	She/Her	day-zhuh	dejabeja	deja_beja
20	Blake Mohler	MB	6-2	Ocean Springs, Miss.	Purdue	She/Her	moe-ler	blakemohler	blakeelizabeth1
21	Lindsey Vander Weide	OH	6-3	Turlock, Calif.	Oregon	She/Her	van-der-wide-uh	lindseyvdb	lindseyvdb
22	Yossiana Pressley	OH	6-0	Cypress, Texas	Baylor	She/Her	YAW-see-AW-nuh	yossiana22_	yossiana22
23	Tori Dixon	MB	6-3	Burnsville, Minn.	Minnesota	She/Her		toridixon06	toridixon06
24	Aury Cruz	OH	5-10	Levittown, Puerto Rico	Florida	She/Her	R-EE Crews	azcruz	azcruz
26	Maria Schlegel	OH	6-0	Asturias, Spain	Polytechnic Madrid's University	She/Her	schlay-gull	mschlegel16	-
27	Natalia Valentin-Anderson	S	5-6	Caguas, Puerto Rico	Florida International	She/Her	nuh-TAHL-ee-uh val-in-teen anderson	nvale09	-
28	Kayla Caffey	MB	6-0	Chicago, Ill.	Texas	She/Her		itskayalaxis	-
29	Lindsay Stalzer	OH	6-1	Kewanee, Ill.	Bradley	She/Her		lindsaystalzer	linzeemarie
31	Gabby Blossom	S	5-9	St. Louis, Mo.	San Diego	She/Her		gblossom13	-
32	Nia Parker-Robinson	OH	6-2	Indianapolis, Ind.	North Carolina	She/Her	knee-uh	niarobinson_	-
33	Nia Reed	OPP	6-1	Fort Lee, N.J.	Penn State	She/Her	knee-uh	niabia7	niakareed
37	Alli Linnehan	OH	6-1	Floyds Knobs, Ind.	Kentucky	She/Her	alley lynn-uh-han	allistumler	astumler
40	Nomaris Vélez Agosto	L	5-4	Corozal, Puerto Rico	Inter American Univ.	She/Her	no-mahr-is vuh-lez ah-go-sto	nomarivelez23	-
42	Symone Abbott	OPP	6-1	Detroit, Mich.	Northwestern	She/Her		symoneabbs	symoney10
44	Willow Johnson	OPP	6-3	Paradise Valley, Ariz.	Oregon	She/Her		willowj4	johnson4willow
46	Morgan Hentz	L	5-9	Lakeside Park, Ky.	Stanford	She/Her		morganhentz	-
48	Karis Watson	MB	6-2	Rock Hill, S.C.	Clemson	She/Her	care-iss	karisw8	-
54	Emma Willis	MB	6-3	La Jolla, Calif.	Denver	She/Her		emmawillis7	-
55	Ali Bastianelli	MB	6-3	Marysville, Mich.	Illinois	She/Her	Ali Bas-tee-uh-nell-ee	alisonrose5	alisonrose_5
77	Genesis Collazo	OPP	6-1	Corozal, Puerto Rico	-	She/Her	hen-uh-sis coy-ah-zo	genesis.collazo7	-
81	Bethania De La Cruz	OH	6-2	Santo Domingo, Dominican Republic	-	She/Her	Buh-TAN-ya De La Cruz	thebigbeth	-
88	Marin Grote	MB	6-4	Burbank, Calif.	Washington	She/Her	MAIR-in groat	marin_grote	-
91	Saskia Hippe	OPP	6-1	Berlin, Germany	-	She/Her	sahs-kee-uh hip-ah	saskia_hippe	sassi_13
97	Shelly Fanning	MB	6-2	Cypress, Texas	Baylor	She/Her		shelleystafford	-

2023 ATHLETES UNLIMITED VOLLEYBALL INACTIVE ROSTER (NUMERICAL ORDER)

NO.	NAME	POS.	HT.	HOMETOWN	COLLEGE	PRONOUNS	PRONUNCIATION	INSTAGRAM	TWITTER
19	Anota Adekunle	MB	6-1	Humble, Texas	Rice	She/Her		anotaadekunle	anota_michelle

2023 ATHLETES UNLIMITED VOLLEYBALL ALPHABETICAL ROSTER

NO.	NAME	NO.	NAME	NO.	NAME	NO.	NAME
42	Symone Abbott	81	Bethania De La Cruz	44	Willow Johnson	26	Maria Schlegel
19	Anota Adekunle	23	Tori Dixon	37	Alli Linnehan	29	Lindsay Stalzer
55	Ali Bastianelli	14	Nicole Edelman Cagliari	15	Katie Lukes	13	Nootsara Tomkom
00	Amanda Benson	12	Leah Edmond	5	Molly McCage	27	Natalia Valentin-Anderson
31	Gabby Blossom	7	Erin Fairs	18	Deja McClendon	21	Lindsey Vander Weide
10	Kaz Brown	97	Shelly Fanning	20	Blake Mohler	40	Nomaris Vélez Agosto
17	Taylor Bruns Tegenrot	9	Sassa Gonzaga	2	Brooke Nuneviller	48	Karis Watson
28	Kayla Caffey	88	Marin Grote	32	Nia Parker-Robinson	1	Kendall White
11	Claire Chaussee	3	Danielle Hart	22	Yossiana Pressley	54	Emma Willis
6	Alisha Childress	46	Morgan Hentz	33	Nia Reed		
77	Genesis Collazo	8	Sydney Hilley	16	Jenna Rosenthal		
24	Aury Cruz	91	Saskia Hippe	4	Ray Santos		

ATHLETE CAUSES

The Athlete Causes program, powered by Give Lively, will provide funding to charities of the players' choosing equal to 100 percent of their season win bonus and players will have the opportunity to create their own fundraising pages to support the organizations of their choice.

NO.	ATHLETE	CAUSE
00	Amanda Benson	One Love Foundation
1	Kendall White	Operation Underground Railroad
2	Brooke Nuneviller	Pink Fund
3	Danielle Hart	Alzheimer's Association
4	Ray Santos	Global Village Project
5	Molly McCage	1% For The Planet
6	Alisha Childress	Childress Family Foundation
7	Erin Fairs	We Serve First
8	Sydney Hilley	Side Out Foundation
9	Welissa Gonzaga	National Domestic Violence Hotline
10	Kaz Brown	Lupus Foundation of America
11	Claire Chaussee	Lasley and Rhyan Prather Foundation
12	Leah Edmond	American Cancer Society
13	Nootsara Tomkom	The Virago Project
14	Nicole Edelman-Cagliari	Women's Sports Foundation
15	Katie Lukes	Morgan's Message
16	Jenna Rosenthal	Operation Underground Railroad
17	Taylor Bruns Tegenrot	American Foundation for Suicide Prevention
18	Deja McClendon	JOYcademy
19	Anota Adekunle	Ella Baker Center for Human Rights
20	Blake Mohler	Friends of Jaclyn
21	Lindsey Vander Weide	The Humane Society
22	Yossiana Pressley	CURE Childhood Cancer
23	Tori Dixon	OC Pom Rescue
24	Aury Cruz	Susan G Komen
26	Maria Schlegel	American Foundation for Suicide Prevention
27	Natalia Valentin-Anderson	Baby2Baby
28	Kayla Caffey	BUILD (Broader Urban Involvement & Leadership Development)
29	Lindsay Stalzer	1% For The Planet
31	Gabby Blossom	Michael J Fox Foundation
32	Nia Parker-Robinson	Eclectic Soul VOICES Corporation
33	Nia Reed	New Heights Youth Foundation
37	Alli Linnehan	Go Ministries
40	Nomaris Vélez Agosto	Morgan's Message
42	Symone Abbott	Morgan's Message
44	Willow Johnson	Phoenix Police Foundation
46	Morgan Hentz	New Perceptions
48	Karis Watson	Operation Underground Railroad
54	Emma Willis	The Citizens Foundation
55	Ali Bastianelli	The Rainbow Connection
77	Genesis Collazo	Players for Pits
81	Bethania De La Cruz	Starlings USA
88	Marin Grote	1% For The Planet
91	Saskia Hippe	The Virago Project
97	Shelly Fanning	Uplifting Athletes

2023 ATHLETES UNLIMITED VOLLEYBALL SCHEDULE AND RESULTS

Date	Match #	Match	Broadcast	Time/Score	MVP 1	MVP 2	MVP 3
October 6	1	Team Nootsara vs. Team Valentin-Anderson	ESPN+	Team Nootsara, 75-63	Claire Chaussee	Nootsara Tomkom	Nia Reed
October 6	2	Team De La Cruz vs. Team Edmond	ESPN+	Team Edmond, 77-73	Alli Linnehan	Bethania De La Cruz	Leah Edmond
October 8	3	Team Edmond vs. Team Valentin-Anderson	ESPN+	Team Edmond, 75-58	Leah Edmond	Sydney Hilley	Danielle Hart
October 8	4	Team Nootsara vs. Team De La Cruz	ESPNU	Team Nootsara, 70-69	Willow Johnson	Ali Bastianelli	Nootsara Tomkom
October 9	5	Team Edmond vs. Team Nootsara	ESPNU	Team Edmond, 75-44	Morgan Hentz	Leah Edmond	Sydney Hilley
October 9	6	Team Valentin-Anderson vs. Team De La Cruz	ESPNU	Team De La Cruz, 74-72 (GS)	Bethania De La Cruz	Kaz Brown	Kayla Caffey
October 13	7	Team Hentz vs. Team Linnehan	ESPN+	Team Hentz, 76-51	Bethania De La Cruz	Morgan Hentz	Taylor Bruns Tegenrot
October 13	8	Team Edmond vs. Team Hilley	ESPN+	Team Hilley, 74-62	Claire Chaussee	Yossiana Pressley	Sydney Hilley
October 15	9	Team Hilley vs. Team Linnehan	ESPN+	Team Hilley, 75-53	Claire Chaussee	Sydney Hilley	Kayla Caffey
October 15	10	Team Hentz vs. Team Edmond	ESPN+	Team Hentz, 73-64	Brooke Nuneviller	Morgan Hentz	Bethania De La Cruz
October 16	11	Team Hilley vs. Team Hentz	ESPN+	Team Hentz, 78-55	Saskia Hippe	Bethania De La Cruz	Morgan Hentz
October 16	12	Team Linnehan vs. Team Edmond	ESPNU	Team Edmond, 69-63	Molly McCage	Deja McClendon	Leah Edmond
October 20	13	Team Hilley vs. Team Hentz	ESPN+	Team Hentz, 75-55	Nootsara Tomkom	Lindsey Vander Weide	Molly McCage
October 20	14	Team Edmond vs. Team Rosenthal	ESPN+	Team Edmond, 71-68	Tori Dixon	Saskia Hippe	Claire Chaussee
October 22	15	Team Rosenthal vs. Team Hentz	ESPNU	Team Hentz, 73-60	Molly McCage	Alli Linnehan	Morgan Hentz
October 22	16	Team Hilley vs. Team Edmond	ESPNU	Team Edmond, 72-60	Leah Edmond	Tori Dixon	Natalia Valentin-Anderson
October 23	17	Team Rosenthal vs. Team Hilley	ESPN+	Team Hilley, 72-59	Willow Johnson	Karis Watson	Sydney Hilley
October 23	18	Team Hentz vs. Team Edmond	ESPNU	Team Hentz, 75-47	Molly McCage	Alli Linnehan	Nootsara Tomkom
October 27	19	Team Linnehan vs. Team Hentz	ESPN+	Team Linnehan, 71-68	Alli Linnehan	Willow Johnson	Molly McCage
October 27	20	Team Edmond vs. Team Hilley	ESPN+	Team Edmond, 73-71	Claire Chaussee	Leah Edmond	Lindsey Vander Weide
October 29	21	Team Hilley vs. Team Hentz	ESPN+	Team Hentz, 79-68	Brooke Nuneviller	Bethania De La Cruz	Alisha Childress
October 29	22	Team Linnehan vs. Team Edmond	ESPNU	Team Linnehan, 75-64	Willow Johnson	Nootsara Tomkom	Alli Linnehan
October 30	23	Team Hilley vs. Team Linnehan	ESPN+	Team Hilley, 71-66	Yossiana Pressley	Alli Linnehan	Nicole Edelman-Cagliari
October 30	24	Team Hentz vs. Team Edmond	ESPNU	Team Edmond, 70-63	Leah Edmond	Kaz Brown	Natalia Valentin-Anderson
November 3	25	Team Blue vs. Team Orange	ESPN+	7 p.m. ET			
November 3	26	Team Gold vs. Team Purple	ESPN+	9:30 p.m. ET			
November 5	27	Team Purple vs. Team Orange	ESPN+	7 p.m. ET			
November 5	28	Team Blue vs. Team Gold	ESPNU	9:30 p.m. ET			
November 6	29	Team Purple vs. Team Blue	ESPN+	7 p.m. ET			
November 6	30	Team Orange vs. Team Gold	ESPNU	9:30 p.m. ET			

2023 ATHLETES UNLIMITED VOLLEYBALL LEADERBOARD

RANK	CHANGE	NAME	TOTAL POINTS	WIN POINTS	STAT POINTS	MVP POINTS
1	0	Leah Edmond	3,406	1,280	1,826	300
2	1	Alli Linnehan	3,141	1,400	1,481	260
3	-1	Morgan Hentz	2,919	1,760	979	180
4	3	Brooke Nuneviller	2,643	1,020	1,503	120
5	0	Bethania De La Cruz	2,541	1,100	1,181	260
6	-2	Sydney Hilley	2,486	1,180	1,166	140
7	2	Claire Chaussee	2,457	900	1,297	260
8	-2	Molly McCage	2,439	1,360	859	220
9	-1	Lindsey Vander Weide	2,359	1,500	799	60
10	0	Natalia Valentin-Anderson	2,328	1,140	1,148	40
11	0	Génesis Collazo	2,286	1,500	786	0
12	3	Nootsara Tomkom	2,106	1,180	746	180
13	-1	Jenna Rosenthal	2,046	1,300	746	0
14	-1	Saskia Hippe	1,971	1,120	751	100
15	11	Willow Johnson	1,879	800	859	220
16	8	Nomaris Vélez Agosto	1,842	920	922	0
17	1	Tori Dixon	1,776	940	736	100
18	3	Alisha Childress	1,772	820	932	20
19	-3	Danielle Hart	1,747	1,280	447	20
20	-1	Ali Bastianelli	1,746	1,100	606	40
21	4	Yossiana Pressley	1,738	920	718	100
22	-8	Aury Cruz	1,732	900	832	0
23	-6	Emma Willis	1,711	1,360	351	0
24	-4	Taylor Bruns Tegenrot	1,672	1,400	252	20
25	-3	Amanda Benson	1,604	860	744	0
26	1	Kendall White	1,598	780	818	0
27	6	Kaz Brown	1,488	680	728	80
28	0	Karis Watson	1,461	1,260	161	40
29	-6	Deja McClendon	1,405	1,180	185	40
30	2	Lindsay Stalzer	1,329	1,240	89	0
31	8	Erin Fairs	1,310	900	410	0
32	-2	Sassá Gonzaga	1,268	1,040	228	0
33	-4	Kayla Caffey	1,257	840	377	40
34	-3	Nia Reed	1,149	900	229	20
35	-1	Ray Santos	1,141	1,140	1	0
36	-1	Marin Grote	1,096	1,040	56	0
37	1	Katie Lukes	1,083	840	243	0
38	-2	Nicole Edelman-Cagliari	1,061	900	141	20
39	-2	Symone Abbott	1,044	1,040	4	0
40	0	Shelly Fanning	1,039	780	259	0
41	1	Blake Mohler	935	880	55	0
42	-1	Gabby Blossom	912	880	32	0
43	0	Nia Parker-Robinson	782	780	2	0
44	0	Maria Schlegel	681	580	101	0
45	0	Anota Adekunle	236	220	16	0

2023 ATHLETES UNLIMITED VOLLEYBALL LEADERBOARD POINTS BY WEEK

NAME	WEEK ONE	WEEK TWO	WEEK THREE	WEEK FOUR	WEEK FIVE	TOTAL POINTS
Abbott, Symone	220	36	508	280		1,044
Adekunle, Anota	236	0	0	0		236
Bastianelli, Ali	475	80	773	418		1,746
Benson, Amanda	248	495	494	367		1,604
Blossom, Gabby	225	212	180	295		912
Brown, Kaz	279	215	395	599		1,488
Bruns Tegenrot, Taylor	492	260	545	375		1,672
Caffey, Kayla	407	449	209	192		1,257
Chaussee, Claire	578	819	420	640		2,457
Childress, Alisha	485	452	359	476		1,772
Collazo, Génesis	745	316	743	482		2,286
Cruz, Aury	439	634	416	243		1,732
De La Cruz, Bethania	729	1,145	120	547		2,541
Dixon, Tori	242	539	572	423		1,776
Edelman-Cagliari, Nicole	317	320	140	284		1,061
Edmond, Leah	1,028	709	877	792		3,406
Fairs, Erin	223	215	280	592		1,310
Fanning, Shelly	90	412	146	391		1,039
Gonzaga, Sassá	309	334	355	270		1,268
Grote, Marin	286	220	280	310		1,096
Hart, Danielle	817	382	268	280		1,747
Hentz, Morgan	881	835	701	502		2,919
Hilley, Sydney	880	586	529	491		2,486
Hippe, Saskia	321	803	517	330		1,971
Johnson, Willow	590	221	360	708		1,879
Linnehan, Alli	923	155	1,053	1,010		3,141
Lukes, Katie	86	494	160	343		1,083
McCage, Molly	374	574	944	547		2,439
McClendon, Deja	500	329	389	187		1,405
Mohler, Blake	80	28	500	327		935
Nuneviller, Brooke	364	941	583	755		2,643
Parker-Robinson, Nia	83	226	113	360		782
Pressley, Yossiana	359	611	230	538		1,738
Reed, Nia	433	308	228	180		1,149
Rosenthal, Jenna	675	748	261	362		2,046
Santos, Ray	92	505	280	264		1,141
Schlegel, Maria	98	124	180	279		681
Stalzer, Lindsay	360	500	86	383		1,329
Tomkom, Nootsara	579	145	750	632		2,106
Valentin-Anderson, Natalia	400	860	545	523		2,328
Vander Weide, Lindsey	481	500	854	524		2,359
Vélez Agosto, Nomaris	414	425	371	632		1,842
Watson, Karis	274	500	300	387		1,461
White, Kendall	500	258	378	462		1,598
Willis, Emma	500	580	313	318		1,711

2023 ATHLETES UNLIMITED VOLLEYBALL SEASON STATISTICS

RANK	PLAYER	SP	K	K/S	E	ATT.	PCT.	A	A/S	SET E	SA	SA/S	SE	TRA	RE	PCT.	D	D/S	BS	BS/S	BA	BA/S	LPTS
1	Edmond, Leah	36	183	5.08	53	420	.310	7	0.19	0	4	0.11	8	300	14	.480	121	3.36	24	0.67	0	0.00	3,406
2	Linnehan, Alli	36	126	3.50	30	387	.248	9	0.25	0	6	0.17	6	189	7	.490	93	2.58	21	0.58	0	0.00	3,141
3	Hentz, Morgan	36	0	0.00	0	1	.000	35	0.97	1	0	0.00	0	122	4	.650	174	4.83	0	0.00	0	0.00	2,919
4	Nuneviller, Brooke	37	138	3.73	29	380	.287	6	0.16	1	5	0.14	9	223	5	.540	116	3.14	3	0.08	0	0.00	2,643
5	Hilley, Sydney	36	22	0.61	4	65	.277	432	12.00	6	11	0.31	5	4	0	.000	89	2.47	13	0.36	0	0.00	2,486
6	Chaussee, Claire	35	177	5.06	59	506	.233	3	0.09	0	4	0.11	28	296	11	.510	91	2.60	12	0.34	0	0.00	2,457
7	McCage, Molly	35	97	2.77	18	189	.418	3	0.09	0	3	0.09	15	6	0	.500	26	0.74	17	0.49	15	0.43	2,439
8	De La Cruz, Bethania	25	126	5.04	26	280	.357	5	0.20	2	12	0.48	9	203	6	.520	62	2.48	5	0.20	0	0.00	2,421
9	Vander Weide, Lindsey	29	77	2.66	27	255	.196	5	0.17	0	7	0.24	6	237	13	.500	55	1.90	8	0.28	0	0.00	2,359
10	Valentin-Anderson, Natalia	37	16	0.43	3	39	.333	429	11.59	8	11	0.30	12	2	0	.000	121	3.27	10	0.27	0	0.00	2,328
11	Collazo, Génesis	35	55	1.57	28	196	.138	4	0.11	1	4	0.11	4	2	0	.500	89	2.54	19	0.54	0	0.00	2,286
12	Tomkom, Nootsara	34	5	0.15	0	22	.227	318	9.35	8	3	0.09	7	2	2	.000	96	2.82	4	0.12	0	0.00	2,106
13	Rosenthal, Jenna	35	71	2.03	16	168	.327	2	0.06	1	3	0.09	5	11	1	.360	36	1.03	15	0.43	18	0.51	2,046
14	Hippe, Saskia	36	112	3.11	53	336	.176	6	0.17	0	6	0.17	20	0	0	.000	89	2.47	11	0.31	0	0.00	1,971
15	Johnson, Willow	37	146	3.95	59	378	.230	2	0.05	1	3	0.08	15	1	0	1.000	73	1.97	13	0.35	0	0.00	1,879
16	Vélez Agosto, Nomaris	37	0	0.00	0	0	.000	38	1.03	0	0	0.00	0	184	7	.570	154	4.16	0	0.00	0	0.00	1,842
17	Dixon, Tori	37	54	1.46	11	127	.339	4	0.11	1	2	0.05	4	10	0	.500	24	0.65	24	0.65	17	0.46	1,776
18	Childress, Alisha	36	15	0.42	4	47	.234	423	11.75	15	5	0.14	7	0	0	.000	99	2.75	10	0.28	0	0.00	1,772
19	Hart, Danielle	18	37	2.06	10	95	.284	3	0.17	0	3	0.17	7	7	0	.570	16	0.89	16	0.89	14	0.78	1,747
20	Bastianelli, Ali	36	58	1.61	15	135	.319	5	0.14	0	6	0.17	16	5	0	.400	15	0.42	20	0.56	27	0.75	1,746
21	Pressley, Yossiana	32	88	2.75	40	249	.193	1	0.03	2	4	0.13	9	97	6	.360	80	2.50	12	0.38	0	0.00	1,738
22	Cruz, Aury	32	60	1.88	28	193	.166	6	0.19	1	4	0.13	6	171	4	.550	96	3.00	5	0.16	0	0.00	1,732
23	Willis, Emma	26	42	1.62	12	94	.319	3	0.12	0	2	0.08	7	3	0	.330	18	0.69	5	0.19	18	0.69	1,711
24	Bruns Tegenrot, Taylor	32	9	0.28	1	25	.320	66	2.06	1	1	0.03	3	0	0	.000	19	0.59	5	0.16	0	0.00	1,672
25	Benson, Amanda	37	0	0.00	0	0	.000	24	0.65	0	0	0.00	0	189	8	.610	118	3.19	0	0.00	0	0.00	1,604
26	White, Kendall	36	0	0.00	0	0	.000	32	0.89	0	0	0.00	0	202	10	.540	138	3.83	0	0.00	0	0.00	1,598
27	Brown, Kaz	34	73	2.15	21	166	.313	2	0.06	0	1	0.03	4	6	1	.330	10	0.29	28	0.82	19	0.56	1,488
28	Watson, Karis	21	32	1.52	10	71	.310	4	0.19	0	2	0.10	10	5	2	.200	10	0.48	3	0.14	11	0.52	1,461
29	McClendon, Deja	12	11	0.92	7	53	.075	1	0.08	1	0	0.00	1	46	2	.460	34	2.83	1	0.08	0	0.00	1,405
30	Stalzer, Lindsay	9	11	1.22	4	57	.123	1	0.11	0	0	0.00	3	24	2	.540	14	1.56	0	0.00	0	0.00	1,329
31	Fairs, Erin	22	35	1.59	14	102	.206	6	0.27	0	3	0.14	6	142	11	.430	52	2.36	5	0.23	0	0.00	1,310
32	Gonzaga, Sassá	15	2	0.13	2	15	.000	3	0.20	0	0	0.00	0	47	1	.530	39	2.60	0	0.00	0	0.00	1,268
33	Caffey, Kayla	23	38	1.65	14	73	.329	1	0.04	0	0	0.00	8	5	2	.000	10	0.43	22	0.96	7	0.30	1,257
34	Reed, Nia	15	30	2.00	21	125	.072	2	0.13	0	1	0.07	0	0	0	.000	31	2.07	6	0.40	0	0.00	1,149
35	Santos, Ray	14	0	0.00	0	0	.000	0	0.00	0	1	0.07	2	0	0	.000	1	0.07	0	0.00	0	0.00	1,141
36	Grote, Marin	6	6	1.00	3	14	.214	0	0.00	0	4	0.67	4	0	0	.000	0	0.00	2	0.33	2	0.33	1,096
37	Lukes, Katie	27	62	2.30	42	223	.090	5	0.19	0	0	0.00	8	182	6	.450	30	1.11	6	0.22	0	0.00	1,083
38	Edelman-Cagliari, Nicole	11	2	0.18	1	14	.071	22	2.00	1	0	0.00	1	0	0	.000	15	1.36	5	0.45	0	0.00	1,061
39	Abbott, Symone	2	2	1.00	1	8	.125	0	0.00	0	0	0.00	0	1	0	.000	0	0.00	0	0.00	0	0.00	1,044
40	Fanning, Shelly	22	24	1.09	8	60	.267	3	0.14	0	4	0.18	4	0	0	.000	16	0.73	4	0.18	8	0.36	1,039
41	Blossom, Gabby	14	0	0.00	0	1	.000	15	1.07	0	0	0.00	1	0	0	.000	5	0.36	0	0.00	0	0.00	912
42	Mohler, Blake	7	4	0.57	3	15	.067	0	0.00	0	0	0.00	1	2	0	.500	5	0.71	3	0.43	2	0.29	855
43	Parker-Robinson, Nia	8	12	1.50	9	35	.086	0	0.00	0	1	0.13	3	10	0	.300	4	0.50	0	0.00	0	0.00	782
44	Schlegel, Maria	11	8	0.73	5	36	.083	2	0.18	1	0	0.00	3	37	1	.650	19	1.73	0	0.00	0	0.00	681
45	Adekunle, Anota	1	2	2.00	0	3	.667	0	0.00	0	0	0.00	0	0	0	.000	0	0.00	0	0.00	0	0.00	236

2023 ATHLETES UNLIMITED VOLLEYBALL STATISTICS | WEEK ONE

RANK	PLAYER	SP	K	K/S	E	ATT.	PCT.	A	A/S	SET E	SA	SA/S	SE	TRA	RE	PCT.	D	D/S	BS	BS/S	BA	BA/S	LPTS
1	Edmond, Leah	9	46	5.11	15	97	.320	1	0.11	0	1	0.11	4	84	4	.510	21	2.33	9	1.00	0	0.00	1,028
2	Linnehan, Alli	9	32	3.56	7	99	.253	2	0.22	0	1	0.11	2	44	1	.480	24	2.67	5	0.56	0	0.00	923
3	Hentz, Morgan	9	0	0.00	0	0	.000	8	0.89	0	0	0.00	0	31	0	.680	57	6.33	0	0.00	0	0.00	881
4	Hilley, Sydney	9	6	0.67	1	13	.385	111	12.33	2	2	0.22	0	2	0	.000	20	2.22	7	0.78	0	0.00	880
5	Hart, Danielle	9	17	1.89	4	45	.000	0	0.00	0	2	0.22	3	3	0	1.000	11	1.22	12	1.33	12	1.33	817
6	Collazo, Génesis	9	14	1.56	7	42	.000	2	0.22	0	1	0.11	0	0	0	.000	23	2.56	7	0.78	0	0.00	745
7	De La Cruz, Bethania	10	47	4.70	9	107	.355	2	0.20	1	6	0.60	4	74	2	.550	22	2.20	1	0.10	0	0.00	729
8	Rosenthal, Jenna	9	20	2.22	3	48	.354	1	0.11	0	0	0.00	1	1	0	.000	6	0.67	1	0.11	12	1.33	675
9	Johnson, Willow	10	50	5.00	15	117	.299	0	0.00	0	0	0.00	4	1	0	1.000	18	1.80	5	0.50	0	0.00	590
10	Tomkom, Nootsara	8	0	0.00	0	4	.000	88	11.00	1	2	0.25	0	0	0	.000	23	2.88	2	0.25	0	0.00	579
11	Chaussee, Claire	8	31	3.88	12	89	.213	0	0.00	0	1	0.13	5	63	3	.480	18	2.25	4	0.50	0	0.00	578
12	McClendon, Deja	0	0	0.00	0	0	.000	0	0.00	0	0	0.00	0	0	0	.000	0	0.00	0	0.00	0	0.00	500
12	White, Kendall	9	0	0.00	0	0	.000	10	1.11	0	0	0.00	0	41	1	.630	34	3.78	0	0.00	0	0.00	500
12	Willis, Emma	0	0	0.00	0	0	.000	0	0.00	0	0	0.00	0	0	0	.000	0	0.00	0	0.00	0	0.00	500
15	Bruns Tegenrot, Taylor	9	0	0.00	0	1	.000	0	0.00	0	0	0.00	1	0	0	.000	1	0.11	0	0.00	0	0.00	492
16	Childress, Alisha	10	4	0.40	2	15	.133	127	12.70	2	0	0.00	2	0	0	.000	27	2.70	3	0.30	0	0.00	485
17	Vander Weide, Lindsey	9	22	0.00	8	75	.000	1	0.00	0	1	0.00	2	79	4	.520	24	0.00	1	0.00	0	0.00	481
18	Bastianelli, Ali	9	22	0.00	5	39	.000	1	0.00	0	3	0.00	4	3	0	.670	2	0.00	1	0.00	4	0.00	475
19	Cruz, Aury	7	17	0.00	6	43	.000	2	0.00	0	0	0.00	1	36	1	.470	11	0.00	2	0.00	0	0.00	439
20	Reed, Nia	7	18	0.00	10	71	.000	1	0.00	0	1	0.00	0	0	0	.000	12	0.00	3	0.00	0	0.00	433
21	Vélez Agosto, Nomaris	10	0	0.00	0	0	.000	8	0.80	0	0	0.00	0	37	2	.570	36	3.60	0	0.00	0	0.00	414
22	Caffey, Kayla	9	13	0.00	5	23	.000	1	0.00	0	0	0.00	3	3	1	.000	6	0.00	10	0.00	4	0.00	407
23	Valentin-Anderson, Natalia	10	3	0.30	1	10	.000	91	9.10	2	2	0.20	1	0	0	.000	40	4.00	4	0.40	0	0.00	400
24	McCage, Molly	8	16	0.00	3	35	.000	1	0.00	0	0	0.00	6	0	0	.000	3	0.00	2	0.00	5	0.00	374
25	Nuneviller, Brooke	10	29	0.00	8	79	.000	1	0.00	0	1	0.00	2	58	1	.550	22	0.00	1	0.00	0	0.00	364
26	Stalzer, Lindsay	0	0	0.00	0	0	.000	0	0.00	0	0	0.00	0	0	0	.000	0	0.00	0	0.00	0	0.00	360
27	Pressley, Yossiana	8	17	2.13	11	61	.098	0	0.00	0	0	0.00	0	41	2	.370	9	1.13	2	0.25	0	0.00	359
28	Hippe, Saskia	10	37	3.70	16	105	.000	2	0.20	0	0	0.00	2	0	0	.000	27	2.70	1	0.10	0	0.00	321
29	Edelman-Cagliari, Nicole	4	1	0.00	0	4	.000	12	0.00	1	0	0.00	1	0	0	.000	5	0.00	1	0.00	0	0.00	317
30	Gonzaga, Sassá	4	1	0.25	2	6	-.167	0	0.00	0	0	0.00	0	8	0	.630	7	1.75	0	0.00	0	0.00	309
31	Grote, Marin	1	0	0.00	0	2	.000	0	0.00	0	0	0.00	1	0	0	.000	0	0.00	1	1.00	1	1.00	286
32	Brown, Kaz	7	15	2.14	5	38	.263	0	0.00	0	0	0.00	2	0	0	.000	1	0.14	9	1.29	2	0.29	279
33	Watson, Karis	10	11	1.10	3	26	.000	1	0.10	0	1	0.10	5	2	1	.500	6	0.60	1	0.10	3	0.30	274
34	Benson, Amanda	10	0	0.00	0	0	.000	12	1.20	0	0	0.00	0	56	3	.550	26	2.60	0	0.00	0	0.00	248
35	Dixon, Tori	10	15	0.00	5	38	.000	2	0.00	0	2	0.00	1	2	0	.500	8	0.00	3	0.00	3	0.00	242
36	Adekunle, Anota	1	2	0.00	0	3	.000	0	0.00	0	0	0.00	0	0	0	.000	0	0.00	0	0.00	0	0.00	236
37	Blossom, Gabby	6	0	0.00	0	0	.000	0	0.00	0	0	0.00	0	0	0	.000	1	0.17	0	0.00	0	0.00	225
38	Fairs, Erin	5	0	0.00	0	0	.000	1	0.20	0	0	0.00	0	8	1	.000	4	0.80	0	0.00	0	0.00	223
39	Abbott, Symone	0	0	0.00	0	0	.000	0	0.00	0	0	0.00	0	0	0	.000	0	0.00	0	0.00	0	0.00	220
40	Schlegel, Maria	5	3	0.60	3	12	.000	0	0.00	0	0	0.00	1	16	1	.630	6	1.20	0	0.00	0	0.00	98
41	Santos, Ray	3	0	0.00	0	0	.000	0	0.00	0	1	0.33	0	0	0	.000	0	0.00	0	0.00	0	0.00	92
42	Fanning, Shelly	3	4	0.00	3	12	.083	0	0.00	0	0	0.00	0	0	0	.000	0	0.00	1	0.00	1	0.00	90
43	Lukes, Katie	9	13	1.44	16	58	-.052	3	0.33	0	0	0.00	4	59	0	.490	11	1.22	1	0.11	0	0.00	86
44	Parker-Robinson, Nia	2	5	2.50	4	16	.063	0	0.00	0	0	0.00	0	10	0	.300	1	0.50	0	0.00	0	0.00	83

2023 ATHLETES UNLIMITED VOLLEYBALL STATISTICS | WEEK TWO

RANK	PLAYER	SP	K	K/S	E	ATT.	PCT.	A	A/S	SET E	SA	SA/S	SE	TRA	RE	PCT.	D	D/S	BS	BS/S	BA	BA/S	LPTS
1	De La Cruz, Bethania	9	53	5.89	8	111	.405	1	0.11	1	4	0.44	2	60	2	.500	24	2.67	2	0.22	0	0.00	1,145
2	Nuneviller, Brooke	9	31	3.44	3	84	.333	1	0.11	0	1	0.11	3	57	4	.510	34	3.78	0	0.00	0	0.00	941
3	Valentin-Anderson, Natalia	9	3	0.33	0	6	.500	126	14.00	1	7	0.78	4	0	0	.000	28	3.11	3	0.33	0	0.00	860
4	Hentz, Morgan	9	0	0.00	0	0	.000	11	1.22	0	0	0.00	0	33	2	.580	43	4.78	0	0.00	0	0.00	835
5	Chaussee, Claire	9	49	5.44	13	126	.286	0	0.00	0	1	0.11	8	71	4	.540	23	2.56	4	0.44	0	0.00	819
6	Hippe, Saskia	9	29	3.22	12	83	.205	1	0.11	0	4	0.44	4	0	0	.000	22	2.44	4	0.44	0	0.00	803
7	Rosenthal, Jenna	9	21	2.33	2	44	.432	0	0.00	0	1	0.11	1	4	0	.250	10	1.11	4	0.44	0	0.00	748
8	Edmond, Leah	9	44	4.89	10	105	.324	5	0.56	0	2	0.22	1	82	7	.440	36	4.00	4	0.44	0	0.00	709
9	Cruz, Aury	9	16	1.78	5	53	.208	1	0.11	0	3	0.33	1	47	0	.620	29	3.22	1	0.11	0	0.00	634
10	Pressley, Yossiana	9	22	2.44	6	54	.296	0	0.00	1	3	0.33	3	0	0	.000	28	3.11	1	0.11	0	0.00	611
11	Hilley, Sydney	9	5	0.56	2	15	.200	110	12.22	2	3	0.33	1	1	0	.000	13	1.44	1	0.11	0	0.00	586
12	Willis, Emma	9	11	1.22	3	23	.348	2	0.22	0	1	0.11	4	0	0	.000	2	0.22	2	0.22	6	0.67	580
13	McCage, Molly	9	27	3.00	4	52	.442	2	0.22	0	1	0.11	2	0	0	.000	10	1.11	6	0.67	3	0.33	574
14	Dixon, Tori	9	15	1.67	1	32	.438	1	0.11	0	0	0.00	1	4	0	.500	10	1.11	5	0.56	2	0.22	539
15	Santos, Ray	3	0	0.00	0	0	.000	0	0.00	0	0	0.00	0	0	0	.000	1	0.33	0	0.00	0	0.00	505
16	Stalzer, Lindsay	1	0	0.00	0	0	.000	0	0.00	0	0	0.00	0	0	0	.000	0	0.00	0	0.00	0	0.00	500
16	Vander Weide, Lindsey	2	0	0.00	0	1	.000	0	0.00	0	0	0.00	0	0	0	.000	0	0.00	0	0.00	0	0.00	500
16	Watson, Karis	0	0	0.00	0	0	.000	0	0.00	0	0	0.00	0	0	0	.000	0	0.00	0	0.00	0	0.00	500
19	Benson, Amanda	9	0	0.00	0	0	.000	3	0.33	0	0	0.00	0	52	3	.670	28	3.11	0	0.00	0	0.00	495
20	Lukes, Katie	7	32	4.57	8	88	.273	1	0.14	0	0	0.00	3	65	2	.480	15	2.14	2	0.29	0	0.00	494
21	Childress, Alisha	9	5	0.56	0	11	.455	114	12.67	5	1	0.11	3	0	0	.000	30	3.33	0	0.00	0	0.00	452
22	Caffey, Kayla	6	12	2.00	4	24	.333	0	0.00	0	0	0.00	2	0	0	.000	1	0.17	6	1.00	0	0.00	449
23	Vélez Agosto, Nomaris	9	0	0.00	0	0	.000	6	0.67	0	0	0.00	0	42	3	.600	37	4.11	0	0.00	0	0.00	425
24	Fanning, Shelly	9	12	1.33	3	32	.281	2	0.22	0	4	0.44	3	0	0	.000	12	1.33	3	0.33	5	0.56	412
25	Hart, Danielle	3	6	2.00	1	19	.263	0	0.00	0	0	0.00	1	0	0	.000	2	0.67	2	0.67	0	0.00	382
26	Gonzaga, Sassá	1	0	0.00	0	2	.000	0	0.00	0	0	0.00	0	3	0	.670	2	2.00	0	0.00	0	0.00	334
27	McClendon, Deja	3	5	1.67	3	20	.100	0	0.00	0	0	0.00	0	9	0	.560	11	3.67	0	0.00	0	0.00	329
28	Edelman-Cagliari, Nicole	0	0	0.00	0	0	.000	0	0.00	0	0	0.00	0	0	0	.000	0	0.00	0	0.00	0	0.00	320
29	Collazo, Génesis	8	12	1.50	8	49	.082	0	0.00	0	0	0.00	0	0	0	.000	12	1.50	3	0.38	0	0.00	316
30	Reed, Nia	1	0	0.00	1	2	-.500	0	0.00	0	0	0.00	0	0	0	.000	0	0.00	0	0.00	0	0.00	308
31	Bruns Tegenrot, Taylor	7	6	0.86	0	16	.375	49	7.00	1	1	0.14	1	0	0	.000	15	2.14	3	0.43	0	0.00	260
32	White, Kendall	9	0	0.00	0	0	.000	5	0.56	0	0	0.00	0	55	4	.600	39	4.33	0	0.00	0	0.00	258
33	Parker-Robinson, Nia	2	2	1.00	2	7	.000	0	0.00	0	1	0.50	1	0	0	.000	2	1.00	0	0.00	0	0.00	226
34	Johnson, Willow	9	29	3.22	16	87	.149	0	0.00	1	2	0.22	3	0	0	.000	21	2.33	4	0.44	0	0.00	221
35	Grote, Marin	0	0	0.00	0	0	.000	0	0.00	0	0	0.00	0	0	0	.000	0	0.00	0	0.00	0	0.00	220
36	Brown, Kaz	9	19	2.11	6	38	.342	0	0.00	0	0	0.00	0	1	0	.000	3	0.33	6	0.67	4	0.44	215
37	Blossom, Gabby	4	0	0.00	0	0	.000	0	0.00	0	0	0.00	1	0	0	.000	0	0.00	0	0.00	0	0.00	212
38	Fairs, Erin	8	21	2.63	6	55	.273	1	0.13	0	0	0.00	2	66	7	.470	16	2.00	2	0.25	0	0.00	203
39	Linnehan, Alli	9	19	2.11	14	95	.053	3	0.33	0	1	0.11	0	59	4	.470	12	1.33	5	0.56	0	0.00	167
40	Tomkom, Nootsara	8	0	0.00	0	2	.000	33	4.13	1	1	0.13	1	0	0	.000	16	2.00	0	0.00	0	0.00	145
41	Schlegel, Maria	3	4	1.33	1	22	.136	1	0.33	1	0	0.00	2	20	0	.650	13	4.33	0	0.00	0	0.00	124
42	Bastianelli, Ali	9	5	0.56	6	35	-.029	1	0.11	0	0	0.00	4	0	0	.000	3	0.33	6	0.67	8	0.89	80
43	Abbott, Symone	1	1	1.00	1	5	.000	0	0.00	0	0	0.00	0	0	0	.000	0	0.00	0	0.00	0	0.00	36
44	Mohler, Blake	1	0	0.00	1	1	-1.000	0	0.00	0	0	0.00	0	0	0	.000	0	0.00	0	0.00	0	0.00	28

2023 ATHLETES UNLIMITED VOLLEYBALL STATISTICS | WEEK THREE

RANK	PLAYER	SP	K	K/S	E	ATT.	PCT.	A	A/S	SET E	SA	SA/S	SE	TRA	RE	PCT.	D	D/S	BS	BS/S	BA	BA/S	LPTS
1	Linnehan, Alli	9	37	4.11	4	93	.355	4	0.44	0	1	0.11	3	36	0	.610	21	2.33	7	0.78	0	0.00	1,053
2	McCage, Molly	9	32	3.56	2	51	.588	0	0.00	0	1	0.11	3	2	0	.000	8	0.89	3	0.33	4	0.44	944
3	Edmond, Leah	9	49	5.44	13	111	.324	0	0.00	0	1	0.11	3	77	0	.420	33	3.67	7	0.78	0	0.00	877
4	Vander Weide, Lindsey	9	26	2.89	8	81	.222	2	0.22	0	4	0.44	3	88	2	.520	12	1.33	4	0.44	0	0.00	854
5	Bastianelli, Ali	9	15	1.67	1	35	.400	2	0.22	0	1	0.11	3	0	0	.000	7	0.78	10	1.11	10	1.11	773
6	Tomkom, Nootsara	9	3	0.33	0	4	.750	95	10.56	4	0	0.00	4	2	2	.000	31	3.44	0	0.00	0	0.00	750
7	Collazo, Génesis	9	19	2.11	8	63	.175	1	0.11	0	0	0.00	2	0	0	.000	26	2.89	6	0.67	0	0.00	743
8	Hentz, Morgan	9	0	0.00	0	1	.000	9	1.00	0	0	0.00	0	25	2	.720	32	3.56	0	0.00	0	0.00	701
9	Nuneviller, Brooke	9	40	4.44	9	108	.287	0	0.00	1	2	0.22	3	55	0	.510	27	3.00	1	0.11	0	0.00	583
10	Dixon, Tori	9	9	1.00	2	23	.304	1	0.11	0	0	0.00	1	3	0	.330	3	0.33	10	1.11	7	0.78	572
11	Bruns Tegenrot, Taylor	9	1	0.11	0	4	.250	11	1.22	0	0	0.00	1	0	0	.000	2	0.22	2	0.22	0	0.00	545
11	Valentin-Anderson, Natal	9	6	0.67	0	13	.462	107	11.89	4	0	0.00	3	0	0	.000	30	3.33	1	0.11	0	0.00	545
13	Hilley, Sydney	9	5	0.56	0	15	.333	98	10.89	1	1	0.11	2	0	0	.000	39	4.33	1	0.11	0	0.00	529
14	Hippe, Saskia	8	23	2.88	9	70	.200	0	0.00	0	1	0.13	4	0	0	.000	21	2.63	3	0.38	0	0.00	517
15	Abbott, Symone	1	1	1.00	0	3	.333	0	0.00	0	0	0.00	0	1	0	.000	0	0.00	0	0.00	0	0.00	508
16	Mohler, Blake	1	0	0.00	0	0	.000	0	0.00	0	0	0.00	0	0	0	.000	0	0.00	0	0.00	0	0.00	500
17	Benson, Amanda	9	0	0.00	0	0	.000	6	0.67	0	0	0.00	0	42	1	.600	34	3.78	0	0.00	0	0.00	494
18	Chaussee, Claire	9	44	4.89	19	144	.174	0	0.00	0	0	0.00	4	80	2	.500	24	2.67	1	0.11	0	0.00	420
19	Cruz, Aury	9	22	2.44	12	71	.141	1	0.11	1	1	0.11	2	49	0	.630	41	4.56	1	0.11	0	0.00	416
20	Brown, Kaz	9	17	1.89	7	47	.213	1	0.11	0	1	0.11	0	2	0	.500	2	0.22	2	0.22	7	0.78	395
21	McClendon, Deja	6	6	1.00	3	28	.107	1	0.17	1	0	0.00	0	30	2	.500	18	3.00	1	0.17	0	0.00	389
22	White, Kendall	9	0	0.00	0	0	.000	8	0.89	0	0	0.00	0	52	1	.500	30	3.33	0	0.00	0	0.00	378
23	Vélez Agosto, Nomaris	9	0	0.00	0	0	.000	7	0.78	0	0	0.00	0	57	0	.470	38	4.22	0	0.00	0	0.00	371
24	Johnson, Willow	9	25	2.78	15	79	.127	0	0.00	0	0	0.00	2	0	0	.000	16	1.78	3	0.33	0	0.00	360
25	Childress, Alisha	9	2	0.22	0	9	.222	90	10.00	2	4	0.44	1	0	0	.000	21	2.33	1	0.11	0	0.00	359
26	Gonzaga, Sassá	8	1	0.13	0	7	.143	3	0.38	0	0	0.00	0	28	0	.610	26	3.25	0	0.00	0	0.00	355
27	Willis, Emma	8	15	1.88	5	32	.313	1	0.13	0	1	0.13	2	1	0	.000	12	1.50	1	0.13	2	0.25	313
28	Watson, Karis	4	9	2.25	2	16	.438	2	0.50	0	1	0.25	1	2	1	.000	2	0.50	2	0.50	2	0.50	300
29	Fairs, Erin	0	0	0.00	0	0	.000	0	0.00	0	0	0.00	0	0	0	.000	0	0.00	0	0.00	0	0.00	280
29	Grote, Marin	0	0	0.00	0	0	.000	0	0.00	0	0	0.00	0	0	0	.000	0	0.00	0	0.00	0	0.00	280
29	Santos, Ray	1	0	0.00	0	0	.000	0	0.00	0	0	0.00	0	0	0	.000	0	0.00	0	0.00	0	0.00	280
32	Hart, Danielle	6	14	2.33	5	31	.290	3	0.50	0	1	0.17	3	4	0	.250	3	0.50	2	0.33	2	0.33	268
33	Rosenthal, Jenna	9	18	2.00	7	46	.239	1	0.11	1	2	0.22	1	4	1	.500	6	0.67	4	0.44	3	0.33	261
34	Pressley, Yossiana	6	16	2.67	10	56	.107	0	0.00	0	0	0.00	2	32	3	.250	14	2.33	4	0.67	0	0.00	230
35	Reed, Nia	7	12	1.71	10	52	.038	1	0.14	0	0	0.00	0	0	0	.000	19	2.71	3	0.43	0	0.00	228
36	Caffey, Kayla	7	12	1.71	4	23	.348	0	0.00	0	0	0.00	3	2	1	.000	3	0.43	5	0.71	1	0.14	209
37	Blossom, Gabby	1	0	0.00	0	0	.000	0	0.00	0	0	0.00	0	0	0	.000	0	0.00	0	0.00	0	0.00	180
37	Schlegel, Maria	1	0	0.00	0	0	.000	0	0.00	0	0	0.00	0	0	0	.000	0	0.00	0	0.00	0	0.00	180
39	Lukes, Katie	8	14	1.75	14	61	.000	1	0.13	0	0	0.00	0	43	3	.370	3	0.38	2	0.25	0	0.00	160
40	Fanning, Shelly	5	3	1.00	0	8	.500	1	0.00	0	0	1.00	1	0	0	.000	1	0.00	0	0.00	2	1.00	146
41	Edelman-Cagliari, Nicole	2	0	0.00	0	0	.000	10	0.00	0	0	0.00	0	0	0	.000	2	0.00	0	0.00	0	0.00	140
42	Parker-Robinson, Nia	2	5	0.00	3	12	.000	0	0.00	0	0	0.00	2	0	0	.000	1	0.00	0	0.00	0	0.00	113
43	Stalzer, Lindsay	4	1	1.60	2	17	-.030	0	0.00	0	0	0.00	2	7	2	.140	4	0.60	0	0.20	0	0.00	86

2023 ATHLETES UNLIMITED VOLLEYBALL STATISTICS | WEEK FOUR

RANK	PLAYER	SP	K	K/S	E	ATT.	PCT.	A	A/S	SET E	SA	SA/S	SE	TRA	RE	PCT.	D	D/S	BS	BS/S	BA	BA/S	LPTS
1	Linnehan, Alli	9	38	4.22	5	100	.330	0	0.00	0	3	0.33	1	49	1	.430	36	4.00	4	0.44	0	0.00	1,010
2	Edmond, Leah	9	44	4.89	15	107	.271	1	0.11	0	0	0.00	0	57	3	.600	31	3.44	4	0.44	0	0.00	792
3	Nuneviller, Brooke	9	38	4.22	9	109	.266	4	0.44	0	1	0.11	1	53	0	.580	33	3.67	1	0.11	0	0.00	755
4	Johnson, Willow	9	42	4.67	13	95	.305	2	0.22	0	1	0.11	6	0	0	.000	18	2.00	1	0.11	0	0.00	708
5	Chaussee, Claire	9	53	5.89	15	147	.259	3	0.33	0	2	0.22	11	82	2	.540	26	2.89	3	0.33	0	0.00	640
6	Tomkom, Nootsara	9	2	0.22	0	12	.167	102	11.33	2	0	0.00	2	0	0	.000	26	2.89	2	0.22	0	0.00	632
6	Vélez Agosto, Nomaris	9	0	0.00	0	0	.000	17	1.89	0	0	0.00	0	48	2	.670	43	4.78	0	0.00	0	0.00	632
8	Brown, Kaz	9	22	2.44	3	43	.442	1	0.11	0	0	0.00	2	3	1	.330	4	0.44	11	1.22	6	0.67	599
9	Fairs, Erin	9	14	1.56	8	47	.128	4	0.44	0	3	0.33	4	69	4	.430	32	3.56	3	0.33	0	0.00	592
10	De La Cruz, Bethania	6	26	4.33	9	62	.274	2	0.33	0	2	0.33	3	69	2	.510	16	2.67	2	0.33	0	0.00	547
10	McCage, Molly	9	22	2.44	9	51	.255	0	0.00	0	1	0.11	4	4	0	.750	5	0.56	6	0.67	3	0.33	547
12	Pressley, Yossiana	9	33	3.67	13	78	.256	1	0.11	1	1	0.11	4	24	1	.500	29	3.22	5	0.56	0	0.00	538
13	Vander Weide, Lindsey	9	29	3.22	11	98	.184	2	0.22	0	2	0.22	1	70	7	.460	19	2.11	3	0.33	0	0.00	524
14	Valentin-Anderson, Natal	9	4	0.44	2	10	.200	105	11.67	1	2	0.22	4	2	0	.000	23	2.56	2	0.22	0	0.00	523
15	Hentz, Morgan	9	0	0.00	0	0	.000	7	0.78	1	0	0.00	0	33	0	.640	42	4.67	0	0.00	0	0.00	502
16	Hilley, Sydney	9	6	0.67	1	22	.227	113	12.56	1	5	0.56	2	1	0	.000	17	1.89	4	0.44	0	0.00	491
17	Collazo, Génesis	9	10	1.11	5	42	.119	1	0.11	1	3	0.33	2	2	0	.500	28	3.11	3	0.33	0	0.00	482
18	Childress, Alisha	8	4	0.50	2	12	.167	92	11.50	6	0	0.00	1	0	0	.000	21	2.63	6	0.75	0	0.00	476
19	White, Kendall	9	0	0.00	0	0	.000	9	1.00	0	0	0.00	0	54	4	.440	35	3.89	0	0.00	0	0.00	462
20	Dixon, Tori	9	15	1.67	3	34	.353	0	0.00	1	0	0.00	1	1	0	1.000	3	0.33	6	0.67	5	0.56	423
21	Bastianelli, Ali	9	16	1.78	3	26	.500	1	0.11	0	2	0.22	5	2	0	.000	3	0.33	3	0.33	5	0.56	418
22	Fanning, Shelly	5	5	1.00	2	8	.375	0	0.00	0	0	0.00	0	0	0	.000	3	0.60	0	0.00	0	0.00	391
23	Watson, Karis	7	12	1.71	5	29	.241	1	0.14	0	0	0.00	4	1	0	.000	2	0.29	0	0.00	6	0.86	387
24	Stalzer, Lindsay	4	10	2.50	2	40	.200	1	0.25	0	0	0.00	1	17	0	.710	10	2.50	0	0.00	0	0.00	383
25	Bruns Tegenrot, Taylor	7	2	0.29	1	4	.250	6	0.86	0	0	0.00	0	0	0	.000	1	0.14	0	0.00	0	0.00	375
26	Benson, Amanda	9	0	0.00	0	0	.000	3	0.33	0	0	0.00	0	39	1	.640	30	3.33	0	0.00	0	0.00	367
27	Rosenthal, Jenna	8	12	1.50	4	30	.267	0	0.00	0	0	0.00	2	2	0	.500	14	1.75	6	0.75	3	0.38	362
28	Parker-Robinson, Nia	2	0	0.00	0	0	.000	0	0.00	0	0	0.00	0	0	0	.000	0	0.00	0	0.00	0	0.00	360
29	Lukes, Katie	3	3	1.00	4	16	-.063	0	0.00	0	0	0.00	1	15	1	.330	1	0.33	1	0.33	0	0.00	343
30	Hippe, Saskia	9	23	2.56	16	78	.090	3	0.33	0	1	0.11	10	0	0	.000	19	2.11	3	0.33	0	0.00	330
31	Mohler, Blake	5	4	0.80	2	14	.143	0	0.00	0	0	0.00	1	2	0	.500	5	1.00	3	0.60	2	0.40	327
32	Willis, Emma	9	16	1.78	4	39	.308	0	0.00	0	0	0.00	1	2	0	.500	4	0.44	2	0.22	10	1.11	318
33	Grote, Marin	5	6	1.20	3	12	.250	0	0.00	0	4	0.80	3	0	0	.000	0	0.00	1	0.20	1	0.20	310
34	Blossom, Gabby	3	0	0.00	0	1	.000	15	5.00	0	0	0.00	0	0	0	.000	4	1.33	0	0.00	0	0.00	295
35	Edelman-Cagliari, Nicole	5	1	0.20	1	10	.000	0	0.00	0	0	0.00	0	0	0	.000	8	1.60	4	0.80	0	0.00	284
36	Abbott, Symone	0	0	0.00	0	0	.000	0	0.00	0	0	0.00	0	0	0	.000	0	0.00	0	0.00	0	0.00	280
36	Hart, Danielle	0	0	0.00	0	0	.000	0	0.00	0	0	0.00	0	0	0	.000	0	0.00	0	0.00	0	0.00	280
38	Schlegel, Maria	2	1	0.50	1	2	.000	1	0.50	0	0	0.00	0	1	0	1.000	0	0.00	0	0.00	0	0.00	279
39	Gonzaga, Sassá	2	0	0.00	0	0	.000	0	0.00	0	0	0.00	0	8	1	.130	4	2.00	0	0.00	0	0.00	270
40	Santos, Ray	7	0	0.00	0	0	.000	0	0.00	0	0	0.00	2	0	0	.000	0	0.00	0	0.00	0	0.00	264
41	Cruz, Aury	7	5	0.71	5	26	.000	2	0.29	0	0	0.00	2	39	3	.440	15	2.14	1	0.14	0	0.00	243
42	Caffey, Kayla	1	1	1.00	1	3	.000	0	0.00	0	0	0.00	0	0	0	.000	0	0.00	1	1.00	2	2.00	192
43	McClendon, Deja	3	0	0.00	1	5	-.200	0	0.00	0	0	0.00	1	7	0	.140	5	1.67	0	0.00	0	0.00	187
44	Reed, Nia	0	0	0.00	0	0	.000	0	0.00	0	0	0.00	0	0	0	.000	0	0.00	0	0.00	0	0.00	180

2023 ATHLETES UNLIMITED VOLLEYBALL CAPTAIN WEEK-BY-WEEK RESULTS

WEEK ONE: OCTOBER 6-9

TEAM DE LA CRUZ			TEAM VALENTIN-ANDERSON			TEAM NOOTSARA			TEAM EDMOND		
Captain: Bethania De La Cruz			Captain: Natalia Valentin-Anderson			Captain: Nootsara Tomkom			Captain: Leah Edmond		
Facilitator: Kayla Banwarth			Facilitator: Brandon Directo			Facilitator: Stephen Gbur			Facilitator: Dave Rubio		
Date	Opponent	Score	Date	Opponent	Score	Date	Opponent	Score	Date	Opponent	Score
10/6	Team Edmond	L, 77-73	10/6	Team Nootsara	L, 75-63	10/6	Team Valentin-Anderson	W, 75-63	10/6	Team De La Cruz	W, 77-73
10/8	Team Nootsara	L, 70-69	10/8	Team Edmond	L, 75-58	10/8	Team De La Cruz	W, 70-69	10/8	Team Valentin-Anderson	W, 75-58
10/9	Team Valentin-Anderson	W, 74-72 (GS)	10/9	Team De La Cruz	L, 74-72 (GS)	10/9	Team Edmond	L, 75-44	10/9	Team Nootsara	W, 75-44

WEEK TWO: OCTOBER 13-16

TEAM EDMOND			TEAM LINNEHAN			TEAM HENTZ			TEAM HILLEY		
Captain: Leah Edmond			Captain: Alli Linnehan			Captain: Morgan Hentz			Captain: Sydney Hilley		
Facilitator: Brandon Directo			Facilitator: Stephen Gbur			Facilitator: Dave Rubio			Facilitator: Kayla Banwarth		
Date	Opponent	Score	Date	Opponent	Score	Date	Opponent	Score	Date	Opponent	Score
10/13	Team Hilley	L, 74-62	10/13	Team Hentz	L, 76-51	10/13	Team Linnehan	W, 76-51	10/13	Team Edmond	W, 74-62
10/15	Team Hentz	L, 73-64	10/15	Team Hilley	L, 75-53	10/15	Team Edmond	W, 73-64	10/15	Team Linnehan	W, 75-53
10/16	Team Linnehan	W, 69-63	10/16	Team Edmond	L, 69-63	10/16	Team Hilley	W, 78-55	10/16	Team Hentz	L, 78-55

WEEK THREE: OCTOBER 20-23

TEAM EDMOND			TEAM HENTZ			TEAM HILLEY			TEAM ROSENTHAL		
Captain: Leah Edmond			Captain: Morgan Hentz			Captain: Sydney Hilley			Captain: Jenna Rosenthal		
Facilitator: Stephen Gbur			Facilitator: Dave Rubio			Facilitator: Kayla Banwarth			Facilitator: Brandon Directo		
Date	Opponent	Score	Date	Opponent	Score	Date	Opponent	Score	Date	Opponent	Score
10/20	Team Rosenthal	W, 71-68	10/20	Team Hilley	W, 75-55	10/20	Team Hentz	L, 75-55	10/20	Team Edmond	L, 71-68
10/22	Team Hilley	W, 72-60	10/22	Team Rosenthal	W, 73-60	10/22	Team Edmond	L, 72-60	10/22	Team Hentz	L, 73-60
10/23	Team Hentz	L, 75-47	10/23	Team Edmond	W, 75-47	10/23	Team Rosenthal	W, 72-59	10/23	Team Hilley	L, 72-59

WEEK FOUR: OCTOBER 27-30

TEAM EDMOND			TEAM HENTZ			TEAM LINNEHAN			TEAM HILLEY		
Captain: Leah Edmond			Captain: Morgan Hentz			Captain: Alli Linnehan			Captain: Sydney Hilley		
Facilitator: Dave Rubio			Facilitator: Kayla Banwarth			Facilitator: Brandon Directo			Facilitator: Stephen Gbur		
Date	Opponent	Score	Date	Opponent	Score	Date	Opponent	Score	Date	Opponent	Score
10/27	Team Hilley	W, 73-71	10/27	Team Linnehan	L, 71-68	10/27	Team Hentz	W, 71-68	10/27	Team Edmond	L, 73-71
10/29	Team Linnehan	L, 75-64	10/29	Team Hilley	W, 79-68	10/29	Team Edmond	W, 75-64	10/29	Team Hentz	L, 79-68
10/30	Team Hentz	W, 70-63	10/30	Team Edmond	L, 70-63	10/30	Team Hilley	L, 71-66	10/30	Team Linnehan	W, 71-66

WEEK FIVE: NOVEMBER 3-6

TEAM EDMOND			TEAM LINNEHAN			TEAM HENTZ			TEAM NUNEVILLER		
Captain: Leah Eedmond			Captain: Alli Linnehan			Captain: Morgan Hentz			Captain: Brooke Nuneviller		
Facilitator: Kayla Banwarth			Facilitator: Brandon Directo			Facilitator: Stephen Gbur			Facilitator: Dave Rubio		
Date	Opponent	Score	Date	Opponent	Score	Date	Opponent	Score	Date	Opponent	Score
11/3	Team Nuneviller		11/3	Team Hentz		11/3	Team Linnehan		11/3	Team Edmond	
11/5	Team Hentz		11/5	Team Nuneviller		11/5	Team Edmond		11/5	Team Linnehan	
11/6	Team Linnehan		11/6	Team Edmond		11/6	Team Nuneviller		11/6	Team Hentz	

2023 ATHLETES UNLIMITED LEADERBOARD POSITION BY DATE

Player	10/6	10/8	10/9	10/13	10/15	10/16	10/20	10/22	10/23	10/27	10/29	10/30	11/3	11/5	11/6	High	Low
Abbott, Symone	35	35	39	41	42	42	41	40	37	37	39	39				35	42
Adekunle, Anota	32	32	36	40	41	43	44	45	45	45	45	45				32	45
Bastianelli, Ali	14	9	18	26	33	35	27	24	19	17	21	20				9	35
Benson, Amanda	33	37	34	33	20	28	22	20	22	24	25	25				20	37
Blossom, Gabby	34	33	37	38	40	39	40	41	41	42	42	42				33	42
Brown, Kaz	38	38	32	35	36	38	34	30	33	31	33	27				27	38
Bruns Tegenrot, Taylor	21	21	15	22	32	27	24	23	20	22	22	24				15	32
Caffey, Kayla	31	28	22	23	15	20	25	26	29	29	32	33				15	33
Chaussee, Claire	2	4	11	6	5	6	4	6	9	5	8	7				2	11
Childress, Alisha	26	22	16	19	22	18	17	21	21	25	17	18				16	26
Collazo, Génesis	16	8	6	9	11	14	11	10	11	10	10	11				6	16
Cruz, Aury	9	13	19	12	9	13	15	16	14	16	19	22				9	22
De La Cruz, Bethania	6	11	7	3	1	1	3	3	5	9	5	5				1	11
Dixon, Tori	37	39	35	30	19	24	18	14	18	19	16	17				14	39
Edelman-Cagliari, Nicole	17	23	29	29	26	32	35	36	36	38	41	38				17	41
Edmond, Leah	10	2	1	1	4	2	1	1	1	1	1	1				1	10
Fairs, Erin	36	36	38	36	38	40	37	37	39	35	31	31				31	40
Fanning, Shelly	41	41	42	42	39	37	38	38	40	40	38	40				37	42
Gonzaga, Sassá	18	24	30	32	27	31	33	35	30	33	30	32				18	35
Grote, Marin	19	25	31	34	37	36	36	34	35	39	37	36				19	39
Hart, Danielle	11	5	5	5	6	9	13	15	16	15	20	19				5	20
Hentz, Morgan	5	6	3	2	2	3	2	2	2	2	3	3				2	6
Hilley, Sydney	7	3	4	4	3	4	5	8	4	4	6	6				3	8
Hippe, Saskia	29	31	28	18	17	10	8	7	13	13	13	14				7	31
Johnson, Willow	20	10	9	16	23	23	29	31	26	21	15	15				9	31
Linnehan, Alli	1	1	2	8	12	11	9	5	3	3	2	2				1	12
Lukes, Katie	40	44	43	39	34	34	39	39	38	36	35	37				34	44
McCage, Molly	8	17	24	28	29	17	14	13	6	6	7	8				6	29
McClendon, Deja	22	19	12	24	31	22	19	22	23	26	28	29				12	31
Mohler, Blake				45	45	45	43	42	42	41	40	41				40	45
Nuneviller, Brooke	27	30	25	15	8	7	10	9	7	7	4	4				4	30
Parker-Robinson, Nia	42	42	44	43	43	41	42	43	43	43	43	43				41	44
Pressley, Yossiana	13	16	27	14	13	16	21	18	25	23	24	21				13	27
Reed, Nia	4	12	20	21	18	29	28	29	31	32	34	34				4	34
Rosenthal, Jenna	15	14	8	7	7	5	6	11	12	12	14	13				5	15
Santos, Ray	42	43	41	37	35	33	32	32	34	34	36	35				32	43
Schlegel, Maria	39	40	40	44	44	44	45	44	44	44	44	44				39	45
Stalzer, Lindsay	42	29	26	25	21	19	26	28	32	30	29	30				19	42
Tomkom, Nootsara	3	7	10	17	24	30	20	17	15	14	12	12				3	30
Valentin-Anderson, Natalia	24	27	23	11	10	8	7	4	10	11	11	10				4	27
Vander Weide, Lindsey	25	18	17	13	16	15	12	12	8	8	9	9				8	25
Vélez Agosto, Nomaris	28	26	21	27	28	21	23	25	24	20	18	16				16	28
Watson, Karis	30	34	33	31	30	25	31	33	28	28	27	28				25	34
White, Kendall	12	15	14	20	25	26	30	27	27	27	26	26				12	30
Willis, Emma	23	20	13	10	14	12	16	19	17	18	23	23				10	23

2023 ATHLETES UNLIMITED LEADERBOARD POINTS BY DATE

Player	10/6	10/8	10/9	10/13	10/15	10/16	10/20	10/22	10/23	10/27	10/29	10/30	11/3	11/5	11/6	High	Low
Abbott, Symone	40	80	100	0	-4	40	180	148	180	100	40	140				180	-4
Adekunle, Anota	56	80	100													100	56
Bastianelli, Ali	211	253	11	61	9	10	307	240	226	188	83	147				307	9
Benson, Amanda	48	71	129	200	273	22	223	214	57	146	52	169				273	22
Blossom, Gabby	45	80	100	40	32	140	0	40	140	47	180	68				180	0
Brown, Kaz	24	41	214	34	69	112	186	212	-3	177	88	334				334	-3
Bruns Tegenrot, Taylor	140	172	180	66	22	172	185	159	189	142	153	80				189	22
Caffey, Kayla	62	158	187	140	309	0	35	73	101	80	12	100				309	0
Chaussee, Claire	393	160	25	425	352	42	217	101	102	347	97	196				425	25
Childress, Alisha	129	174	182	92	91	269	152	88	119	77	336	63				336	63
Collazo, Génesis	189	274	282	96	102	118	296	211	236	195	112	175				296	96
Cruz, Aury	239	195	5	276	295	63	122	130	164	66	77	100				295	5
De La Cruz, Bethania	241	182	306	430	324	391	40	40	40	40	336	171				430	40
Dixon, Tori	28	41	173	214	278	47	278	269	25	127	237	59				278	25
Edelman-Cagliari, Nicole	180	107	30	140	180	0	40	60	40	80	5	199				199	0
Edmond, Leah	226	390	412	189	179	341	300	390	187	255	200	337				412	179
Fairs, Erin	40	80	103	70	27	106	140	140	0	222	259	111				259	0
Fanning, Shelly	10	0	80	117	91	204	66	40	40	140	145	106				204	0
Gonzaga, Sassá	180	100	29	140	180	14	40	102	213	50	180	40				213	14
Grote, Marin	180	100	6	40	40	140	140	140	0	40	180	90				180	0
Hart, Danielle	212	340	265	202	180	0	49	79	140	100	40	140				340	0
Hentz, Morgan	268	262	351	305	262	268	235	211	255	112	277	113				351	112
Hilley, Sydney	245	326	309	235	282	69	80	109	340	228	88	175				340	69
Hippe, Saskia	65	88	168	266	176	361	344	211	-38	71	201	58				361	-38
Johnson, Willow	155	275	160	41	32	148	18	51	291	291	339	78				339	18
Linnehan, Alli	391	286	246	-14	25	156	345	299	409	395	315	300				409	-14
Lukes, Katie	21	-25	90	166	183	145	-37	54	143	141	140	62				183	-37
McCage, Molly	255	122	-3	98	144	332	254	290	400	221	174	152				400	-3
McClendon, Deja	140	180	180	40	40	249	195	149	45	80	7	100				249	7
Mohler, Blake				0	-12	40	180	140	180	98	189	40				189	-12
Nuneviller, Brooke	125	35	204	284	417	240	90	192	301	217	417	121				417	35
Parker-Robinson, Nia	0	3	80	40	40	146	40	33	40	140	140	80				146	0
Pressley, Yossiana	225	156	-22	294	278	39	0	228	2	191	58	289				294	-22
Reed, Nia	313	129	-9	140	180	-12	95	68	65	80	0	100				313	-12
Rosenthal, Jenna	204	223	248	254	211	283	88	45	128	128	67	167				283	45
Santos, Ray	0	0	92	180	140	185	140	140	0	100	32	132				185	0
Schlegel, Maria	22	-4	80	14	0	110	0	40	140	100	39	140				140	-4
Stalzer, Lindsay	0	180	180	180	140	180	28	40	18	150	180	53				180	0
Tomkom, Nootsara	322	210	47	46	37	62	269	210	271	212	262	158				322	37
Valentin-Anderson, Natalia	140	99	161	322	261	277	214	255	76	177	110	236				322	76
Vander Weide, Lindsey	140	190	151	180	140	180	348	194	312	261	75	188				348	75
Vélez Agosto, Nomaris	75	176	163	86	126	213	122	130	119	259	224	149				259	75
Watson, Karis	64	58	152	180	140	180	0	54	246	128	179	80				246	0
White, Kendall	227	194	79	75	84	99	69	123	186	148	109	205				227	69
Willis, Emma	140	180	180	222	184	174	43	57	213	101	63	154				222	43

2023 ATHLETES UNLIMITED VOLLEYBALL DRAFT RESULTS (BY TEAM ORDER)

WEEK ONE: OCTOBER 6-9

ROUND	TEAM DE LA CRUZ (GOLD)	TEAM VALENTIN-ANDERSON (ORANGE)	TEAM NOOTSARA (BLUE)	TEAM EDMOND (PURPLE)
Captain	Bethania De La Cruz (OH)	Natalia Valentin-Anderson (S)	Nootsara Tomkom (S)	Leah Edmond (OH)
1	Alisha Childress (S)	Brooke Nuneviller (OH)	Yossiana Pressley (OH)	Alli Linnehan (OH)
2	Willow Johnson (OPP)	Saskia Hippe (OPP)	Molly McCage (MB)	Danielle Hart (MB)
3	Anota Adekunle (MB)	Shelly Fanning (MB)	Claire Chaussee (OH)	Morgan Hentz (L)
4	Nomaris Vélez Agosto (L)	Katie Lukes (OH)	Ali Bastianelli (MB)	Sydney Hilley (S)
5	Lindsey Vander Weide (OH)	Tori Dixon (MB)	Kendall White (L)	Jenna Rosenthal (MB)
6	Karis Watson (MB)	Maria Schlegel (OH)	Nia Reed (OPP)	Génesis Collazo (OPP)
7	Gabby Blossom (S)	Kaz Brown (MB)	Aury Cruz (OH)	Taylor Bruns Tegenrot (S)
8	Erin Fairs (OH)	Nia Parker-Robinson (OH)	Nicole Edelman-Cagliari (S)	Deja McClendon (OH)
9	Kayla Caffey (MB)	Amanda Benson (L)	Sassá Gonzaga (OH)	Emma Willis (MB)
10	Symone Abbott (OPP)	Ray Santos (S)	Marin Grote (MB)	Lindsay Stalzer (OH)

WEEK TWO: OCTOBER 13-16

ROUND	TEAM EDMOND (GOLD)	TEAM LINNEHAN (ORANGE)	TEAM HENTZ (BLUE)	TEAM HILLEY (PURPLE)
Captain	Leah Edmond (OH)	Alli Linnehan (OH)	Morgan Hentz (L)	Sydney Hilley (S)
1	Alisha Childress (S)	Willow Johnson (OPP)	Bethania De La Cruz (OH)	Claire Chaussee (OH)
2	Molly McCage (MB)	Nootsara Tomkom (S)	Brooke Nuneviller (OH)	Yossiana Pressley (OH)
3	Génesis Collazo (OPP)	Ali Bastianelli (MB)	Jenna Rosenthal (MB)	Danielle Hart (MB)
4	Nomaris Vélez Agosto (L)	Kendall White (L)	Natalia Valentin-Anderson (S)	Aury Cruz (OH)
5	Shelly Fanning (MB)	Kaz Brown (MB)	Saskia Hippe (OPP)	Tori Dixon (MB)
6	Katie Lukes (OH)	Maria Schlegel (OH)	Emma Willis (MB)	Nia Reed (OPP)
7	Deja McClendon (OH)	Taylor Bruns Tegenrot (S)	Karis Watson (MB)	Sassá Gonzaga (OH)
8	Gabby Blossom (S)	Erin Fairs (OH)	Lindsey Vander Weide (OH)	Nicole Edelman-Cagliari (S)
9	Nia Parker-Robinson (OH)	Symone Abbott (OPP)	Lindsay Stalzer (OH)	Kayla Caffey (MB)
10	Marin Grote (MB)	-	Ray Santos (S)	Amanda Benson (L)

Note: Blake Mohler was added to the roster on October 11 and assigned to Team Linnehan

WEEK THREE: OCTOBER 20-23

ROUND	TEAM EDMOND (GOLD)	TEAM HENTZ (ORANGE)	TEAM HILLEY (BLUE)	TEAM ROSENTHAL (PURPLE)
Captain	Leah Edmond (OH)	Morgan Hentz (L)	Sydney Hilley (S)	Jenna Rosenthal (MB)
1	Natalia Valentin-Anderson (S)	Alli Linnehan (OH)	Brooke Nuneviller (OH)	Claire Chaussee (OH)
2	Saskia Hippe (OPP)	Molly McCage (MB)	Willow Johnson (OPP)	Alisha Childress (S)
3	Kaz Brown (MB)	Ali Bastianelli (MB)	Danielle Hart (MB)	Aury Cruz (OH)
4	Yossiana Pressley (OH)	Lindsey Vander Weide (OH)	Katie Lukes (OH)	Nomaris Vélez Agosto (L)
5	Tori Dixon (MB)	Nootsara Tomkom (S)	Emma Willis (MB)	Nia Reed (OPP)
6	Deja McClendon (OH)	Génesis Collazo (OPP)	Sassá Gonzaga (OH)	Lindsay Stalzer (OH)
7	Amanda Benson (L)	Taylor Bruns Tegenrot (S)	Karis Watson (MB)	Shelly Fanning (MB)
8	Erin Fairs (OH)	Symone Abbott (OPP)	Gabby Blossom (S)	Nia Parker-Robinson (OH)
9	Ray Santos (S)	Blake Mohler (MB)	Maria Schlegel (OH)	Kayla Caffey (MB)
10	Marin Grote (MB)	-	Kendall White (L)	Nicole Edelman-Cagliari (S)

Note: Bethania De La Cruz was not available for selection due to national team commitments at Pan American Games.

WEEK FOUR: OCTOBER 27-30

ROUND	TEAM EDMOND (GOLD)	TEAM HENTZ (ORANGE)	TEAM LINNEHAN (BLUE)	TEAM HILLEY (PURPLE)
Captain	Leah Edmond (OH)	Morgan Hentz (L)	Alli Linnehan (OH)	Sydney Hilley (S)
1	Natalia Valentin-Anderson (S)	Brooke Nuneviller (OH)	Molly McCage (MB)	Claire Chaussee (OH)
2	Lindsey Vander Weide (OH)	Bethania De La Cruz (OH)	Nootsara Tomkom (S)	Yossiana Pressley (OH)
3	Ali Bastianelli (MB)	Tori Dixon (MB)	Willow Johnson (OPP)	Jenna Rosenthal (MB)
4	Génesis Collazo (OPP)	Saskia Hippe (OPP)	Karis Watson (MB)	Aury Cruz (OH)
5	Kaz Brown (MB)	Blake Mohler (MB)	Katie Lukes (OH)	Emma Willis (MB)
6	Kendall White (L)	Alisha Childress (S)	Nomaris Vélez Agosto (L)	Kayla Caffey (MB)
7	Symone Abbott (OPP)	Sassá Gonzaga (OH)	Taylor Bruns Tegenrot (S)	Deja McClendon (OH)
8	Ray Santos (S)	Lindsay Stalzer (OH)	Shelly Fanning (MB)	Nia Reed (OPP)
9	Maria Schlegel (OH)	Marin Grote (MB)	Nia Parker-Robinson (OH)	Nicole Edelman-Cagliari (S)
10	Danielle Hart (MB)	Gabby Blossom (S)	Erin Fairs (OH)	Amanda Benson (L)

WEEK FIVE: NOVEMBER 3-6

ROUND	TEAM EDMOND (GOLD)	TEAM LINNEHAN (ORANGE)	TEAM HENTZ (BLUE)	TEAM NUNEVILLER (PURPLE)
Captain	Leah Edmond (OH)	Alli Linnehan (OH)	Morgan Hentz (L)	Brooke Nuneviller (OH)
1	Natalia Valentin-Anderson (S)	Molly McCage (MB)	Claire Chaussee (OH)	Bethania De La Cruz (OH)
2	Lindsey Vander Weide (OH)	Nootsara Tomkom (S)	Yossiana Pressley (OH)	Sydney Hilley (S)
3	Génesis Collazo (OPP)	Willow Johnson (OPP)	Ali Bastianelli (MB)	Jenna Rosenthal (MB)
4	Kaz Brown (MB)	Tori Dixon (MB)	Emma Willis (MB)	Kayla Caffey (MB)
5	Karis Watson (MB)	Nomaris Vélez Agosto (L)	Taylor Bruns Tegenrot (S)	Saskia Hippe (OPP)
6	Kendall White (L)	Erin Fairs (OH)	Symone Abbott (OPP)	Marin Grote (MB)
7	Sassa Gonzaga (OH)	Alisha Childress (S)	Deja McClendon (OH)	Nicole Edelman-Cagliari (S)
8	Shelly Fanning (MB)	Aury Cruz (OH)	Nia Parker-Robinson (OH)	Lindsay Stalzer (OH)
9	Ray Santos (S)	Katie Lukes (OH)	Blake Mohler (MB)	Maria Schlegel (OH)
10	Nia Reed (OPP)	Danielle Hart (MB)	Gabby Blossom (S)	Amanda Benson (L)

2023 ATHLETES UNLIMITED VOLLEYBALL DRAFT RESULTS (BY OVERALL ORDER)

DRAFT PICK	Week 1	Week 2	Week 3	Week 4	Week 5
Captain	Bethania De La Cruz (OH)	Leah Edmond (OH)	Leah Edmond (OH)	Leah Edmond (OH)	Leah Edmond (OH)
Captain	Natalia Valentin-Anderson (S)	Alli Linnehan (OH)	Morgan Hentz (L)	Morgan Hentz (L)	Alli Linnehan (OH)
Captain	Nootsara Tomkom (S)	Morgan Hentz (L)	Sydney Hilley (S)	Alli Linnehan (OH)	Morgan Hentz (L)
Captain	Leah Edmond (OH)	Sydney Hilley (S)	Jenna Rosenthal (MB)	Sydney Hilley (S)	Brooke Nuneviller (OH)
1	Alli Linnehan (OH)	Claire Chaussee (OH)	Claire Chaussee (OH)	Claire Chaussee (OH)	Bethania De La Cruz (OH)
2	Yossiana Pressley (OH)	Bethania De La Cruz (OH)	Brooke Nuneviller (OH)	Molly McCage (MB)	Claire Chaussee (OH)
3	Brooke Nuneviller (OH)	Willow Johnson (OPP)	Alli Linnehan (OH)	Brooke Nuneviller (OH)	Molly McCage (MB)
4	Alisha Childress (S)	Alisha Childress (S)	Natalia Valentin-Anderson (S)	Natalia Valentin-Anderson (S)	Natalia Valentin-Anderson (S)
5	Willow Johnson (OPP)	Molly McCage (MB)	Saskia Hippe (OPP)	Lindsey Vander Weide (OH)	Lindsey Vander Weide (OH)
6	Saskia Hippe (OPP)	Nootsara Tomkom (S)	Molly McCage (MB)	Bethania De La Cruz (OH)	Nootsara Tomkom (S)
7	Molly McCage (MB)	Brooke Nuneviller (OH)	Willow Johnson (OPP)	Nootsara Tomkom (S)	Yossiana Pressley (OH)
8	Danielle Hart (MB)	Yossiana Pressley (OH)	Alisha Childress (S)	Yossiana Pressley (OH)	Sydney Hilley (S)
9	Morgan Hentz (L)	Danielle Hart (MB)	Aury Cruz (OH)	Jenna Rosenthal (MB)	Jenna Rosenthal (MB)
10	Claire Chaussee (OH)	Jenna Rosenthal (MB)	Danielle Hart (MB)	Willow Johnson (OPP)	Ali Bastianelli (MB)
11	Shelly Fanning (MB)	Ali Bastianelli (MB)	Ali Bastianelli (MB)	Tori Dixon (MB)	Willow Johnson (OPP)
12	Anota Adekunle (MB)	Génesis Collazo (OPP)	Kaz Brown (MB)	Ali Bastianelli (MB)	Génesis Collazo (OPP)
13	Nomaris Vélez Agosto (L)	Nomaris Vélez Agosto (L)	Yossiana Pressley (OH)	Génesis Collazo (OPP)	Kaz Brown (MB)
14	Katie Lukes (OH)	Kendall White (L)	Lindsey Vander Weide (OH)	Saskia Hippe (OPP)	Tori Dixon (MB)
15	Ali Bastianelli (MB)	Natalia Valentin-Anderson (S)	Katie Lukes (OH)	Karis Watson (MB)	Emma Willis (MB)
16	Sydney Hilley (S)	Aury Cruz (OH)	Nomaris Vélez Agosto (L)	Aury Cruz (OH)	Kayla Caffey (MB)
17	Jenna Rosenthal (MB)	Tori Dixon (MB)	Nia Reed (OPP)	Emma Willis (MB)	Saskia Hippe (OPP)
18	Kendall White (L)	Saskia Hippe (OPP)	Emma Willis (MB)	Katie Lukes (OH)	Taylor Bruns Tegenrot (S)
19	Tori Dixon (MB)	Kaz Brown (MB)	Nootsara Tomkom (S)	Blake Mohler (MB)	Nomaris Vélez Agosto (L)
20	Lindsey Vander Weide (OH)	Shelly Fanning (MB)	Tori Dixon (MB)	Kaz Brown (MB)	Karis Watson (MB)
21	Karis Watson (MB)	Katie Lukes (OH)	Deja McClendon (OH)	Kendall White (L)	Kendall White (L)
22	Maria Schlegel (OH)	Maria Schlegel (OH)	Génesis Collazo (OPP)	Alisha Childress (S)	Erin Fairs (OH)
23	Nia Reed (OPP)	Emma Willis (MB)	Sassá Gonzaga (OH)	Nomaris Vélez Agosto (L)	Symone Abbott (OPP)
24	Génesis Collazo (OPP)	Nia Reed (OPP)	Lindsay Stalzer (OH)	Kayla Caffey (MB)	Marin Grote (MB)
25	Taylor Bruns Tegenrot (S)	Sassá Gonzaga (OH)	Shelly Fanning (MB)	Deja McClendon (OH)	Nicole Edelman-Cagliari (S)
26	Aury Cruz (OH)	Karis Watson (MB)	Karis Watson (MB)	Taylor Bruns Tegenrot (S)	Deja McClendon (OH)
27	Kaz Brown (MB)	Taylor Bruns Tegenrot (S)	Taylor Bruns Tegenrot (S)	Sassá Gonzaga (OH)	Alisha Childress (S)
28	Gabby Blossom (S)	Deja McClendon (OH)	Amanda Benson (L)	Symone Abbott (OPP)	Sassa Gonzaga (OH)
29	Erin Fairs (OH)	Gabby Blossom (S)	Erin Fairs (OH)	Ray Santos (S)	Shelly Fanning (MB)
30	Nia Parker-Robinson (OH)	Erin Fairs (OH)	Symone Abbott (OPP)	Lindsay Stalzer (OH)	Aury Cruz (OH)
31	Nicole Edelman-Cagliari (S)	Lindsey Vander Weide (OH)	Gabby Blossom (S)	Shelly Fanning (MB)	Nia Parker-Robinson (OH)
32	Deja McClendon (OH)	Nicole Edelman-Cagliari (S)	Nia Parker-Robinson (OH)	Nia Reed (OPP)	Lindsay Stalzer (OH)
33	Emma Willis (MB)	Kayla Caffey (MB)	Kayla Caffey (MB)	Nicole Edelman-Cagliari (S)	Maria Schlegel (OH)
34	Sassá Gonzaga (OH)	Lindsay Stalzer (OH)	Maria Schlegel (OH)	Nia Parker-Robinson (OH)	Blake Mohler (MB)
35	Amanda Benson (L)	Symone Abbott (OPP)	Blake Mohler (MB)	Marin Grote (MB)	Katie Lukes (OH)
36	Kayla Caffey (MB)	Nia Parker-Robinson (OH)	Ray Santos (S)	Maria Schlegel (OH)	Ray Santos (S)
37	Symone Abbott (OPP)	Marin Grote (MB)	Marin Grote (MB)	Danielle Hart (MB)	Nia Reed (OPP)
38	Ray Santos (S)	Ray Santos (S)	Kendall White (L)	Gabby Blossom (S)	Danielle Hart (MB)
39	Marin Grote (MB)	Amanda Benson (L)	Nicole Edelman-Cagliari (S)	Erin Fairs (OH)	Gabby Blossom (S)
40	Lindsay Stalzer (OH)	-	-	Amanda Benson (L)	Amanda Benson (L)

Note: Blake Mohler was added to the roster on October 11 and assigned to Team Linnehan for Week Two

2023 ATHLETES UNLIMITED VOLLEYBALL HEADSHOT ROSTER (NUMERICAL - OCTOBER 15)



00 Amanda
BENSON



1 Kendall
WHITE



2 Brooke
NUNEVILLER



3 Danielle
HART



4 Ray
SANTOS



5 Molly
McCAGE



6 Alisha
CHILDRESS



7 Erin
FAIRST



8 Sydney
HILLEY



9 Sassa
GONZAGA



10 Kaz
BROWN



11 Claire
CHAUSSEE



12 Leah
EDMOND



13 Nootsara
TOMKOM



14 Nicole
EDELMAN-CAGLIARI



15 Katie
LUKES



16 Jenna
ROSENTHAL



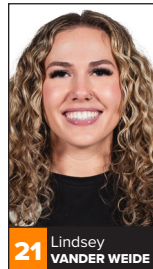
17 Taylor
BRUNS TEGENROT



18 Deja
McCLELLAND



20 Blake
MOHLER



21 Lindsey
VANDER WEIDE



22 Yossiana
PRESSLEY



23 Tori
DIXON



24 Aury
CRUZ



26 Maria
SCHLEGEL



27 Natalia
VALENTIN-ANDERSON



28 Kayla
CAFFEY



29 Lindsay
STALZER



31 Gabby
BLOSSOM



32 Nia
PARKER-ROBINSON



33 Nia
REED



37 Alli
LINNEHAN



40 Nomaris
VÉLEZ AGOSTO



42 Symone
ABBOTT



44 Willow
JOHNSON



46 Morgan
HENTZ



48 Karis
WATSON



54 Emma
WILLIS



55 Ali
BASTIANELLI



77 Genesis
COLLAZO



81 Bethania
DE LA CRUZ



88 Marin
GROTE



91 Saskia
HIPPE



97 Shelly
FANNING



Kayla
BANWARTH



Brandon
DIRECTO



Stephen
GBUR



Dave
RUBIO