

GAME NOTES

2023 VOLLEYBALL • MATCH DAY #10 • OCTOBER 27, 2023

Team Linnehan vs. Team Hentz • 4 p.m. Arizona Time • ESPN+
Team Edmond vs. Team Hilley • 6:30 p.m. Arizona Time • ESPN+



AUProSports.com • Twitter: @auprosports • Instagram: @AUProVolleyball • Facebook: Athletes Unlimited

2023 LEADERBOARD

| POS. | +/- | PLAYER | TOTAL |
|------|-----|---------------------------|-------|
| 1 | 1 | Leah Edmond | 2,614 |
| 2 | 1 | Morgan Hentz | 2,417 |
| 3 | 8 | Alli Linnehan | 2,131 |
| 4 | 0 | Sydney Hilley | 1,995 |
| 5 | -4 | Bethania De La Cruz | 1,994 |
| 6 | 11 | Molly McCage | 1,892 |
| 7 | 0 | Brooke Nuneviller | 1,888 |
| 8 | 7 | Lindsay Vander Weide | 1,835 |
| 9 | -3 | Claire Chaussee | 1,817 |
| 10 | -2 | Natalia Valentin-Anderson | 1,805 |
| 11 | 3 | Génesis Collazo | 1,804 |
| 12 | -7 | Jenna Rosenthal | 1,684 |
| 13 | -3 | Saskia Hippe | 1,641 |
| 14 | -1 | Aury Cruz | 1,489 |
| 15 | 15 | Nootsara Tomkom | 1,474 |
| 16 | -7 | Danielle Hart | 1,467 |
| 17 | -5 | Emma Willis | 1,393 |
| 18 | 6 | Tori Dixon | 1,353 |
| 19 | 16 | Ali Bastianelli | 1,328 |
| 20 | 7 | Taylor Bruns Tegenrot | 1,297 |
| 21 | -3 | Alisha Childress | 1,296 |
| 22 | 6 | Amanda Benson | 1,237 |
| 23 | -1 | Deja McClendon | 1,218 |
| 24 | -3 | Nomaris Vélez Agosto | 1,210 |
| 25 | -9 | Yossiana Pressley | 1,200 |
| 26 | -3 | Willow Johnson | 1,171 |
| 27 | -1 | Kendall White | 1,136 |
| 28 | -3 | Karis Watson | 1,074 |
| 29 | -9 | Kayla Caffey | 1,065 |
| 30 | 1 | Sassá Gonzaga | 998 |
| 31 | -2 | Nia Reed | 969 |
| 32 | -13 | Lindsay Stalzer | 946 |
| 33 | 5 | Kaz Brown | 889 |
| 34 | -1 | Ray Santos | 877 |
| 35 | 1 | Marin Grote | 786 |
| 36 | -4 | Nicole Edelman-Cagliari | 777 |
| 37 | 5 | Symone Abbott | 764 |
| 38 | -4 | Katie Lukes | 740 |
| 39 | 1 | Erin Fairs | 718 |
| 40 | -3 | Shelly Fanning | 648 |
| 41 | -2 | Gabby Blossom | 617 |
| 42 | 3 | Blake Mohler | 608 |
| 43 | -2 | Nia Parker-Robinson | 422 |
| 44 | 0 | Maria Schlegel | 402 |
| 45 | -2 | Anota Adekunle | 236 |

ASPIRATION ACES

93

Aspiration is committed to planting 10 trees for every service ace recorded during the 2023 Athletes Unlimited Volleyball season. There were **213 aces** during the 2022 campaign.

Aspiration ACES

VOLLEYBALL ATHLETES UNLIMITED

COLOR CATCHERS: Middle blocker **Shelly Fanning** and outside hitter **Nia Parker-Robinson** stand as the first players to wear all four jersey colors this season after their selections to Team Linnehan in the Week Four draft on Tuesday ... The duo will also be playing on the same team for the fourth straight week after competing for Team Valentin-Anderson, Team Edmond and Team Rosenthal in the first three weeks.

- Of the 44 eligible players, 41 of them have worn a single jersey color in two of the first four weeks ... Only Fanning, Parker-Robinson and outside hitter Bethania De La Cruz have worn a new color every week ... De La Cruz has donned a different colored top in each of her three weeks.
- There will not be a player who will wear the same color in all five weeks this season.

ALL OR NOTHING: After starting the season with six consecutive losses, the Orange jersey stormed back in Week Three as Team Hentz collected all three victories, including a pair of three-set sweeps ... The victories ended a nine-match losing streak for the Orange jersey dating back to Week Five last season.

- After posting a 9-6 record during the inaugural 2021 campaign, the Orange jersey has earned an 8-16 (.333) mark during the last two seasons entering the start of Week Four.
- There has been a team finishing with a 0-3 record in all three weeks this season after Team Hilley lost all three of its matches while donning the Purple jersey ... Team Valentin-Anderson went 0-3 in Week One before Team Linnehan suffered a similar fate two weeks ago.

SWEEP DREAMS: Team Hentz authored the eighth win points sweep through 18 matches this season with its 75-47 triumph over Team Edmond to close Week Three on Monday night ... The squad secured its second win points sweep of the week after downing Team Hilley, 75-55, last Friday night ... Over the last two weeks, Team Hentz has won four of its six matches in sweeping fashion.

- There have been 24 win points sweeps in Athletes Unlimited Volleyball history ... The 2021 season featured 10 win point sweeps in 30 matches, while team secured six point sweeps last year.

SECOND TO NONE: Outside hitter **Claire Chaussee** was selected by Team Hilley with the No. 1 pick in Tuesday's Week Four Draft, marking the third consecutive week she has been taken with the first overall choice ... She was picked by Team Hilley in Week Two before joining Team Rosenthal's roster last week.

- Chaussee is the second player in Athletes Unlimited Volleyball history to be the top draft pick in three drafts during a single season ... Outside hitter Leah Edmond was the No. 1 overall selection three times last season, going first in Weeks Two, Four and Five.
- In addition, Chaussee is the fourth player across all of Athletes Unlimited's sports to be taken with the top selection in three drafts in a single season, joining Edmond, **Alisha Gray** (basketball) and **Gwen Svekis** (softball).
- Chaussee also joins Svekis as the only players with three consecutive No. 1 weekly draft picks ... Svekis was the top pick three straight weeks during the inaugural 2020 Softball season.

HOT HENTZ: Libero **Morgan Hentz** enters Week Four with an 11-match win streak dating back to last season, the longest win streak in Athletes Unlimited Volleyball history ... After closing the 2022 campaign with back-to-back victories, the former Stanford standout has started this season with a perfect 9-0 record.

- Hentz's nine-match win streak to open the season equals the Athletes Unlimited Volleyball record for the best start to a season ... Setter **Kelly Hunter** collected nine straight victories to start the 2021 season.
- Hentz's 11-match win streak also matches the longest winning streak by any player in any Athletes Unlimited sport ... Catcher **Jordan Roberts** claimed 11 consecutive wins spanning the 2021 and 2022 Softball Championship Seasons, while 2023 Athletes Unlimited Softball champion **Odicci Alexander** collected 11 straight victories en route to winning the title.
- Hentz has become the seventh player in any Athletes Unlimited sport to win 10 or more games/matches in a row.
- Hentz owns a 24-3 set record over the first three weeks of the season, including six set sweeps ... She begins Week Four needing just seven set wins to create a new Athletes Unlimited Volleyball single-season record ... The current record of 30 set victories was set by middle blocker **Molly Lohman** and opposite **Erica Wilson** during the 2021 campaign.

FRIDAY NIGHT LIGHTS: Outside hitter **Claire Chaussee** has averaged 345.0 leaderboard points in her three Friday night appearances this season, including a season-high 425 points against Team Edmond to open Week Two ... Chaussee has fashioned a .316 hitting percentage with 59 kills in three Friday night contests while averaging 9.0 digs per outing ... She has also earned three of her Match MVP awards with MVP 1 commendations against Team Valentin-Anderson in Week One and Team Edmond in Week Three.

ERROR MESSAGE: Middle blocker **Molly McCage** and outside hitter **Alli Linnehan** each collected 14 kills and no attack errors in Team Hentz's win over Team Edmond on Monday night ... McCage established a new single-match league record with her .824 hitting percentage (14-0-17), while Linnehan hit .424 over her 33 attempts ... The 14 kills by McCage and Linnehan are tied for the second-most without an error in a match in league history, trailing the 17 kills registered by outside hitter **Brooke Nuneviller** against Team Edmond on October 15, 2023.

- Led by McCage and Linnehan, Team Hentz tallied just six attack errors in Monday's win to match the league's single-match record for fewest errors by a team ... Team De La Cruz had six errors against Team Valentin-Anderson on April 8, 2022, while Team Hentz also had six errors in its win over Team Hilley last Friday night. B

TEAM EDMOND (0-0)

Captain Leah Edmond
2023 Record as Captain 6-3
Career Record as Captain 8-7
Facilitator Dave Rubio

Oct. 27 vs. Team Hilley 6:30 p.m. AZT
Oct. 29 vs. Team Linnehan 6:30 p.m. AZT
Oct. 30 vs. Team Hentz 6:30 p.m. AZT

TEAM HENTZ (0-0)

Captain Morgan Hentz
2023 Record as Captain 6-0
Career Record as Captain 6-0
Facilitator Kayla Banwarth

Oct. 27 vs. Team Linnehan 4 p.m. AZT
Oct. 29 vs. Team Hilley 4 p.m. AZT
Oct. 30 vs. Team Edmond 6:30 p.m. AZT

TEAM LINNEHAN (0-0)

Captain Alli Linnehan
2023 Record as Captain 0-3
Career Record as Captain 0-3
Facilitator Brandon Directo

Oct. 27 vs. Team Hentz 4 p.m. AZT
Oct. 29 vs. Team Edmond 6:30 p.m. AZT
Oct. 30 vs. Team Hilley 4 p.m. AZT

TEAM HILLEY (0-0)

Captain Sydney Hilley
2023 Record as Captain 3-3
Career Record as Captain 3-3
Facilitator Stephen Gbur

Oct. 27 vs. Team Edmond 6:30 p.m. AZT
Oct. 29 vs. Team Hentz 4 p.m. AZT
Oct. 30 vs. Team Linnehan 4 p.m. AZT

RECORD BY JERSEY COLOR

| Week | One | Two | Three | Four | Five |
|--------|-----|-----|-------|------|------|
| Gold | 1-2 | 1-2 | 2-1 | - | - |
| Orange | 0-3 | 0-3 | 3-0 | - | - |
| Blue | 2-1 | 3-0 | 1-2 | - | - |
| Purple | 3-0 | 2-1 | 0-3 | - | - |

2023 STATISTICAL LEADERS

Kills Leah Edmond (139)
Attack Attempts Claire Chaussee (359)
Hitting Percentage* Molly McCage (.478)
Assists Alisha Childress (331)
Service Aces Bethania De La Cruz (10)
Reception Attempts Leah Edmond (243)
Digs Morgan Hentz (132)
Solo Blocks Kayla Caffey (21)
Block Assists Ali Bastianelli (22)
Leaderboard Pts. Leah Edmond (2,614)
Win Pts. Morgan Hentz (1,500)
Stat Pts. Leah Edmond (1,414)
MVP Pts. Bethania De La Cruz (220)

* - Minimum 40 attempts

VOLLEYBALL MEDIA CENTER PAGE



WEEKLY SCHEDULE AND FAN INFORMATION

| Date | Match | Time/Score | Broadcast | Ticket Promotion | Giveaway | Post-Match Activities |
|------------|---|---------------|-----------|------------------|----------------|---------------------------------|
| October 27 | Team Linnehan (Blue) vs. Team Hentz (Orange) | 4 p.m. AZT | ESPN+ | - | - | Autographs |
| | Team Edmond (Gold) vs. Team Hilley (Purple) | 6:30 p.m. AZT | ESPN+ | - | - | Autographs; Serve on the Court |
| October 29 | Team Hilley (Purple) vs. Team Hentz (Orange) | 4 p.m. AZT | ESPN+ | - | Tote Bag (250) | Autographs |
| | Team Linnehan (Blue) vs. Team Edmond (Gold) | 6:30 p.m. AZT | ESPNU | - | Tote Bag (250) | Autographs; Pepper on the Court |
| October 30 | Team Hilley (Purple) vs. Team Linnehan (Blue) | 4 p.m. AZT | ESPN+ | \$5 Kids Tickets | - | Autographs |
| | Team Hentz (Orange) vs. Team Edmond (Gold) | 6:30 p.m. AZT | ESPNU | \$5 Kids Tickets | - | Autographs; Photo on the Court |

Designated home team listed second on schedule • All matches are played at Legacy Park (Mesa, Ariz.) • Dates, times and broadcast designations are subject to change

WHO WE ARE

Athletes Unlimited is a new model of professional sports where athletes are decision makers and individual players are champions of team sports. We literally change the game with faster play and fluid teams, delivering next-level competition and engagement in which every moment counts. Athletes Unlimited began in 2020 with Women's Softball and followed with Women's Volleyball (2021), Women's Lacrosse (2021), Women's Basketball (2022) and AUX Softball (2022). Athletes Unlimited is building the next generation of both athletes and fans.

Our athletes are in charge of their team and league decisions, and of their individual success. We reboot rosters and gameplay to create fast and exciting competition that speaks to contemporary sports fans, bringing them close to the action and the athletes in games where every moment counts. We incorporate the player-centric model that fans love about fantasy sports. We use digital media platforms and cutting-edge technology to connect fans deeply to athletes at the top of their game on and off the field, and to the game itself.

HOW THE TEAMS ARE SELECTED

A draft will be held prior to each week's matches with the top four players in the individual leaderboard serving as the team captains. The captains will then fill their rosters by selecting 10 other players. Each draft will be held on the Tuesday before the week's matches.

Uniform colors will be assigned based on the team captain's rank on the leaderboard. The top-scoring captain's team will wear gold, while the second-highest point scorer's team dons orange jerseys. The third-place team will wear blue jerseys and the fourth-place team will wear purple jerseys.

Each team will consist of 11 players, including five PINs (outside hitters and opposite hitters), two setters, three middle blockers and one libero.

RULES OF INTEREST

Match Duration: Each Athletes Unlimited volleyball match consists of three (3) sets regardless of whether a team wins two sets in the match. A set is won when a team scores 25 or more points while winning by a margin of two (2) points or more.

Golden Set: In the event the match score is tied after three (3) sets, a "Golden Set" will be played to determine the match winner. The "Golden Set" will be won by the team which scores five (5) points while winning by a two-point margin or when a team reaches 10 total points.

Substitutions: Teams are limited to a maximum of six (6) substitutions in each set. In the event any match requires a "Golden Set," teams will be permitted no more than two (2) substitutions for the additional set.

Timeouts: Each team is permitted a maximum of two (2) timeouts per set with each timeout lasting two minutes (2:00). In the event a "Golden Set" is necessary, each team will be given one (1) timeout for the additional set.

Media Timeouts: A media timeout of three minutes (3:00) will take place when a team scores 15 points in a set during regulation. There will not be a media timeout in a "Golden Set."

Time Between Sets: A timeout of five (5) minutes will take place between each set.

Captain's Challenges: A captain may initiate replay review of certain events subject to the provisions of the rule as set out below. Replay reviews triggered under this rule shall be referred to as a 'Captain's Challenge', or 'Challenge' for short.

Each team is entitled to two (2) challenges per set. In the event a "Golden Set" is played, each team will be granted one (1) challenge.

A team may use a Challenge to initiate replay review of the following events:

- 🌀 Whether a ball is in or out
- 🌀 Block touch
- 🌀 Service line fault
- 🌀 3-meter line fault
- 🌀 Center line fault
- 🌀 Net touch

Any called fault, violation, or other decision by the match officials not listed above, or any non-call, is not a challengeable event.

Officials' Reviews: Match officials may initiate a replay review of the same specific events as "Captain's Challenge" under the guidelines below. Replay reviews triggered under this rule shall be referred to as an "Officials' Review."

An Officials' Review can only occur during a set when one team has reached 20 points or during a "Golden Set." In addition, there are no limits on the number of "Officials' Reviews" and they can be called regardless of whether a team has any remaining "Captain's Challenges" in the set.

INDIVIDUAL LEADERBOARD

While traditional volleyball statistics are kept during each Athletes Unlimited match, players earn individual points by accumulating those statistics. Points accumulated by statistics, set and/or match wins and MVP selections are used to create an individual leaderboard, which determines captains for each week and the individual champion at the end of the season.

Points are awarded at the following increments during the match:

| | |
|----------------|------------|
| Service Ace | +12 Points |
| Block | +12 Points |
| Kill | +8 Points |
| Dig | +5 Points |
| Good Pass | +2 Points |
| Block Assist * | +2 Points |
| Assist | +1 Point |
| Service Error | -8 Points |
| Attack Error | -12 Points |
| Set Error | -12 Points |
| Pass Error | -12 Points |

* - Middle blockers only

In the event a set requires more than 50 points to determine a winner, stat points will not be recorded for any stats after the 50-point mark in the set. In addition, if a match requires overtime or a "Golden Set," the stats accumulated during the "Golden Set" do not earn any individual points for the athletes on the leaderboard. There are also no additional team set win points for the "Golden Set."

In addition, athletes will be awarded 40 individual points if their team wins a single set. If the teams score the same number of points in a set, the points carry over to the next set.

Athletes on the winning team in each match will be awarded 60 individual points toward the individual leaderboard. The total score determines the overall match winner, which means a team may lose two sets, but win the overall match.

Example: The Gold Team loses the first two sets 25-23 and 25-23 to the Blue Team, but wins the last set, 25-17. The Gold Team wins the overall match points because they had the larger overall score, 71-67.

A total of three MVPs will be selected following each game by the athletes with the top player earning 60 points. The second MVP receives 40 points, while the third MVP claims 20 points.

MEDALS

The top four players on the final leaderboard in addition to the Defensive Player of the Year will receive a medal designed and fabricated for Athletes Unlimited by Lisa Issenberg, founder of Kiitellä, inc. The front face of the medal represents the identity of Athletes Unlimited, while the back face of the medal leans into the specific sport, the year, location and words about Athletes Unlimited's vision, mission and values on and off the field - Excellence in Community and Leadership.

ATHLETE COMPENSATION

Athletes are compensated in three ways during an Athletes Unlimited season, including base pay, win bonuses (set and match wins) and a leaderboard bonus. Athletes Unlimited also makes an additional donation equal to the athlete's win bonus to their selected cause partner.

POSTSEASON AWARDS

At the conclusion of the 2023 Athletes Unlimited Volleyball season, the following awards will be presented during the closing ceremony:

- 🌀 Medals to top four finishers on leaderboard
- 🌀 Defensive Player of the Year & Blocker of the Year
- 🌀 Teammate of the Year
- 🌀 Athletes Unlimited All-Position Team (top players at each position)

The All-Position Team will include one setter, one libero, one opposite, two middle blockers and two outside hitters.

THE BOOK OF UNLIMITED

The Book of Unlimited was designed, handmade and bound for Athletes Unlimited and serves as a record keeper of its leagues. The book, which was handmade by Tikhon Verygyn in his studio in Kyiv, Ukraine, weighs nearly 25 pounds, measures approximately 12" by 18" and contains nearly 500 pages. The champion, along with all who competed, are inscribed into the book. In addition, The Book of Unlimited also contains a history of achievements in Athletes Unlimited, including stories, highlights and events.

The book is opened during the Opening Ceremony for each season and is closed after the champion is named and her name is inscribed into the book. The tradition began during Athletes Unlimited Softball's inaugural season in 2020.

2023 ATHLETES UNLIMITED VOLLEYBALL ACTIVE ROSTER (NUMERICAL ORDER)

| NO. | NAME | POS. | HT. | HOMETOWN | COLLEGE | PRONOUNS | PRONUNCIATION | INSTAGRAM | TWITTER |
|-----|---------------------------|------|------|-----------------------------------|---------------------------------|----------|-------------------------------------|-------------------|-----------------|
| 00 | Amanda Benson | L | 5-7 | Litchfield Park, Ariz. | Oregon | She/Her | | amandasbenson | abenson_10 |
| 1 | Kendall White | L | 5-7 | Zionsville, Ind. | Penn State | She/Her | | kbaby10 | - |
| 2 | Brooke Nuneviller | OH | 5-11 | Chandler, Ariz. | Oregon | She/Her | none-uh-vill-uhr | brooke_nuneviller | brookeyy_5 |
| 3 | Danielle Hart | MB | 6-4 | Virginia Beach, Va. | Wisconsin | She/Her | | daniellehart | daniellehart |
| 4 | Ray Santos | S | 5-10 | Ponce, Puerto Rico | Arkansas | She/Her | rye sahn-tos | rsantos33 | rsantos33 |
| 5 | Molly McCage | MB | 6-3 | Spring, Texas | Texas | She/Her | | mollymccage | mollymccage |
| 6 | Alisha Childress | S | 6-0 | Leland, Mich. | Penn State | She/Her | Uh-lee-shuh Chill-driss | aglass1_6 | aglass6 |
| 7 | Erin Fairs | OH | 5-10 | Houston, Texas | Louisville | She/Her | | erinnfairs | erinfairs |
| 8 | Sydney Hilley | S | 6-0 | Brooklyn Park, Minn. | Wisconsin | She/Her | | sydneyhilley | sydneyhilley |
| 9 | Sassa Gonzaga | OH | 5-10 | Barbacena, Brazil | - | She/Her | sah-suh gon-zah-guh | welissa10 | - |
| 10 | Kaz Brown | MB | 6-4 | Waterloo, Iowa | Kentucky | She/Her | | kazbrown | kazbrown11 |
| 11 | Claire Chaussee | OH | 6-0 | Sun Prairie, Wis. | Louisville | She/Her | SHAW-say | clairechaussee | clairechaussee9 |
| 12 | Leah Edmond | OH | 6-2 | Lexington, Ky. | Kentucky | She/Her | | leahedmond13 | leahedmond13 |
| 13 | Nootsara Tomkom | S | 5-7 | Ban Pong, Thailand | Rattana Bundit Univ. | She/Her | noo-SAHR-uh tom-kom | nootsara13 | - |
| 14 | Nicole Edelman-Cagliari | S | 6-0 | Boulder, Colo. | Colorado | She/Her | cag-lee-ARE-ee | nicoledelman | nicoledelman |
| 15 | Katie Lukes | OH | 6-2 | San Clemente, Calif. | San Diego | She/Her | | katie_lukes | - |
| 16 | Jenna Rosenthal | MB | 6-5 | Fond du Lac, Wis. | Marquette | She/Her | | jenna.rosenthal | - |
| 17 | Taylor Bruns Tegenrot | S | 5-11 | Normal, Ill. | South Carolina | She/Her | Taylor Bruns Tay-gen-root | tbruns27 | - |
| 18 | Deja McClendon | OH | 6-1 | Louisville, Ky. | Penn State | She/Her | day-zhuh | dejabeja | deja_beja |
| 20 | Blake Mohler | MB | 6-2 | Ocean Springs, Miss. | Purdue | She/Her | moe-ler | blakemohler | blakeelizabeth1 |
| 21 | Lindsey Vander Weide | OH | 6-3 | Turlock, Calif. | Oregon | She/Her | van-der-wide-uh | lindseyvdb | lindseyvdb |
| 22 | Yossiana Pressley | OH | 6-0 | Cypress, Texas | Baylor | She/Her | YAW-see-AW-nuh | yossiana22_ | yossiana22 |
| 23 | Tori Dixon | MB | 6-3 | Burnsville, Minn. | Minnesota | She/Her | | toridixon06 | toridixon06 |
| 24 | Aury Cruz | OH | 5-10 | Levittown, Puerto Rico | Florida | She/Her | R-EE Crews | azcruz | azcruz |
| 26 | Maria Schlegel | OH | 6-0 | Asturias, Spain | Polytechnic Madrid's University | She/Her | schlay-gull | mschlegel16 | - |
| 27 | Natalia Valentin-Anderson | S | 5-6 | Caguas, Puerto Rico | Florida International | She/Her | nuh-TAHL-ee-uh val-in-teen anderson | nvale09 | - |
| 28 | Kayla Caffey | MB | 6-0 | Chicago, Ill. | Texas | She/Her | | itskayalexis | - |
| 29 | Lindsay Stalzer | OH | 6-1 | Kewanee, Ill. | Bradley | She/Her | | lindsaystalzer | linzeemarie |
| 31 | Gabby Blossom | S | 5-9 | St. Louis, Mo. | San Diego | She/Her | | gblossom13 | - |
| 32 | Nia Parker-Robinson | OH | 6-2 | Indianapolis, Ind. | North Carolina | She/Her | knee-uh | niarobinson_ | - |
| 33 | Nia Reed | OPP | 6-1 | Fort Lee, N.J. | Penn State | She/Her | knee-uh | niabia7 | niakareed |
| 37 | Alli Linnehan | OH | 6-1 | Floyds Knobs, Ind. | Kentucky | She/Her | alley lynn-uh-han | allistumler | astumler |
| 40 | Nomaris Vélez Agosto | L | 5-4 | Corozal, Puerto Rico | Inter American Univ. | She/Her | no-mahr-is vuh-lez ah-go-sto | nomarivelez23 | - |
| 42 | Symone Abbott | OPP | 6-1 | Detroit, Mich. | Northwestern | She/Her | | symoneabbs | symoney10 |
| 44 | Willow Johnson | OPP | 6-3 | Paradise Valley, Ariz. | Oregon | She/Her | | willowj4 | johnson4willow |
| 46 | Morgan Hentz | L | 5-9 | Lakeside Park, Ky. | Stanford | She/Her | | morganhentz | - |
| 48 | Karis Watson | MB | 6-2 | Rock Hill, S.C. | Clemson | She/Her | care-iss | karisw8 | - |
| 54 | Emma Willis | MB | 6-3 | La Jolla, Calif. | Denver | She/Her | | emmawillis7 | - |
| 55 | Ali Bastianelli | MB | 6-3 | Marysville, Mich. | Illinois | She/Her | Ali Bas-tee-uh-nell-ee | alisonrose5 | alisonrose_5 |
| 77 | Genesis Collazo | OPP | 6-1 | Corozal, Puerto Rico | - | She/Her | hen-uh-sis coy-ah-zo | genesis.collazo7 | - |
| 81 | Bethania De La Cruz | OH | 6-2 | Santo Domingo, Dominican Republic | - | She/Her | Buh-TAN-ya De La Cruz | thebigbeth | - |
| 88 | Marin Grote | MB | 6-4 | Burbank, Calif. | Washington | She/Her | MAIR-in groat | marin_grote | - |
| 91 | Saskia Hippe | OPP | 6-1 | Berlin, Germany | - | She/Her | sahs-kee-uh hip-ah | saskia_hippe | sassi_13 |
| 97 | Shelly Fanning | MB | 6-2 | Cypress, Texas | Baylor | She/Her | | shelleystafford | - |

2023 ATHLETES UNLIMITED VOLLEYBALL INACTIVE ROSTER (NUMERICAL ORDER)

| NO. | NAME | POS. | HT. | HOMETOWN | COLLEGE | PRONOUNS | PRONUNCIATION | INSTAGRAM | TWITTER |
|-----|----------------|------|-----|---------------|---------|----------|---------------|---------------|----------------|
| 19 | Anota Adekunle | MB | 6-1 | Humble, Texas | Rice | She/Her | | anotaadekunle | anota_michelle |

2023 ATHLETES UNLIMITED VOLLEYBALL ALPHABETICAL ROSTER

| NO. | NAME | NO. | NAME | NO. | NAME | NO. | NAME |
|-----|-----------------------|-----|-------------------------|-----|---------------------|-----|---------------------------|
| 42 | Symone Abbott | 81 | Bethania De La Cruz | 44 | Willow Johnson | 26 | Maria Schlegel |
| 19 | Anota Adekunle | 23 | Tori Dixon | 37 | Alli Linnehan | 29 | Lindsay Stalzer |
| 55 | Ali Bastianelli | 14 | Nicole Edelman Cagliari | 15 | Katie Lukes | 13 | Nootsara Tomkom |
| 00 | Amanda Benson | 12 | Leah Edmond | 5 | Molly McCage | 27 | Natalia Valentin-Anderson |
| 31 | Gabby Blossom | 7 | Erin Fairs | 18 | Deja McClendon | 21 | Lindsey Vander Weide |
| 10 | Kaz Brown | 97 | Shelly Fanning | 20 | Blake Mohler | 40 | Nomaris Vélez Agosto |
| 17 | Taylor Bruns Tegenrot | 9 | Sassa Gonzaga | 2 | Brooke Nuneviller | 48 | Karis Watson |
| 28 | Kayla Caffey | 88 | Marin Grote | 32 | Nia Parker-Robinson | 1 | Kendall White |
| 11 | Claire Chaussee | 3 | Danielle Hart | 22 | Yossiana Pressley | 54 | Emma Willis |
| 6 | Alisha Childress | 46 | Morgan Hentz | 33 | Nia Reed | | |
| 77 | Genesis Collazo | 8 | Sydney Hilley | 16 | Jenna Rosenthal | | |
| 24 | Aury Cruz | 91 | Saskia Hippe | 4 | Ray Santos | | |

ATHLETE CAUSES

The Athlete Causes program, powered by Give Lively, will provide funding to charities of the players' choosing equal to 100 percent of their season win bonus and players will have the opportunity to create their own fundraising pages to support the organizations of their choice.

| NO. | ATHLETE | CAUSE |
|-----|---------------------------|--|
| 00 | Amanda Benson | One Love Foundation |
| 1 | Kendall White | Operation Underground Railroad |
| 2 | Brooke Nuneviller | Pink Fund |
| 3 | Danielle Hart | Alzheimer's Association |
| 4 | Ray Santos | Global Village Project |
| 5 | Molly McCage | 1% For The Planet |
| 6 | Alisha Childress | Childress Family Foundation |
| 7 | Erin Fairs | We Serve First |
| 8 | Sydney Hilley | Side Out Foundation |
| 9 | Welissa Gonzaga | National Domestic Violence Hotline |
| 10 | Kaz Brown | Lupus Foundation of America |
| 11 | Claire Chaussee | Lasley and Rhyan Prather Foundation |
| 12 | Leah Edmond | American Cancer Society |
| 13 | Nootsara Tomkom | The Virago Project |
| 14 | Nicole Edelman-Cagliari | Women's Sports Foundation |
| 15 | Katie Lukes | Morgan's Message |
| 16 | Jenna Rosenthal | Operation Underground Railroad |
| 17 | Taylor Bruns Tegenrot | American Foundation for Suicide Prevention |
| 18 | Deja McClendon | JOYcademy |
| 19 | Anota Adekunle | Ella Baker Center for Human Rights |
| 20 | Blake Mohler | Friends of Jaclyn |
| 21 | Lindsey Vander Weide | The Humane Society |
| 22 | Yossiana Pressley | CURE Childhood Cancer |
| 23 | Tori Dixon | OC Pom Rescue |
| 24 | Aury Cruz | Susan G Komen |
| 26 | Maria Schlegel | American Foundation for Suicide Prevention |
| 27 | Natalia Valentin-Anderson | Baby2Baby |
| 28 | Kayla Caffey | BUILD (Broader Urban Involvement & Leadership Development) |
| 29 | Lindsay Stalzer | 1% For The Planet |
| 31 | Gabby Blossom | Michael J Fox Foundation |
| 32 | Nia Parker-Robinson | Eclectic Soul VOICES Corporation |
| 33 | Nia Reed | New Heights Youth Foundation |
| 37 | Alli Linnehan | Go Ministries |
| 40 | Nomaris Vélez Agosto | Morgan's Message |
| 42 | Symone Abbott | Morgan's Message |
| 44 | Willow Johnson | Phoenix Police Foundation |
| 46 | Morgan Hentz | New Perceptions |
| 48 | Karis Watson | Operation Underground Railroad |
| 54 | Emma Willis | The Citizens Foundation |
| 55 | Ali Bastianelli | The Rainbow Connection |
| 77 | Genesis Collazo | Players for Pits |
| 81 | Bethania De La Cruz | Starlings USA |
| 88 | Marin Grote | 1% For The Planet |
| 91 | Saskia Hippe | The Virago Project |
| 97 | Shelly Fanning | Uplifting Athletes |

2023 ATHLETES UNLIMITED VOLLEYBALL SCHEDULE AND RESULTS

| Date | Match # | Match | Broadcast | Time/Score | MVP 1 | MVP 2 | MVP 3 |
|------------|---------|--|-----------|-----------------------------|---------------------|----------------------|---------------------------|
| October 6 | 1 | Team Nootsara vs. Team Valentin-Anderson | ESPN+ | Team Nootsara, 75-63 | Claire Chaussee | Nootsara Tomkom | Nia Reed |
| October 6 | 2 | Team De La Cruz vs. Team Edmond | ESPN+ | Team Edmond, 77-73 | Alli Linnehan | Bethania De La Cruz | Leah Edmond |
| October 8 | 3 | Team Edmond vs. Team Valentin-Anderson | ESPN+ | Team Edmond, 75-58 | Leah Edmond | Sydney Hilley | Danielle Hart |
| October 8 | 4 | Team Nootsara vs. Team De La Cruz | ESPNU | Team Nootsara, 70-69 | Willow Johnson | Ali Bastianelli | Nootsara Tomkom |
| October 9 | 5 | Team Edmond vs. Team Nootsara | ESPNU | Team Edmond, 75-44 | Morgan Hentz | Leah Edmond | Sydney Hilley |
| October 9 | 6 | Team Valentin-Anderson vs. Team De La Cruz | ESPNU | Team De La Cruz, 74-72 (GS) | Bethania De La Cruz | Kaz Brown | Kayla Caffey |
| October 13 | 7 | Team Hentz vs. Team Linnehan | ESPN+ | Team Hentz, 76-51 | Bethania De La Cruz | Morgan Hentz | Taylor Bruns Tegenrot |
| October 13 | 8 | Team Edmond vs. Team Hilley | ESPN+ | Team Hilley, 74-62 | Claire Chaussee | Yossiana Pressley | Sydney Hilley |
| October 15 | 9 | Team Hilley vs. Team Linnehan | ESPN+ | Team Hilley, 75-53 | Claire Chaussee | Sydney Hilley | Kayla Caffey |
| October 15 | 10 | Team Hentz vs. Team Edmond | ESPN+ | Team Hentz, 73-64 | Brooke Nuneviller | Morgan Hentz | Bethania De La Cruz |
| October 16 | 11 | Team Hilley vs. Team Hentz | ESPN+ | Team Hentz, 78-55 | Saskia Hippe | Bethania De La Cruz | Morgan Hentz |
| October 16 | 12 | Team Linnehan vs. Team Edmond | ESPNU | Team Edmond, 69-63 | Molly McCage | Deja McClendon | Leah Edmond |
| October 20 | 13 | Team Hilley vs. Team Hentz | ESPN+ | Team Hentz, 75-55 | Nootsara Tomkom | Lindsey Vander Weide | Molly McCage |
| October 20 | 14 | Team Edmond vs. Team Rosenthal | ESPN+ | Team Edmond, 71-68 | Tori Dixon | Saskia Hippe | Claire Chaussee |
| October 22 | 15 | Team Rosenthal vs. Team Hentz | ESPNU | Team Hentz, 73-60 | Molly McCage | Alli Linnehan | Morgan Hentz |
| October 22 | 16 | Team Hilley vs. Team Edmond | ESPNU | Team Edmond, 72-60 | Leah Edmond | Tori Dixon | Natalia Valentin-Anderson |
| October 23 | 17 | Team Rosenthal vs. Team Hilley | ESPN+ | Team Hilley, 72-59 | Willow Johnson | Karis Watson | Sydney Hilley |
| October 23 | 18 | Team Hentz vs. Team Edmond | ESPNU | Team Hentz, 75-47 | Molly McCage | Alli Linnehan | Nootsara Tomkom |
| October 27 | 19 | Team Linnehan vs. Team Hentz | ESPN+ | 7 p.m. ET | | | |
| October 27 | 20 | Team Edmond vs. Team Hilley | ESPN+ | 9:30 p.m. ET | | | |
| October 29 | 21 | Team Hilley vs. Team Hentz | ESPN+ | 7 p.m. ET | | | |
| October 29 | 22 | Team Linnehan vs. Team Edmond | ESPNU | 9:30 p.m. ET | | | |
| October 30 | 23 | Team Hilley vs. Team Linnehan | ESPN+ | 7 p.m. ET | | | |
| October 30 | 24 | Team Hentz vs. Team Edmond | ESPNU | 9:30 p.m. ET | | | |
| November 3 | 25 | Team Blue vs. Team Orange | ESPN+ | 7 p.m. ET | | | |
| November 3 | 26 | Team Gold vs. Team Purple | ESPN+ | 9:30 p.m. ET | | | |
| November 5 | 27 | Team Purple vs. Team Orange | ESPN+ | 7 p.m. ET | | | |
| November 5 | 28 | Team Blue vs. Team Gold | ESPNU | 9:30 p.m. ET | | | |
| November 6 | 29 | Team Purple vs. Team Blue | ESPN+ | 7 p.m. ET | | | |
| November 6 | 30 | Team Orange vs. Team Gold | ESPNU | 9:30 p.m. ET | | | |

2023 ATHLETES UNLIMITED VOLLEYBALL LEADERBOARD

| RANK | CHANGE | NAME | TOTAL POINTS | WIN POINTS | STAT POINTS | MVP POINTS |
|------|--------|---------------------------|--------------|------------|-------------|------------|
| 1 | 1 | Leah Edmond | 2,614 | 1,000 | 1,414 | 200 |
| 2 | 1 | Morgan Hentz | 2,417 | 1,500 | 737 | 180 |
| 3 | 8 | Alli Linnehan | 2,131 | 1,040 | 951 | 140 |
| 4 | 0 | Sydney Hilley | 1,995 | 1,000 | 855 | 140 |
| 5 | -4 | Bethania De La Cruz | 1,994 | 840 | 934 | 220 |
| 6 | 11 | Molly McCage | 1,892 | 1,000 | 692 | 200 |
| 7 | 0 | Brooke Nuneviller | 1,888 | 760 | 1,068 | 60 |
| 8 | 7 | Lindsey Vander Weide | 1,835 | 1,220 | 575 | 40 |
| 9 | -3 | Claire Chaussee | 1,817 | 720 | 897 | 200 |
| 10 | -2 | Natalia Valentin-Anderson | 1,805 | 860 | 925 | 20 |
| 11 | 3 | Génesis Collazo | 1,804 | 1,220 | 584 | 0 |
| 12 | -7 | Jenna Rosenthal | 1,684 | 1,120 | 564 | 0 |
| 13 | -3 | Saskia Hippe | 1,641 | 860 | 681 | 100 |
| 14 | -1 | Aury Cruz | 1,489 | 720 | 769 | 0 |
| 15 | 15 | Nootsara Tomkom | 1,474 | 820 | 514 | 140 |
| 16 | -7 | Danielle Hart | 1,467 | 1,000 | 447 | 20 |
| 17 | -5 | Emma Willis | 1,393 | 1,180 | 213 | 0 |
| 18 | 6 | Tori Dixon | 1,353 | 680 | 573 | 100 |
| 19 | 16 | Ali Bastianelli | 1,328 | 820 | 468 | 40 |
| 20 | 7 | Taylor Bruns Tegenrot | 1,297 | 1,040 | 237 | 20 |
| 21 | -3 | Alisha Childress | 1,296 | 560 | 736 | 0 |
| 22 | 6 | Amanda Benson | 1,237 | 680 | 557 | 0 |
| 23 | -1 | Deja McClendon | 1,218 | 1,000 | 178 | 40 |
| 24 | -3 | Nomaris Vélez Agosto | 1,210 | 560 | 650 | 0 |
| 25 | -9 | Yossiana Pressley | 1,200 | 740 | 420 | 40 |
| 26 | -3 | Willow Johnson | 1,171 | 440 | 611 | 120 |
| 27 | -1 | Kendall White | 1,136 | 500 | 636 | 0 |
| 28 | -3 | Karis Watson | 1,074 | 900 | 134 | 40 |
| 29 | -9 | Kayla Caffey | 1,065 | 660 | 365 | 40 |
| 30 | 1 | Sassá Gonzaga | 998 | 780 | 218 | 0 |
| 31 | -2 | Nia Reed | 969 | 720 | 229 | 20 |
| 32 | -13 | Lindsay Stalzer | 946 | 980 | -34 | 0 |
| 33 | 5 | Kaz Brown | 889 | 400 | 449 | 40 |
| 34 | -1 | Ray Santos | 877 | 860 | 17 | 0 |
| 35 | 1 | Marin Grote | 786 | 780 | 6 | 0 |
| 36 | -4 | Nicole Edelman-Cagliari | 777 | 720 | 57 | 0 |
| 37 | 5 | Symone Abbott | 764 | 760 | 4 | 0 |
| 38 | -4 | Katie Lukes | 740 | 480 | 260 | 0 |
| 39 | 1 | Erin Fairs | 718 | 540 | 178 | 0 |
| 40 | -3 | Shelly Fanning | 648 | 420 | 228 | 0 |
| 41 | -2 | Gabby Blossom | 617 | 620 | -3 | 0 |
| 42 | 3 | Blake Mohler | 608 | 620 | -12 | 0 |
| 43 | -2 | Nia Parker-Robinson | 422 | 420 | 2 | 0 |
| 44 | 0 | Maria Schlegel | 402 | 300 | 102 | 0 |
| 45 | -2 | Anota Adekunle | 236 | 220 | 16 | 0 |

2023 ATHLETES UNLIMITED VOLLEYBALL LEADERBOARD POINTS BY WEEK

| NAME | WEEK ONE | WEEK TWO | WEEK THREE | WEEK FOUR | WEEK FIVE | TOTAL POINTS |
|----------------------------|----------|----------|------------|-----------|-----------|--------------|
| Abbott, Symone | 220 | 36 | 508 | | | 764 |
| Adekunle, Anota | 236 | 0 | 0 | | | 236 |
| Bastianelli, Ali | 475 | 80 | 773 | | | 1,328 |
| Benson, Amanda | 248 | 495 | 494 | | | 1,237 |
| Blossom, Gabby | 225 | 212 | 180 | | | 617 |
| Brown, Kaz | 279 | 215 | 395 | | | 889 |
| Bruns Tegenrot, Taylor | 492 | 260 | 545 | | | 1,297 |
| Caffey, Kayla | 407 | 449 | 209 | | | 1,065 |
| Chaussee, Claire | 578 | 819 | 420 | | | 1,817 |
| Childress, Alisha | 485 | 452 | 359 | | | 1,296 |
| Collazo, Génesis | 745 | 316 | 743 | | | 1,804 |
| Cruz, Aury | 439 | 634 | 416 | | | 1,489 |
| De La Cruz, Bethania | 729 | 1,145 | 120 | | | 1,994 |
| Dixon, Tori | 242 | 539 | 572 | | | 1,353 |
| Edelman-Cagliari, Nicole | 317 | 320 | 140 | | | 777 |
| Edmond, Leah | 1,028 | 709 | 877 | | | 2,614 |
| Fairs, Erin | 223 | 215 | 280 | | | 718 |
| Fanning, Shelly | 90 | 412 | 146 | | | 648 |
| Gonzaga, Sassá | 309 | 334 | 355 | | | 998 |
| Grote, Marin | 286 | 220 | 280 | | | 786 |
| Hart, Danielle | 817 | 382 | 268 | | | 1,467 |
| Hentz, Morgan | 881 | 835 | 701 | | | 2,417 |
| Hilley, Sydney | 880 | 586 | 529 | | | 1,995 |
| Hippe, Saskia | 321 | 803 | 517 | | | 1,641 |
| Johnson, Willow | 590 | 221 | 360 | | | 1,171 |
| Linnehan, Alli | 923 | 155 | 1,053 | | | 2,131 |
| Lukes, Katie | 86 | 494 | 160 | | | 740 |
| McCage, Molly | 374 | 574 | 944 | | | 1,892 |
| McClendon, Deja | 500 | 329 | 389 | | | 1,218 |
| Mohler, Blake | 80 | 28 | 500 | | | 608 |
| Nuneviller, Brooke | 364 | 941 | 583 | | | 1,888 |
| Parker-Robinson, Nia | 83 | 226 | 113 | | | 422 |
| Pressley, Yossiana | 359 | 611 | 230 | | | 1,200 |
| Reed, Nia | 433 | 308 | 228 | | | 969 |
| Rosenthal, Jenna | 675 | 748 | 261 | | | 1,684 |
| Santos, Ray | 92 | 505 | 280 | | | 877 |
| Schlegel, Maria | 98 | 124 | 180 | | | 402 |
| Stalzer, Lindsay | 360 | 500 | 86 | | | 946 |
| Tomkom, Nootsara | 579 | 145 | 750 | | | 1,474 |
| Valentin-Anderson, Natalia | 400 | 860 | 545 | | | 1,805 |
| Vander Weide, Lindsey | 481 | 500 | 854 | | | 1,835 |
| Vélez Agosto, Nomaris | 414 | 425 | 371 | | | 1,210 |
| Watson, Karis | 274 | 500 | 300 | | | 1,074 |
| White, Kendall | 500 | 258 | 378 | | | 1,136 |
| Willis, Emma | 500 | 580 | 313 | | | 1,393 |

2023 ATHLETES UNLIMITED VOLLEYBALL SEASON STATISTICS

| RANK | PLAYER | SP | K | K/S | E | ATT. | PCT. | A | A/S | SET E | SA | SA/S | SE | TRA | RE | PCT. | D | D/S | BS | BS/S | BA | BA/S | LPTS |
|------|----------------------------|----|-----|------|----|------|--------|-----|-------|-------|----|------|----|-----|----|-------|-----|------|----|------|----|------|-------|
| 1 | Edmond, Leah | 27 | 139 | 5.15 | 38 | 313 | .323 | 6 | 0.22 | 0 | 4 | 0.15 | 8 | 243 | 11 | .460 | 90 | 3.33 | 20 | 0.74 | 0 | 0.00 | 2,614 |
| 2 | Hentz, Morgan | 27 | 0 | 0.00 | 0 | 1 | .000 | 28 | 1.04 | 0 | 0 | 0.00 | 0 | 89 | 4 | .650 | 132 | 4.89 | 0 | 0.00 | 0 | 0.00 | 2,417 |
| 3 | Linnehan, Alli | 27 | 88 | 3.26 | 25 | 287 | .220 | 9 | 0.33 | 0 | 3 | 0.11 | 5 | 140 | 6 | .510 | 57 | 2.11 | 17 | 0.63 | 0 | 0.00 | 2,131 |
| 4 | Hilley, Sydney | 27 | 16 | 0.59 | 3 | 43 | .302 | 319 | 11.81 | 5 | 6 | 0.22 | 3 | 3 | 0 | .000 | 72 | 2.67 | 9 | 0.33 | 0 | 0.00 | 1,995 |
| 5 | De La Cruz, Bethania | 19 | 100 | 5.26 | 17 | 218 | .381 | 3 | 0.16 | 2 | 10 | 0.53 | 6 | 134 | 4 | .530 | 46 | 2.42 | 3 | 0.16 | 0 | 0.00 | 1,994 |
| 6 | McCage, Molly | 26 | 75 | 2.88 | 9 | 138 | .478 | 3 | 0.12 | 0 | 2 | 0.08 | 11 | 2 | 0 | .000 | 21 | 0.81 | 11 | 0.42 | 12 | 0.46 | 1,892 |
| 7 | Nuneviller, Brooke | 28 | 100 | 3.57 | 20 | 271 | .295 | 2 | 0.07 | 1 | 4 | 0.14 | 8 | 170 | 5 | .520 | 83 | 2.96 | 2 | 0.07 | 0 | 0.00 | 1,888 |
| 8 | Vander Weide, Lindsey | 20 | 48 | 2.40 | 16 | 157 | .204 | 3 | 0.15 | 0 | 5 | 0.25 | 5 | 167 | 6 | .520 | 36 | 1.80 | 5 | 0.25 | 0 | 0.00 | 1,835 |
| 9 | Chaussee, Claire | 26 | 124 | 4.77 | 44 | 359 | .223 | 0 | 0.00 | 0 | 2 | 0.08 | 17 | 214 | 9 | .500 | 65 | 2.50 | 9 | 0.35 | 0 | 0.00 | 1,817 |
| 10 | Valentin-Anderson, Natalia | 28 | 12 | 0.43 | 1 | 29 | .379 | 324 | 11.57 | 7 | 9 | 0.32 | 8 | 0 | 0 | .000 | 98 | 3.50 | 8 | 0.29 | 0 | 0.00 | 1,805 |
| 11 | Collazo, Génesis | 26 | 45 | 1.73 | 23 | 154 | .143 | 3 | 0.12 | 0 | 1 | 0.04 | 2 | 0 | 0 | .000 | 61 | 2.35 | 16 | 0.62 | 0 | 0.00 | 1,804 |
| 12 | Rosenthal, Jenna | 27 | 59 | 2.19 | 12 | 138 | .341 | 2 | 0.07 | 1 | 3 | 0.11 | 3 | 9 | 1 | .330 | 22 | 0.81 | 9 | 0.33 | 15 | 0.56 | 1,684 |
| 13 | Hippe, Saskia | 27 | 89 | 3.30 | 37 | 258 | .202 | 3 | 0.11 | 0 | 5 | 0.19 | 10 | 0 | 0 | .000 | 70 | 2.59 | 8 | 0.30 | 0 | 0.00 | 1,641 |
| 14 | Cruz, Aury | 25 | 55 | 2.20 | 23 | 167 | .192 | 4 | 0.16 | 1 | 4 | 0.16 | 4 | 132 | 1 | .580 | 81 | 3.24 | 4 | 0.16 | 0 | 0.00 | 1,489 |
| 15 | Tomkom, Nootsara | 25 | 3 | 0.12 | 0 | 10 | .300 | 216 | 8.64 | 6 | 3 | 0.12 | 5 | 2 | 2 | .000 | 70 | 2.80 | 2 | 0.08 | 0 | 0.00 | 1,474 |
| 16 | Hart, Danielle | 18 | 37 | 2.06 | 10 | 95 | .284 | 3 | 0.17 | 0 | 3 | 0.17 | 7 | 7 | 0 | .570 | 16 | 0.89 | 16 | 0.89 | 14 | 0.78 | 1,467 |
| 17 | Willis, Emma | 17 | 26 | 1.53 | 8 | 55 | .327 | 3 | 0.18 | 0 | 2 | 0.12 | 6 | 1 | 0 | .000 | 14 | 0.82 | 3 | 0.18 | 8 | 0.47 | 1,393 |
| 18 | Dixon, Tori | 28 | 39 | 1.39 | 8 | 93 | .333 | 4 | 0.14 | 0 | 2 | 0.07 | 3 | 9 | 0 | .440 | 21 | 0.75 | 18 | 0.64 | 12 | 0.43 | 1,353 |
| 19 | Bastianelli, Ali | 27 | 42 | 1.56 | 12 | 109 | .275 | 4 | 0.15 | 0 | 4 | 0.15 | 11 | 3 | 0 | .670 | 12 | 0.44 | 17 | 0.63 | 22 | 0.81 | 1,328 |
| 20 | Bruns Tegenrot, Taylor | 25 | 7 | 0.28 | 0 | 21 | .333 | 60 | 2.40 | 1 | 1 | 0.04 | 3 | 0 | 0 | .000 | 18 | 0.72 | 5 | 0.20 | 0 | 0.00 | 1,297 |
| 21 | Childress, Alisha | 28 | 11 | 0.39 | 2 | 35 | .257 | 331 | 11.82 | 9 | 5 | 0.18 | 6 | 0 | 0 | .000 | 78 | 2.79 | 4 | 0.14 | 0 | 0.00 | 1,296 |
| 22 | Benson, Amanda | 28 | 0 | 0.00 | 0 | 0 | .000 | 21 | 0.75 | 0 | 0 | 0.00 | 0 | 150 | 7 | .610 | 88 | 3.14 | 0 | 0.00 | 0 | 0.00 | 1,237 |
| 23 | McClendon, Deja | 9 | 11 | 1.22 | 6 | 48 | .104 | 1 | 0.11 | 1 | 0 | 0.00 | 0 | 39 | 2 | .510 | 29 | 3.22 | 1 | 0.11 | 0 | 0.00 | 1,218 |
| 24 | Vélez Agosto, Nomaris | 28 | 0 | 0.00 | 0 | 0 | .000 | 21 | 0.75 | 0 | 0 | 0.00 | 0 | 136 | 5 | .540 | 111 | 3.96 | 0 | 0.00 | 0 | 0.00 | 1,210 |
| 25 | Pressley, Yossiana | 23 | 55 | 2.39 | 27 | 171 | .164 | 0 | 0.00 | 1 | 3 | 0.13 | 5 | 73 | 5 | .320 | 51 | 2.22 | 7 | 0.30 | 0 | 0.00 | 1,200 |
| 26 | Johnson, Willow | 28 | 104 | 3.71 | 46 | 283 | .205 | 0 | 0.00 | 1 | 2 | 0.07 | 9 | 1 | 0 | 1.000 | 55 | 1.96 | 12 | 0.43 | 0 | 0.00 | 1,171 |
| 27 | White, Kendall | 27 | 0 | 0.00 | 0 | 0 | .000 | 23 | 0.85 | 0 | 0 | 0.00 | 0 | 148 | 6 | .570 | 103 | 3.81 | 0 | 0.00 | 0 | 0.00 | 1,136 |
| 28 | Watson, Karis | 14 | 20 | 1.43 | 5 | 42 | .357 | 3 | 0.21 | 0 | 2 | 0.14 | 6 | 4 | 2 | .250 | 8 | 0.57 | 3 | 0.21 | 5 | 0.36 | 1,074 |
| 29 | Caffey, Kayla | 22 | 37 | 1.68 | 13 | 70 | .343 | 1 | 0.05 | 0 | 0 | 0.00 | 8 | 5 | 2 | .000 | 10 | 0.45 | 21 | 0.95 | 5 | 0.23 | 1,065 |
| 30 | Gonzaga, Sassá | 13 | 2 | 0.15 | 2 | 15 | .000 | 3 | 0.23 | 0 | 0 | 0.00 | 0 | 39 | 0 | .620 | 35 | 2.69 | 0 | 0.00 | 0 | 0.00 | 998 |
| 31 | Reed, Nia | 15 | 30 | 2.00 | 21 | 125 | .072 | 2 | 0.13 | 0 | 1 | 0.07 | 0 | 0 | 0 | .000 | 31 | 2.07 | 6 | 0.40 | 0 | 0.00 | 969 |
| 32 | Stalzer, Lindsay | 5 | 1 | 0.20 | 2 | 17 | -.059 | 0 | 0.00 | 0 | 0 | 0.00 | 2 | 7 | 2 | .140 | 4 | 0.80 | 0 | 0.00 | 0 | 0.00 | 946 |
| 33 | Brown, Kaz | 25 | 51 | 2.04 | 18 | 123 | .268 | 1 | 0.04 | 0 | 1 | 0.04 | 2 | 3 | 0 | .330 | 6 | 0.24 | 17 | 0.68 | 13 | 0.52 | 889 |
| 34 | Santos, Ray | 7 | 0 | 0.00 | 0 | 0 | .000 | 0 | 0.00 | 0 | 1 | 0.14 | 0 | 0 | 0 | .000 | 1 | 0.14 | 0 | 0.00 | 0 | 0.00 | 877 |
| 35 | Grote, Marin | 1 | 0 | 0.00 | 0 | 2 | .000 | 0 | 0.00 | 0 | 0 | 0.00 | 1 | 0 | 0 | .000 | 0 | 0.00 | 1 | 1.00 | 1 | 1.00 | 786 |
| 36 | Edelman-Cagliari, Nicole | 6 | 1 | 0.17 | 0 | 4 | .250 | 22 | 3.67 | 1 | 0 | 0.00 | 1 | 0 | 0 | .000 | 7 | 1.17 | 1 | 0.17 | 0 | 0.00 | 777 |
| 37 | Abbott, Symone | 2 | 2 | 1.00 | 1 | 8 | .125 | 0 | 0.00 | 0 | 0 | 0.00 | 0 | 1 | 0 | .000 | 0 | 0.00 | 0 | 0.00 | 0 | 0.00 | 764 |
| 38 | Lukes, Katie | 24 | 59 | 2.46 | 38 | 207 | .101 | 5 | 0.21 | 0 | 0 | 0.00 | 7 | 167 | 5 | .460 | 29 | 1.21 | 5 | 0.21 | 0 | 0.00 | 740 |
| 39 | Fairs, Erin | 13 | 21 | 1.62 | 6 | 55 | .273 | 2 | 0.15 | 0 | 0 | 0.00 | 2 | 73 | 7 | .420 | 20 | 1.54 | 2 | 0.15 | 0 | 0.00 | 718 |
| 40 | Fanning, Shelly | 17 | 19 | 1.12 | 6 | 52 | .250 | 3 | 0.18 | 0 | 4 | 0.24 | 4 | 0 | 0 | .000 | 13 | 0.76 | 4 | 0.24 | 8 | 0.47 | 648 |
| 41 | Blossom, Gabby | 11 | 0 | 0.00 | 0 | 0 | .000 | 0 | 0.00 | 0 | 0 | 0.00 | 1 | 0 | 0 | .000 | 1 | 0.09 | 0 | 0.00 | 0 | 0.00 | 617 |
| 42 | Mohler, Blake | 2 | 0 | 0.00 | 1 | 1 | -1.000 | 0 | 0.00 | 0 | 0 | 0.00 | 0 | 0 | 0 | .000 | 0 | 0.00 | 0 | 0.00 | 0 | 0.00 | 528 |
| 43 | Parker-Robinson, Nia | 6 | 12 | 2.00 | 9 | 35 | .086 | 0 | 0.00 | 0 | 1 | 0.17 | 3 | 10 | 0 | .300 | 4 | 0.67 | 0 | 0.00 | 0 | 0.00 | 422 |
| 44 | Schlegel, Maria | 9 | 7 | 0.78 | 4 | 34 | .088 | 1 | 0.11 | 1 | 0 | 0.00 | 3 | 36 | 1 | .640 | 19 | 2.11 | 0 | 0.00 | 0 | 0.00 | 402 |
| 45 | Adekunle, Anota | 1 | 2 | 2.00 | 0 | 3 | .667 | 0 | 0.00 | 0 | 0 | 0.00 | 0 | 0 | 0 | .000 | 0 | 0.00 | 0 | 0.00 | 0 | 0.00 | 236 |

2023 ATHLETES UNLIMITED VOLLEYBALL STATISTICS | WEEK ONE

| RANK | PLAYER | SP | K | K/S | E | ATT. | PCT. | A | A/S | SET E | SA | SA/S | SE | TRA | RE | PCT. | D | D/S | BS | BS/S | BA | BA/S | LPTS |
|------|----------------------------|----|----|------|----|------|-------|-----|-------|-------|----|------|----|-----|----|-------|----|------|----|------|----|------|-------|
| 1 | Edmond, Leah | 9 | 46 | 5.11 | 15 | 97 | .320 | 1 | 0.11 | 0 | 1 | 0.11 | 4 | 84 | 4 | .510 | 21 | 2.33 | 9 | 1.00 | 0 | 0.00 | 1,028 |
| 2 | Linnehan, Alli | 9 | 32 | 3.56 | 7 | 99 | .253 | 2 | 0.22 | 0 | 1 | 0.11 | 2 | 44 | 1 | .480 | 24 | 2.67 | 5 | 0.56 | 0 | 0.00 | 923 |
| 3 | Hentz, Morgan | 9 | 0 | 0.00 | 0 | 0 | .000 | 8 | 0.89 | 0 | 0 | 0.00 | 0 | 31 | 0 | .680 | 57 | 6.33 | 0 | 0.00 | 0 | 0.00 | 881 |
| 4 | Hilley, Sydney | 9 | 6 | 0.67 | 1 | 13 | .385 | 111 | 12.33 | 2 | 2 | 0.22 | 0 | 2 | 0 | .000 | 20 | 2.22 | 7 | 0.78 | 0 | 0.00 | 880 |
| 5 | Hart, Danielle | 9 | 17 | 1.89 | 4 | 45 | .000 | 0 | 0.00 | 0 | 2 | 0.22 | 3 | 3 | 0 | 1.000 | 11 | 1.22 | 12 | 1.33 | 12 | 1.33 | 817 |
| 6 | Collazo, Génesis | 9 | 14 | 1.56 | 7 | 42 | .000 | 2 | 0.22 | 0 | 1 | 0.11 | 0 | 0 | 0 | .000 | 23 | 2.56 | 7 | 0.78 | 0 | 0.00 | 745 |
| 7 | De La Cruz, Bethania | 10 | 47 | 4.70 | 9 | 107 | .355 | 2 | 0.20 | 1 | 6 | 0.60 | 4 | 74 | 2 | .550 | 22 | 2.20 | 1 | 0.10 | 0 | 0.00 | 729 |
| 8 | Rosenthal, Jenna | 9 | 20 | 2.22 | 3 | 48 | .354 | 1 | 0.11 | 0 | 0 | 0.00 | 1 | 1 | 0 | .000 | 6 | 0.67 | 1 | 0.11 | 12 | 1.33 | 675 |
| 9 | Johnson, Willow | 10 | 50 | 5.00 | 15 | 117 | .299 | 0 | 0.00 | 0 | 0 | 0.00 | 4 | 1 | 0 | 1.000 | 18 | 1.80 | 5 | 0.50 | 0 | 0.00 | 590 |
| 10 | Tomkom, Nootsara | 8 | 0 | 0.00 | 0 | 4 | .000 | 88 | 11.00 | 1 | 2 | 0.25 | 0 | 0 | 0 | .000 | 23 | 2.88 | 2 | 0.25 | 0 | 0.00 | 579 |
| 11 | Chaussee, Claire | 8 | 31 | 3.88 | 12 | 89 | .213 | 0 | 0.00 | 0 | 1 | 0.13 | 5 | 63 | 3 | .480 | 18 | 2.25 | 4 | 0.50 | 0 | 0.00 | 578 |
| 12 | McClendon, Deja | 0 | 0 | 0.00 | 0 | 0 | .000 | 0 | 0.00 | 0 | 0 | 0.00 | 0 | 0 | 0 | .000 | 0 | 0.00 | 0 | 0.00 | 0 | 0.00 | 500 |
| 12 | White, Kendall | 9 | 0 | 0.00 | 0 | 0 | .000 | 10 | 1.11 | 0 | 0 | 0.00 | 0 | 41 | 1 | .630 | 34 | 3.78 | 0 | 0.00 | 0 | 0.00 | 500 |
| 12 | Willis, Emma | 0 | 0 | 0.00 | 0 | 0 | .000 | 0 | 0.00 | 0 | 0 | 0.00 | 0 | 0 | 0 | .000 | 0 | 0.00 | 0 | 0.00 | 0 | 0.00 | 500 |
| 15 | Bruns Tegenrot, Taylor | 9 | 0 | 0.00 | 0 | 1 | .000 | 0 | 0.00 | 0 | 0 | 0.00 | 1 | 0 | 0 | .000 | 1 | 0.11 | 0 | 0.00 | 0 | 0.00 | 492 |
| 16 | Childress, Alisha | 10 | 4 | 0.40 | 2 | 15 | .133 | 127 | 12.70 | 2 | 0 | 0.00 | 2 | 0 | 0 | .000 | 27 | 2.70 | 3 | 0.30 | 0 | 0.00 | 485 |
| 17 | Vander Weide, Lindsey | 9 | 22 | 0.00 | 8 | 75 | .000 | 1 | 0.00 | 0 | 1 | 0.00 | 2 | 79 | 4 | .520 | 24 | 0.00 | 1 | 0.00 | 0 | 0.00 | 481 |
| 18 | Bastianelli, Ali | 9 | 22 | 0.00 | 5 | 39 | .000 | 1 | 0.00 | 0 | 3 | 0.00 | 4 | 3 | 0 | .670 | 2 | 0.00 | 1 | 0.00 | 4 | 0.00 | 475 |
| 19 | Cruz, Aury | 7 | 17 | 0.00 | 6 | 43 | .000 | 2 | 0.00 | 0 | 0 | 0.00 | 1 | 36 | 1 | .470 | 11 | 0.00 | 2 | 0.00 | 0 | 0.00 | 439 |
| 20 | Reed, Nia | 7 | 18 | 0.00 | 10 | 71 | .000 | 1 | 0.00 | 0 | 1 | 0.00 | 0 | 0 | 0 | .000 | 12 | 0.00 | 3 | 0.00 | 0 | 0.00 | 433 |
| 21 | Vélez Agosto, Nomaris | 10 | 0 | 0.00 | 0 | 0 | .000 | 8 | 0.80 | 0 | 0 | 0.00 | 0 | 37 | 2 | .570 | 36 | 3.60 | 0 | 0.00 | 0 | 0.00 | 414 |
| 22 | Caffey, Kayla | 9 | 13 | 0.00 | 5 | 23 | .000 | 1 | 0.00 | 0 | 0 | 0.00 | 3 | 3 | 1 | .000 | 6 | 0.00 | 10 | 0.00 | 4 | 0.00 | 407 |
| 23 | Valentin-Anderson, Natalia | 10 | 3 | 0.30 | 1 | 10 | .000 | 91 | 9.10 | 2 | 2 | 0.20 | 1 | 0 | 0 | .000 | 40 | 4.00 | 4 | 0.40 | 0 | 0.00 | 400 |
| 24 | McCage, Molly | 8 | 16 | 0.00 | 3 | 35 | .000 | 1 | 0.00 | 0 | 0 | 0.00 | 6 | 0 | 0 | .000 | 3 | 0.00 | 2 | 0.00 | 5 | 0.00 | 374 |
| 25 | Nuneviller, Brooke | 10 | 29 | 0.00 | 8 | 79 | .000 | 1 | 0.00 | 0 | 1 | 0.00 | 2 | 58 | 1 | .550 | 22 | 0.00 | 1 | 0.00 | 0 | 0.00 | 364 |
| 26 | Stalzer, Lindsay | 0 | 0 | 0.00 | 0 | 0 | .000 | 0 | 0.00 | 0 | 0 | 0.00 | 0 | 0 | 0 | .000 | 0 | 0.00 | 0 | 0.00 | 0 | 0.00 | 360 |
| 27 | Pressley, Yossiana | 8 | 17 | 2.13 | 11 | 61 | .098 | 0 | 0.00 | 0 | 0 | 0.00 | 0 | 41 | 2 | .370 | 9 | 1.13 | 2 | 0.25 | 0 | 0.00 | 359 |
| 28 | Hippe, Saskia | 10 | 37 | 3.70 | 16 | 105 | .000 | 2 | 0.20 | 0 | 0 | 0.00 | 2 | 0 | 0 | .000 | 27 | 2.70 | 1 | 0.10 | 0 | 0.00 | 321 |
| 29 | Edelman-Cagliari, Nicole | 4 | 1 | 0.00 | 0 | 4 | .000 | 12 | 0.00 | 1 | 0 | 0.00 | 1 | 0 | 0 | .000 | 5 | 0.00 | 1 | 0.00 | 0 | 0.00 | 317 |
| 30 | Gonzaga, Sassá | 4 | 1 | 0.25 | 2 | 6 | -.167 | 0 | 0.00 | 0 | 0 | 0.00 | 0 | 8 | 0 | .630 | 7 | 1.75 | 0 | 0.00 | 0 | 0.00 | 309 |
| 31 | Grote, Marin | 1 | 0 | 0.00 | 0 | 2 | .000 | 0 | 0.00 | 0 | 0 | 0.00 | 1 | 0 | 0 | .000 | 0 | 0.00 | 1 | 1.00 | 1 | 1.00 | 286 |
| 32 | Brown, Kaz | 7 | 15 | 2.14 | 5 | 38 | .263 | 0 | 0.00 | 0 | 0 | 0.00 | 2 | 0 | 0 | .000 | 1 | 0.14 | 9 | 1.29 | 2 | 0.29 | 279 |
| 33 | Watson, Karis | 10 | 11 | 1.10 | 3 | 26 | .000 | 1 | 0.10 | 0 | 1 | 0.10 | 5 | 2 | 1 | .500 | 6 | 0.60 | 1 | 0.10 | 3 | 0.30 | 274 |
| 34 | Benson, Amanda | 10 | 0 | 0.00 | 0 | 0 | .000 | 12 | 1.20 | 0 | 0 | 0.00 | 0 | 56 | 3 | .550 | 26 | 2.60 | 0 | 0.00 | 0 | 0.00 | 248 |
| 35 | Dixon, Tori | 10 | 15 | 0.00 | 5 | 38 | .000 | 2 | 0.00 | 0 | 2 | 0.00 | 1 | 2 | 0 | .500 | 8 | 0.00 | 3 | 0.00 | 3 | 0.00 | 242 |
| 36 | Adekunle, Anota | 1 | 2 | 0.00 | 0 | 3 | .000 | 0 | 0.00 | 0 | 0 | 0.00 | 0 | 0 | 0 | .000 | 0 | 0.00 | 0 | 0.00 | 0 | 0.00 | 236 |
| 37 | Blossom, Gabby | 6 | 0 | 0.00 | 0 | 0 | .000 | 0 | 0.00 | 0 | 0 | 0.00 | 0 | 0 | 0 | .000 | 1 | 0.17 | 0 | 0.00 | 0 | 0.00 | 225 |
| 38 | Fairs, Erin | 5 | 0 | 0.00 | 0 | 0 | .000 | 1 | 0.20 | 0 | 0 | 0.00 | 0 | 8 | 1 | .000 | 4 | 0.80 | 0 | 0.00 | 0 | 0.00 | 223 |
| 39 | Abbott, Symone | 0 | 0 | 0.00 | 0 | 0 | .000 | 0 | 0.00 | 0 | 0 | 0.00 | 0 | 0 | 0 | .000 | 0 | 0.00 | 0 | 0.00 | 0 | 0.00 | 220 |
| 40 | Schlegel, Maria | 5 | 3 | 0.60 | 3 | 12 | .000 | 0 | 0.00 | 0 | 0 | 0.00 | 1 | 16 | 1 | .630 | 6 | 1.20 | 0 | 0.00 | 0 | 0.00 | 98 |
| 41 | Santos, Ray | 3 | 0 | 0.00 | 0 | 0 | .000 | 0 | 0.00 | 0 | 1 | 0.33 | 0 | 0 | 0 | .000 | 0 | 0.00 | 0 | 0.00 | 0 | 0.00 | 92 |
| 42 | Fanning, Shelly | 3 | 4 | 0.00 | 3 | 12 | .083 | 0 | 0.00 | 0 | 0 | 0.00 | 0 | 0 | 0 | .000 | 0 | 0.00 | 1 | 0.00 | 1 | 0.00 | 90 |
| 43 | Lukes, Katie | 9 | 13 | 1.44 | 16 | 58 | -.052 | 3 | 0.33 | 0 | 0 | 0.00 | 4 | 59 | 0 | .490 | 11 | 1.22 | 1 | 0.11 | 0 | 0.00 | 86 |
| 44 | Parker-Robinson, Nia | 2 | 5 | 2.50 | 4 | 16 | .063 | 0 | 0.00 | 0 | 0 | 0.00 | 0 | 10 | 0 | .300 | 1 | 0.50 | 0 | 0.00 | 0 | 0.00 | 83 |

2023 ATHLETES UNLIMITED VOLLEYBALL STATISTICS | WEEK TWO

| RANK | PLAYER | SP | K | K/S | E | ATT. | PCT. | A | A/S | SET E | SA | SA/S | SE | TRA | RE | PCT. | D | D/S | BS | BS/S | BA | BA/S | LPTS |
|------|----------------------------|----|----|------|----|------|--------|-----|-------|-------|----|------|----|-----|----|------|----|------|----|------|----|------|-------|
| 1 | De La Cruz, Bethania | 9 | 53 | 5.89 | 8 | 111 | .405 | 1 | 0.11 | 1 | 4 | 0.44 | 2 | 60 | 2 | .500 | 24 | 2.67 | 2 | 0.22 | 0 | 0.00 | 1,145 |
| 2 | Nuneviller, Brooke | 9 | 31 | 3.44 | 3 | 84 | .333 | 1 | 0.11 | 0 | 1 | 0.11 | 3 | 57 | 4 | .510 | 34 | 3.78 | 0 | 0.00 | 0 | 0.00 | 941 |
| 3 | Valentin-Anderson, Natalia | 9 | 3 | 0.33 | 0 | 6 | .500 | 126 | 14.00 | 1 | 7 | 0.78 | 4 | 0 | 0 | .000 | 28 | 3.11 | 3 | 0.33 | 0 | 0.00 | 860 |
| 4 | Hentz, Morgan | 9 | 0 | 0.00 | 0 | 0 | .000 | 11 | 1.22 | 0 | 0 | 0.00 | 0 | 33 | 2 | .580 | 43 | 4.78 | 0 | 0.00 | 0 | 0.00 | 835 |
| 5 | Chaussee, Claire | 9 | 49 | 5.44 | 13 | 126 | .286 | 0 | 0.00 | 0 | 1 | 0.11 | 8 | 71 | 4 | .540 | 23 | 2.56 | 4 | 0.44 | 0 | 0.00 | 819 |
| 6 | Hippe, Saskia | 9 | 29 | 3.22 | 12 | 83 | .205 | 1 | 0.11 | 0 | 4 | 0.44 | 4 | 0 | 0 | .000 | 22 | 2.44 | 4 | 0.44 | 0 | 0.00 | 803 |
| 7 | Rosenthal, Jenna | 9 | 21 | 2.33 | 2 | 44 | .432 | 0 | 0.00 | 0 | 1 | 0.11 | 1 | 4 | 0 | .250 | 10 | 1.11 | 4 | 0.44 | 0 | 0.00 | 748 |
| 8 | Edmond, Leah | 9 | 44 | 4.89 | 10 | 105 | .324 | 5 | 0.56 | 0 | 2 | 0.22 | 1 | 82 | 7 | .440 | 36 | 4.00 | 4 | 0.44 | 0 | 0.00 | 709 |
| 9 | Cruz, Aury | 9 | 16 | 1.78 | 5 | 53 | .208 | 1 | 0.11 | 0 | 3 | 0.33 | 1 | 47 | 0 | .620 | 29 | 3.22 | 1 | 0.11 | 0 | 0.00 | 634 |
| 10 | Pressley, Yossiana | 9 | 22 | 2.44 | 6 | 54 | .296 | 0 | 0.00 | 1 | 3 | 0.33 | 3 | 0 | 0 | .000 | 28 | 3.11 | 1 | 0.11 | 0 | 0.00 | 611 |
| 11 | Hilley, Sydney | 9 | 5 | 0.56 | 2 | 15 | .200 | 110 | 12.22 | 2 | 3 | 0.33 | 1 | 1 | 0 | .000 | 13 | 1.44 | 1 | 0.11 | 0 | 0.00 | 586 |
| 12 | Willis, Emma | 9 | 11 | 1.22 | 3 | 23 | .348 | 2 | 0.22 | 0 | 1 | 0.11 | 4 | 0 | 0 | .000 | 2 | 0.22 | 2 | 0.22 | 6 | 0.67 | 580 |
| 13 | McCage, Molly | 9 | 27 | 3.00 | 4 | 52 | .442 | 2 | 0.22 | 0 | 1 | 0.11 | 2 | 0 | 0 | .000 | 10 | 1.11 | 6 | 0.67 | 3 | 0.33 | 574 |
| 14 | Dixon, Tori | 9 | 15 | 1.67 | 1 | 32 | .438 | 1 | 0.11 | 0 | 0 | 0.00 | 1 | 4 | 0 | .500 | 10 | 1.11 | 5 | 0.56 | 2 | 0.22 | 539 |
| 15 | Santos, Ray | 3 | 0 | 0.00 | 0 | 0 | .000 | 0 | 0.00 | 0 | 0 | 0.00 | 0 | 0 | 0 | .000 | 1 | 0.33 | 0 | 0.00 | 0 | 0.00 | 505 |
| 16 | Stalzer, Lindsay | 1 | 0 | 0.00 | 0 | 0 | .000 | 0 | 0.00 | 0 | 0 | 0.00 | 0 | 0 | 0 | .000 | 0 | 0.00 | 0 | 0.00 | 0 | 0.00 | 500 |
| 16 | Vander Weide, Lindsey | 2 | 0 | 0.00 | 0 | 1 | .000 | 0 | 0.00 | 0 | 0 | 0.00 | 0 | 0 | 0 | .000 | 0 | 0.00 | 0 | 0.00 | 0 | 0.00 | 500 |
| 16 | Watson, Karis | 0 | 0 | 0.00 | 0 | 0 | .000 | 0 | 0.00 | 0 | 0 | 0.00 | 0 | 0 | 0 | .000 | 0 | 0.00 | 0 | 0.00 | 0 | 0.00 | 500 |
| 19 | Benson, Amanda | 9 | 0 | 0.00 | 0 | 0 | .000 | 3 | 0.33 | 0 | 0 | 0.00 | 0 | 52 | 3 | .670 | 28 | 3.11 | 0 | 0.00 | 0 | 0.00 | 495 |
| 20 | Lukes, Katie | 7 | 32 | 4.57 | 8 | 88 | .273 | 1 | 0.14 | 0 | 0 | 0.00 | 3 | 65 | 2 | .480 | 15 | 2.14 | 2 | 0.29 | 0 | 0.00 | 494 |
| 21 | Childress, Alisha | 9 | 5 | 0.56 | 0 | 11 | .455 | 114 | 12.67 | 5 | 1 | 0.11 | 3 | 0 | 0 | .000 | 30 | 3.33 | 0 | 0.00 | 0 | 0.00 | 452 |
| 22 | Caffey, Kayla | 6 | 12 | 2.00 | 4 | 24 | .333 | 0 | 0.00 | 0 | 0 | 0.00 | 2 | 0 | 0 | .000 | 1 | 0.17 | 6 | 1.00 | 0 | 0.00 | 449 |
| 23 | Vélez Agosto, Nomaris | 9 | 0 | 0.00 | 0 | 0 | .000 | 6 | 0.67 | 0 | 0 | 0.00 | 0 | 42 | 3 | .600 | 37 | 4.11 | 0 | 0.00 | 0 | 0.00 | 425 |
| 24 | Fanning, Shelly | 9 | 12 | 1.33 | 3 | 32 | .281 | 2 | 0.22 | 0 | 4 | 0.44 | 3 | 0 | 0 | .000 | 12 | 1.33 | 3 | 0.33 | 5 | 0.56 | 412 |
| 25 | Hart, Danielle | 3 | 6 | 2.00 | 1 | 19 | .263 | 0 | 0.00 | 0 | 0 | 0.00 | 1 | 0 | 0 | .000 | 2 | 0.67 | 2 | 0.67 | 0 | 0.00 | 382 |
| 26 | Gonzaga, Sassá | 1 | 0 | 0.00 | 0 | 2 | .000 | 0 | 0.00 | 0 | 0 | 0.00 | 0 | 3 | 0 | .670 | 2 | 2.00 | 0 | 0.00 | 0 | 0.00 | 334 |
| 27 | McClendon, Deja | 3 | 5 | 1.67 | 3 | 20 | .100 | 0 | 0.00 | 0 | 0 | 0.00 | 0 | 9 | 0 | .560 | 11 | 3.67 | 0 | 0.00 | 0 | 0.00 | 329 |
| 28 | Edelman-Cagliari, Nicole | 0 | 0 | 0.00 | 0 | 0 | .000 | 0 | 0.00 | 0 | 0 | 0.00 | 0 | 0 | 0 | .000 | 0 | 0.00 | 0 | 0.00 | 0 | 0.00 | 320 |
| 29 | Collazo, Génesis | 8 | 12 | 1.50 | 8 | 49 | .082 | 0 | 0.00 | 0 | 0 | 0.00 | 0 | 0 | 0 | .000 | 12 | 1.50 | 3 | 0.38 | 0 | 0.00 | 316 |
| 30 | Reed, Nia | 1 | 0 | 0.00 | 1 | 2 | -.500 | 0 | 0.00 | 0 | 0 | 0.00 | 0 | 0 | 0 | .000 | 0 | 0.00 | 0 | 0.00 | 0 | 0.00 | 308 |
| 31 | Bruns Tegenrot, Taylor | 7 | 6 | 0.86 | 0 | 16 | .375 | 49 | 7.00 | 1 | 1 | 0.14 | 1 | 0 | 0 | .000 | 15 | 2.14 | 3 | 0.43 | 0 | 0.00 | 260 |
| 32 | White, Kendall | 9 | 0 | 0.00 | 0 | 0 | .000 | 5 | 0.56 | 0 | 0 | 0.00 | 0 | 55 | 4 | .600 | 39 | 4.33 | 0 | 0.00 | 0 | 0.00 | 258 |
| 33 | Parker-Robinson, Nia | 2 | 2 | 1.00 | 2 | 7 | .000 | 0 | 0.00 | 0 | 1 | 0.50 | 1 | 0 | 0 | .000 | 2 | 1.00 | 0 | 0.00 | 0 | 0.00 | 226 |
| 34 | Johnson, Willow | 9 | 29 | 3.22 | 16 | 87 | .149 | 0 | 0.00 | 1 | 2 | 0.22 | 3 | 0 | 0 | .000 | 21 | 2.33 | 4 | 0.44 | 0 | 0.00 | 221 |
| 35 | Grote, Marin | 0 | 0 | 0.00 | 0 | 0 | .000 | 0 | 0.00 | 0 | 0 | 0.00 | 0 | 0 | 0 | .000 | 0 | 0.00 | 0 | 0.00 | 0 | 0.00 | 220 |
| 36 | Brown, Kaz | 9 | 19 | 2.11 | 6 | 38 | .342 | 0 | 0.00 | 0 | 0 | 0.00 | 0 | 1 | 0 | .000 | 3 | 0.33 | 6 | 0.67 | 4 | 0.44 | 215 |
| 37 | Blossom, Gabby | 4 | 0 | 0.00 | 0 | 0 | .000 | 0 | 0.00 | 0 | 0 | 0.00 | 1 | 0 | 0 | .000 | 0 | 0.00 | 0 | 0.00 | 0 | 0.00 | 212 |
| 38 | Fairs, Erin | 8 | 21 | 2.63 | 6 | 55 | .273 | 1 | 0.13 | 0 | 0 | 0.00 | 2 | 66 | 7 | .470 | 16 | 2.00 | 2 | 0.25 | 0 | 0.00 | 203 |
| 39 | Linnehan, Alli | 9 | 19 | 2.11 | 14 | 95 | .053 | 3 | 0.33 | 0 | 1 | 0.11 | 0 | 59 | 4 | .470 | 12 | 1.33 | 5 | 0.56 | 0 | 0.00 | 167 |
| 40 | Tomkom, Nootsara | 8 | 0 | 0.00 | 0 | 2 | .000 | 33 | 4.13 | 1 | 1 | 0.13 | 1 | 0 | 0 | .000 | 16 | 2.00 | 0 | 0.00 | 0 | 0.00 | 145 |
| 41 | Schlegel, Maria | 3 | 4 | 1.33 | 1 | 22 | .136 | 1 | 0.33 | 1 | 0 | 0.00 | 2 | 20 | 0 | .650 | 13 | 4.33 | 0 | 0.00 | 0 | 0.00 | 124 |
| 42 | Bastianelli, Ali | 9 | 5 | 0.56 | 6 | 35 | -.029 | 1 | 0.11 | 0 | 0 | 0.00 | 4 | 0 | 0 | .000 | 3 | 0.33 | 6 | 0.67 | 8 | 0.89 | 80 |
| 43 | Abbott, Symone | 1 | 1 | 1.00 | 1 | 5 | .000 | 0 | 0.00 | 0 | 0 | 0.00 | 0 | 0 | 0 | .000 | 0 | 0.00 | 0 | 0.00 | 0 | 0.00 | 36 |
| 44 | Mohler, Blake | 1 | 0 | 0.00 | 1 | 1 | -1.000 | 0 | 0.00 | 0 | 0 | 0.00 | 0 | 0 | 0 | .000 | 0 | 0.00 | 0 | 0.00 | 0 | 0.00 | 28 |

2023 ATHLETES UNLIMITED VOLLEYBALL STATISTICS | WEEK THREE

| RANK | PLAYER | SP | K | K/S | E | ATT. | PCT. | A | A/S | SET E | SA | SA/S | SE | TRA | RE | PCT. | D | D/S | BS | BS/S | BA | BA/S | LPTS |
|------|--------------------------|----|----|------|----|------|-------|-----|-------|-------|----|------|----|-----|----|------|----|------|----|------|----|------|-------|
| 1 | Linnehan, Alli | 9 | 37 | 4.11 | 4 | 93 | .355 | 4 | 0.44 | 0 | 1 | 0.11 | 3 | 36 | 0 | .610 | 21 | 2.33 | 7 | 0.78 | 0 | 0.00 | 1,053 |
| 2 | McCage, Molly | 9 | 32 | 3.56 | 2 | 51 | .588 | 0 | 0.00 | 0 | 1 | 0.11 | 3 | 2 | 0 | .000 | 8 | 0.89 | 3 | 0.33 | 4 | 0.44 | 944 |
| 3 | Edmond, Leah | 9 | 49 | 5.44 | 13 | 111 | .324 | 0 | 0.00 | 0 | 1 | 0.11 | 3 | 77 | 0 | .420 | 33 | 3.67 | 7 | 0.78 | 0 | 0.00 | 877 |
| 4 | Vander Weide, Lindsey | 9 | 26 | 2.89 | 8 | 81 | .222 | 2 | 0.22 | 0 | 4 | 0.44 | 3 | 88 | 2 | .520 | 12 | 1.33 | 4 | 0.44 | 0 | 0.00 | 854 |
| 5 | Bastianelli, Ali | 9 | 15 | 1.67 | 1 | 35 | .400 | 2 | 0.22 | 0 | 1 | 0.11 | 3 | 0 | 0 | .000 | 7 | 0.78 | 10 | 1.11 | 10 | 1.11 | 773 |
| 6 | Tomkom, Nootsara | 9 | 3 | 0.33 | 0 | 4 | .750 | 95 | 10.56 | 4 | 0 | 0.00 | 4 | 2 | 2 | .000 | 31 | 3.44 | 0 | 0.00 | 0 | 0.00 | 750 |
| 7 | Collazo, Génesis | 9 | 19 | 2.11 | 8 | 63 | .175 | 1 | 0.11 | 0 | 0 | 0.00 | 2 | 0 | 0 | .000 | 26 | 2.89 | 6 | 0.67 | 0 | 0.00 | 743 |
| 8 | Hentz, Morgan | 9 | 0 | 0.00 | 0 | 1 | .000 | 9 | 1.00 | 0 | 0 | 0.00 | 0 | 25 | 2 | .720 | 32 | 3.56 | 0 | 0.00 | 0 | 0.00 | 701 |
| 9 | Nuneviller, Brooke | 9 | 40 | 4.44 | 9 | 108 | .287 | 0 | 0.00 | 1 | 2 | 0.22 | 3 | 55 | 0 | .510 | 27 | 3.00 | 1 | 0.11 | 0 | 0.00 | 583 |
| 10 | Dixon, Tori | 9 | 9 | 1.00 | 2 | 23 | .304 | 1 | 0.11 | 0 | 0 | 0.00 | 1 | 3 | 0 | .330 | 3 | 0.33 | 10 | 1.11 | 7 | 0.78 | 572 |
| 11 | Bruns Tegenrot, Taylor | 9 | 1 | 0.11 | 0 | 4 | .250 | 11 | 1.22 | 0 | 0 | 0.00 | 1 | 0 | 0 | .000 | 2 | 0.22 | 2 | 0.22 | 0 | 0.00 | 545 |
| 11 | Valentin-Anderson, Natal | 9 | 6 | 0.67 | 0 | 13 | .462 | 107 | 11.89 | 4 | 0 | 0.00 | 3 | 0 | 0 | .000 | 30 | 3.33 | 1 | 0.11 | 0 | 0.00 | 545 |
| 13 | Hilley, Sydney | 9 | 5 | 0.56 | 0 | 15 | .333 | 98 | 10.89 | 1 | 1 | 0.11 | 2 | 0 | 0 | .000 | 39 | 4.33 | 1 | 0.11 | 0 | 0.00 | 529 |
| 14 | Hippe, Saskia | 8 | 23 | 2.88 | 9 | 70 | .200 | 0 | 0.00 | 0 | 1 | 0.13 | 4 | 0 | 0 | .000 | 21 | 2.63 | 3 | 0.38 | 0 | 0.00 | 517 |
| 15 | Abbott, Symone | 1 | 1 | 1.00 | 0 | 3 | .333 | 0 | 0.00 | 0 | 0 | 0.00 | 0 | 1 | 0 | .000 | 0 | 0.00 | 0 | 0.00 | 0 | 0.00 | 508 |
| 16 | Mohler, Blake | 1 | 0 | 0.00 | 0 | 0 | .000 | 0 | 0.00 | 0 | 0 | 0.00 | 0 | 0 | 0 | .000 | 0 | 0.00 | 0 | 0.00 | 0 | 0.00 | 500 |
| 17 | Benson, Amanda | 9 | 0 | 0.00 | 0 | 0 | .000 | 6 | 0.67 | 0 | 0 | 0.00 | 0 | 42 | 1 | .600 | 34 | 3.78 | 0 | 0.00 | 0 | 0.00 | 494 |
| 18 | Chaussee, Claire | 9 | 44 | 4.89 | 19 | 144 | .174 | 0 | 0.00 | 0 | 0 | 0.00 | 4 | 80 | 2 | .500 | 24 | 2.67 | 1 | 0.11 | 0 | 0.00 | 420 |
| 19 | Cruz, Aury | 9 | 22 | 2.44 | 12 | 71 | .141 | 1 | 0.11 | 1 | 1 | 0.11 | 2 | 49 | 0 | .630 | 41 | 4.56 | 1 | 0.11 | 0 | 0.00 | 416 |
| 20 | Brown, Kaz | 9 | 17 | 1.89 | 7 | 47 | .213 | 1 | 0.11 | 0 | 1 | 0.11 | 0 | 2 | 0 | .500 | 2 | 0.22 | 2 | 0.22 | 7 | 0.78 | 395 |
| 21 | McClendon, Deja | 6 | 6 | 1.00 | 3 | 28 | .107 | 1 | 0.17 | 1 | 0 | 0.00 | 0 | 30 | 2 | .500 | 18 | 3.00 | 1 | 0.17 | 0 | 0.00 | 389 |
| 22 | White, Kendall | 9 | 0 | 0.00 | 0 | 0 | .000 | 8 | 0.89 | 0 | 0 | 0.00 | 0 | 52 | 1 | .500 | 30 | 3.33 | 0 | 0.00 | 0 | 0.00 | 378 |
| 23 | Vélez Agosto, Nomaris | 9 | 0 | 0.00 | 0 | 0 | .000 | 7 | 0.78 | 0 | 0 | 0.00 | 0 | 57 | 0 | .470 | 38 | 4.22 | 0 | 0.00 | 0 | 0.00 | 371 |
| 24 | Johnson, Willow | 9 | 25 | 2.78 | 15 | 79 | .127 | 0 | 0.00 | 0 | 0 | 0.00 | 2 | 0 | 0 | .000 | 16 | 1.78 | 3 | 0.33 | 0 | 0.00 | 360 |
| 25 | Childress, Alisha | 9 | 2 | 0.22 | 0 | 9 | .222 | 90 | 10.00 | 2 | 4 | 0.44 | 1 | 0 | 0 | .000 | 21 | 2.33 | 1 | 0.11 | 0 | 0.00 | 359 |
| 26 | Gonzaga, Sassá | 8 | 1 | 0.13 | 0 | 7 | .143 | 3 | 0.38 | 0 | 0 | 0.00 | 0 | 28 | 0 | .610 | 26 | 3.25 | 0 | 0.00 | 0 | 0.00 | 355 |
| 27 | Willis, Emma | 8 | 15 | 1.88 | 5 | 32 | .313 | 1 | 0.13 | 0 | 1 | 0.13 | 2 | 1 | 0 | .000 | 12 | 1.50 | 1 | 0.13 | 2 | 0.25 | 313 |
| 28 | Watson, Karis | 4 | 9 | 2.25 | 2 | 16 | .438 | 2 | 0.50 | 0 | 1 | 0.25 | 1 | 2 | 1 | .000 | 2 | 0.50 | 2 | 0.50 | 2 | 0.50 | 300 |
| 29 | Fairs, Erin | 0 | 0 | 0.00 | 0 | 0 | .000 | 0 | 0.00 | 0 | 0 | 0.00 | 0 | 0 | 0 | .000 | 0 | 0.00 | 0 | 0.00 | 0 | 0.00 | 280 |
| 29 | Grote, Marin | 0 | 0 | 0.00 | 0 | 0 | .000 | 0 | 0.00 | 0 | 0 | 0.00 | 0 | 0 | 0 | .000 | 0 | 0.00 | 0 | 0.00 | 0 | 0.00 | 280 |
| 29 | Santos, Ray | 1 | 0 | 0.00 | 0 | 0 | .000 | 0 | 0.00 | 0 | 0 | 0.00 | 0 | 0 | 0 | .000 | 0 | 0.00 | 0 | 0.00 | 0 | 0.00 | 280 |
| 32 | Hart, Danielle | 6 | 14 | 2.33 | 5 | 31 | .290 | 3 | 0.50 | 0 | 1 | 0.17 | 3 | 4 | 0 | .250 | 3 | 0.50 | 2 | 0.33 | 2 | 0.33 | 268 |
| 33 | Rosenthal, Jenna | 9 | 18 | 2.00 | 7 | 46 | .239 | 1 | 0.11 | 1 | 2 | 0.22 | 1 | 4 | 1 | .500 | 6 | 0.67 | 4 | 0.44 | 3 | 0.33 | 261 |
| 34 | Pressley, Yossiana | 6 | 16 | 2.67 | 10 | 56 | .107 | 0 | 0.00 | 0 | 0 | 0.00 | 2 | 32 | 3 | .250 | 14 | 2.33 | 4 | 0.67 | 0 | 0.00 | 230 |
| 35 | Reed, Nia | 7 | 12 | 1.71 | 10 | 52 | .038 | 1 | 0.14 | 0 | 0 | 0.00 | 0 | 0 | 0 | .000 | 19 | 2.71 | 3 | 0.43 | 0 | 0.00 | 228 |
| 36 | Caffey, Kayla | 7 | 12 | 1.71 | 4 | 23 | .348 | 0 | 0.00 | 0 | 0 | 0.00 | 3 | 2 | 1 | .000 | 3 | 0.43 | 5 | 0.71 | 1 | 0.14 | 209 |
| 37 | Blossom, Gabby | 1 | 0 | 0.00 | 0 | 0 | .000 | 0 | 0.00 | 0 | 0 | 0.00 | 0 | 0 | 0 | .000 | 0 | 0.00 | 0 | 0.00 | 0 | 0.00 | 180 |
| 37 | Schlegel, Maria | 1 | 0 | 0.00 | 0 | 0 | .000 | 0 | 0.00 | 0 | 0 | 0.00 | 0 | 0 | 0 | .000 | 0 | 0.00 | 0 | 0.00 | 0 | 0.00 | 180 |
| 39 | Lukes, Katie | 8 | 14 | 1.75 | 14 | 61 | .000 | 1 | 0.13 | 0 | 0 | 0.00 | 0 | 43 | 3 | .370 | 3 | 0.38 | 2 | 0.25 | 0 | 0.00 | 160 |
| 40 | Fanning, Shelly | 5 | 3 | 1.00 | 0 | 8 | .500 | 1 | 0.00 | 0 | 0 | 1.00 | 1 | 0 | 0 | .000 | 1 | 0.00 | 0 | 0.00 | 2 | 1.00 | 146 |
| 41 | Edelman-Cagliari, Nicole | 2 | 0 | 0.00 | 0 | 0 | .000 | 10 | 0.00 | 0 | 0 | 0.00 | 0 | 0 | 0 | .000 | 2 | 0.00 | 0 | 0.00 | 0 | 0.00 | 140 |
| 42 | Parker-Robinson, Nia | 2 | 5 | 0.00 | 3 | 12 | .000 | 0 | 0.00 | 0 | 0 | 0.00 | 2 | 0 | 0 | .000 | 1 | 0.00 | 0 | 0.00 | 0 | 0.00 | 113 |
| 43 | Stalzer, Lindsay | 4 | 1 | 1.60 | 2 | 17 | -.030 | 0 | 0.00 | 0 | 0 | 0.00 | 2 | 7 | 2 | .140 | 4 | 0.60 | 0 | 0.20 | 0 | 0.00 | 86 |

2023 ATHLETES UNLIMITED VOLLEYBALL CAPTAIN WEEK-BY-WEEK RESULTS

WEEK ONE: OCTOBER 6-9

| TEAM DE LA CRUZ | | | TEAM VALENTIN-ANDERSON | | | TEAM NOOTSARA | | | TEAM EDMOND | | |
|-------------------------------------|------------------------|---------------|---|-----------------|---------------|----------------------------------|------------------------|----------|--------------------------------|------------------------|----------|
| Captain: Bethania De La Cruz | | | Captain: Natalia Valentin-Anderson | | | Captain: Nootsara Tomkom | | | Captain: Leah Edmond | | |
| Facilitator: Kayla Banwarth | | | Facilitator: Brandon Directo | | | Facilitator: Stephen Gbur | | | Facilitator: Dave Rubio | | |
| Date | Opponent | Score | Date | Opponent | Score | Date | Opponent | Score | Date | Opponent | Score |
| 10/6 | Team Edmond | L, 77-73 | 10/6 | Team Nootsara | L, 75-63 | 10/6 | Team Valentin-Anderson | W, 75-63 | 10/6 | Team De La Cruz | W, 77-73 |
| 10/8 | Team Nootsara | L, 70-69 | 10/8 | Team Edmond | L, 75-58 | 10/8 | Team De La Cruz | W, 70-69 | 10/8 | Team Valentin-Anderson | W, 75-58 |
| 10/9 | Team Valentin-Anderson | W, 74-72 (GS) | 10/9 | Team De La Cruz | L, 74-72 (GS) | 10/9 | Team Edmond | L, 75-44 | 10/9 | Team Nootsara | W, 75-44 |

WEEK TWO: OCTOBER 13-16

| TEAM EDMOND | | | TEAM LINNEHAN | | | TEAM HENTZ | | | TEAM HILLEY | | |
|-------------------------------------|---------------|----------|----------------------------------|-------------|----------|--------------------------------|---------------|----------|------------------------------------|---------------|----------|
| Captain: Leah Edmond | | | Captain: Alli Linnehan | | | Captain: Morgan Hentz | | | Captain: Sydney Hilley | | |
| Facilitator: Brandon Directo | | | Facilitator: Stephen Gbur | | | Facilitator: Dave Rubio | | | Facilitator: Kayla Banwarth | | |
| Date | Opponent | Score | Date | Opponent | Score | Date | Opponent | Score | Date | Opponent | Score |
| 10/13 | Team Hilley | L, 74-62 | 10/13 | Team Hentz | L, 76-51 | 10/13 | Team Linnehan | W, 76-51 | 10/13 | Team Edmond | W, 74-62 |
| 10/15 | Team Hentz | L, 73-64 | 10/15 | Team Hilley | L, 75-53 | 10/15 | Team Edmond | W, 73-64 | 10/15 | Team Linnehan | W, 75-53 |
| 10/16 | Team Linnehan | W, 69-63 | 10/16 | Team Edmond | L, 69-63 | 10/16 | Team Hilley | W, 78-55 | 10/16 | Team Hentz | L, 78-55 |

WEEK THREE: OCTOBER 20-23

| TEAM EDMOND | | | TEAM HENTZ | | | TEAM HILLEY | | | TEAM ROSENTHAL | | |
|----------------------------------|----------------|----------|--------------------------------|----------------|----------|------------------------------------|----------------|----------|-------------------------------------|-------------|----------|
| Captain: Leah Edmond | | | Captain: Morgan Hentz | | | Captain: Sydney Hilley | | | Captain: Jenna Rosenthal | | |
| Facilitator: Stephen Gbur | | | Facilitator: Dave Rubio | | | Facilitator: Kayla Banwarth | | | Facilitator: Brandon Directo | | |
| Date | Opponent | Score | Date | Opponent | Score | Date | Opponent | Score | Date | Opponent | Score |
| 10/20 | Team Rosenthal | W, 71-68 | 10/20 | Team Hilley | W, 75-55 | 10/20 | Team Hentz | L, 75-55 | 10/20 | Team Edmond | L, 71-68 |
| 10/22 | Team Hilley | W, 72-60 | 10/22 | Team Rosenthal | W, 73-60 | 10/22 | Team Edmond | L, 72-60 | 10/22 | Team Hentz | L, 73-60 |
| 10/23 | Team Hentz | L, 75-47 | 10/23 | Team Edmond | W, 75-47 | 10/23 | Team Rosenthal | W, 72-59 | 10/23 | Team Hilley | L, 72-59 |

WEEK FOUR: OCTOBER 27-30

| TEAM EDMOND | | | TEAM HENTZ | | | TEAM LINNEHAN | | | TEAM HILLEY | | |
|--------------------------------|---------------|-------|------------------------------------|---------------|-------|-------------------------------------|-------------|-------|----------------------------------|---------------|-------|
| Captain: Leah Edmond | | | Captain: Morgan Hentz | | | Captain: Alli Linnehan | | | Captain: Sydney Hilley | | |
| Facilitator: Dave Rubio | | | Facilitator: Kayla Banwarth | | | Facilitator: Brandon Directo | | | Facilitator: Stephen Gbur | | |
| Date | Opponent | Score | Date | Opponent | Score | Date | Opponent | Score | Date | Opponent | Score |
| 10/27 | Team Hilley | | 10/27 | Team Linnehan | | 10/27 | Team Hentz | | 10/27 | Team Edmond | |
| 10/29 | Team Linnehan | | 10/29 | Team Hilley | | 10/29 | Team Edmond | | 10/29 | Team Hentz | |
| 10/30 | Team Hentz | | 10/30 | Team Edmond | | 10/30 | Team Hilley | | 10/30 | Team Linnehan | |

WEEK FIVE: NOVEMBER 3-6

| TEAM TBA | | | TEAM TBA | | | TEAM TBA | | | TEAM TBA | | |
|------------------------------------|----------|-------|-------------------------------------|----------|-------|----------------------------------|----------|-------|--------------------------------|----------|-------|
| Captain: TBA | | | Captain: TBA | | | Captain: TBA | | | Captain: TBA | | |
| Facilitator: Kayla Banwarth | | | Facilitator: Brandon Directo | | | Facilitator: Stephen Gbur | | | Facilitator: Dave Rubio | | |
| Date | Opponent | Score | Date | Opponent | Score | Date | Opponent | Score | Date | Opponent | Score |
| 11/3 | | | 11/3 | | | 11/3 | | | 11/3 | | |
| 11/5 | | | 11/5 | | | 11/5 | | | 11/5 | | |
| 11/6 | | | 11/6 | | | 11/6 | | | 11/6 | | |

2023 ATHLETES UNLIMITED VOLLEYBALL DRAFT RESULTS (BY TEAM ORDER)

WEEK ONE: OCTOBER 6-9

| ROUND | TEAM DE LA CRUZ (GOLD) | TEAM VALENTIN-ANDERSON (ORANGE) | TEAM NOOTSARA (BLUE) | TEAM EDMOND (PURPLE) |
|---------|---------------------------|---------------------------------|-----------------------------|---------------------------|
| Captain | Bethania De La Cruz (OH) | Natalia Valentin-Anderson (S) | Nootsara Tomkom (S) | Leah Edmond (OH) |
| 1 | Alisha Childress (S) | Brooke Nuneviller (OH) | Yossiana Pressley (OH) | Alli Linnehan (OH) |
| 2 | Willow Johnson (OPP) | Saskia Hippe (OPP) | Molly McCage (MB) | Danielle Hart (MB) |
| 3 | Anota Adekunle (MB) | Shelly Fanning (MB) | Claire Chaussee (OH) | Morgan Hentz (L) |
| 4 | Nomaris Vélez Agosto (L) | Katie Lukes (OH) | Ali Bastianelli (MB) | Sydney Hilley (S) |
| 5 | Lindsey Vander Weide (OH) | Tori Dixon (MB) | Kendall White (L) | Jenna Rosenthal (MB) |
| 6 | Karis Watson (MB) | Maria Schlegel (OH) | Nia Reed (OPP) | Génesis Collazo (OPP) |
| 7 | Gabby Blossom (S) | Kaz Brown (MB) | Aury Cruz (OH) | Taylor Bruns Tegenrot (S) |
| 8 | Erin Fairs (OH) | Nia Parker-Robinson (OH) | Nicole Edelman-Cagliari (S) | Deja McClendon (OH) |
| 9 | Kayla Caffey (MB) | Amanda Benson (L) | Sassá Gonzaga (OH) | Emma Willis (MB) |
| 10 | Symone Abbott (OPP) | Ray Santos (S) | Marin Grote (MB) | Lindsay Stalzer (OH) |

WEEK TWO: OCTOBER 13-16

| ROUND | TEAM EDMOND (GOLD) | TEAM LINNEHAN (ORANGE) | TEAM HENTZ (BLUE) | TEAM HILLEY (PURPLE) |
|---------|--------------------------|---------------------------|-------------------------------|-----------------------------|
| Captain | Leah Edmond (OH) | Alli Linnehan (OH) | Morgan Hentz (L) | Sydney Hilley (S) |
| 1 | Alisha Childress (S) | Willow Johnson (OPP) | Bethania De La Cruz (OH) | Claire Chaussee (OH) |
| 2 | Molly McCage (MB) | Nootsara Tomkom (S) | Brooke Nuneviller (OH) | Yossiana Pressley (OH) |
| 3 | Génesis Collazo (OPP) | Ali Bastianelli (MB) | Jenna Rosenthal (MB) | Danielle Hart (MB) |
| 4 | Nomaris Vélez Agosto (L) | Kendall White (L) | Natalia Valentin-Anderson (S) | Aury Cruz (OH) |
| 5 | Shelly Fanning (MB) | Kaz Brown (MB) | Saskia Hippe (OPP) | Tori Dixon (MB) |
| 6 | Katie Lukes (OH) | Maria Schlegel (OH) | Emma Willis (MB) | Nia Reed (OPP) |
| 7 | Deja McClendon (OH) | Taylor Bruns Tegenrot (S) | Karis Watson (MB) | Sassá Gonzaga (OH) |
| 8 | Gabby Blossom (S) | Erin Fairs (OH) | Lindsey Vander Weide (OH) | Nicole Edelman-Cagliari (S) |
| 9 | Nia Parker-Robinson (OH) | Symone Abbott (OPP) | Lindsay Stalzer (OH) | Kayla Caffey (MB) |
| 10 | Marin Grote (MB) | - | Ray Santos (S) | Amanda Benson (L) |

Note: Blake Mohler was added to the roster on October 11 and assigned to Team Linnehan

WEEK THREE: OCTOBER 20-23

| ROUND | TEAM EDMOND (GOLD) | TEAM HENTZ (ORANGE) | TEAM HILLEY (BLUE) | TEAM ROSENTHAL (PURPLE) |
|---------|-------------------------------|---------------------------|------------------------|-----------------------------|
| Captain | Leah Edmond (OH) | Morgan Hentz (L) | Sydney Hilley (S) | Jenna Rosenthal (MB) |
| 1 | Natalia Valentin-Anderson (S) | Alli Linnehan (OH) | Brooke Nuneviller (OH) | Claire Chaussee (OH) |
| 2 | Saskia Hippe (OPP) | Molly McCage (MB) | Willow Johnson (OPP) | Alisha Childress (S) |
| 3 | Kaz Brown (MB) | Ali Bastianelli (MB) | Danielle Hart (MB) | Aury Cruz (OH) |
| 4 | Yossiana Pressley (OH) | Lindsey Vander Weide (OH) | Katie Lukes (OH) | Nomaris Vélez Agosto (L) |
| 5 | Tori Dixon (MB) | Nootsara Tomkom (S) | Emma Willis (MB) | Nia Reed (OPP) |
| 6 | Deja McClendon (OH) | Génesis Collazo (OPP) | Sassá Gonzaga (OH) | Lindsay Stalzer (OH) |
| 7 | Amanda Benson (L) | Taylor Bruns Tegenrot (S) | Karis Watson (MB) | Shelly Fanning (MB) |
| 8 | Erin Fairs (OH) | Symone Abbott (OPP) | Gabby Blossom (S) | Nia Parker-Robinson (OH) |
| 9 | Ray Santos (S) | Blake Mohler (MB) | Maria Schlegel (OH) | Kayla Caffey (MB) |
| 10 | Marin Grote (MB) | - | Kendall White (L) | Nicole Edelman-Cagliari (S) |

Note: Bethania De La Cruz was not available for selection due to national team commitments at Pan American Games.

WEEK FOUR: OCTOBER 27-30

| ROUND | TEAM EDMOND (GOLD) | TEAM HENTZ (ORANGE) | TEAM LINNEHAN (BLUE) | TEAM HILLEY (PURPLE) |
|---------|-------------------------------|--------------------------|---------------------------|-----------------------------|
| Captain | Leah Edmond (OH) | Morgan Hentz (L) | Alli Linnehan (OH) | Sydney Hilley (S) |
| 1 | Natalia Valentin-Anderson (S) | Brooke Nuneviller (OH) | Molly McCage (MB) | Claire Chaussee (OH) |
| 2 | Lindsey Vander Weide (OH) | Bethania De La Cruz (OH) | Nootsara Tomkom (S) | Yossiana Pressley (OH) |
| 3 | Ali Bastianelli (MB) | Tori Dixon (MB) | Willow Johnson (OPP) | Jenna Rosenthal (MB) |
| 4 | Génesis Collazo (OPP) | Saskia Hippe (OPP) | Karis Watson (MB) | Aury Cruz (OH) |
| 5 | Kaz Brown (MB) | Blake Mohler (MB) | Katie Lukes (OH) | Emma Willis (MB) |
| 6 | Kendall White (L) | Alisha Childress (S) | Nomaris Vélez Agosto (L) | Kayla Caffey (MB) |
| 7 | Symone Abbott (OPP) | Sassá Gonzaga (OH) | Taylor Bruns Tegenrot (S) | Deja McClendon (OH) |
| 8 | Ray Santos (S) | Lindsay Stalzer (OH) | Shelly Fanning (MB) | Nia Reed (OPP) |
| 9 | Maria Schlegel (OH) | Marin Grote (MB) | Nia Parker-Robinson (OH) | Nicole Edelman-Cagliari (S) |
| 10 | Danielle Hart (MB) | Gabby Blossom (S) | Erin Fairs (OH) | Amanda Benson (L) |

WEEK FIVE: NOVEMBER 3-6

| ROUND | TEAM TBA (GOLD) | TEAM TBA (ORANGE) | TEAM TBA (BLUE) | TEAM TBA (PURPLE) |
|---------|-----------------|-------------------|-----------------|-------------------|
| Captain | | | | |
| 1 | | | | |
| 2 | | | | |
| 3 | | | | |
| 4 | | | | |
| 5 | | | | |
| 6 | | | | |
| 7 | | | | |
| 8 | | | | |
| 9 | | | | |
| 10 | | | | |

2023 ATHLETES UNLIMITED VOLLEYBALL DRAFT RESULTS (BY OVERALL ORDER)

| DRAFT PICK | Week 1 | Week 2 | Week 3 | Week 4 | Week 5 |
|------------|-------------------------------|-------------------------------|-------------------------------|-------------------------------|--------|
| Captain | Bethania De La Cruz (OH) | Leah Edmond (OH) | Leah Edmond (OH) | Leah Edmond (OH) | |
| Captain | Natalia Valentin-Anderson (S) | Alli Linnehan (OH) | Morgan Hentz (L) | Morgan Hentz (L) | |
| Captain | Nootsara Tomkom (S) | Morgan Hentz (L) | Sydney Hilley (S) | Alli Linnehan (OH) | |
| Captain | Leah Edmond (OH) | Sydney Hilley (S) | Jenna Rosenthal (MB) | Sydney Hilley (S) | |
| 1 | Alli Linnehan (OH) | Claire Chaussee (OH) | Claire Chaussee (OH) | Claire Chaussee (OH) | |
| 2 | Yossiana Pressley (OH) | Bethania De La Cruz (OH) | Brooke Nuneviller (OH) | Molly McCage (MB) | |
| 3 | Brooke Nuneviller (OH) | Willow Johnson (OPP) | Alli Linnehan (OH) | Brooke Nuneviller (OH) | |
| 4 | Alisha Childress (S) | Alisha Childress (S) | Natalia Valentin-Anderson (S) | Natalia Valentin-Anderson (S) | |
| 5 | Willow Johnson (OPP) | Molly McCage (MB) | Saskia Hippe (OPP) | Lindsey Vander Weide (OH) | |
| 6 | Saskia Hippe (OPP) | Nootsara Tomkom (S) | Molly McCage (MB) | Bethania De La Cruz (OH) | |
| 7 | Molly McCage (MB) | Brooke Nuneviller (OH) | Willow Johnson (OPP) | Nootsara Tomkom (S) | |
| 8 | Danielle Hart (MB) | Yossiana Pressley (OH) | Alisha Childress (S) | Yossiana Pressley (OH) | |
| 9 | Morgan Hentz (L) | Danielle Hart (MB) | Aury Cruz (OH) | Jenna Rosenthal (MB) | |
| 10 | Claire Chaussee (OH) | Jenna Rosenthal (MB) | Danielle Hart (MB) | Willow Johnson (OPP) | |
| 11 | Shelly Fanning (MB) | Ali Bastianelli (MB) | Ali Bastianelli (MB) | Tori Dixon (MB) | |
| 12 | Anota Adekunle (MB) | Génesis Collazo (OPP) | Kaz Brown (MB) | Ali Bastianelli (MB) | |
| 13 | Nomaris Vélez Agosto (L) | Nomaris Vélez Agosto (L) | Yossiana Pressley (OH) | Génesis Collazo (OPP) | |
| 14 | Katie Lukes (OH) | Kendall White (L) | Lindsey Vander Weide (OH) | Saskia Hippe (OPP) | |
| 15 | Ali Bastianelli (MB) | Natalia Valentin-Anderson (S) | Katie Lukes (OH) | Karis Watson (MB) | |
| 16 | Sydney Hilley (S) | Aury Cruz (OH) | Nomaris Vélez Agosto (L) | Aury Cruz (OH) | |
| 17 | Jenna Rosenthal (MB) | Tori Dixon (MB) | Nia Reed (OPP) | Emma Willis (MB) | |
| 18 | Kendall White (L) | Saskia Hippe (OPP) | Emma Willis (MB) | Katie Lukes (OH) | |
| 19 | Tori Dixon (MB) | Kaz Brown (MB) | Nootsara Tomkom (S) | Blake Mohler (MB) | |
| 20 | Lindsey Vander Weide (OH) | Shelly Fanning (MB) | Tori Dixon (MB) | Kaz Brown (MB) | |
| 21 | Karis Watson (MB) | Katie Lukes (OH) | Deja McClendon (OH) | Kendall White (L) | |
| 22 | Maria Schlegel (OH) | Maria Schlegel (OH) | Génesis Collazo (OPP) | Alisha Childress (S) | |
| 23 | Nia Reed (OPP) | Emma Willis (MB) | Sassá Gonzaga (OH) | Nomaris Vélez Agosto (L) | |
| 24 | Génesis Collazo (OPP) | Nia Reed (OPP) | Lindsay Stalzer (OH) | Kayla Caffey (MB) | |
| 25 | Taylor Bruns Tegenrot (S) | Sassá Gonzaga (OH) | Shelly Fanning (MB) | Deja McClendon (OH) | |
| 26 | Aury Cruz (OH) | Karis Watson (MB) | Karis Watson (MB) | Taylor Bruns Tegenrot (S) | |
| 27 | Kaz Brown (MB) | Taylor Bruns Tegenrot (S) | Taylor Bruns Tegenrot (S) | Sassá Gonzaga (OH) | |
| 28 | Gabby Blossom (S) | Deja McClendon (OH) | Amanda Benson (L) | Symone Abbott (OPP) | |
| 29 | Erin Fairs (OH) | Gabby Blossom (S) | Erin Fairs (OH) | Ray Santos (S) | |
| 30 | Nia Parker-Robinson (OH) | Erin Fairs (OH) | Symone Abbott (OPP) | Lindsay Stalzer (OH) | |
| 31 | Nicole Edelman-Cagliari (S) | Lindsey Vander Weide (OH) | Gabby Blossom (S) | Shelly Fanning (MB) | |
| 32 | Deja McClendon (OH) | Nicole Edelman-Cagliari (S) | Nia Parker-Robinson (OH) | Nia Reed (OPP) | |
| 33 | Emma Willis (MB) | Kayla Caffey (MB) | Kayla Caffey (MB) | Nicole Edelman-Cagliari (S) | |
| 34 | Sassá Gonzaga (OH) | Lindsay Stalzer (OH) | Maria Schlegel (OH) | Nia Parker-Robinson (OH) | |
| 35 | Amanda Benson (L) | Symone Abbott (OPP) | Blake Mohler (MB) | Marin Grote (MB) | |
| 36 | Kayla Caffey (MB) | Nia Parker-Robinson (OH) | Ray Santos (S) | Maria Schlegel (OH) | |
| 37 | Symone Abbott (OPP) | Marin Grote (MB) | Marin Grote (MB) | Danielle Hart (MB) | |
| 38 | Ray Santos (S) | Ray Santos (S) | Kendall White (L) | Gabby Blossom (S) | |
| 39 | Marin Grote (MB) | Amanda Benson (L) | Nicole Edelman-Cagliari (S) | Erin Fairs (OH) | |
| 40 | Lindsay Stalzer (OH) | - | - | Amanda Benson (L) | |

Note: Blake Mohler was added to the roster on October 11 and assigned to Team Linnehan for Week Two

2023 ATHLETES UNLIMITED VOLLEYBALL HEADSHOT ROSTER (NUMERICAL - OCTOBER 15)



00 Amanda
BENSON



1 Kendall
WHITE



2 Brooke
NUNEVILLER



3 Danielle
HART



4 Ray
SANTOS



5 Molly
McCAGE



6 Alisha
CHILDRESS



7 Erin
FAIRST



8 Sydney
HILLEY



9 Sassa
GONZAGA



10 Kaz
BROWN



11 Claire
CHAUSSEE



12 Leah
EDMOND



13 Nootsara
TOMKOM



14 Nicole
EDELMAN-CAGLIARI



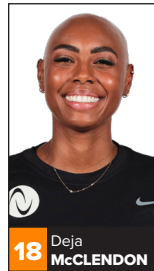
15 Katie
LUKES



16 Jenna
ROSENTHAL



17 Taylor
BRUNS TEGENROT



18 Deja
McCLELLAND



20 Blake
MOHLER



21 Lindsey
VANDER WEIDE



22 Yossiana
PRESSLEY



23 Tori
DIXON



24 Aury
CRUZ



26 Maria
SCHLEGEL



27 Natalia
VALENTIN-ANDERSON



28 Kayla
CAFFEY



29 Lindsay
STALZER



31 Gabby
BLOSSOM



32 Nia
PARKER-ROBINSON



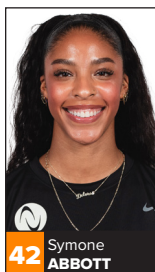
33 Nia
REED



37 Alli
LINNEHAN



40 Nomaris
VÉLEZ AGOSTO



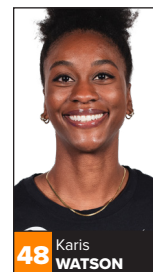
42 Symone
ABBOTT



44 Willow
JOHNSON



46 Morgan
HENTZ



48 Karis
WATSON



54 Emma
WILLIS



55 Ali
BASTIANELLI



77 Genesis
COLLAZO



81 Bethania
DE LA CRUZ



88 Marin
GROTE



91 Saskia
HIPPE



97 Shelly
FANNING



Kayla
BANWARTH



Brandon
DIRECTO



Stephen
GBUR



Dave
RUBIO