

GAME NOTES

2023 VOLLEYBALL • MATCH DAY #7 • OCTOBER 20, 2023

Team Hilley vs. Team Hentz • 4 p.m. Arizona Time • ESPN+
Team Edmond vs. Team Rosenthal • 6:30 p.m. Arizona Time • ESPN+



AUProSports.com • Twitter: @auprosports • Instagram: @AUProVolleyball • Facebook: Athletes Unlimited

2023 LEADERBOARD

| POS. | +/- | PLAYER | TOTAL |
|------|-----|---------------------------|-------|
| 1 | 6 | Bethania De La Cruz | 1,874 |
| 2 | -1 | Leah Edmond | 1,737 |
| 3 | 0 | Morgan Hentz | 1,716 |
| 4 | 0 | Sydney Hilley | 1,466 |
| 5 | 3 | Jenna Rosenthal | 1,423 |
| 6 | 5 | Claire Chaussee | 1,397 |
| 7 | 18 | Brooke Nuneviller | 1,305 |
| 8 | 14 | Natalia Valentin-Anderson | 1,260 |
| 9 | -4 | Danielle Hart | 1,199 |
| 10 | 18 | Saskia Hippe | 1,124 |
| 11 | -9 | Alli Linnehan | 1,090 |
| 12 | 0 | Emma Willis | 1,080 |
| 13 | 6 | Aury Cruz | 1,073 |
| 14 | -8 | Génesis Collazo | 1,061 |
| 15 | 3 | Lindsay Vander Weide | 981 |
| 16 | 10 | Yossiana Pressley | 970 |
| 17 | 7 | Molly McCage | 948 |
| 18 | -2 | Alisha Childress | 937 |
| 19 | 8 | Lindsay Stalzer | 860 |
| 20 | 3 | Kayla Caffey | 856 |
| 21 | 0 | Nomaris Vélez Agosto | 839 |
| 22 | -10 | Deja McClendon | 829 |
| 23 | -14 | Willow Johnson | 811 |
| 24 | 10 | Tori Dixon | 781 |
| 25 | 6 | Karis Watson | 774 |
| 26 | -14 | Kendall White | 758 |
| 27 | -12 | Taylor Bruns Tegenrot | 752 |
| 28 | 5 | Amanda Benson | 743 |
| 29 | -9 | Nia Reed | 741 |
| 30 | -20 | Nootsara Tomkom | 724 |
| 31 | -1 | Sassá Gonzaga | 643 |
| 32 | -4 | Nicole Edelman-Cagliari | 637 |
| 33 | 8 | Ray Santos | 597 |
| 34 | 9 | Katie Lukes | 580 |
| 35 | -18 | Ali Bastianelli | 555 |
| 36 | -5 | Marin Grote | 506 |
| 37 | 5 | Shelly Fanning | 502 |
| 38 | -3 | Kaz Brown | 494 |
| 39 | -2 | Gabby Blossom | 437 |
| 40 | -2 | Erin Fairs | 426 |
| 41 | 3 | Nia Parker-Robinson | 309 |
| 42 | -3 | Symone Abbott | 256 |
| 43 | -7 | Anota Adekunle | 236 |
| 44 | -4 | Maria Schlegel | 222 |
| 45 | 0 | Blake Mohler | 108 |

ASPIRATION ACES

70

Aspiration is committed to planting 10 trees for every service ace recorded during the 2023 Athletes Unlimited Volleyball season. There were **213 aces** during the 2022 campaign.

Aspiration ACES

VOLLEYBALL

ATHLETES UNLIMITED

WELCOME TO THE CLUB: Middle blocker **Jenna Rosenthal** will lead the Purple team during Week Three, becoming the 22nd different player in Athletes Unlimited Volleyball history to lead a weekly squad ... Rosenthal will also be the eighth different captain through three weeks this season.

🌀 Rosenthal stands as the third middle blocker in the league's three-year history to serve as a captain, joining **Lianna Sybeldon** and **Lauren Stivrins** ... Sybeldon posted a 3-0 record as captain during Week One of the inaugural 2021 season, while Stivrins was 1-2 as a captain of the Purple squad in Week Two last season.

TOTAL RECALL: Outside hitter **Bethania De La Cruz** will not play in Week Three after being recalled by the Dominican Republic National Team to compete in the Pan American Games, which take place from October 21-26 in Santiago, Chile ... It will mark the first time De La Cruz has missed a match in her Athletes Unlimited Volleyball career.

🌀 De La Cruz, the league leader with 1,874 points through the first two weeks, will be awarded the minimum win points for Week Three per league policy.

SWEET 16: Libero **Morgan Hentz** and middle blockers **Jenna Rosenthal** and **Emma Willis** have posted an impressive 16-2 set record through the first two weeks of the season and lead the league with 1,000 win points ... All three players posted an 8-1 set record with Team Edmond in Week One before combining to guide Team Hentz to a similar 8-1 mark in Week Two.

🌀 Middle blocker **Molly Lohman** and opposite **Erica Wilson** share the league record for set wins in a single season after posting a 30-15 mark during the 2021 campaign ... Middle blocker **Ronika Stone** set the Athletes Unlimited Volleyball single-season win points record after collecting 1,880 win points during the 2022 season.

SWEEP DREAMS: Each of the first six match days this season has featured at least one win points sweep after Team Hentz's 78-55 verdict over Team Hilley in the opening match of Monday's doubleheader ... The 23-point win also marked the 22nd win points sweep in Athletes Unlimited Volleyball history.

🌀 The 2021 season featured 10 win points sweep in 30 matches, while teams authored six sweeps during the 2022 campaign.

PURPLE POWER: Teams wearing the Purple jersey have won 5-of-6 matches this season after Team Hilley's 78-55 loss to Team Hentz on Monday evening ... The Purple jersey has outscored its opponents by an average of 17.2 points in the five victories, including a league-record 31-point triumph by Team Edmond to close Week One.

🌀 The Purple jersey was tied with the Orange jersey for the best record in the league (9-6) during the 2022 Athletes Unlimited Volleyball season ... In the league's three seasons, the Purple jersey has collected a 23-13 (.639) record.

🌀 Entering Friday's doubleheader, teams wearing the Purple jersey own a combined .515 winning percentage in all Athletes Unlimited sports, which is the best mark of the four jersey colors.

ORANGE CRUSH: Teams in the Orange jersey have lost their last nine Athletes Unlimited Volleyball matches dating back to last season after Team Linnehan's 69-63 loss to Team Edmond to close Week One on Monday night ... Team De La Cruz was the last squad to win while wearing the Orange top, defeating Team Drews by a 73-64 count on April 9, 2022, at Fair Park Coliseum.

🌀 After posting a 9-6 record during the inaugural 2021 season, the Orange jersey has authored a 5-16 (.238) mark over the last two campaigns.

ON SECOND THOUGHT: Outside hitter **Bethania De La Cruz** compiled 1,145 leaderboard points in Week Two to secure the top spot on the league's leaderboard ... The 1,145 points stand as the third-highest weekly total by a player in league history, including the most during Week Two competition ... In 12 weeks of Athletes Unlimited Volleyball play, there have been nine times where a player recorded 1,000 or more points in a single week.

🌀 De La Cruz, the league's all-time leaderboard points leader, has posted five of the top 10 weekly point totals in league history, including a league-record 1,291 points during the final week of the 2022 season en route to winning the league title.

700 CLUB: Setter **Natalia Valentin-Anderson** became the first player in league history to accrue 700 career assists after closing Week Two with a league-high 126 assists in three matches ... Valentin-Anderson notched 40 or more assists in all three matches, including a season-high 43 assists in Team Hentz's win against Team Linnehan last Friday night.

🌀 Valentin-Anderson, who has 760 career assists, joins **Alisha Childress** and **Nootsara Tomkom** as the only players in league history to collect at least 40 assists in three or more straight outings.

CENTURY MARK: Libero **Morgan Hentz** has collected 100 digs through her first six matches, setting a league record for most digs in the first two weeks of a season ... Hentz, who has at least 13 digs in each match this season, surpassed the previous record of 88 digs she set in the first two weeks last season.

🌀 Hentz, who also owns the Athletes Unlimited Volleyball single-season record, begins Week Three in third place on the league's career digs ledger (329) ... She trails outside hitter **Bethania De La Cruz** by just two digs for second place in league history.

HAPPY BIRTHDAY: Outside hitter **Lindsay Vander Weide** celebrated her birthday on Thursday.

TEAM EDMOND (0-0)

Captain Leah Edmond
2023 Record as Captain 4-2
Career Record as Captain 6-6
Facilitator Stephen Gbur

Oct. 20 vs. Team Rosenthal 6:30 p.m. AZ
Oct. 22 vs. Team Hilley 6:30 p.m. AZ
Oct. 23 vs. Team Hentz 6:30 p.m. AZ

TEAM HENTZ (0-0)

Captain Morgan Hentz
2023 Record as Captain 3-0
Career Record as Captain 3-0
Facilitator Dave Rubio

Oct. 20 vs. Team Hilley 4 p.m. AZ
Oct. 22 vs. Team Rosenthal 4 p.m. AZ
Oct. 23 vs. Team Edmond 6:30 p.m. AZ

TEAM HILLEY (0-0)

Captain Sydney Hilley
2023 Record as Captain 2-1
Career Record as Captain 2-1
Facilitator Kayla Banwarth

Oct. 20 vs. Team Hentz 4 p.m. AZ
Oct. 22 vs. Team Edmond 6:30 p.m. AZ
Oct. 23 vs. Team Rosenthal 4 p.m. AZ

TEAM ROSENTHAL (0-0)

Captain Jenna Rosenthal
2023 Record as Captain 0-0
Career Record as Captain 0-0
Facilitator Brandon Directo

Oct. 20 vs. Team Edmond 6:30 p.m. AZ
Oct. 22 vs. Team Hentz 4 p.m. AZ
Oct. 23 vs. Team Hilley 4 p.m. AZ

RECORD BY JERSEY COLOR

| Week | One | Two | Three | Four | Five |
|--------|-----|-----|-------|------|------|
| Gold | 1-2 | 1-2 | - | - | - |
| Orange | 0-3 | 0-3 | - | - | - |
| Blue | 2-1 | 3-0 | - | - | - |
| Purple | 3-0 | 2-1 | - | - | - |

2023 STATISTICAL LEADERS

Kills Bethania De La Cruz (100)
Attack Attempts Bethania De La Cruz (218)
Hitting Percentage* Molly McCage (.414)
Assists Alisha Childress (241)
Service Aces Bethania De La Cruz (10)
Reception Attempts Leah Edmond (166)
Digs Morgan Hentz (100)
Solo Blocks Kayla Caffey (16)
Block Assists Three players (12)
Leaderboard Pts. Bethania De La Cruz (1,874)
Win Pts. Three players (1,000)
Stat Pts. Bethania De La Cruz (934)
MVP Pts. Bethania De La Cruz (220)

* - Minimum 40 attempts

VOLLEYBALL MEDIA CENTER PAGE



WEEKLY SCHEDULE AND FAN INFORMATION

| Date | Match | Time/Score | Broadcast | Ticket Promotion | Giveaway | Post-Match Activities |
|------------|---|--------------|-----------|------------------|---------------------------|---------------------------------|
| October 20 | Team Hilley (Blue) vs. Team Hentz (Orange) | 4 p.m. AZ | ESPN+ | - | AU Topps Cards Pack (250) | Autographs |
| | Team Edmond (Gold) vs. Team Rosenthal (Purple) | 6:30 p.m. AZ | ESPN+ | - | AU Topps Cards Pack (250) | Autographs; Serve on the Court |
| October 22 | Team Rosenthal (Purple) vs. Team Hentz (Orange) | 4 p.m. AZ | ESPNU | - | ECO Wheat Cup (250) | Autographs |
| | Team Hilley (Blue) vs. Team Edmond (Gold) | 6:30 p.m. AZ | ESPNU | - | ECU Wheat Cup (250) | Autographs; Pepper on the Court |
| October 23 | Team Rosenthal (Purple) vs. Team Hilley (Blue) | 4 p.m. AZ | ESPN+ | \$5 Kids Tickets | - | Autographs |
| | Team Hentz (Orange) vs. Team Edmond (Gold) | 6:30 p.m. AZ | ESPNU | \$5 Kids Tickets | - | Autographs; Photo on the Court |

Designated home team listed second on schedule • All matches are played at Legacy Park (Mesa, Ariz.) • Dates, times and broadcast designations are subject to change

WHO WE ARE

Athletes Unlimited is a new model of professional sports where athletes are decision makers and individual players are champions of team sports. We literally change the game with faster play and fluid teams, delivering next-level competition and engagement in which every moment counts. Athletes Unlimited began in 2020 with Women's Softball and followed with Women's Volleyball (2021), Women's Lacrosse (2021), Women's Basketball (2022) and AUX Softball (2022). Athletes Unlimited is building the next generation of both athletes and fans.

Our athletes are in charge of their team and league decisions, and of their individual success. We reboot rosters and gameplay to create fast and exciting competition that speaks to contemporary sports fans, bringing them close to the action and the athletes in games where every moment counts. We incorporate the player-centric model that fans love about fantasy sports. We use digital media platforms and cutting-edge technology to connect fans deeply to athletes at the top of their game on and off the field, and to the game itself.

HOW THE TEAMS ARE SELECTED

A draft will be held prior to each week's matches with the top four players in the individual leaderboard serving as the team captains. The captains will then fill their rosters by selecting 10 other players. Each draft will be held on the Tuesday before the week's matches.

Uniform colors will be assigned based on the team captain's rank on the leaderboard. The top-scoring captain's team will wear gold, while the second-highest point scorer's team dons orange jerseys. The third-place team will wear blue jerseys and the fourth-place team will wear purple jerseys.

Each team will consist of 11 players, including five PINs (outside hitters and opposite hitters), two setters, three middle blockers and one libero.

RULES OF INTEREST

Match Duration: Each Athletes Unlimited volleyball match consists of three (3) sets regardless of whether a team wins two sets in the match. A set is won when a team scores 25 or more points while winning by a margin of two (2) points or more.

Golden Set: In the event the match score is tied after three (3) sets, a "Golden Set" will be played to determine the match winner. The "Golden Set" will be won by the team which scores five (5) points while winning by a two-point margin or when a team reaches 10 total points.

Substitutions: Teams are limited to a maximum of six (6) substitutions in each set. In the event any match requires a "Golden Set," teams will be permitted no more than two (2) substitutions for the additional set.

Timeouts: Each team is permitted a maximum of two (2) timeouts per set with each timeout lasting two minutes (2:00). In the event a "Golden Set" is necessary, each team will be given one (1) timeout for the additional set.

Media Timeouts: A media timeout of three minutes (3:00) will take place when a team scores 15 points in a set during regulation. There will not be a media timeout in a "Golden Set."

Time Between Sets: A timeout of five (5) minutes will take place between each set.

Captain's Challenges: A captain may initiate replay review of certain events subject to the provisions of the rule as set out below. Replay reviews triggered under this rule shall be referred to as a 'Captain's Challenge', or 'Challenge' for short.

Each team is entitled to two (2) challenges per set. In the event a "Golden Set" is played, each team will be granted one (1) challenge.

A team may use a Challenge to initiate replay review of the following events:

- 🌀 Whether a ball is in or out
- 🌀 Block touch
- 🌀 Service line fault
- 🌀 3-meter line fault
- 🌀 Center line fault
- 🌀 Net touch

Any called fault, violation, or other decision by the match officials not listed above, or any non-call, is not a challengeable event.

Officials' Reviews: Match officials may initiate a replay review of the same specific events as "Captain's Challenge" under the guidelines below. Replay reviews triggered under this rule shall be referred to as an "Officials' Review."

An Officials' Review can only occur during a set when one team has reached 20 points or during a "Golden Set." In addition, there are no limits on the number of "Officials' Reviews" and they can be called regardless of whether a team has any remaining "Captain's Challenges" in the set.

INDIVIDUAL LEADERBOARD

While traditional volleyball statistics are kept during each Athletes Unlimited match, players earn individual points by accumulating those statistics. Points accumulated by statistics, set and/or match wins and MVP selections are used to create an individual leaderboard, which determines captains for each week and the individual champion at the end of the season.

Points are awarded at the following increments during the match:

| | |
|----------------|------------|
| Service Ace | +12 Points |
| Block | +12 Points |
| Kill | +8 Points |
| Dig | +5 Points |
| Good Pass | +2 Points |
| Block Assist * | +2 Points |
| Assist | +1 Point |
| Service Error | -8 Points |
| Attack Error | -12 Points |
| Set Error | -12 Points |
| Pass Error | -12 Points |

* - Middle blockers only

In the event a set requires more than 50 points to determine a winner, stat points will not be recorded for any stats after the 50-point mark in the set. In addition, if a match requires overtime or a "Golden Set," the stats accumulated during the "Golden Set" do not earn any individual points for the athletes on the leaderboard. There are also no additional team set win points for the "Golden Set."

In addition, athletes will be awarded 40 individual points if their team wins a single set. If the teams score the same number of points in a set, the points carry over to the next set.

Athletes on the winning team in each match will be awarded 60 individual points toward the individual leaderboard. The total score determines the overall match winner, which means a team may lose two sets, but win the overall match.

Example: The Gold Team loses the first two sets 25-23 and 25-23 to the Blue Team, but wins the last set, 25-17. The Gold Team wins the overall match points because they had the larger overall score, 71-67.

A total of three MVPs will be selected following each game by the athletes with the top player earning 60 points. The second MVP receives 40 points, while the third MVP claims 20 points.

MEDALS

The top four players on the final leaderboard in addition to the Defensive Player of the Year will receive a medal designed and fabricated for Athletes Unlimited by Lisa Issenberg, founder of Kiitellä, inc. The front face of the medal represents the identity of Athletes Unlimited, while the back face of the medal leans into the specific sport, the year, location and words about Athletes Unlimited's vision, mission and values on and off the field - Excellence in Community and Leadership.

ATHLETE COMPENSATION

Athletes are compensated in three ways during an Athletes Unlimited season, including base pay, win bonuses (set and match wins) and a leaderboard bonus. Athletes Unlimited also makes an additional donation equal to the athlete's win bonus to their selected cause partner.

POSTSEASON AWARDS

At the conclusion of the 2023 Athletes Unlimited Volleyball season, the following awards will be presented during the closing ceremony:

- 🌀 Medals to top four finishers on leaderboard
- 🌀 Defensive Player of the Year
- 🌀 Sportsmanship Award
- 🌀 Athletes Unlimited All-Position Team (top players at each position)

The All-Position Team will include one setter, one libero, one opposite, two middle blockers and two outside hitters.

THE BOOK OF UNLIMITED

The Book of Unlimited was designed, handmade and bound for Athletes Unlimited and serves as a record keeper of its leagues. The book, which was handmade by Tikhon Verygyn in his studio in Kyiv, Ukraine, weighs nearly 25 pounds, measures approximately 12" by 18" and contains nearly 500 pages. The champion, along with all who competed, are inscribed into the book. In addition, The Book of Unlimited also contains a history of achievements in Athletes Unlimited, including stories, highlights and events.

The book is opened during the Opening Ceremony for each season and is closed after the champion is named and her name is inscribed into the book. The tradition began during Athletes Unlimited Softball's inaugural season in 2020.

2023 ATHLETES UNLIMITED VOLLEYBALL ACTIVE ROSTER (NUMERICAL ORDER)

| NO. | NAME | POS. | HT. | HOMETOWN | COLLEGE | PRONOUNS | PRONUNCIATION | INSTAGRAM | TWITTER |
|-----|---------------------------|------|------|-----------------------------------|---------------------------------|----------|-------------------------------------|-------------------|-----------------|
| 00 | Amanda Benson | L | 5-7 | Litchfield Park, Ariz. | Oregon | She/Her | | amandasbenson | abenson_10 |
| 1 | Kendall White | L | 5-7 | Zionsville, Ind. | Penn State | She/Her | | kbaby10 | - |
| 2 | Brooke Nuneviller | OH | 5-11 | Chandler, Ariz. | Oregon | She/Her | none-uh-vill-uhr | brooke_nuneviller | brookeyy_5 |
| 3 | Danielle Hart | MB | 6-4 | Virginia Beach, Va. | Wisconsin | She/Her | | daniellehart | daniellehart |
| 4 | Ray Santos | S | 5-10 | Ponce, Puerto Rico | Arkansas | She/Her | rye sahn-tos | rsantos33 | rsantos33 |
| 5 | Molly McCage | MB | 6-3 | Spring, Texas | Texas | She/Her | | mollymccage | mollymccage |
| 6 | Alisha Childress | S | 6-0 | Leland, Mich. | Penn State | She/Her | Uh-lee-shuh Chill-driss | aglass1_6 | aglass6 |
| 7 | Erin Fairs | OH | 5-10 | Houston, Texas | Louisville | She/Her | | erinnfairs | erinfairs |
| 8 | Sydney Hilley | S | 6-0 | Brooklyn Park, Minn. | Wisconsin | She/Her | | sydneyhilley | sydneyhilley |
| 9 | Sassa Gonzaga | OH | 5-10 | Barbacena, Brazil | - | She/Her | sah-suh gon-zah-guh | welissa10 | - |
| 10 | Kaz Brown | MB | 6-4 | Waterloo, Iowa | Kentucky | She/Her | | kazbrown | kazbrown11 |
| 11 | Claire Chaussee | OH | 6-0 | Sun Prairie, Wis. | Louisville | She/Her | SHAW-say | clairechaussee | clairechaussee9 |
| 12 | Leah Edmond | OH | 6-2 | Lexington, Ky. | Kentucky | She/Her | | leahedmond13 | leahedmond13 |
| 13 | Nootsara Tomkom | S | 5-7 | Ban Pong, Thailand | Rattana Bundit Univ. | She/Her | noo-SAHR-uh tom-kom | nootsara13 | - |
| 14 | Nicole Edelman-Cagliari | S | 6-0 | Boulder, Colo. | Colorado | She/Her | cag-lee-ARE-ee | nicoleedelman | nicoleedelman |
| 15 | Katie Lukes | OH | 6-2 | San Clemente, Calif. | San Diego | She/Her | | katie_lukes | - |
| 16 | Jenna Rosenthal | MB | 6-5 | Fond du Lac, Wis. | Marquette | She/Her | | jenna.rosenthal | - |
| 17 | Taylor Bruns Tegenrot | S | 5-11 | Normal, Ill. | South Carolina | She/Her | Taylor Bruns Tay-gen-root | tbruns27 | - |
| 18 | Deja McClendon | OH | 6-1 | Louisville, Ky. | Penn State | She/Her | day-zhuh | dejabeja | deja_beja |
| 20 | Blake Mohler | MB | 6-2 | Ocean Springs, Miss. | Purdue | She/Her | moe-ler | blakemohler | blakeelizabeth1 |
| 21 | Lindsey Vander Weide | OH | 6-3 | Turlock, Calif. | Oregon | She/Her | van-der-wide-uh | lindseyvdb | lindseyvdb |
| 22 | Yossiana Pressley | OH | 6-0 | Cypress, Texas | Baylor | She/Her | YAW-see-AW-nuh | yossiana22_ | yossiana22 |
| 23 | Tori Dixon | MB | 6-3 | Burnsville, Minn. | Minnesota | She/Her | | toridixon06 | toridixon06 |
| 24 | Aury Cruz | OH | 5-10 | Levittown, Puerto Rico | Florida | She/Her | R-EE Crews | azcruz | azcruz |
| 26 | Maria Schlegel | OH | 6-0 | Asturias, Spain | Polytechnic Madrid's University | She/Her | schlay-gull | mschlegel16 | - |
| 27 | Natalia Valentin-Anderson | S | 5-6 | Caguas, Puerto Rico | Florida International | She/Her | nuh-TAHL-ee-uh val-in-teen anderson | nvale09 | - |
| 28 | Kayla Caffey | MB | 6-0 | Chicago, Ill. | Texas | She/Her | | itskayalexis | - |
| 29 | Lindsay Stalzer | OH | 6-1 | Kewanee, Ill. | Bradley | She/Her | | lindsaystalzer | linzeemarie |
| 31 | Gabby Blossom | S | 5-9 | St. Louis, Mo. | San Diego | She/Her | | gblossom13 | - |
| 32 | Nia Parker-Robinson | OH | 6-2 | Indianapolis, Ind. | North Carolina | She/Her | knee-uh | niarobinson_ | - |
| 33 | Nia Reed | OPP | 6-1 | Fort Lee, N.J. | Penn State | She/Her | knee-uh | niabia7 | niakareed |
| 37 | Alli Linnehan | OH | 6-1 | Floyds Knobs, Ind. | Kentucky | She/Her | alley lynn-uh-han | allistumler | astumler |
| 40 | Nomaris Vélez Agosto | L | 5-4 | Corozal, Puerto Rico | Inter American Univ. | She/Her | no-mahr-is vuh-lez ah-go-sto | nomarivelez23 | - |
| 42 | Symone Abbott | OPP | 6-1 | Detroit, Mich. | Northwestern | She/Her | | symoneabbs | symoney10 |
| 44 | Willow Johnson | OPP | 6-3 | Paradise Valley, Ariz. | Oregon | She/Her | | willowj4 | johnson4willow |
| 46 | Morgan Hentz | L | 5-9 | Lakeside Park, Ky. | Stanford | She/Her | | morganhentz | - |
| 48 | Karis Watson | MB | 6-2 | Rock Hill, S.C. | Clemson | She/Her | care-iss | karisw8 | - |
| 54 | Emma Willis | MB | 6-3 | La Jolla, Calif. | Denver | She/Her | | emmawillis7 | - |
| 55 | Ali Bastianelli | MB | 6-3 | Marysville, Mich. | Illinois | She/Her | Ali Bas-tee-uh-nell-ee | alisonrose5 | alisonrose_5 |
| 77 | Genesis Collazo | OPP | 6-1 | Corozal, Puerto Rico | - | She/Her | hen-uh-sis coy-ah-zo | genesis.collazo7 | - |
| 81 | Bethania De La Cruz | OH | 6-2 | Santo Domingo, Dominican Republic | - | She/Her | Buh-TAN-ya De La Cruz | thebigbeth | - |
| 88 | Marin Grote | MB | 6-4 | Burbank, Calif. | Washington | She/Her | MAIR-in groat | marin_grote | - |
| 91 | Saskia Hippe | OPP | 6-1 | Berlin, Germany | - | She/Her | sahs-kee-uh hip-ah | saskia_hippe | sassi_13 |
| 97 | Shelly Fanning | MB | 6-2 | Cypress, Texas | Baylor | She/Her | | shelleystafford | - |

2023 ATHLETES UNLIMITED VOLLEYBALL INACTIVE ROSTER (NUMERICAL ORDER)

| NO. | NAME | POS. | HT. | HOMETOWN | COLLEGE | PRONOUNS | PRONUNCIATION | INSTAGRAM | TWITTER |
|-----|----------------|------|-----|---------------|---------|----------|---------------|---------------|----------------|
| 19 | Anota Adekunle | MB | 6-1 | Humble, Texas | Rice | She/Her | | anotaadekunle | anota_michelle |

2023 ATHLETES UNLIMITED VOLLEYBALL ALPHABETICAL ROSTER

| NO. | NAME | NO. | NAME | NO. | NAME | NO. | NAME |
|-----|-----------------------|-----|-------------------------|-----|---------------------|-----|---------------------------|
| 42 | Symone Abbott | 81 | Bethania De La Cruz | 44 | Willow Johnson | 26 | Maria Schlegel |
| 19 | Anota Adekunle | 23 | Tori Dixon | 37 | Alli Linnehan | 29 | Lindsay Stalzer |
| 55 | Ali Bastianelli | 14 | Nicole Edelman Cagliari | 15 | Katie Lukes | 13 | Nootsara Tomkom |
| 00 | Amanda Benson | 12 | Leah Edmond | 5 | Molly McCage | 27 | Natalia Valentin-Anderson |
| 31 | Gabby Blossom | 7 | Erin Fairs | 18 | Deja McClendon | 21 | Lindsey Vander Weide |
| 10 | Kaz Brown | 97 | Shelly Fanning | 20 | Blake Mohler | 40 | Nomaris Vélez Agosto |
| 17 | Taylor Bruns Tegenrot | 9 | Sassa Gonzaga | 2 | Brooke Nuneviller | 48 | Karis Watson |
| 28 | Kayla Caffey | 88 | Marin Grote | 32 | Nia Parker-Robinson | 1 | Kendall White |
| 11 | Claire Chaussee | 3 | Danielle Hart | 22 | Yossiana Pressley | 54 | Emma Willis |
| 6 | Alisha Childress | 46 | Morgan Hentz | 33 | Nia Reed | | |
| 77 | Genesis Collazo | 8 | Sydney Hilley | 16 | Jenna Rosenthal | | |
| 24 | Aury Cruz | 91 | Saskia Hippe | 4 | Ray Santos | | |

ATHLETE CAUSES

The Athlete Causes program, powered by Give Lively, will provide funding to charities of the players' choosing equal to 100 percent of their season win bonus and players will have the opportunity to create their own fundraising pages to support the organizations of their choice.

| NO. | ATHLETE | CAUSE |
|-----|---------------------------|--|
| 00 | Amanda Benson | One Love Foundation |
| 1 | Kendall White | Operation Underground Railroad |
| 2 | Brooke Nuneviller | Pink Fund |
| 3 | Danielle Hart | Alzheimer's Association |
| 4 | Ray Santos | Global Village Project |
| 5 | Molly McCage | 1% For The Planet |
| 6 | Alisha Childress | Childress Family Foundation |
| 7 | Erin Fairs | We Serve First |
| 8 | Sydney Hilley | Side Out Foundation |
| 9 | Welissa Gonzaga | National Domestic Violence Hotline |
| 10 | Kaz Brown | Lupus Foundation of America |
| 11 | Claire Chaussee | Lasley and Rhyan Prather Foundation |
| 12 | Leah Edmond | American Cancer Society |
| 13 | Nootsara Tomkom | The Virago Project |
| 14 | Nicole Edelman-Cagliari | Women's Sports Foundation |
| 15 | Katie Lukes | Morgan's Message |
| 16 | Jenna Rosenthal | Operation Underground Railroad |
| 17 | Taylor Bruns Tegenrot | American Foundation for Suicide Prevention |
| 18 | Deja McClendon | JOYcademy |
| 19 | Anota Adekunle | Ella Baker Center for Human Rights |
| 20 | Blake Mohler | Friends of Jaclyn |
| 21 | Lindsey Vander Weide | The Humane Society |
| 22 | Yossiana Pressley | CURE Childhood Cancer |
| 23 | Tori Dixon | OC Pom Rescue |
| 24 | Aury Cruz | Susan G Komen |
| 26 | Maria Schlegel | American Foundation for Suicide Prevention |
| 27 | Natalia Valentin-Anderson | Baby2Baby |
| 28 | Kayla Caffey | BUILD (Broader Urban Involvement & Leadership Development) |
| 29 | Lindsay Stalzer | 1% For The Planet |
| 31 | Gabby Blossom | Michael J Fox Foundation |
| 32 | Nia Parker-Robinson | Eclectic Soul VOICES Corporation |
| 33 | Nia Reed | New Heights Youth Foundation |
| 37 | Alli Linnehan | Go Ministries |
| 40 | Nomaris Vélez Agosto | Morgan's Message |
| 42 | Symone Abbott | Morgan's Message |
| 44 | Willow Johnson | Phoenix Police Foundation |
| 46 | Morgan Hentz | New Perceptions |
| 48 | Karis Watson | Operation Underground Railroad |
| 54 | Emma Willis | The Citizens Foundation |
| 55 | Ali Bastianelli | The Rainbow Connection |
| 77 | Genesis Collazo | Players for Pits |
| 81 | Bethania De La Cruz | Starlings USA |
| 88 | Marin Grote | 1% For The Planet |
| 91 | Saskia Hippe | The Virago Project |
| 97 | Shelly Fanning | Uplifting Athletes |

2023 ATHLETES UNLIMITED VOLLEYBALL SCHEDULE AND RESULTS

| Date | Match # | Match | Broadcast | Time/Score | MVP 1 | MVP 2 | MVP 3 |
|------------|---------|--|-----------|-----------------------------|---------------------|---------------------|-----------------------|
| October 6 | 1 | Team Nootsara vs. Team Valentin-Anderson | ESPN+ | Team Nootsara, 75-63 | Claire Chaussee | Nootsara Tomkom | Nia Reed |
| October 6 | 2 | Team De La Cruz vs. Team Edmond | ESPN+ | Team Edmond, 77-73 | Alli Linnehan | Bethania De La Cruz | Leah Edmond |
| October 8 | 3 | Team Edmond vs. Team Valentin-Anderson | ESPN+ | Team Edmond, 75-58 | Leah Edmond | Sydney Hilley | Danielle Hart |
| October 8 | 4 | Team Nootsara vs. Team De La Cruz | ESPNU | Team Nootsara, 70-69 | Willow Johnson | Ali Bastianelli | Nootsara Tomkom |
| October 9 | 5 | Team Edmond vs. Team Nootsara | ESPNU | Team Edmond, 75-44 | Morgan Hentz | Leah Edmond | Sydney Hilley |
| October 9 | 6 | Team Valentin-Anderson vs. Team De La Cruz | ESPNU | Team De La Cruz, 74-72 (GS) | Bethania De La Cruz | Kaz Brown | Kayla Caffey |
| October 13 | 7 | Team Hentz vs. Team Linnehan | ESPN+ | Team Hentz, 76-51 | Bethania De La Cruz | Morgan Hentz | Taylor Bruns Tegenrot |
| October 13 | 8 | Team Edmond vs. Team Hilley | ESPN+ | Team Hilley, 74-62 | Claire Chaussee | Yossiana Pressley | Sydney Hilley |
| October 15 | 9 | Team Hilley vs. Team Linnehan | ESPN+ | Team Hilley, 75-53 | Claire Chaussee | Sydney Hilley | Kayla Caffey |
| October 15 | 10 | Team Hentz vs. Team Edmond | ESPN+ | Team Hentz, 73-64 | Brooke Nuneviller | Morgan Hentz | Bethania De La Cruz |
| October 16 | 11 | Team Hilley vs. Team Hentz | ESPN+ | Team Hentz, 78-55 | Saskia Hippe | Bethania De La Cruz | Morgan Hentz |
| October 16 | 12 | Team Linnehan vs. Team Edmond | ESPNU | Team Edmond, 69-63 | Molly McCage | Deja McClendon | Leah Edmond |
| October 20 | 13 | Team Hilley vs. Team Hentz | ESPN+ | 7 p.m. ET | | | |
| October 20 | 14 | Team Edmond vs. Team Rosenthal | ESPN+ | 9:30 p.m. ET | | | |
| October 22 | 15 | Team Rosenthal vs. Team Hentz | ESPNU | 7 p.m. ET | | | |
| October 22 | 16 | Team Hilley vs. Team Edmond | ESPNU | 9:30 p.m. ET | | | |
| October 23 | 17 | Team Rosenthal vs. Team Hilley | ESPN+ | 7 p.m. ET | | | |
| October 23 | 18 | Team Hentz vs. Team Edmond | ESPNU | 9:30 p.m. ET | | | |
| October 27 | 19 | Team Blue vs. Team Orange | ESPN+ | 7 p.m. ET | | | |
| October 27 | 20 | Team Gold vs. Team Purple | ESPN+ | 9:30 p.m. ET | | | |
| October 29 | 21 | Team Purple vs. Team Orange | ESPN+ | 7 p.m. ET | | | |
| October 29 | 22 | Team Blue vs. Team Gold | ESPNU | 9:30 p.m. ET | | | |
| October 30 | 23 | Team Purple vs. Team Blue | ESPN+ | 7 p.m. ET | | | |
| October 30 | 24 | Team Orange vs. Team Gold | ESPNU | 9:30 p.m. ET | | | |
| November 3 | 25 | Team Blue vs. Team Orange | ESPN+ | 7 p.m. ET | | | |
| November 3 | 26 | Team Gold vs. Team Purple | ESPN+ | 9:30 p.m. ET | | | |
| November 5 | 27 | Team Purple vs. Team Orange | ESPN+ | 7 p.m. ET | | | |
| November 5 | 28 | Team Blue vs. Team Gold | ESPNU | 9:30 p.m. ET | | | |
| November 6 | 29 | Team Purple vs. Team Blue | ESPN+ | 7 p.m. ET | | | |
| November 6 | 30 | Team Orange vs. Team Gold | ESPNU | 9:30 p.m. ET | | | |

2023 ATHLETES UNLIMITED VOLLEYBALL LEADERBOARD

| RANK | CHANGE | NAME | TOTAL POINTS | WIN POINTS | STAT POINTS | MVP POINTS |
|------|--------|---------------------------|--------------|------------|-------------|------------|
| 1 | 6 | Bethania De La Cruz | 1,874 | 720 | 934 | 220 |
| 2 | -1 | Leah Edmond | 1,737 | 720 | 877 | 140 |
| 3 | 0 | Morgan Hentz | 1,716 | 1,000 | 556 | 160 |
| 4 | 0 | Sydney Hilley | 1,466 | 820 | 526 | 120 |
| 5 | 3 | Jenna Rosenthal | 1,423 | 1,000 | 423 | 0 |
| 6 | 5 | Claire Chaussee | 1,397 | 600 | 617 | 180 |
| 7 | 18 | Brooke Nuneviller | 1,305 | 580 | 665 | 60 |
| 8 | 14 | Natalia Valentin-Anderson | 1,260 | 580 | 680 | 0 |
| 9 | -4 | Danielle Hart | 1,199 | 820 | 359 | 20 |
| 10 | 18 | Saskia Hippe | 1,124 | 580 | 484 | 60 |
| 11 | -9 | Alli Linnehan | 1,090 | 540 | 490 | 60 |
| 12 | 0 | Emma Willis | 1,080 | 1,000 | 80 | 0 |
| 13 | 6 | Aury Cruz | 1,073 | 600 | 473 | 0 |
| 14 | -8 | Génesis Collazo | 1,061 | 720 | 341 | 0 |
| 15 | 3 | Lindsey Vander Weide | 981 | 720 | 261 | 0 |
| 16 | 10 | Yossiana Pressley | 970 | 600 | 330 | 40 |
| 17 | 7 | Molly McCage | 948 | 500 | 388 | 60 |
| 18 | -2 | Alisha Childress | 937 | 440 | 497 | 0 |
| 19 | 8 | Lindsay Stalzer | 860 | 860 | 0 | 0 |
| 20 | 3 | Kayla Caffey | 856 | 540 | 276 | 40 |
| 21 | 0 | Nomaris Vélez Agosto | 839 | 440 | 399 | 0 |
| 22 | -10 | Deja McClendon | 829 | 720 | 69 | 40 |
| 23 | -14 | Willow Johnson | 811 | 260 | 491 | 60 |
| 24 | 10 | Tori Dixon | 781 | 400 | 381 | 0 |
| 25 | 6 | Karis Watson | 774 | 720 | 54 | 0 |
| 26 | -14 | Kendall White | 758 | 320 | 438 | 0 |
| 27 | -12 | Taylor Bruns Tegenrot | 752 | 540 | 192 | 20 |
| 28 | 5 | Amanda Benson | 743 | 400 | 343 | 0 |
| 29 | -9 | Nia Reed | 741 | 600 | 121 | 20 |
| 30 | -20 | Nootsara Tomkom | 724 | 320 | 344 | 60 |
| 31 | -1 | Sassá Gonzaga | 643 | 600 | 43 | 0 |
| 32 | -4 | Nicole Edelman-Cagliari | 637 | 600 | 37 | 0 |
| 33 | 8 | Ray Santos | 597 | 580 | 17 | 0 |
| 34 | 9 | Katie Lukes | 580 | 300 | 280 | 0 |
| 35 | -18 | Ali Bastianelli | 555 | 320 | 195 | 40 |
| 36 | -5 | Marin Grote | 506 | 500 | 6 | 0 |
| 37 | 5 | Shelly Fanning | 502 | 300 | 202 | 0 |
| 38 | -3 | Kaz Brown | 494 | 120 | 334 | 40 |
| 39 | -2 | Gabby Blossom | 437 | 440 | -3 | 0 |
| 40 | -2 | Erin Fairs | 426 | 260 | 166 | 0 |
| 41 | 3 | Nia Parker-Robinson | 309 | 300 | 9 | 0 |
| 42 | -3 | Symone Abbott | 256 | 260 | -4 | 0 |
| 43 | -7 | Anota Adekunle | 236 | 220 | 16 | 0 |
| 44 | -4 | Maria Schlegel | 222 | 120 | 102 | 0 |
| 45 | 0 | Blake Mohler | 108 | 120 | -12 | 0 |

2023 ATHLETES UNLIMITED VOLLEYBALL LEADERBOARD POINTS BY WEEK

| NAME | WEEK ONE | WEEK TWO | WEEK THREE | WEEK FOUR | WEEK FIVE | TOTAL POINTS |
|----------------------------|----------|----------|------------|-----------|-----------|--------------|
| Abbott, Symone | 220 | 36 | | | | 256 |
| Adekunle, Anota | 236 | 0 | | | | 236 |
| Bastianelli, Ali | 475 | 80 | | | | 555 |
| Benson, Amanda | 248 | 495 | | | | 743 |
| Blossom, Gabby | 225 | 212 | | | | 437 |
| Brown, Kaz | 279 | 215 | | | | 494 |
| Bruns Tegenrot, Taylor | 492 | 260 | | | | 752 |
| Caffey, Kayla | 407 | 449 | | | | 856 |
| Chaussee, Claire | 578 | 819 | | | | 1,397 |
| Childress, Alisha | 485 | 452 | | | | 937 |
| Collazo, Génesis | 745 | 316 | | | | 1,061 |
| Cruz, Aury | 439 | 634 | | | | 1,073 |
| De La Cruz, Bethania | 729 | 1,145 | | | | 1,874 |
| Dixon, Tori | 242 | 539 | | | | 781 |
| Edelman-Cagliari, Nicole | 317 | 320 | | | | 637 |
| Edmond, Leah | 1,028 | 709 | | | | 1,737 |
| Fairs, Erin | 223 | 203 | | | | 426 |
| Fanning, Shelly | 90 | 412 | | | | 502 |
| Gonzaga, Sassá | 309 | 334 | | | | 643 |
| Grote, Marin | 286 | 220 | | | | 506 |
| Hart, Danielle | 817 | 382 | | | | 1,199 |
| Hentz, Morgan | 881 | 835 | | | | 1,716 |
| Hilley, Sydney | 880 | 586 | | | | 1,466 |
| Hippe, Saskia | 321 | 803 | | | | 1,124 |
| Johnson, Willow | 590 | 221 | | | | 811 |
| Linnehan, Alli | 923 | 167 | | | | 1,090 |
| Lukes, Katie | 86 | 494 | | | | 580 |
| McCage, Molly | 374 | 574 | | | | 948 |
| McClendon, Deja | 500 | 329 | | | | 829 |
| Mohler, Blake | 80 | 28 | | | | 108 |
| Nuneviller, Brooke | 364 | 941 | | | | 1,305 |
| Parker-Robinson, Nia | 83 | 226 | | | | 309 |
| Pressley, Yossiana | 359 | 611 | | | | 970 |
| Reed, Nia | 433 | 308 | | | | 741 |
| Rosenthal, Jenna | 675 | 748 | | | | 1,423 |
| Santos, Ray | 92 | 505 | | | | 597 |
| Schlegel, Maria | 98 | 124 | | | | 222 |
| Stalzer, Lindsay | 360 | 500 | | | | 860 |
| Tomkom, Nootsara | 579 | 145 | | | | 724 |
| Valentin-Anderson, Natalia | 400 | 860 | | | | 1,260 |
| Vander Weide, Lindsey | 481 | 500 | | | | 981 |
| Vélez Agosto, Nomaris | 414 | 425 | | | | 839 |
| Watson, Karis | 274 | 500 | | | | 774 |
| White, Kendall | 500 | 258 | | | | 758 |
| Willis, Emma | 500 | 580 | | | | 1,080 |

2023 ATHLETES UNLIMITED VOLLEYBALL SEASON STATISTICS

| RANK | PLAYER | SP | K | K/S | E | ATT. | PCT. | A | A/S | SET E | SA | SA/S | SE | TRA | RE | PCT. | D | D/S | BS | BS/S | BA | BA/S | LPTS |
|------|----------------------------|----|-----|------|----|------|--------|-----|-------|-------|----|------|----|-----|----|-------|-----|------|----|------|----|------|-------|
| 1 | De La Cruz, Bethania | 19 | 100 | 5.26 | 17 | 218 | .381 | 3 | 0.16 | 2 | 10 | 0.53 | 6 | 134 | 4 | .530 | 46 | 2.42 | 3 | 0.16 | 0 | 0.00 | 1,874 |
| 2 | Edmond, Leah | 18 | 90 | 5.00 | 25 | 202 | .322 | 6 | 0.33 | 0 | 3 | 0.17 | 5 | 166 | 11 | .480 | 57 | 3.17 | 13 | 0.72 | 0 | 0.00 | 1,737 |
| 3 | Hentz, Morgan | 18 | 0 | 0.00 | 0 | 0 | .000 | 19 | 1.06 | 0 | 0 | 0.00 | 0 | 64 | 2 | .630 | 100 | 5.56 | 0 | 0.00 | 0 | 0.00 | 1,716 |
| 4 | Hilley, Sydney | 18 | 11 | 0.61 | 3 | 28 | .286 | 221 | 12.28 | 4 | 5 | 0.28 | 1 | 3 | 0 | .000 | 33 | 1.83 | 8 | 0.44 | 0 | 0.00 | 1,466 |
| 5 | Rosenthal, Jenna | 18 | 41 | 2.28 | 5 | 92 | .391 | 1 | 0.06 | 0 | 1 | 0.06 | 2 | 5 | 0 | .200 | 16 | 0.89 | 5 | 0.28 | 12 | 0.67 | 1,423 |
| 6 | Chaussee, Claire | 17 | 80 | 4.71 | 25 | 215 | .256 | 0 | 0.00 | 0 | 2 | 0.12 | 13 | 134 | 7 | .510 | 41 | 2.41 | 8 | 0.47 | 0 | 0.00 | 1,397 |
| 7 | Nuneviller, Brooke | 19 | 60 | 3.16 | 11 | 163 | .301 | 2 | 0.11 | 0 | 2 | 0.11 | 5 | 115 | 5 | .530 | 56 | 2.95 | 1 | 0.05 | 0 | 0.00 | 1,305 |
| 8 | Valentin-Anderson, Natalia | 19 | 6 | 0.32 | 1 | 16 | .313 | 217 | 11.42 | 3 | 9 | 0.47 | 5 | 0 | 0 | .000 | 68 | 3.58 | 7 | 0.37 | 0 | 0.00 | 1,260 |
| 9 | Hart, Danielle | 12 | 23 | 1.92 | 5 | 64 | .281 | 0 | 0.00 | 0 | 2 | 0.17 | 4 | 3 | 0 | 1.000 | 13 | 1.08 | 14 | 1.17 | 12 | 1.00 | 1,199 |
| 10 | Hippe, Saskia | 19 | 66 | 3.47 | 28 | 188 | .202 | 3 | 0.16 | 0 | 4 | 0.21 | 6 | 0 | 0 | .000 | 49 | 2.58 | 5 | 0.26 | 0 | 0.00 | 1,124 |
| 11 | Linnehan, Alli | 18 | 51 | 2.83 | 21 | 194 | .155 | 5 | 0.28 | 0 | 2 | 0.11 | 2 | 103 | 5 | .480 | 36 | 2.00 | 10 | 0.56 | 0 | 0.00 | 1,090 |
| 12 | Willis, Emma | 9 | 11 | 1.22 | 3 | 23 | .348 | 2 | 0.22 | 0 | 1 | 0.11 | 4 | 0 | 0 | .000 | 2 | 0.22 | 2 | 0.22 | 6 | 0.67 | 1,080 |
| 13 | Cruz, Aury | 16 | 33 | 2.06 | 11 | 96 | .229 | 3 | 0.19 | 0 | 3 | 0.19 | 2 | 83 | 1 | .550 | 40 | 2.50 | 3 | 0.19 | 0 | 0.00 | 1,073 |
| 14 | Collazo, Génesis | 17 | 26 | 1.53 | 15 | 91 | .121 | 2 | 0.12 | 0 | 1 | 0.06 | 0 | 0 | 0 | .000 | 35 | 2.06 | 10 | 0.59 | 0 | 0.00 | 1,061 |
| 15 | Vander Weide, Lindsey | 11 | 22 | 2.00 | 8 | 76 | .184 | 1 | 0.09 | 0 | 1 | 0.09 | 2 | 79 | 4 | .520 | 24 | 2.18 | 1 | 0.09 | 0 | 0.00 | 981 |
| 16 | Pressley, Yossiana | 17 | 39 | 2.29 | 17 | 115 | .191 | 0 | 0.00 | 1 | 3 | 0.18 | 3 | 41 | 2 | .370 | 37 | 2.18 | 3 | 0.18 | 0 | 0.00 | 970 |
| 17 | McCage, Molly | 17 | 43 | 2.53 | 7 | 87 | .414 | 3 | 0.18 | 0 | 1 | 0.06 | 8 | 0 | 0 | .000 | 13 | 0.76 | 8 | 0.47 | 8 | 0.47 | 948 |
| 18 | Childress, Alisha | 19 | 9 | 0.47 | 2 | 26 | .269 | 241 | 12.68 | 7 | 1 | 0.05 | 5 | 0 | 0 | .000 | 57 | 3.00 | 3 | 0.16 | 0 | 0.00 | 937 |
| 19 | Stalzer, Lindsay | 1 | 0 | 0.00 | 0 | 0 | .000 | 0 | 0.00 | 0 | 0 | 0.00 | 0 | 0 | 0 | .000 | 0 | 0.00 | 0 | 0.00 | 0 | 0.00 | 860 |
| 20 | Caffey, Kayla | 15 | 25 | 1.67 | 9 | 47 | .340 | 1 | 0.07 | 0 | 0 | 0.00 | 5 | 3 | 1 | .000 | 7 | 0.47 | 16 | 1.07 | 4 | 0.27 | 856 |
| 21 | Vélez Agosto, Nomaris | 19 | 0 | 0.00 | 0 | 0 | .000 | 14 | 0.74 | 0 | 0 | 0.00 | 0 | 79 | 5 | .580 | 73 | 3.84 | 0 | 0.00 | 0 | 0.00 | 839 |
| 22 | McClendon, Deja | 3 | 5 | 1.67 | 3 | 20 | .100 | 0 | 0.00 | 0 | 0 | 0.00 | 0 | 9 | 0 | .560 | 11 | 3.67 | 0 | 0.00 | 0 | 0.00 | 829 |
| 23 | Johnson, Willow | 19 | 79 | 4.16 | 31 | 204 | .235 | 0 | 0.00 | 1 | 2 | 0.11 | 7 | 1 | 0 | 1.000 | 39 | 2.05 | 9 | 0.47 | 0 | 0.00 | 811 |
| 24 | Dixon, Tori | 19 | 30 | 1.58 | 6 | 70 | .343 | 3 | 0.16 | 0 | 2 | 0.11 | 2 | 6 | 0 | .500 | 18 | 0.95 | 8 | 0.42 | 5 | 0.26 | 781 |
| 25 | Watson, Karis | 10 | 11 | 1.10 | 3 | 26 | .308 | 1 | 0.10 | 0 | 1 | 0.10 | 5 | 2 | 1 | .500 | 6 | 0.60 | 1 | 0.10 | 3 | 0.30 | 774 |
| 26 | White, Kendall | 18 | 0 | 0.00 | 0 | 0 | .000 | 15 | 0.83 | 0 | 0 | 0.00 | 0 | 96 | 5 | .610 | 73 | 4.06 | 0 | 0.00 | 0 | 0.00 | 758 |
| 27 | Bruns Tegenrot, Taylor | 16 | 6 | 0.38 | 0 | 17 | .353 | 49 | 3.06 | 1 | 1 | 0.06 | 2 | 0 | 0 | .000 | 16 | 1.00 | 3 | 0.19 | 0 | 0.00 | 752 |
| 28 | Benson, Amanda | 19 | 0 | 0.00 | 0 | 0 | .000 | 15 | 0.79 | 0 | 0 | 0.00 | 0 | 108 | 6 | .610 | 54 | 2.84 | 0 | 0.00 | 0 | 0.00 | 743 |
| 29 | Reed, Nia | 8 | 18 | 2.25 | 11 | 73 | .096 | 1 | 0.13 | 0 | 1 | 0.13 | 0 | 0 | 0 | .000 | 12 | 1.50 | 3 | 0.38 | 0 | 0.00 | 741 |
| 30 | Tomkom, Nootsara | 16 | 0 | 0.00 | 0 | 6 | .000 | 121 | 7.56 | 2 | 3 | 0.19 | 1 | 0 | 0 | .000 | 39 | 2.44 | 2 | 0.13 | 0 | 0.00 | 724 |
| 31 | Gonzaga, Sassá | 5 | 1 | 0.20 | 2 | 8 | -.125 | 0 | 0.00 | 0 | 0 | 0.00 | 0 | 11 | 0 | .640 | 9 | 1.80 | 0 | 0.00 | 0 | 0.00 | 643 |
| 32 | Edelman-Cagliari, Nicole | 4 | 1 | 0.25 | 0 | 4 | .250 | 12 | 3.00 | 1 | 0 | 0.00 | 1 | 0 | 0 | .000 | 5 | 1.25 | 1 | 0.25 | 0 | 0.00 | 637 |
| 33 | Santos, Ray | 6 | 0 | 0.00 | 0 | 0 | .000 | 0 | 0.00 | 0 | 1 | 0.17 | 0 | 0 | 0 | .000 | 1 | 0.17 | 0 | 0.00 | 0 | 0.00 | 597 |
| 34 | Lukes, Katie | 16 | 45 | 2.81 | 24 | 146 | .144 | 4 | 0.25 | 0 | 0 | 0.00 | 7 | 124 | 2 | .480 | 26 | 1.63 | 3 | 0.19 | 0 | 0.00 | 580 |
| 35 | Bastianelli, Ali | 18 | 27 | 1.50 | 11 | 74 | .216 | 2 | 0.11 | 0 | 3 | 0.17 | 8 | 3 | 0 | .670 | 5 | 0.28 | 7 | 0.39 | 12 | 0.67 | 555 |
| 36 | Grote, Marin | 1 | 0 | 0.00 | 0 | 2 | .000 | 0 | 0.00 | 0 | 0 | 0.00 | 1 | 0 | 0 | .000 | 0 | 0.00 | 1 | 1.00 | 1 | 1.00 | 506 |
| 37 | Fanning, Shelly | 12 | 16 | 1.33 | 6 | 44 | .227 | 2 | 0.17 | 0 | 4 | 0.33 | 3 | 0 | 0 | .000 | 12 | 1.00 | 4 | 0.33 | 6 | 0.50 | 502 |
| 38 | Brown, Kaz | 16 | 34 | 2.13 | 11 | 76 | .303 | 0 | 0.00 | 0 | 0 | 0.00 | 2 | 1 | 0 | .000 | 4 | 0.25 | 15 | 0.94 | 6 | 0.38 | 494 |
| 39 | Blossom, Gabby | 10 | 0 | 0.00 | 0 | 0 | .000 | 0 | 0.00 | 0 | 0 | 0.00 | 1 | 0 | 0 | .000 | 1 | 0.10 | 0 | 0.00 | 0 | 0.00 | 437 |
| 40 | Fairs, Erin | 13 | 21 | 1.62 | 6 | 55 | .273 | 2 | 0.15 | 0 | 0 | 0.00 | 2 | 74 | 8 | .420 | 20 | 1.54 | 2 | 0.15 | 0 | 0.00 | 426 |
| 41 | Parker-Robinson, Nia | 4 | 7 | 1.75 | 6 | 23 | .043 | 0 | 0.00 | 0 | 1 | 0.25 | 1 | 10 | 0 | .300 | 3 | 0.75 | 0 | 0.00 | 0 | 0.00 | 309 |
| 42 | Abbott, Symone | 1 | 1 | 1.00 | 1 | 5 | .000 | 0 | 0.00 | 0 | 0 | 0.00 | 0 | 0 | 0 | .000 | 0 | 0.00 | 0 | 0.00 | 0 | 0.00 | 256 |
| 43 | Adekunle, Anota | 1 | 2 | 2.00 | 0 | 3 | .667 | 0 | 0.00 | 0 | 0 | 0.00 | 0 | 0 | 0 | .000 | 0 | 0.00 | 0 | 0.00 | 0 | 0.00 | 236 |
| 44 | Schlegel, Maria | 8 | 7 | 0.88 | 4 | 34 | .088 | 1 | 0.13 | 1 | 0 | 0.00 | 3 | 36 | 1 | .640 | 19 | 2.38 | 0 | 0.00 | 0 | 0.00 | 222 |
| 45 | Mohler, Blake | 1 | 0 | 0.00 | 1 | 1 | -1.000 | 0 | 0.00 | 0 | 0 | 0.00 | 0 | 0 | 0 | .000 | 0 | 0.00 | 0 | 0.00 | 0 | 0.00 | 28 |

2023 ATHLETES UNLIMITED VOLLEYBALL STATISTICS | WEEK ONE

| RANK | PLAYER | SP | K | K/S | E | ATT. | PCT. | A | A/S | SET E | SA | SA/S | SE | TRA | RE | PCT. | D | D/S | BS | BS/S | BA | BA/S | LPTS |
|------|----------------------------|----|----|------|----|------|-------|-----|-------|-------|----|------|----|-----|----|-------|----|------|----|------|----|------|-------|
| 1 | Edmond, Leah | 9 | 46 | 5.11 | 15 | 97 | .320 | 1 | 0.11 | 0 | 1 | 0.11 | 4 | 84 | 4 | .510 | 21 | 2.33 | 9 | 1.00 | 0 | 0.00 | 1,028 |
| 2 | Linnehan, Alli | 9 | 32 | 3.56 | 7 | 99 | .253 | 2 | 0.22 | 0 | 1 | 0.11 | 2 | 44 | 1 | .480 | 24 | 2.67 | 5 | 0.56 | 0 | 0.00 | 923 |
| 3 | Hentz, Morgan | 9 | 0 | 0.00 | 0 | 0 | .000 | 8 | 0.89 | 0 | 0 | 0.00 | 0 | 31 | 0 | .680 | 57 | 6.33 | 0 | 0.00 | 0 | 0.00 | 881 |
| 4 | Hilley, Sydney | 9 | 6 | 0.67 | 1 | 13 | .385 | 111 | 12.33 | 2 | 2 | 0.22 | 0 | 2 | 0 | .000 | 20 | 2.22 | 7 | 0.78 | 0 | 0.00 | 880 |
| 5 | Hart, Danielle | 9 | 17 | 1.89 | 4 | 45 | .000 | 0 | 0.00 | 0 | 2 | 0.22 | 3 | 3 | 0 | 1.000 | 11 | 1.22 | 12 | 1.33 | 12 | 1.33 | 817 |
| 6 | Collazo, Génesis | 9 | 14 | 1.56 | 7 | 42 | .000 | 2 | 0.22 | 0 | 1 | 0.11 | 0 | 0 | 0 | .000 | 23 | 2.56 | 7 | 0.78 | 0 | 0.00 | 745 |
| 7 | De La Cruz, Bethania | 10 | 47 | 4.70 | 9 | 107 | .355 | 2 | 0.20 | 1 | 6 | 0.60 | 4 | 74 | 2 | .550 | 22 | 2.20 | 1 | 0.10 | 0 | 0.00 | 729 |
| 8 | Rosenthal, Jenna | 9 | 20 | 2.22 | 3 | 48 | .354 | 1 | 0.11 | 0 | 0 | 0.00 | 1 | 1 | 0 | .000 | 6 | 0.67 | 1 | 0.11 | 12 | 1.33 | 675 |
| 9 | Johnson, Willow | 10 | 50 | 5.00 | 15 | 117 | .299 | 0 | 0.00 | 0 | 0 | 0.00 | 4 | 1 | 0 | 1.000 | 18 | 1.80 | 5 | 0.50 | 0 | 0.00 | 590 |
| 10 | Tomkom, Nootsara | 8 | 0 | 0.00 | 0 | 4 | .000 | 88 | 11.00 | 1 | 2 | 0.25 | 0 | 0 | 0 | .000 | 23 | 2.88 | 2 | 0.25 | 0 | 0.00 | 579 |
| 11 | Chaussee, Claire | 8 | 31 | 3.88 | 12 | 89 | .213 | 0 | 0.00 | 0 | 1 | 0.13 | 5 | 63 | 3 | .480 | 18 | 2.25 | 4 | 0.50 | 0 | 0.00 | 578 |
| 12 | McClendon, Deja | 0 | 0 | 0.00 | 0 | 0 | .000 | 0 | 0.00 | 0 | 0 | 0.00 | 0 | 0 | 0 | .000 | 0 | 0.00 | 0 | 0.00 | 0 | 0.00 | 500 |
| 12 | White, Kendall | 9 | 0 | 0.00 | 0 | 0 | .000 | 10 | 1.11 | 0 | 0 | 0.00 | 0 | 41 | 1 | .630 | 34 | 3.78 | 0 | 0.00 | 0 | 0.00 | 500 |
| 12 | Willis, Emma | 0 | 0 | 0.00 | 0 | 0 | .000 | 0 | 0.00 | 0 | 0 | 0.00 | 0 | 0 | 0 | .000 | 0 | 0.00 | 0 | 0.00 | 0 | 0.00 | 500 |
| 15 | Bruns Tegenrot, Taylor | 9 | 0 | 0.00 | 0 | 1 | .000 | 0 | 0.00 | 0 | 0 | 0.00 | 1 | 0 | 0 | .000 | 1 | 0.11 | 0 | 0.00 | 0 | 0.00 | 492 |
| 16 | Childress, Alisha | 10 | 4 | 0.40 | 2 | 15 | .133 | 127 | 12.70 | 2 | 0 | 0.00 | 2 | 0 | 0 | .000 | 27 | 2.70 | 3 | 0.30 | 0 | 0.00 | 485 |
| 17 | Vander Weide, Lindsey | 9 | 22 | 0.00 | 8 | 75 | .000 | 1 | 0.00 | 0 | 1 | 0.00 | 2 | 79 | 4 | .520 | 24 | 0.00 | 1 | 0.00 | 0 | 0.00 | 481 |
| 18 | Bastianelli, Ali | 9 | 22 | 0.00 | 5 | 39 | .000 | 1 | 0.00 | 0 | 3 | 0.00 | 4 | 3 | 0 | .670 | 2 | 0.00 | 1 | 0.00 | 4 | 0.00 | 475 |
| 19 | Cruz, Aury | 7 | 17 | 0.00 | 6 | 43 | .000 | 2 | 0.00 | 0 | 0 | 0.00 | 1 | 36 | 1 | .470 | 11 | 0.00 | 2 | 0.00 | 0 | 0.00 | 439 |
| 20 | Reed, Nia | 7 | 18 | 0.00 | 10 | 71 | .000 | 1 | 0.00 | 0 | 1 | 0.00 | 0 | 0 | 0 | .000 | 12 | 0.00 | 3 | 0.00 | 0 | 0.00 | 433 |
| 21 | Vélez Agosto, Nomaris | 10 | 0 | 0.00 | 0 | 0 | .000 | 8 | 0.80 | 0 | 0 | 0.00 | 0 | 37 | 2 | .570 | 36 | 3.60 | 0 | 0.00 | 0 | 0.00 | 414 |
| 22 | Caffey, Kayla | 9 | 13 | 0.00 | 5 | 23 | .000 | 1 | 0.00 | 0 | 0 | 0.00 | 3 | 3 | 1 | .000 | 6 | 0.00 | 10 | 0.00 | 4 | 0.00 | 407 |
| 23 | Valentin-Anderson, Natalia | 10 | 3 | 0.30 | 1 | 10 | .000 | 91 | 9.10 | 2 | 2 | 0.20 | 1 | 0 | 0 | .000 | 40 | 4.00 | 4 | 0.40 | 0 | 0.00 | 400 |
| 24 | McCage, Molly | 8 | 16 | 0.00 | 3 | 35 | .000 | 1 | 0.00 | 0 | 0 | 0.00 | 6 | 0 | 0 | .000 | 3 | 0.00 | 2 | 0.00 | 5 | 0.00 | 374 |
| 25 | Nuneviller, Brooke | 10 | 29 | 0.00 | 8 | 79 | .000 | 1 | 0.00 | 0 | 1 | 0.00 | 2 | 58 | 1 | .550 | 22 | 0.00 | 1 | 0.00 | 0 | 0.00 | 364 |
| 26 | Stalzer, Lindsay | 0 | 0 | 0.00 | 0 | 0 | .000 | 0 | 0.00 | 0 | 0 | 0.00 | 0 | 0 | 0 | .000 | 0 | 0.00 | 0 | 0.00 | 0 | 0.00 | 360 |
| 27 | Pressley, Yossiana | 8 | 17 | 2.13 | 11 | 61 | .098 | 0 | 0.00 | 0 | 0 | 0.00 | 0 | 41 | 2 | .370 | 9 | 1.13 | 2 | 0.25 | 0 | 0.00 | 359 |
| 28 | Hippe, Saskia | 10 | 37 | 3.70 | 16 | 105 | .000 | 2 | 0.20 | 0 | 0 | 0.00 | 2 | 0 | 0 | .000 | 27 | 2.70 | 1 | 0.10 | 0 | 0.00 | 321 |
| 29 | Edelman-Cagliari, Nicole | 4 | 1 | 0.00 | 0 | 4 | .000 | 12 | 0.00 | 1 | 0 | 0.00 | 1 | 0 | 0 | .000 | 5 | 0.00 | 1 | 0.00 | 0 | 0.00 | 317 |
| 30 | Gonzaga, Sassá | 4 | 1 | 0.25 | 2 | 6 | -.167 | 0 | 0.00 | 0 | 0 | 0.00 | 0 | 8 | 0 | .630 | 7 | 1.75 | 0 | 0.00 | 0 | 0.00 | 309 |
| 31 | Grote, Marin | 1 | 0 | 0.00 | 0 | 2 | .000 | 0 | 0.00 | 0 | 0 | 0.00 | 1 | 0 | 0 | .000 | 0 | 0.00 | 1 | 1.00 | 1 | 1.00 | 286 |
| 32 | Brown, Kaz | 7 | 15 | 2.14 | 5 | 38 | .263 | 0 | 0.00 | 0 | 0 | 0.00 | 2 | 0 | 0 | .000 | 1 | 0.14 | 9 | 1.29 | 2 | 0.29 | 279 |
| 33 | Watson, Karis | 10 | 11 | 1.10 | 3 | 26 | .000 | 1 | 0.10 | 0 | 1 | 0.10 | 5 | 2 | 1 | .500 | 6 | 0.60 | 1 | 0.10 | 3 | 0.30 | 274 |
| 34 | Benson, Amanda | 10 | 0 | 0.00 | 0 | 0 | .000 | 12 | 1.20 | 0 | 0 | 0.00 | 0 | 56 | 3 | .550 | 26 | 2.60 | 0 | 0.00 | 0 | 0.00 | 248 |
| 35 | Dixon, Tori | 10 | 15 | 0.00 | 5 | 38 | .000 | 2 | 0.00 | 0 | 2 | 0.00 | 1 | 2 | 0 | .500 | 8 | 0.00 | 3 | 0.00 | 3 | 0.00 | 242 |
| 36 | Adekunle, Anota | 1 | 2 | 0.00 | 0 | 3 | .000 | 0 | 0.00 | 0 | 0 | 0.00 | 0 | 0 | 0 | .000 | 0 | 0.00 | 0 | 0.00 | 0 | 0.00 | 236 |
| 37 | Blossom, Gabby | 6 | 0 | 0.00 | 0 | 0 | .000 | 0 | 0.00 | 0 | 0 | 0.00 | 0 | 0 | 0 | .000 | 1 | 0.17 | 0 | 0.00 | 0 | 0.00 | 225 |
| 38 | Fairs, Erin | 5 | 0 | 0.00 | 0 | 0 | .000 | 1 | 0.20 | 0 | 0 | 0.00 | 0 | 8 | 1 | .000 | 4 | 0.80 | 0 | 0.00 | 0 | 0.00 | 223 |
| 39 | Abbott, Symone | 0 | 0 | 0.00 | 0 | 0 | .000 | 0 | 0.00 | 0 | 0 | 0.00 | 0 | 0 | 0 | .000 | 0 | 0.00 | 0 | 0.00 | 0 | 0.00 | 220 |
| 40 | Schlegel, Maria | 5 | 3 | 0.60 | 3 | 12 | .000 | 0 | 0.00 | 0 | 0 | 0.00 | 1 | 16 | 1 | .630 | 6 | 1.20 | 0 | 0.00 | 0 | 0.00 | 98 |
| 41 | Santos, Ray | 3 | 0 | 0.00 | 0 | 0 | .000 | 0 | 0.00 | 0 | 1 | 0.33 | 0 | 0 | 0 | .000 | 0 | 0.00 | 0 | 0.00 | 0 | 0.00 | 92 |
| 42 | Fanning, Shelly | 3 | 4 | 0.00 | 3 | 12 | .083 | 0 | 0.00 | 0 | 0 | 0.00 | 0 | 0 | 0 | .000 | 0 | 0.00 | 1 | 0.00 | 1 | 0.00 | 90 |
| 43 | Lukes, Katie | 9 | 13 | 1.44 | 16 | 58 | -.052 | 3 | 0.33 | 0 | 0 | 0.00 | 4 | 59 | 0 | .490 | 11 | 1.22 | 1 | 0.11 | 0 | 0.00 | 86 |
| 44 | Parker-Robinson, Nia | 2 | 5 | 2.50 | 4 | 16 | .063 | 0 | 0.00 | 0 | 0 | 0.00 | 0 | 10 | 0 | .300 | 1 | 0.50 | 0 | 0.00 | 0 | 0.00 | 83 |

2023 ATHLETES UNLIMITED VOLLEYBALL STATISTICS | WEEK TWO

| RANK | PLAYER | SP | K | K/S | E | ATT. | PCT. | A | A/S | SET E | SA | SA/S | SE | TRA | RE | PCT. | D | D/S | BS | BS/S | BA | BA/S | LPTS |
|------|----------------------------|----|----|------|----|------|--------|-----|-------|-------|----|------|----|-----|----|------|----|------|----|------|----|------|-------|
| 1 | De La Cruz, Bethania | 9 | 53 | 5.89 | 8 | 111 | .405 | 1 | 0.11 | 1 | 4 | 0.44 | 2 | 60 | 2 | .500 | 24 | 2.67 | 2 | 0.22 | 0 | 0.00 | 1,145 |
| 2 | Nuneviller, Brooke | 9 | 31 | 3.44 | 3 | 84 | .333 | 1 | 0.11 | 0 | 1 | 0.11 | 3 | 57 | 4 | .510 | 34 | 3.78 | 0 | 0.00 | 0 | 0.00 | 941 |
| 3 | Valentin-Anderson, Natalia | 9 | 3 | 0.33 | 0 | 6 | .500 | 126 | 14.00 | 1 | 7 | 0.78 | 4 | 0 | 0 | .000 | 28 | 3.11 | 3 | 0.33 | 0 | 0.00 | 860 |
| 4 | Hentz, Morgan | 9 | 0 | 0.00 | 0 | 0 | .000 | 11 | 1.22 | 0 | 0 | 0.00 | 0 | 33 | 2 | .580 | 43 | 4.78 | 0 | 0.00 | 0 | 0.00 | 835 |
| 5 | Chaussee, Claire | 9 | 49 | 5.44 | 13 | 126 | .286 | 0 | 0.00 | 0 | 1 | 0.11 | 8 | 71 | 4 | .540 | 23 | 2.56 | 4 | 0.44 | 0 | 0.00 | 819 |
| 6 | Hippe, Saskia | 9 | 29 | 3.22 | 12 | 83 | .205 | 1 | 0.11 | 0 | 4 | 0.44 | 4 | 0 | 0 | .000 | 22 | 2.44 | 4 | 0.44 | 0 | 0.00 | 803 |
| 7 | Rosenthal, Jenna | 9 | 21 | 2.33 | 2 | 44 | .432 | 0 | 0.00 | 0 | 1 | 0.11 | 1 | 4 | 0 | .250 | 10 | 1.11 | 4 | 0.44 | 0 | 0.00 | 748 |
| 8 | Edmond, Leah | 9 | 44 | 4.89 | 10 | 105 | .324 | 5 | 0.56 | 0 | 2 | 0.22 | 1 | 82 | 7 | .440 | 36 | 4.00 | 4 | 0.44 | 0 | 0.00 | 709 |
| 9 | Cruz, Aury | 9 | 16 | 1.78 | 5 | 53 | .208 | 1 | 0.11 | 0 | 3 | 0.33 | 1 | 47 | 0 | .620 | 29 | 3.22 | 1 | 0.11 | 0 | 0.00 | 634 |
| 10 | Pressley, Yossiana | 9 | 22 | 2.44 | 6 | 54 | .296 | 0 | 0.00 | 1 | 3 | 0.33 | 3 | 0 | 0 | .000 | 28 | 3.11 | 1 | 0.11 | 0 | 0.00 | 611 |
| 11 | Hilley, Sydney | 9 | 5 | 0.56 | 2 | 15 | .200 | 110 | 12.22 | 2 | 3 | 0.33 | 1 | 1 | 0 | .000 | 13 | 1.44 | 1 | 0.11 | 0 | 0.00 | 586 |
| 12 | Willis, Emma | 9 | 11 | 1.22 | 3 | 23 | .348 | 2 | 0.22 | 0 | 1 | 0.11 | 4 | 0 | 0 | .000 | 2 | 0.22 | 2 | 0.22 | 6 | 0.67 | 580 |
| 13 | McCage, Molly | 9 | 27 | 3.00 | 4 | 52 | .442 | 2 | 0.22 | 0 | 1 | 0.11 | 2 | 0 | 0 | .000 | 10 | 1.11 | 6 | 0.67 | 3 | 0.33 | 574 |
| 14 | Dixon, Tori | 9 | 15 | 1.67 | 1 | 32 | .438 | 1 | 0.11 | 0 | 0 | 0.00 | 1 | 4 | 0 | .500 | 10 | 1.11 | 5 | 0.56 | 2 | 0.22 | 539 |
| 15 | Santos, Ray | 3 | 0 | 0.00 | 0 | 0 | .000 | 0 | 0.00 | 0 | 0 | 0.00 | 0 | 0 | 0 | .000 | 1 | 0.33 | 0 | 0.00 | 0 | 0.00 | 505 |
| 16 | Stalzer, Lindsay | 1 | 0 | 0.00 | 0 | 0 | .000 | 0 | 0.00 | 0 | 0 | 0.00 | 0 | 0 | 0 | .000 | 0 | 0.00 | 0 | 0.00 | 0 | 0.00 | 500 |
| 16 | Vander Weide, Lindsey | 2 | 0 | 0.00 | 0 | 1 | .000 | 0 | 0.00 | 0 | 0 | 0.00 | 0 | 0 | 0 | .000 | 0 | 0.00 | 0 | 0.00 | 0 | 0.00 | 500 |
| 16 | Watson, Karis | 0 | 0 | 0.00 | 0 | 0 | .000 | 0 | 0.00 | 0 | 0 | 0.00 | 0 | 0 | 0 | .000 | 0 | 0.00 | 0 | 0.00 | 0 | 0.00 | 500 |
| 19 | Benson, Amanda | 9 | 0 | 0.00 | 0 | 0 | .000 | 3 | 0.33 | 0 | 0 | 0.00 | 0 | 52 | 3 | .670 | 28 | 3.11 | 0 | 0.00 | 0 | 0.00 | 495 |
| 20 | Lukes, Katie | 7 | 32 | 4.57 | 8 | 88 | .273 | 1 | 0.14 | 0 | 0 | 0.00 | 3 | 65 | 2 | .480 | 15 | 2.14 | 2 | 0.29 | 0 | 0.00 | 494 |
| 21 | Childress, Alisha | 9 | 5 | 0.56 | 0 | 11 | .455 | 114 | 12.67 | 5 | 1 | 0.11 | 3 | 0 | 0 | .000 | 30 | 3.33 | 0 | 0.00 | 0 | 0.00 | 452 |
| 22 | Caffey, Kayla | 6 | 12 | 2.00 | 4 | 24 | .333 | 0 | 0.00 | 0 | 0 | 0.00 | 2 | 0 | 0 | .000 | 1 | 0.17 | 6 | 1.00 | 0 | 0.00 | 449 |
| 23 | Vélez Agosto, Nomaris | 9 | 0 | 0.00 | 0 | 0 | .000 | 6 | 0.67 | 0 | 0 | 0.00 | 0 | 42 | 3 | .600 | 37 | 4.11 | 0 | 0.00 | 0 | 0.00 | 425 |
| 24 | Fanning, Shelly | 9 | 12 | 1.33 | 3 | 32 | .281 | 2 | 0.22 | 0 | 4 | 0.44 | 3 | 0 | 0 | .000 | 12 | 1.33 | 3 | 0.33 | 5 | 0.56 | 412 |
| 25 | Hart, Danielle | 3 | 6 | 2.00 | 1 | 19 | .263 | 0 | 0.00 | 0 | 0 | 0.00 | 1 | 0 | 0 | .000 | 2 | 0.67 | 2 | 0.67 | 0 | 0.00 | 382 |
| 26 | Gonzaga, Sassá | 1 | 0 | 0.00 | 0 | 2 | .000 | 0 | 0.00 | 0 | 0 | 0.00 | 0 | 3 | 0 | .670 | 2 | 2.00 | 0 | 0.00 | 0 | 0.00 | 334 |
| 27 | McClendon, Deja | 3 | 5 | 1.67 | 3 | 20 | .100 | 0 | 0.00 | 0 | 0 | 0.00 | 0 | 9 | 0 | .560 | 11 | 3.67 | 0 | 0.00 | 0 | 0.00 | 329 |
| 28 | Edelman-Cagliari, Nicole | 0 | 0 | 0.00 | 0 | 0 | .000 | 0 | 0.00 | 0 | 0 | 0.00 | 0 | 0 | 0 | .000 | 0 | 0.00 | 0 | 0.00 | 0 | 0.00 | 320 |
| 29 | Collazo, Génesis | 8 | 12 | 1.50 | 8 | 49 | .082 | 0 | 0.00 | 0 | 0 | 0.00 | 0 | 0 | 0 | .000 | 12 | 1.50 | 3 | 0.38 | 0 | 0.00 | 316 |
| 30 | Reed, Nia | 1 | 0 | 0.00 | 1 | 2 | -.500 | 0 | 0.00 | 0 | 0 | 0.00 | 0 | 0 | 0 | .000 | 0 | 0.00 | 0 | 0.00 | 0 | 0.00 | 308 |
| 31 | Bruns Tegenrot, Taylor | 7 | 6 | 0.86 | 0 | 16 | .375 | 49 | 7.00 | 1 | 1 | 0.14 | 1 | 0 | 0 | .000 | 15 | 2.14 | 3 | 0.43 | 0 | 0.00 | 260 |
| 32 | White, Kendall | 9 | 0 | 0.00 | 0 | 0 | .000 | 5 | 0.56 | 0 | 0 | 0.00 | 0 | 55 | 4 | .600 | 39 | 4.33 | 0 | 0.00 | 0 | 0.00 | 258 |
| 33 | Parker-Robinson, Nia | 2 | 2 | 1.00 | 2 | 7 | .000 | 0 | 0.00 | 0 | 1 | 0.50 | 1 | 0 | 0 | .000 | 2 | 1.00 | 0 | 0.00 | 0 | 0.00 | 226 |
| 34 | Johnson, Willow | 9 | 29 | 3.22 | 16 | 87 | .149 | 0 | 0.00 | 1 | 2 | 0.22 | 3 | 0 | 0 | .000 | 21 | 2.33 | 4 | 0.44 | 0 | 0.00 | 221 |
| 35 | Grote, Marin | 0 | 0 | 0.00 | 0 | 0 | .000 | 0 | 0.00 | 0 | 0 | 0.00 | 0 | 0 | 0 | .000 | 0 | 0.00 | 0 | 0.00 | 0 | 0.00 | 220 |
| 36 | Brown, Kaz | 9 | 19 | 2.11 | 6 | 38 | .342 | 0 | 0.00 | 0 | 0 | 0.00 | 0 | 1 | 0 | .000 | 3 | 0.33 | 6 | 0.67 | 4 | 0.44 | 215 |
| 37 | Blossom, Gabby | 4 | 0 | 0.00 | 0 | 0 | .000 | 0 | 0.00 | 0 | 0 | 0.00 | 1 | 0 | 0 | .000 | 0 | 0.00 | 0 | 0.00 | 0 | 0.00 | 212 |
| 38 | Fairs, Erin | 8 | 21 | 2.63 | 6 | 55 | .273 | 1 | 0.13 | 0 | 0 | 0.00 | 2 | 66 | 7 | .470 | 16 | 2.00 | 2 | 0.25 | 0 | 0.00 | 203 |
| 39 | Linnehan, Alli | 9 | 19 | 2.11 | 14 | 95 | .053 | 3 | 0.33 | 0 | 1 | 0.11 | 0 | 59 | 4 | .470 | 12 | 1.33 | 5 | 0.56 | 0 | 0.00 | 167 |
| 40 | Tomkom, Nootsara | 8 | 0 | 0.00 | 0 | 2 | .000 | 33 | 4.13 | 1 | 1 | 0.13 | 1 | 0 | 0 | .000 | 16 | 2.00 | 0 | 0.00 | 0 | 0.00 | 145 |
| 41 | Schlegel, Maria | 3 | 4 | 1.33 | 1 | 22 | .136 | 1 | 0.33 | 1 | 0 | 0.00 | 2 | 20 | 0 | .650 | 13 | 4.33 | 0 | 0.00 | 0 | 0.00 | 124 |
| 42 | Bastianelli, Ali | 9 | 5 | 0.56 | 6 | 35 | -.029 | 1 | 0.11 | 0 | 0 | 0.00 | 4 | 0 | 0 | .000 | 3 | 0.33 | 6 | 0.67 | 8 | 0.89 | 80 |
| 43 | Abbott, Symone | 1 | 1 | 1.00 | 1 | 5 | .000 | 0 | 0.00 | 0 | 0 | 0.00 | 0 | 0 | 0 | .000 | 0 | 0.00 | 0 | 0.00 | 0 | 0.00 | 36 |
| 44 | Mohler, Blake | 1 | 0 | 0.00 | 1 | 1 | -1.000 | 0 | 0.00 | 0 | 0 | 0.00 | 0 | 0 | 0 | .000 | 0 | 0.00 | 0 | 0.00 | 0 | 0.00 | 28 |

2023 ATHLETES UNLIMITED VOLLEYBALL CAPTAIN WEEK-BY-WEEK RESULTS

WEEK ONE: OCTOBER 6-9

| TEAM DE LA CRUZ | | | TEAM VALENTIN-ANDERSON | | | TEAM NOOTSARA | | | TEAM EDMOND | | |
|-------------------------------------|------------------------|---------------|---|-----------------|---------------|----------------------------------|------------------------|----------|--------------------------------|------------------------|----------|
| Captain: Bethania De La Cruz | | | Captain: Natalia Valentin-Anderson | | | Captain: Nootsara Tomkom | | | Captain: Leah Edmond | | |
| Facilitator: Kayla Banwarth | | | Facilitator: Brandon Directo | | | Facilitator: Stephen Gbur | | | Facilitator: Dave Rubio | | |
| Date | Opponent | Score | Date | Opponent | Score | Date | Opponent | Score | Date | Opponent | Score |
| 10/6 | Team Edmond | L, 77-73 | 10/6 | Team Nootsara | L, 75-63 | 10/6 | Team Valentin-Anderson | W, 75-63 | 10/6 | Team De La Cruz | W, 77-73 |
| 10/8 | Team Nootsara | L, 70-69 | 10/8 | Team Edmond | L, 75-58 | 10/8 | Team De La Cruz | W, 70-69 | 10/8 | Team Valentin-Anderson | W, 75-58 |
| 10/9 | Team Valentin-Anderson | W, 74-72 (GS) | 10/9 | Team De La Cruz | L, 74-72 (GS) | 10/9 | Team Edmond | L, 75-44 | 10/9 | Team Nootsara | W, 75-44 |

WEEK TWO: OCTOBER 13-16

| TEAM EDMOND | | | TEAM LINNEHAN | | | TEAM HENTZ | | | TEAM HILLEY | | |
|-------------------------------------|---------------|----------|----------------------------------|-------------|----------|--------------------------------|---------------|----------|------------------------------------|---------------|----------|
| Captain: Leah Edmond | | | Captain: Alli Linnehan | | | Captain: Morgan Hentz | | | Captain: Sydney Hilley | | |
| Facilitator: Brandon Directo | | | Facilitator: Stephen Gbur | | | Facilitator: Dave Rubio | | | Facilitator: Kayla Banwarth | | |
| Date | Opponent | Score | Date | Opponent | Score | Date | Opponent | Score | Date | Opponent | Score |
| 10/13 | Team Hilley | L, 74-62 | 10/13 | Team Hentz | L, 76-51 | 10/13 | Team Linnehan | W, 76-51 | 10/13 | Team Edmond | W, 74-62 |
| 10/15 | Team Hentz | L, 73-64 | 10/15 | Team Hilley | L, 75-53 | 10/15 | Team Edmond | W, 73-64 | 10/15 | Team Linnehan | W, 75-53 |
| 10/16 | Team Linnehan | W, 69-63 | 10/16 | Team Edmond | L, 69-63 | 10/16 | Team Hilley | W, 78-55 | 10/16 | Team Hentz | L, 78-55 |

WEEK THREE: OCTOBER 20-23

| TEAM EDMOND | | | TEAM HENTZ | | | TEAM HILLEY | | | TEAM ROSENTHAL | | |
|----------------------------------|----------------|-------|--------------------------------|----------------|-------|------------------------------------|----------------|-------|-------------------------------------|-------------|-------|
| Captain: Leah Edmond | | | Captain: Morgan Hentz | | | Captain: Sydney Hilley | | | Captain: Jenna Rosenthal | | |
| Facilitator: Stephen Gbur | | | Facilitator: Dave Rubio | | | Facilitator: Kayla Banwarth | | | Facilitator: Brandon Directo | | |
| Date | Opponent | Score | Date | Opponent | Score | Date | Opponent | Score | Date | Opponent | Score |
| 10/20 | Team Rosenthal | | 10/20 | Team Hilley | | 10/20 | Team Hentz | | 10/20 | Team Edmond | |
| 10/22 | Team Hilley | | 10/22 | Team Rosenthal | | 10/22 | Team Edmond | | 10/22 | Team Hentz | |
| 10/23 | Team Hentz | | 10/23 | Team Edmond | | 10/23 | Team Rosenthal | | 10/23 | Team Hilley | |

WEEK FOUR: OCTOBER 27-30

| TEAM TBA | | | TEAM TBA | | | TEAM TBA | | | TEAM TBA | | |
|--------------------------------|----------|-------|------------------------------------|----------|-------|-------------------------------------|----------|-------|----------------------------------|----------|-------|
| Captain: TBA | | | Captain: TBA | | | Captain: TBA | | | Captain: TBA | | |
| Facilitator: Dave Rubio | | | Facilitator: Kayla Banwarth | | | Facilitator: Brandon Directo | | | Facilitator: Stephen Gbur | | |
| Date | Opponent | Score | Date | Opponent | Score | Date | Opponent | Score | Date | Opponent | Score |
| 10/27 | | | 10/27 | | | 10/27 | | | 10/27 | | |
| 10/29 | | | 10/29 | | | 10/29 | | | 10/29 | | |
| 10/30 | | | 10/30 | | | 10/30 | | | 10/30 | | |

WEEK FIVE: NOVEMBER 3-6

| TEAM TBA | | | TEAM TBA | | | TEAM TBA | | | TEAM TBA | | |
|------------------------------------|----------|-------|-------------------------------------|----------|-------|----------------------------------|----------|-------|--------------------------------|----------|-------|
| Captain: TBA | | | Captain: TBA | | | Captain: TBA | | | Captain: TBA | | |
| Facilitator: Kayla Banwarth | | | Facilitator: Brandon Directo | | | Facilitator: Stephen Gbur | | | Facilitator: Dave Rubio | | |
| Date | Opponent | Score | Date | Opponent | Score | Date | Opponent | Score | Date | Opponent | Score |
| 11/3 | | | 11/3 | | | 11/3 | | | 11/3 | | |
| 11/5 | | | 11/5 | | | 11/5 | | | 11/5 | | |
| 11/6 | | | 11/6 | | | 11/6 | | | 11/6 | | |

2023 ATHLETES UNLIMITED VOLLEYBALL DRAFT RESULTS (BY TEAM ORDER)

WEEK ONE: OCTOBER 6-9

| ROUND | TEAM DE LA CRUZ (GOLD) | TEAM VALENTIN-ANDERSON (ORANGE) | TEAM NOOTSARA (BLUE) | TEAM EDMOND (PURPLE) |
|---------|---------------------------|---------------------------------|-----------------------------|---------------------------|
| Captain | Bethania De La Cruz (OH) | Natalia Valentin-Anderson (S) | Nootsara Tomkom (S) | Leah Edmond (OH) |
| 1 | Alisha Childress (S) | Brooke Nuneviller (OH) | Yossiana Pressley (OH) | Alli Linnehan (OH) |
| 2 | Willow Johnson (OPP) | Saskia Hippe (OPP) | Molly McCage (MB) | Danielle Hart (MB) |
| 3 | Anota Adekunle (MB) | Shelly Fanning (MB) | Claire Chaussee (OH) | Morgan Hentz (L) |
| 4 | Nomaris Vélez Agosto (L) | Katie Lukes (OH) | Ali Bastianelli (MB) | Sydney Hilley (S) |
| 5 | Lindsey Vander Weide (OH) | Tori Dixon (MB) | Kendall White (L) | Jenna Rosenthal (MB) |
| 6 | Karis Watson (MB) | Maria Schlegel (OH) | Nia Reed (OPP) | Génesis Collazo (OPP) |
| 7 | Gabby Blossom (S) | Kaz Brown (MB) | Aury Cruz (OH) | Taylor Bruns Tegenrot (S) |
| 8 | Erin Fairs (OH) | Nia Parker-Robinson (OH) | Nicole Edelman-Cagliari (S) | Deja McClendon (OH) |
| 9 | Kayla Caffey (MB) | Amanda Benson (L) | Sassá Gonzaga (OH) | Emma Willis (MB) |
| 10 | Symone Abbott (OPP) | Ray Santos (S) | Marin Grote (MB) | Lindsay Stalzer (OH) |

WEEK TWO: OCTOBER 13-16

| ROUND | TEAM EDMOND (GOLD) | TEAM LINNEHAN (ORANGE) | TEAM HENTZ (BLUE) | TEAM HILLEY (PURPLE) |
|---------|--------------------------|---------------------------|-------------------------------|-----------------------------|
| Captain | Leah Edmond (OH) | Alli Linnehan (OH) | Morgan Hentz (L) | Sydney Hilley (S) |
| 1 | Alisha Childress (S) | Willow Johnson (OPP) | Bethania De La Cruz (OH) | Claire Chaussee (OH) |
| 2 | Molly McCage (MB) | Nootsara Tomkom (S) | Brooke Nuneviller (OH) | Yossiana Pressley (OH) |
| 3 | Génesis Collazo (OPP) | Ali Bastianelli (MB) | Jenna Rosenthal (MB) | Danielle Hart (MB) |
| 4 | Nomaris Vélez Agosto (L) | Kendall White (L) | Natalia Valentin-Anderson (S) | Aury Cruz (OH) |
| 5 | Shelly Fanning (MB) | Kaz Brown (MB) | Saskia Hippe (OPP) | Tori Dixon (MB) |
| 6 | Katie Lukes (OH) | Maria Schlegel (OH) | Emma Willis (MB) | Nia Reed (OPP) |
| 7 | Deja McClendon (OH) | Taylor Bruns Tegenrot (S) | Karis Watson (MB) | Sassá Gonzaga (OH) |
| 8 | Gabby Blossom (S) | Erin Fairs (OH) | Lindsey Vander Weide (OH) | Nicole Edelman-Cagliari (S) |
| 9 | Nia Parker-Robinson (OH) | Symone Abbott (OPP) | Lindsay Stalzer (OH) | Kayla Caffey (MB) |
| 10 | Marin Grote (MB) | - | Ray Santos (S) | Amanda Benson (L) |

Note: Blake Mohler was added to the roster on October 11 and assigned to Team Linnehan

WEEK THREE: OCTOBER 20-23

| ROUND | TEAM EDMOND (GOLD) | TEAM HENTZ (ORANGE) | TEAM HILLEY (BLUE) | TEAM ROSENTHAL (PURPLE) |
|---------|-------------------------------|---------------------------|------------------------|-----------------------------|
| Captain | Leah Edmond (OH) | Morgan Hentz (L) | Sydney Hilley (S) | Jenna Rosenthal (MB) |
| 1 | Natalia Valentin-Anderson (S) | Alli Linnehan (OH) | Brooke Nuneviller (OH) | Claire Chaussee (OH) |
| 2 | Saskia Hippe (OPP) | Molly McCage (MB) | Willow Johnson (OPP) | Alisha Childress (S) |
| 3 | Kaz Brown (MB) | Ali Bastianelli (MB) | Danielle Hart (MB) | Aury Cruz (OH) |
| 4 | Yossiana Pressley (OH) | Lindsey Vander Weide (OH) | Katie Lukes (OH) | Nomaris Vélez Agosto (L) |
| 5 | Tori Dixon (MB) | Nootsara Tomkom (S) | Emma Willis (MB) | Nia Reed (OPP) |
| 6 | Deja McClendon (OH) | Génesis Collazo (OPP) | Sassá Gonzaga (OH) | Lindsay Stalzer (OH) |
| 7 | Amanda Benson (L) | Taylor Bruns Tegenrot (S) | Karis Watson (MB) | Shelly Fanning (MB) |
| 8 | Erin Fairs (OH) | Symone Abbott (OPP) | Gabby Blossom (S) | Nia Parker-Robinson (OH) |
| 9 | Ray Santos (S) | Blake Mohler (MB) | Maria Schlegel (OH) | Kayla Caffey (MB) |
| 10 | Marin Grote (MB) | - | Kendall White (L) | Nicole Edelman-Cagliari (S) |

Note: Bethania De La Cruz was not available for selection due to national team commitments at Pan American Games.

WEEK FOUR: OCTOBER 27-30

| ROUND | TEAM TBA (GOLD) | TEAM TBA (ORANGE) | TEAM TBA (BLUE) | TEAM TBA (PURPLE) |
|---------|-----------------|-------------------|-----------------|-------------------|
| Captain | | | | |
| 1 | | | | |
| 2 | | | | |
| 3 | | | | |
| 4 | | | | |
| 5 | | | | |
| 6 | | | | |
| 7 | | | | |
| 8 | | | | |
| 9 | | | | |
| 10 | | | | |

WEEK FIVE: NOVEMBER 3-6

| ROUND | TEAM TBA (GOLD) | TEAM TBA (ORANGE) | TEAM TBA (BLUE) | TEAM TBA (PURPLE) |
|---------|-----------------|-------------------|-----------------|-------------------|
| Captain | | | | |
| 1 | | | | |
| 2 | | | | |
| 3 | | | | |
| 4 | | | | |
| 5 | | | | |
| 6 | | | | |
| 7 | | | | |
| 8 | | | | |
| 9 | | | | |
| 10 | | | | |

2023 ATHLETES UNLIMITED VOLLEYBALL DRAFT RESULTS (BY OVERALL ORDER)

| DRAFT PICK | Week 1 | Week 2 | Week 3 | Week 4 | Week 5 |
|------------|-------------------------------|-------------------------------|-------------------------------|--------|--------|
| Captain | Bethania De La Cruz (OH) | Leah Edmond (OH) | Leah Edmond (OH) | | |
| Captain | Natalia Valentin-Anderson (S) | Alli Linnehan (OH) | Morgan Hentz (L) | | |
| Captain | Nootsara Tomkom (S) | Morgan Hentz (L) | Sydney Hilley (S) | | |
| Captain | Leah Edmond (OH) | Sydney Hilley (S) | Jenna Rosenthal (MB) | | |
| 1 | Alli Linnehan (OH) | Claire Chaussee (OH) | Claire Chaussee (OH) | | |
| 2 | Yossiana Pressley (OH) | Bethania De La Cruz (OH) | Brooke Nuneviller (OH) | | |
| 3 | Brooke Nuneviller (OH) | Willow Johnson (OPP) | Alli Linnehan (OH) | | |
| 4 | Alisha Childress (S) | Alisha Childress (S) | Natalia Valentin-Anderson (S) | | |
| 5 | Willow Johnson (OPP) | Molly McCage (MB) | Saskia Hippe (OPP) | | |
| 6 | Saskia Hippe (OPP) | Nootsara Tomkom (S) | Molly McCage (MB) | | |
| 7 | Molly McCage (MB) | Brooke Nuneviller (OH) | Willow Johnson (OPP) | | |
| 8 | Danielle Hart (MB) | Yossiana Pressley (OH) | Alisha Childress (S) | | |
| 9 | Morgan Hentz (L) | Danielle Hart (MB) | Aury Cruz (OH) | | |
| 10 | Claire Chaussee (OH) | Jenna Rosenthal (MB) | Danielle Hart (MB) | | |
| 11 | Shelly Fanning (MB) | Ali Bastianelli (MB) | Ali Bastianelli (MB) | | |
| 12 | Anota Adekunle (MB) | Génesis Collazo (OPP) | Kaz Brown (MB) | | |
| 13 | Nomaris Vélez Agosto (L) | Nomaris Vélez Agosto (L) | Yossiana Pressley (OH) | | |
| 14 | Katie Lukes (OH) | Kendall White (L) | Lindsey Vander Weide (OH) | | |
| 15 | Ali Bastianelli (MB) | Natalia Valentin-Anderson (S) | Katie Lukes (OH) | | |
| 16 | Sydney Hilley (S) | Aury Cruz (OH) | Nomaris Vélez Agosto (L) | | |
| 17 | Jenna Rosenthal (MB) | Tori Dixon (MB) | Nia Reed (OPP) | | |
| 18 | Kendall White (L) | Saskia Hippe (OPP) | Emma Willis (MB) | | |
| 19 | Tori Dixon (MB) | Kaz Brown (MB) | Nootsara Tomkom (S) | | |
| 20 | Lindsey Vander Weide (OH) | Shelly Fanning (MB) | Tori Dixon (MB) | | |
| 21 | Karis Watson (MB) | Katie Lukes (OH) | Deja McClendon (OH) | | |
| 22 | Maria Schlegel (OH) | Maria Schlegel (OH) | Génesis Collazo (OPP) | | |
| 23 | Nia Reed (OPP) | Emma Willis (MB) | Sassá Gonzaga (OH) | | |
| 24 | Génesis Collazo (OPP) | Nia Reed (OPP) | Lindsay Stalzer (OH) | | |
| 25 | Taylor Bruns Tegenrot (S) | Sassá Gonzaga (OH) | Shelly Fanning (MB) | | |
| 26 | Aury Cruz (OH) | Karis Watson (MB) | Karis Watson (MB) | | |
| 27 | Kaz Brown (MB) | Taylor Bruns Tegenrot (S) | Taylor Bruns Tegenrot (S) | | |
| 28 | Gabby Blossom (S) | Deja McClendon (OH) | Amanda Benson (L) | | |
| 29 | Erin Fairs (OH) | Gabby Blossom (S) | Erin Fairs (OH) | | |
| 30 | Nia Parker-Robinson (OH) | Erin Fairs (OH) | Symone Abbott (OPP) | | |
| 31 | Nicole Edelman-Cagliari (S) | Lindsey Vander Weide (OH) | Gabby Blossom (S) | | |
| 32 | Deja McClendon (OH) | Nicole Edelman-Cagliari (S) | Nia Parker-Robinson (OH) | | |
| 33 | Emma Willis (MB) | Kayla Caffey (MB) | Kayla Caffey (MB) | | |
| 34 | Sassá Gonzaga (OH) | Lindsay Stalzer (OH) | Maria Schlegel (OH) | | |
| 35 | Amanda Benson (L) | Symone Abbott (OPP) | Blake Mohler (MB) | | |
| 36 | Kayla Caffey (MB) | Nia Parker-Robinson (OH) | Ray Santos (S) | | |
| 37 | Symone Abbott (OPP) | Marin Grote (MB) | Marin Grote (MB) | | |
| 38 | Ray Santos (S) | Ray Santos (S) | Kendall White (L) | | |
| 39 | Marin Grote (MB) | Amanda Benson (L) | Nicole Edelman-Cagliari (S) | | |
| 40 | Lindsay Stalzer (OH) | - | - | | |

Note: Blake Mohler was added to the roster on October 11 and assigned to Team Linnehan for Week Two

2023 ATHLETES UNLIMITED VOLLEYBALL HEADSHOT ROSTER (NUMERICAL - OCTOBER 15)



00 Amanda
BENSON



1 Kendall
WHITE



2 Brooke
NUNEVILLER



3 Danielle
HART



4 Ray
SANTOS



5 Molly
McCAGE



6 Alisha
CHILDRESS



7 Erin
FAIRST



8 Sydney
HILLEY



9 Sassa
GONZAGA



10 Kaz
BROWN



11 Claire
CHAUSSEE



12 Leah
EDMOND



13 Nootsara
TOMKOM



14 Nicole
EDELMAN-CAGLIARI



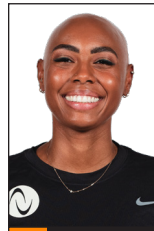
15 Katie
LUKES



16 Jenna
ROSENTHAL



17 Taylor
BRUNS TEGENROT



18 Deja
McCLELLAND



20 Blake
MOHLER



21 Lindsey
VANDER WEIDE



22 Yossiana
PRESSLEY



23 Tori
DIXON



24 Aury
CRUZ



26 Maria
SCHLEGEL



27 Natalia
VALENTIN-ANDERSON



28 Kayla
CAFFEY



29 Lindsay
STALZER



31 Gabby
BLOSSOM



32 Nia
PARKER-ROBINSON



33 Nia
REED



37 Alli
LINNEHAN



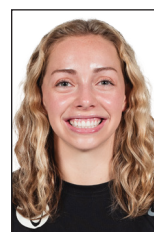
40 Nomaris
VÉLEZ AGOSTO



42 Symone
ABBOTT



44 Willow
JOHNSON



46 Morgan
HENTZ



48 Karis
WATSON



54 Emma
WILLIS



55 Ali
BASTIANELLI



77 Genesis
COLLAZO



81 Bethania
DE LA CRUZ



88 Marin
GROTE



91 Saskia
HIPPE



97 Shelly
FANNING



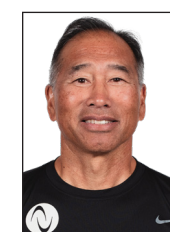
Kayla
BANWARTH



Brandon
DIRECTO



Stephen
GBUR



Dave
RUBIO